



Trinity College Dublin

Coláiste na Tríonóide, Baile Átha Cliath

The University of Dublin

TRINITY HEALTH AND EDUCATION INTERNATIONAL RESEARCH CONFERENCE 2021 (THECONF2021):

'TRANSFORMING HEALTHCARE IN A CHANGING WORLD: NEW WAYS OF THINKING AND WORKING'

**TRINITY CENTRE FOR AGEING AND INTELLECTUAL DISABILITY
SCHOOL OF NURSING AND MIDWIFERY**

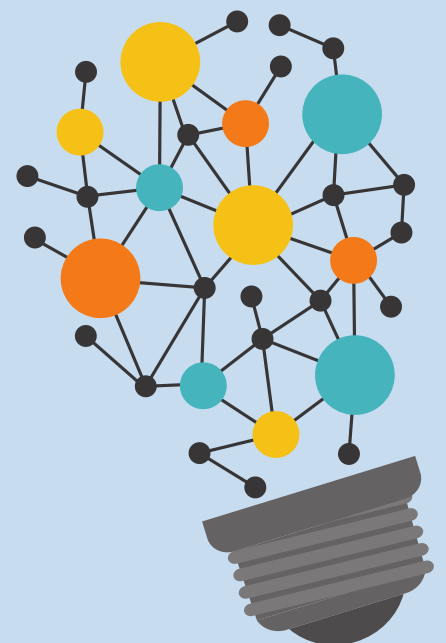
**HEALTHY AGEING AND INTELLECTUAL DISABILITY
PROGRAMME**

Wednesday 10th - Thursday 11th March

REGISTRATION - €25 (INCL.

Access to the on-demand
content for 60 days.

<https://theconf2021.exordo.com/>



WEDNESDAY 10TH MARCH

10:15 - 10:35 MARIANNE FALLON

Brother's of Charity & TCD School of Nursing and Midwifery

Towards a biopsychosocial model of the risk and protective factors of cognitive decline in people ageing with intellectual disability

10:35 - 10:55 GERALDINE BOLAND

UCD Centre for Disability Studies

Connecting locally: a systematic scoping review examining the facilitators of and barriers to social inclusion of adults with intellectual disability

10:55 - 11:15 DR ANDREW WORMALD

University of Limerick

A life without loneliness: what results from the IDS-TILDA tell us is the best way to avoid loneliness in the lives of older people with an intellectual disability

11:30 - 11:50 PROF MARY MCCARRON

TCD School of Nursing and Midwifery

The impact of the COVID-19 crisis for older people with an intellectual disability in Ireland

11:50 - 12:10 - FIDELMA FLANNERY

TCD School of Nursing and Midwifery

The impact of COVID-19 on the mental health and well-being of adults with an intellectual disability

11:50 - 12:10 - DR DARREN MCCAUSLAND

TCD School of Nursing and Midwifery

The impact of the COVID-19 crisis on the social inclusion and well-being of older people with an intellectual disability in Ireland

14:15 - 14:35 RITA MOLLOY

St. Michael's House & TCD School of Nursing and Midwifery

A descriptive quantitative exploration of the foot health status of older adults with intellectual disability in Ireland over 10 years

10:35 - 10:55 NIAMH MAHER

St. James's Hospital

The impact of vertebral fractures on health-related quality of life in osteoporotic patients attending a bone health service

14:55 - 15:15 LOUISE LYNCH

TCD School of Nursing and Midwifery

Sedentary behaviour levels in adults with an intellectual disability: a systematic review

15:30 - 15:50 DR EIMEAR MCGLINCHEY

TCD School of Nursing and Midwifery

Patterns of onset of dementia and epilepsy in adults with Down syndrome: findings from IDS-TILDA

15:50 - 16:10 - ROSEMARY MONAGHAN

TCD School of Nursing and Midwifery

The relationship between antiepileptic drug load and behaviours that challenge in older adults with intellectual disability and epilepsy

16:10 - 16:30 - ROSEMARY MONAGHAN

TCD School of Nursing and Midwifery

Anti-epileptic drugs, seizures and effect of co-administration of potential seizure threshold lowering psychotropic drugs in adults with epilepsy & intellectual disability

THURSDAY 11TH MARCH

10:15 - 10:35 HOLLY DENNEHY

TCD School of Nursing and Midwifery

Get Wise about your health; supporting people with intellectual disability to be health savvy

10:35 - 10:55 SONIA MCDERMOTT

TCD School of Nursing and Midwifery

Training older adults with intellectual disabilities (ID) as Physical Activity Leaders 2020 (PPALS2)

10:55 - 11:15 DR FINTAN SHEERIN

TCD School of Nursing and Midwifery

Accessibility in the lives of people with intellectual disabilities

11:30 - 11:50 - DR ESTHER MURPHY

TCD School of in Nursing and Midwifery

Inclusive approaches to intellectual disability research – creating employment opportunities for co-researchers with intellectual disability

11:50 - 12:10 - ANNE DOYLE

Health Research Board

People with Intellectual disability in Ireland are still dying young

11:50 - 12:10 - DR TERESA DOWLING

Waterford Institute of Technology

Implementing advance directives – an international review of important considerations for nurses

14:15 - 14:35 BRENDAN DEE

TCD School of Nursing and Midwifery

Exploring a social conceptualisation of frailty among older adults with an intellectual disability

10:35 - 10:55 LAUREN SWAN

TCD Department of Clinical Medicine

Socioeconomic inequality and risk of sarcopenia in community-dwelling older adults

14:55 - 15:15 CHLOE WALSH

NUI Galway

Development and validation of a novel physician-report tool to assess barriers to providing physical healthcare to people on the autism spectrum

