



THE UNIVERSITY OF
**WESTERN
AUSTRALIA**

2020–2021
STUDY ABROAD
AND EXCHANGE
COURSE GUIDE
GLOBAL LEARNING OFFICE



Welcome to our community



“The University of Western Australia believes in preparing our graduates to be the change-makers in society. Our high-quality courses and unique course structure will equip you with the multidisciplinary skills needed to succeed and transform the world in which we live, improving the lives of others and the communities we serve.

I welcome you to our community and invite you on an exciting journey to turn your ambitions into reality.”

– Professor Dawn Freshwater, Vice-Chancellor

ACKNOWLEDGEMENT

The University of Western Australia acknowledges that it is situated on Noongar land and that Noongar people remain the spiritual and cultural custodians of their land and continue to practise their values, languages, beliefs and knowledge.



Contents

Our global reputation	4
Life in Perth	6
UWA's location.....	8
A unique campus	10
UWA student life.....	12
Connecting you to industry.....	14
What can I study?	16
Selecting your classes	17
Academic Requirements.....	18
Help with English language skills	19
Accommodation at UWA.....	20
Money matters.....	22
How to apply.....	24
Campus map.....	25
Important dates 2020.....	26
Useful links	27

Our global reputation

Study at an internationally recognised university

Ranked in the world's Top

100

1st in Western Australia
(ARWU 2018)



Well-established industry partnerships
67% of all majors at UWA incorporate a work-integrated learning component
(Universities Australia, 2018)



Globally recognised course structure

aligned with leading European, Asian and North American universities



GROUP OF EIGHT AUSTRALIA

MEMBER

UWA is a member of the **Group of Eight** – a coalition of the best research-intensive universities in Australia

Ranked in the world's **TOP 50**

- Agriculture and Forestry
- Anatomy and Physiology
- Civil and Structural Engineering
- Earth and Marine Science
- Mineral and Mining Engineering
- Psychology
- Sports-related subjects (*QS 2019*)
- Biological Science
- Clinical Medicine
- Ecology
- Public Health
- Environmental Science and Engineering
- Marine/Ocean Engineering
- Mining and Mineral Engineering
- Agricultural Sciences
- Oceanography (*ARWU 2018*)

Life in Perth

Perth is Australia's fourth-largest city and capital of the thriving state of Western Australia. Consistently voted one of the most liveable cities in the world by the Economist Intelligence Unit, the city offers an inspiring study environment with sunny weather, a relaxed outdoor lifestyle and beautiful natural scenery.

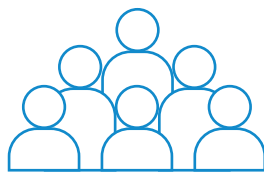
Perth holds international appeal for its safety, strong cultural diversity and urban sophistication. The city's cultural scene offers an array of activities, with plenty of festivals, eateries, modern bars and weekend markets adding flavour to the city and its suburbs.

study.uwa.edu.au/perth



Cultural diversity

More than **200** different nationalities live, work and study in WA, speaking more than **170** languages



Perth's population

2.6 million

Complete
religious freedom

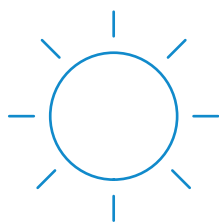


Language

English

Democratic
government
(Westminster system)

FREE WiFi 
in Perth city



Weather

Summer 18–32°C
Autumn 13–26°C
Winter 9–18°C
Spring 11–23°C



Direct flights to

Tokyo 9 hours
Singapore 5.5 hours
Kuala Lumpur 6 hours
Guangzhou 8 hours
Hong Kong 8 hours
London 17 hours



One of Australia's most affordable capital cities

(Worldwide Cost of Living Survey 2018, Economist Intelligence Unit)

UWA's location



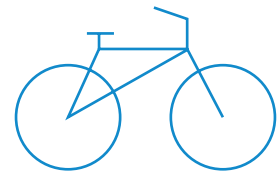
Transport discounts

International students receive a government-sponsored 40 per cent discount on all public transport. Free buses operate around Perth city.



5km

to Perth city
(11 minutes by car,
20 minutes by bus)



4.2km

to Elizabeth Quay
(7 minutes by car,
19 minutes by bicycle)



Kings Park

Perth city

UWA campus



6.3km

to Cottesloe Beach
(11 minutes by car,
23 minutes by bus)



1.2km

to Kings Park and
Botanic Garden
(16 minutes walking)



22km

to Perth International
Airport (30 minutes by car)



A unique campus

Located by the Swan River and only minutes from Perth's city centre, UWA is often described as one of Australia's most picturesque campuses.



→ Enjoy the scenery of Matilda Bay and take part in kayaking, rowing or sailing on the Swan River.



- ← Socialise with friends at one of the many cafés.
- Enjoy an outdoor cinema experience at UWA's Somerville Auditorium.



- ← Relax in heritage-listed gardens and open courtyards.

2020

- ↓ Try different cuisines at Guild Village, located on campus.



UWA Claremont

Just a few minutes from the main Perth campus is the University's historic Claremont campus, which is home to the UWA Centre for English Language Teaching (UWA CELT) and Taylors College, which provides foundation courses for international students.



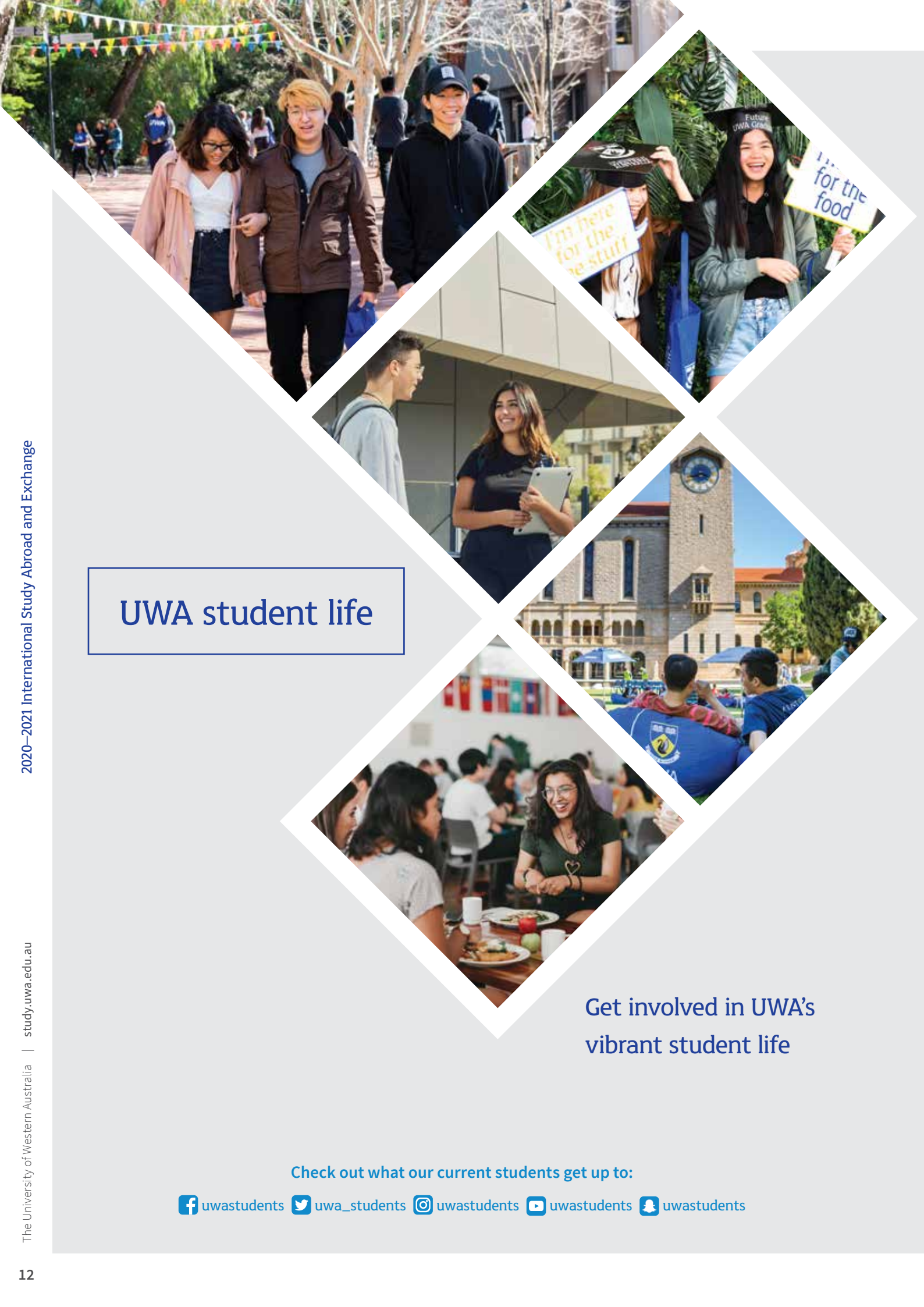
- ↪ Experience the atmosphere at Guild Village, home to shops, food outlets, a medical centre, bank and other student amenities.
- ← Discover the Cultural Precinct, UWA's cultural hub that supports music, theatre, dance, literature and art exhibition programs.



UWA Albany

UWA has a high-tech education centre in the southwest town of Western Australia – a five-hour drive from Perth. Here you can experience all that regional WA has to offer while studying at university.

albany.uwa.edu.au



UWA student life

Get involved in UWA's vibrant student life

Check out what our current students get up to:

- [uwastudents](#)
- [uwa_students](#)
- [uwastudents](#)
- [uwastudents](#)
- [uwastudents](#)

UWA Student Guild

Student life at UWA is dynamic, with social activities on campus organised by the representative student organisation, the UWA Student Guild.

With a reputation for being one of the most active in Australia, the Guild runs more than 150 clubs and societies that cover a range of interest areas, from anime to zoology. These groups have about 15,000 members between them and organise hundreds of events each year, spanning balls, festivals, workshops, networking opportunities, competitions and more.

The Guild also provides student representation, with staff on hand to give extra support to you on academic, financial or welfare matters affecting your study. The free Guild membership entitles students to great discounts on campus and at restaurants, shops, activities and services around Perth.

uwastudentguild.com

The International Students' Service (ISS) is part of the Student Guild and looks after the welfare of international students studying at the University. ISS also puts on social and educational activities such as a trip to Rottnest and Spring Feast.

[facebook.com/](https://www.facebook.com/UWAInternationalStudentsService)

[UWAInternationalStudentsService](https://www.facebook.com/UWAInternationalStudentsService)

The Guild Village

The Guild Village is a hive of activity, and houses shops, food outlets, a medical centre, dentist, bank and other useful student amenities such as the Guild second-hand bookshop (where you can buy SmartRider reduced-cost travel passes). A regular marketplace that's held in the Guild Village is the place to buy inexpensive, locally made clothes, jewellery and more.

Leisure and recreation

The Cultural Precinct

The Cultural Precinct is UWA's cultural hub, supporting the music, theatre, dance, literature and exhibition programs on campus.

- Be inspired by art at the Lawrence Wilson Art Gallery
- Discover sculptures around campus
- Be moved by a free lunchtime concert at the Conservatorium of Music
- Read a new book from UWA Publishing
- Learn more about Indigenous culture through the Berndt Museum Collection
- Book performances at the Octagon and Dolphin theatres

The Cultural Precinct also supports broader arts and cultural events that take place throughout the year, including collaborations with the Perth Festival.

culturalprecinct.uwa.edu.au

UWA Sport

At The University of Western Australia sport plays a central role in the lives of students and promotes a healthy campus culture. Whether you're training for a gold medal or looking for a spin, dance or Pilates class, UWA Sport offers programs and membership options to suit everyone.


Becoming a Fitness Centre member gives you access to more than 50 group fitness classes a week, state-of-the-art equipment, multiple training zones, qualified instructors and free tickets to our popular training, health, fitness and wellbeing Masterclasses.

Up for some healthy competition? You can join our interfaculty, intercollege or social competitions, or represent one of our 27 sport clubs, catering for all skill levels from amateur to elite.


If you'd like to try something new, sign up for our Recreate Short Courses. With everything from salsa to surfing, trips to Rottnest and self-defence classes, there really is something for everyone.

We also support our elite athletes in their academic and sporting pursuits through the Student Athlete Development Program.


sport.uwa.edu.au




Learn a new **sport** or join a **team** with UWA Sport



Join one of **150+** clubs and societies



Live in one of **5** colleges close to campus



Experience **art and culture**
UWA is the founder of the Perth Festival

Connecting you to industry

At UWA you'll not only study towards a degree, you'll also have the opportunity to gain valuable experience for your future career.

We have strong partnerships with a range of organisations to provide you with practical, real-world experiences, in addition to valuable professional networking opportunities. This hands-on learning approach is highly valued by employers and ensures you're career-ready. These partnerships enable you to take part in a number of activities, including:

Internships for credit

Placements or internships may be arranged as part of your study abroad experience. They're usually one day a week in a supervised workplace run between 80 to 100 hours in total and can be anything from getting a feel for a legitimate working environment to participating in live projects. These practicums are available through Arts, Commerce and Science degrees. For more information please contact the Global Learning Office at studyabroad@uwa.edu.au.

A community of entrepreneurs

Bloom provides young entrepreneurs mentorship, skill-focused events and an open working space where they can flourish. UWA is proud to be a Gold Member of Bloom. bloom.org.au

Service learning units

These units are another way to gain experience and they involve unpaid work with not-for-profit, community or government services. Some can earn you academic credit as well as the chance to put your degree skills to use.

The McCusker Centre for Citizenship provides this kind of learning. Established in 2015, it offers all UWA students structured, quality internships with not-for-profit, community and government organisations locally, regionally and globally. Students will be matched based on their application and the internship opportunities available, and you can gain academic credit.

mccuskercentre.uwa.edu.au

Guild Volunteering

Guild Volunteering gets you off campus and into the real world to start making a difference. Broaden your mind, meet new people and develop skills in an area you're interested in. You may also find that some volunteering is eligible for your supplementary academic transcript.

volunteering.guild.uwa.edu.au

“As part of my degree I got the opportunity to do an internship with UWA's Wave Energy Centre. That experience was great since I was exposed to real-world problems outside of the classroom! I also got several opportunities to attend conferences and meet professionals in the field, which will be invaluable for my future.”

Varsha Gunness
Master of Professional Engineering
(Environmental Engineering)



How can I study at UWA

Exchange

If your university or college has a formal student exchange agreement with UWA, you can apply to study with us as an exchange student. This means you don't pay tuition fees at UWA, but continue to pay the tuition fees of your home university or college. There are other costs that you will need to consider, such as an Australian Student Visa, Overseas Student Health Cover (medical insurance), accommodation, books, transport and living expenses. See page 22 for an estimate of the costs to study at UWA.

Study abroad

If your university or college does not have a formal student exchange agreement with UWA, or if there is an agreement but the allocated number of places at UWA have been filled, or if you have completed high school but not yet enrolled at a university, you can study with us as a study abroad student. To study on this basis, tuition fees are payable. The fees are based on a standard enrolment of 24 points¹ per semester.

study.uwa.edu.au/global

Study Abroad and Exchange students have the same rights and privileges enjoyed by other UWA students and must also abide by the same rules and regulations.

¹ Enrolling in additional credit in excess of 24 points per semester will result in additional fees.

Selecting your classes

How many units can I take?

Study Abroad students must enrol in a full academic load of 24 points per semester. Most units are worth six points, so this generally works out to four units per semester. Typically, most units are offered for a semester, but some must be taken for a full year.

How do I select my units?

You can use the online UWA Handbook to browse through units offered at UWA. All units consist of four letters detailing the discipline of the unit (such as ECON for Economics, PSYC for Psychology) and four numbers.

- Units with numbers beginning from 1 to 3 are generally undergraduate units. A code beginning with 1 represents first-year level studies, 2 represents second-year level studies, and so on.
- A unit with a number beginning with 4 is generally an honours-level unit and may require a minimum of three years' study prior to enrolling. Please note honours-level units

are not always available to Study Abroad students.

- Some units coded 3xxx and 4xxx are common to both postgraduate and undergraduate programs.
- Units with numbers beginning with 5 and above are postgraduate level and may require a minimum of three years' tertiary study in a relevant field prior to enrolling.
- The Bachelor of Law program has been replaced by the Juris Doctor. As such, there are several restrictions to which Law units Study Abroad students can enrol in. For more information, contact the Global Learning Office.

Medicine, Dentistry and postgraduate Psychology units are not available to Study Abroad students.

handbooks.uwa.edu.au

Location

You may choose to study either at the Crawley Campus in Perth or at the Albany campus, which is located in a rural city five hours south of Perth. If you are considering Albany, please contact the Global Learning Office first.

Prerequisites

You will need to meet the relevant academic prerequisites both in level and content.

Teaching period

You should normally select units which are offered in Semester 1 or Semester 2. If you wish to choose units offered in other study periods, contact the Global Learning Office.

Academic year

The UWA academic year runs from late February to late November. If you are studying for two semesters and commencing in Semester 2, you will not be able to make your unit selection for your second semester until around late October when new units for the following academic year will be available.

Find out more study.uwa.edu.au/courses-and-careers/study-abroad-and-student-exchange/completing-exchange-at-uwa

What can I study?

Undergraduate and postgraduate study

UWA's undergraduate curriculum provides you with an extensive range of majors and increased flexibility to build your own study plan according to your interests and the credit requirements of your home university. You can choose courses at different levels and across more than one discipline, provided you meet the academic prerequisites. Please note that some postgraduate units may be restricted.

handbooks.uwa.edu.au

Choose units from the following majors and specialisations:

Business School

- Accounting
- Business Law
- Economics
- Finance
- Human Resource Management
- Management
- Marketing
- Professional Economics

School of Design

- Architecture
- Asian Studies
- Fine Arts
- History of Art
- Landscape Architecture

School of Humanities

- Classics and Ancient History
- English and Literary Studies
- French Studies
- German Studies
- History
- Italian Studies
- Philosophy
- Spanish Studies

Conservatorium of Music

- Music: Electronic Music and Sound Design
- Music: General Studies
- Music: Specialist Studies
- Music Studies

Law School

- Business Law
- Law and Society

School of Social Sciences

- Anthropology and Sociology
- Archaeology
- Asian Studies
- Chinese Studies
- Communication and Media Studies
- Indonesian Studies
- Japanese Studies
- Korean Studies
- Linguistics
- Political Science and International Relations

School of Agriculture and Science

- Agricultural Science
- Environmental Science
- Geographical Science
- Human Geography and Planning
- Natural Resource Management

School of Biological Sciences

- Botany
- Conservation Biology
- Marine Science
- Science Communication
- Zoology

School of Earth Sciences

- Geology

School of Human Sciences

- Anatomy and Human Biology
- Exercise and Health
- Neuroscience
- Physiology
- Sport Science
- Sport Science, Exercise and Health

School of Molecular Sciences

- Biochemistry and Molecular Biology
- Chemistry
- Genetics

School of Psychological Sciences

- Psychological Science
- Psychology

School of Engineering

- Engineering Science

School of Physics, Mathematics and Computing

- Computer Science
- Data Science
- Mathematics
- Physics

School of Biomedical Sciences

- Microbiology and Immunology
- Pathology and Laboratory Medicine
- Pharmacology

School of Population and Global Health

- Population Health

School of Indigenous Studies

- Indigenous Knowledge, History and Heritage

Research

UWA is a leading research institution with prestigious links to thought leaders around the world. Many of our courses encourage students to explore research, so there may be opportunities for you to undertake research during your undergraduate studies. If you would like to pursue undergraduate research during your time at UWA, you will need to confirm all arrangements prior to arrival. Contact the Global Learning Office for more information.

If you are interested in graduate research, you will need to contact a Graduate Research Coordinator in the appropriate school to discuss a proposed research topic and confirm the availability of your preferred supervisor before contacting the Global Learning Office. Visit postgraduate.uwa.edu.au/contact/coordinators for a list of Graduate Research Coordinators.

Academic requirements

High School Students

At the time of the application, you should have completed a high school qualification in accordance with the admission requirements for entry into the relevant bachelor's degree program at UWA (for example, Bachelor of Arts).

study.uwa.edu.au/how-to-apply/entry-requirements/international-and-overseas-qualifications

Undergraduate Students

To study at UWA as a study abroad student, you should normally:

- Have completed one semester of tertiary study at a recognised institution
- Be in good academic standing at your home university

Postgraduate Students

Admission to postgraduate courses normally requires the completion of an undergraduate degree.

In addition to meeting the Academic requirements, students must meet one of the English Language requirements as set below:

English language requirements

Qualification equivalents	UWA requirements
GCE A level	Minimum grade in E in English Language, English Literature or English Language and Literature
German Abitur	Minimum grade 3, in conjunction with a minimum grade B in DAAD (German Academic Exchange Service) Certificate of Language Proficiency test
IELTS (Academic)	Overall minimum score of 6.5, no band lower than 6.0
International Baccalaureate Diploma (IB)	English A1 at HL or SL, minimum score 4 English A2 at HL or SL, minimum score 4 English B at HL, minimum score 5
Norwegian Vitnemal	Minimum grade 4 in the English component
Pearsons Test of English (PTE) (Academic)	An overall score of 64 with a minimum score of 59 in the speaking and writing sections, and no less than 54 in the other sections
TOEFL	Internet-based TOEFL (iBT): an overall score of 82 or above with a minimum score of 22 in writing, 18 in reading, 20 in speaking and 20 in listening

For a full list of the University's English language requirements, refer to study.uwa.edu.au/elc. Results are valid for two years only. A higher level of English is required for some courses.

Alternative English Language Pathway

Students who do not meet the standard English language requirements, as shown in the table above, may be approved for admission to UWA on the basis of the alternative English language competency requirement. Students are assessed on a case by case basis and, if approved, they must enrol in the following unit in their first semester of enrolment:

Professional and Academic Communications (PACM1100). Minimum scores for this conditional offer are:

- IELTS 6.0 (no band score below 5.5)
- Internet-based TOEFL 70 (17 in Listening, 19 in Speaking, 14 in Reading, 20 in Writing)
- UWA CELT Pathway: EPA Pathway 65% (no band less than 60%)
- UWA CELT Pathway: Bridging Course Module 1 65% / Module 2 60% (no less than 60%)

Help with English language skills

UWA Centre for English Language Teaching (UWA CELT)

UWA CELT offers accredited English Language Intensive Courses for Overseas Students (ELICOS) programs in General English and English for Academic Purposes, as well as preparation for IELTS as an internationally recognised examination.

Academic English and Study Skills Bridging Course (Bridging Course)

The Bridging Course has been designed for international students who wish to study at UWA but who do not have the University's required level of English proficiency. The course is also suitable for students with unconditional entry into UWA who would like to further develop their language ability, study and research skills and confidence before commencing tertiary study.

A 70 per cent pass in the Bridging Course meets the University's English language requirement for most undergraduate and postgraduate courses, although some postgraduate courses have a higher English language requirement.

Bridging Course minimum entry requirements

Requirements	20-week program
IELTS	5.5 with no band score below 5.0
Internet-based TOEFL	58 with a minimum score of 18 in the writing section, 16 in the speaking section and 12 in the listening and reading sections
Cambridge First Certificate in English	Minimum score of 60 and borderline for each skill
Pearson Test of English (Academic)	Overall score of 49 with no individual score below 42
UWA CELT General English	Upper-intermediate with a minimum of 70 per cent (no individual skill below 60 per cent)
UWA CELT English for Academic Purposes	Minimum of 65 per cent (no individual skill below 60 per cent)

The University offers a choice of English language programs through the UWA Centre for English Language Teaching (UWA CELT) to prepare international students for tertiary academic study.

www.celt.uwa.edu.au | +61 8 6488 3539

Accommodation at UWA

We understand how important it is to find good-quality accommodation close to the UWA campus. There are many options available to suit your individual needs, and guaranteed accommodation is offered to all new full-time students. For details, visit study.uwa.edu.au/student-life/accommodation/guaranteed-accommodation

Living on campus

UWA's five residential colleges – University Hall, St Catherine's College, St George's College, St Thomas More College and Trinity Residential College – provide more than just a room. Each offers a world-class living and learning environment only a few minutes away from campus. Make lifelong friends from across Australia and around the globe, and enjoy a lifestyle that includes meals, internet, all your utilities and academic support, as well as social, cultural and sporting activities and programs.

You can apply up to 12 months before you want to live on campus. There is no deadline, but we recommend applying as early as possible – you don't have to wait until you receive an offer from UWA.

uwa.edu.au/colleges

How to apply

1. Research the college websites to decide which suits you best.
2. Complete and submit your application via the online portal at livingoncampus.uwa.edu.au.
3. You will be contacted directly by your first-preference college within two weeks.

Overview of 2019 residential college fees and charges¹

	St Catherine's College	St George's College	St Thomas More College ²	Trinity Residential College	University Hall ²
Weekly fee ²	AUD\$480 ⁴	AUD\$490 ⁴	AUD\$380	AUD\$455	AUD\$365
Standard year fee ³	AUD\$19,200	AUD\$19,450	AUD\$14,820	AUD\$18,200	AUD\$14,600
Number of beds	430	225	400	350	750

(1) The fees overview should be read in conjunction with each college's fee schedule. Prices quoted are based on 2019 standard single room rates; additional room types are also available. Weekly fees vary depending on the room type, length of stay and additional inclusions. Fees for 2020 will be available late 2019; check the individual college websites for the latest and most comprehensive information.

(2) The weekly fee includes 14 meals per week for University Hall, and 16 meals per week for St Thomas More College. Meal packages can be upgraded at an additional cost. All other colleges' rates are inclusive of 21 meals per week.

(3) Standard yearly fee includes accommodation, meals, utilities, cleaning, access to communal college facilities, plus a variety of programs and activities offered throughout the year. Other upfront fees may apply, depending on the college or room type allocated. Refer to the individual college websites for full fee schedules.

(4) Limited shared-room options are also available at St Catherine's College and St George's College on request, subject to availability.



Living off campus

UWA owns and manages a group of houses, units and studio apartments, collectively known as Crawley Village. They are available for UWA students to rent, and are offered either unfurnished or with partial furnishings.

Properties are located within walking distance of the UWA campus, shops, cafés and restaurants, banks and other amenities, and are ideally suited to postgraduate students or students with families.

You can rent an apartment, unit or house on your own or you can share with others. Whether you choose to rent a UWA-owned property or one that is privately or commercially listed, please note that you take full responsibility for the property and sign a rental contract.

As a guide, the average cost of renting or leasing an unfurnished one- or two-bedroom unit close to UWA is between AUD\$265 and AUD\$500 per week. There are also upfront costs to consider, such as a bond or security deposit, and utility connection fees. Other costs, such as electricity and/or gas, telephone and food, are usually not included in the weekly rent.

accommodation.uwa.edu.au/off-campus

UWA Housing Database

UWA Accommodation provides an online housing database for students. International students who have been offered a place at UWA, but have not yet enrolled, can still create an account and access the database, which includes listings by UWA students or staff members who have a vacant property or room available to rent.

accommodation.uwa.edu.au/housing-database

Perth City student accommodation

Students wishing to live closer to Perth City have two new purpose-built student accommodation options, endorsed by UWA. **Campus Perth** and **The Boulevard** (by The Student Housing Company) offer a wide range of private and shared room options; you'll also have access to a variety of social spaces and on-site support. Both are located in Northbridge, Perth's vibrant social and cultural precinct, and close to public transport.

study.uwa.edu.au/cbd-accommodation

Living on campus

uwa.edu.au/colleges

Colleges Admissions Office

Tel +61 8 9488 0500

Email residentialcolleges@uwa.edu.au

Living off campus

accommodation.uwa.edu.au

UWA Accommodation Office

Tel +61 8 9488 0500

Email accommodation@uwa.edu.au



Money matters

Compared to other major cities around the world, living and studying in Perth is a smart decision for international students.

One of Australia's most affordable capital cities

Perth is more affordable than Adelaide, Brisbane, Melbourne and Sydney, according to the Economist Intelligence Unit's *Worldwide Cost of Living Survey 2018*.

study.uwa.edu.au/cost-of-living



Cost of living

The annual cost of living in Perth depends on your lifestyle and the type of accommodation you choose, however AUD\$450–\$600 per week is generally sufficient for single students to live comfortably (this does not include tuition fees or medical cover). Consider extra funds to cover various items such as airfares and textbooks. There may also be ancillary fees applicable to your course.

Working in Australia as an international student

Under the terms of a student visa, once an international student has commenced their course, they may work up to 40 hours per fortnight while their course is in session, and unlimited hours during scheduled course breaks.

homeaffairs.gov.au

Student Services and Amenities Fee (SSAF)

The UWA Student Services and Amenities Fee (SSAF) is a compulsory fee that directly benefits all UWA students. The fee is used to develop and provide a range of recreational facilities together with social, education and representation activities and services. This fee is not applicable to exchange students.

study.uwa.edu.au/fees-scholarships

Overseas Student Health Cover (OSHC)

The Department of Home Affairs requires international students applying for a student visa to have Overseas Student Health Cover (OSHC) for the entire duration of their student visa. This is not applicable to students from Belgium, Norway and Sweden, who are covered under a separate arrangement. OSHC is offered by a number of providers. You may obtain OSHC from the provider of your choice. study.uwa.edu.au/international-students/moving-to-perth/health-requirements

The University of Western Australia has a 'preferred provider' agreement with Allianz Global Assistance. On acceptance and payment of your offer, UWA will arrange health cover with Allianz Global Assistance for the duration of your student visa. For information on the University's agreement with Allianz Global Assistance, refer to study.uwa.edu.au/international-students/moving-to-perth/health-requirements.

Tuition fees

If you are an exchange student studying under the terms of a formal student exchange agreement, you will be exempt from paying tuition fees and the Student Services and Amenities Fee. If you are not an exchange student, tuition fees and the Student Services and Amenities Fee (SSAF) will be payable on a semester basis. Tuition fees are calculated on a standard enrolment of 24 credits per semester. Enrolments of more than 24 credits will be charged on a pro-rata basis. Visit study.uwa.edu.au/student-life/accommodation for the most up-to-date fee information.



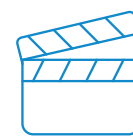
Phone and Internet
\$20 to \$50
per week



Public transport
\$10 to \$50
per week



Car
(after purchase)
\$150 to \$250
per week



Entertainment
\$50 to \$100
per week

How to apply

Applying directly to UWA

If you do not need approval from your home university, you can apply online.

study.uwa.edu.au/how-to-apply/Start-my-application

Applying through a UWA representative overseas

If you are applying via an approved UWA representative, your agent must first nominate you to the Global Learning Office. Once this nomination has been received, you will be sent an email from UWA with advice on how to apply online.

UWA has representatives in more than 60 countries. Check whether your country has a UWA representative:

study.uwa.edu.au/International-students/find-an-international-agent

Applying through your home university

If your university has an agreement with UWA, they must nominate you for the Study Abroad program. Once this nomination has been received, you will be sent an email from the UWA Global Learning Office on how to apply.

Compulsory application documents

- a colour copy of your passport
- your original academic transcript (or a certified copy)
- a proposed study plan
- evidence of English language competency (if applicable)

Application deadlines

Semester 1 (February – June)

Nominations by 15 November

Application and documents due by

30 November

Semester 2 (July – November)

Nominations by 30 April

Application and documents due by 15 May

Tuition Fees

18 point enrolment: AUD \$10,275 per semester*

24 point enrolment: AUD \$13,700 per semester*

* 2019 fees are subject to change. For updated information see

fees.uwa.edu.au/Calculator



Campus map



LOST ON CAMPUS?

Download the Lost on Campus app, available for Apple and Android devices.

For emergencies, contact UWA Security on 6488 2222

Find your way

Map Symbols

- | | |
|--------------------------------|-----------------------------------|
| ● Wheelchair access | ♿ ACROD parking |
| ● Lecture theatre (first year) | ⊕ First aid |
| ♿ Public toilets | ℹ Information/help points |
| 🚗 Parking | 🍷 Food and drinks |
| 💰 ATM | ❓ Security office, Lost and Found |
| 🚌 Bus | ⚡ Underpass |

Important dates 2020

		From	To
Semester 1	Orientation Week	17 February	21 February
	Weeks 1 to 7	24 February	10 April
	Study break	13 April	17 April
	Weeks 8 to 12	20 April	22 May
	Study break	25 May	29 May
	Examination period	30 May	13 June
Break		15 June	24 July
Semester 2	Orientation Week	20 July	24 July
	Weeks 1 to 9	27 July	25 September
	Study break	28 September	2 October
	Weeks 10 to 12	5 October	23 October
	Study break	26 October	30 October
	Examination period	31 October	14 November

Our Global Learning Office team is on hand to answer your questions about studying at UWA. Contact us about how uni works and how to apply, find out more about our courses and discover what life's like as a student.

Global Learning Office
 +61 8 6488 8199 | studyabroad@uwa.edu.au
study.uwa.edu.au/global



Useful links

Accept your UWA offer	uwa.edu.au/accept
Accommodation	UWA on-campus accommodation: study.uwa.edu.au/student-life/accommodation/live-on-campus UWA off-campus accommodation: uwacrawleyvillage.studystays.com.au/ Perth off-campus accommodation: study.uwa.edu.au/student-life/accommodation/cbd-accommodation
Admission qualifications	study.uwa.edu.au/how-to-apply/entry-requirements/international-and-overseas-qualifications
Apply to UWA	study.uwa.edu.au/apply
Cost of living	study.uwa.edu.au/cost-of-living
English language programs	www.celt.uwa.edu.au
Life at UWA	study.uwa.edu.au/international-students
Meet us in your country	study.uwa.edu.au/find-us-in-your-country
Overseas student health cover	study.uwa.edu.au/health-requirements
Study at UWA	study.uwa.edu.au
Student visa information	study.uwa.edu.au/student-visas
UniBuddy	study.uwa.edu.au/chat-to-a-student
UWA events in your country	study.uwa.edu.au/international-students/events-in-your-country



THE UNIVERSITY OF
**WESTERN
AUSTRALIA**



Phone

Speak to the Global Learning
Office 9am–5pm (AWST)
Monday to Friday
+61 8 6488 8199



Email

Email your
enquiries to:

studyabroad@uwa.edu.au



askUWA

Find answers to
FAQs anytime

ask.uwa.edu.au



Web chat

Chat with a Future Students
Adviser 2.30–4.30pm (AWST)
Monday to Friday



[universitywa](https://www.facebook.com/universitywa)



[uwanews](https://twitter.com/uwanews)



[universitywa](https://www.instagram.com/universitywa)



[universitywa](https://www.youtube.com/universitywa)



[uwastudents](https://www.snapchat.com/add/uwastudents)



[澳大利亚西澳大学UWA](https://www.weibo.com/u/1600000000)



[西澳大学UWA](https://www.wechat.com/qrcode?scene=scene_qr)