

Welcome

to the
Trinity International
Foundation Programme



Trinity College Dublin
Coláiste na Tríonóide, Baile Átha Cliath
The University of Dublin



Start Your Journey as a Trinity Student

www.tcd.ie/study/international/foundation-programme



Vice President for Global Engagement Welcome to Trinity

[View on Youtube →](#)

[View on Bilibili →](#)

Welcome to Trinity

- [03 Welcome to Trinity](#) →
- [05 Visa and Immigration Information](#) →
 - [ISD Registration](#) →
- [06 Financial Information](#) →
- [07 Accommodation](#) →
- [08 Health and Insurance](#) →
- [08 Arrival](#) →
- [09 Support Services, Marino Campus](#) →
 - [Support Tutor](#) →
 - [Student Disability Services](#) →
- [10 Support Services, Trinity Campus](#) →
 - [Counselling](#) →
 - [Students' Union](#) →
 - [Clubs and Societies](#) →
 - [Sports Centre](#) →
- [11 Employment](#) →
- [12 Living in Dublin](#) →

Click the menu icon on any page to get back here for navigation

We are delighted to welcome you to the Trinity College Dublin International Foundation Programme, your pathway to starting a degree at Ireland's leading university. Trinity is ranked 1st in Ireland and 101st in the world (QS World University Rankings 2022). Trinity is also ranked 12th most international university in the world (Times Higher Education Ranking 2022). We pride ourselves on being a global research-led university with a diverse and vibrant university community.

This Welcome Guide includes useful information on how we will support you as a new student as well as guidance on visas, immigration, finance and accommodation. We hope you find this Welcome Guide useful and look forward to welcoming you on campus.

View our Welcome to Trinity message from the Vice President for Global Engagement:
 Youtube: youtu.be/bfyDTM-OadY
 Bilibili (China): www.bilibili.com/video/BV1wq4y187U1

In the meantime, please check out our [Student Ambassador Blog](#): tcdglobalroom.wordpress.com

Term Dates:

Term 1: September 18th - December 15th 2023

Term 2: January 2nd - May 24th 2024

Global Room, Trinity Campus

The Global Room is a welcoming student support hub and event space on campus for all Trinity students, managed by the International Student Liaison Officer.

The Global Room service is supported by a team of [Global Ambassadors](#), students trained to help students with a wide range of queries ranging from immigration and accommodation practicalities to the basics of settling into life in Dublin and at Trinity. During the academic term, the Global Room is normally open from 9:30 to 17:30 Monday-Friday.

The Global Rooms runs the New2Dublin programme on Monday evenings for several weeks at the start of term to help incoming students adjust to life in Dublin city and answer questions large and small, from making friends to where to find the cheapest groceries.

Over 300 international-themed events are held in the Global Room during the academic year, such as national holiday celebrations, seminars, movie screenings and information initiatives. These events are run by both the Global Room team and Trinity's wide range of clubs and societies.

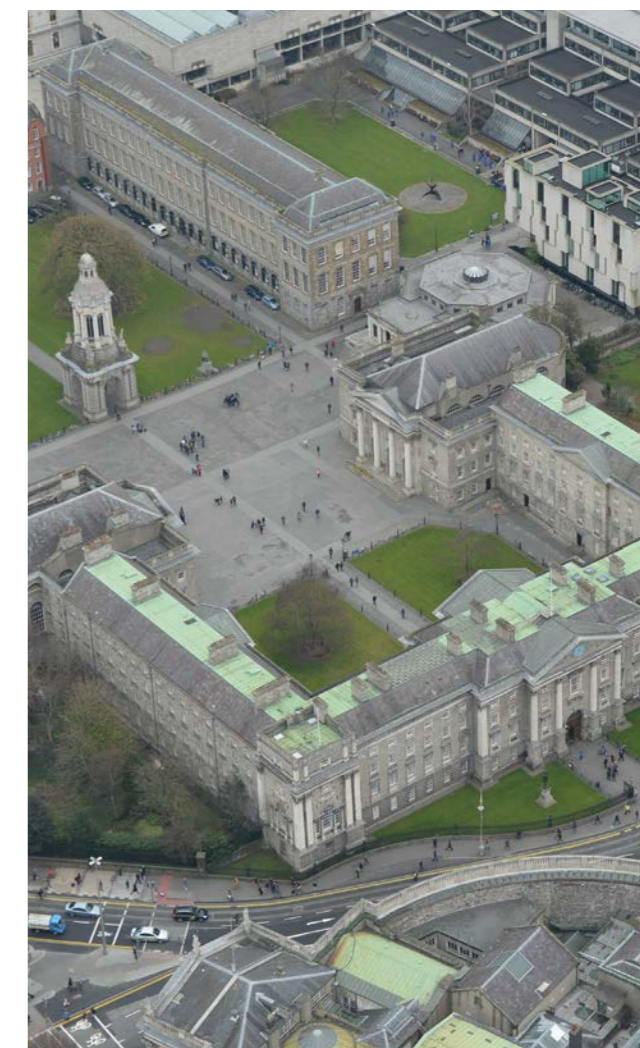
The Global Room is located beside the Academic Registry in the Watts Building. If you have any questions, please contact tcdglobalroom@tcd.ie

www.facebook.com/trinityglobalroom

www.twitter.com/tcdglobalroom

www.instagram.com/tcdglobalroom

www.tcd.ie/study/international/studentexperience/global-room





As an IFP student you are a student of both Marino Institute of Education and Trinity College Dublin and get to enjoy all that each campus has to offer.

Visa and Immigration



Students who hold an EU passport do not require a visa to study and work in Ireland. Some, but not all, non-EU/EEA students require an entry visa for Ireland. For example, students coming from the United States or Canada do not require a visa to enter Ireland.

To see if you require a visa for Ireland visit: www.irishimmigration.ie/coming-to-study-in-ireland

Non-EU students who do not require a visa will still be required to register with Immigration Service Delivery (ISD) after arrival. Please see Immigration information on the next page.

Applying for a Visa

Students should submit their visa applications using the AVATS facility at: www.irishimmigration.ie. The application will only be processed when the online form is completed and the required documentation, passport photograph and appropriate fee are received by the relevant offices as indicated by the online system. There is a dedicated visa processing office in China, India, Nigeria, United Arab Emirates and the United Kingdom. Non-EU students resident in these countries, please refer to your local Irish Embassy website for details of further documentation which may be required.

Please refer to the links below for visa guidelines: www.irishimmigration.ie/coming-to-study-in-ireland

Contact details for embassies can be found here: www.dfa.ie/embassies

Take a look at our Visa and Immigration Video:
Youtube: youtu.be/Wn2js1fQllw
Bilibili: www.bilibili.com/video/BV1JS4y1Z7KP

Mandatory Documentation

- It is a mandatory requirement for non-EU students to have private health insurance and you will be required to show evidence. Non-EU students who will be resident in Ireland for a minimum of one academic year may apply to HSE www.hse.ie to be assessed for entitlements to public hospital for treatment.
- Proof of sufficient funds to support yourself while in Ireland (bank account statements for six months previously and/or grant/sponsorship letter). Please note that, the requirement of €7,000 will be increased to at least €10,000 from 01 July 2023.
- Your International Foundation Programme Final Offer Letter
- Show evidence of language proficiency. For ISD language requirement please refer to: www.irishimmigration.ie/coming-to-study-in-ireland/english-language-requirements-for-study-visas
- Any other documents as requested by ISD or the Irish Embassy through which you are applying. The full list of required documentation is available on the visa and immigration website: www.irishimmigration.ie/coming-to-study-in-ireland/what-are-my-study-visa-options/how-to-apply-for-long-term-study-visa



Checking Your Visa Status

- You should generally allow 8 weeks for processing time.
- You can check online for visa decisions using your visa application number at: www.irishimmigration.ie/visa-decisions
- When your visa is approved, the Embassy to which you sent your documents will affix a visa to your passport.

Immigration At the Airport

All non-EU/EEA citizens who do not hold an EU passport, whether visa-required or not, are subject to ordinary immigration controls at the port of entry (ordinarily the airport). The Immigration Officer on duty determines who is actually allowed to enter Ireland. If your documentation is in order, he/she will stamp your passport for up to three months (90 days).

At the immigration desk, you should be prepared to present the following documents:

- Your valid passport
- Your International Foundation Programme Offer Letter
- Confirmation of fees paid (deposit and first installment) or scholarship grant received
- Proof of health insurance

You should keep these documents with you in your carry-on luggage as immigration border control is before baggage claim. You should also keep all these documents ready, as you will need them again when you register with Immigration Service Delivery (ISD).

Immigration Service Delivery (ISD)

Immigration Service Delivery (ISD) is located on Burgh Quay, Dublin 2, approximately a 5-minute walk from the Trinity campus. You must have an appointment to visit the ISD Office.

To book an appointment visit: burghquayregistrationoffice.inis.gov.ie. Students should only book appointments through ISD and should never use unauthorised third-party services.

In order to register with ISD, students must collect the following documents to support their application. Please allow 5 working days for Irish bank statements and for documents needed from Marino Institute of Education.

Mandatory Supporting Documents

- Proof of registration with Marino Institute of Education
- Bank statement from an Irish bank account showing at least €4,500 available. Foreign bank statements are also acceptable if you have proof that this account can be accessed and you can provide a 6-month bank statement.
- Valid passport
- Proof of health insurance
- €300 fee (credit/debit card or bank draft only; no cash).

Under 18 year olds are legally required to have a guardian to accompany them to their ISD appointment. Trinity College Dublin, International Foundation Programme recommends godsil.ie

More information about the process will be shared during the induction on your first day.





Financial Information

Tuition Fees

The full listing of tuition fees is available here:

www.tcd.ie/study/international/foundation-programme/fees.php

Fee Payment

Details of fee payment are included in your offer letter. The deposit should be paid within fourteen days of receiving an offer in order to secure your place on the programme. Payment of instalment one should be made by 31 May 2023. Payment of instalment two is due on or before 3rd January 2024.

TransferMate Payment Option

Trinity and Marino partner with TransferMate to allow international students to pay from their home country in their local currency. The service also provides a detailed receipt and helps the Student Finance team better track payments to student numbers than using traditional wire transfer payments.

There is no international transfer charge for using the service. This is the recommended method of payment for international students, with credit card payments as a second preference. The TransferMate receipt is accepted by visa offices as proof of payment of tuition fees: mietcdifp.paytostudy.com

Currency

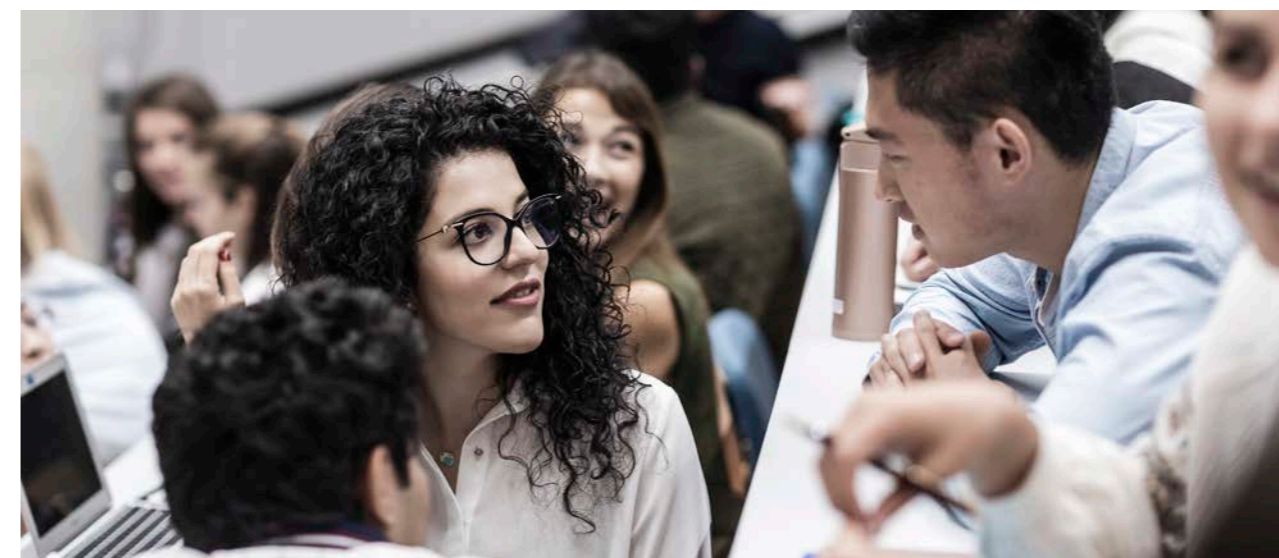
The currency in Ireland is the Euro (€).

Opening a Bank Account

You must open a bank account in person in a bank branch. You are advised to open an Irish bank account after you secure accommodation in Ireland. More information about opening a bank account will be shared during the induction on your first day.

Bringing Money to Ireland

Please bring only a small amount in Euro for your arrival. The University does not have any facilities to keep cash safe for you. You should enquire with your bank at home if you can use your debit or credit card in Ireland, as this could be a safe way to obtain cash immediately after your arrival. Once you have opened a bank account in Dublin, money can be transferred by electronic / wire transfer into your new account. Before you leave home, talk to your local bank to find out all the details about making transfers to your account in Ireland (e.g. maximum amount, how long it takes, how much it costs) so that you can plan the best system for your circumstances. International Visa/ Debit cards often require proof of photo ID. Travellers' cheques are not widely accepted in Ireland.



Accommodation

Marino Accommodation International Foundation Programme

All International Foundation Programme students are given priority for rooms in Marino campus. Accommodation is apartment-style with en-suite bathrooms, with single rooms sharing well-appointed kitchens and sitting rooms.



Applying for Marino Campus Accommodation

Applications for all Marino accommodation are made online. Please contact mie@eber.life for more information.

Accommodation Advisory Service

If you do not secure University housing or wish to find your own accommodation, the Trinity College Students' Union operates an Accommodation Advisory Service. It is located on the ground floor in the Students' Union building (House 6) on Trinity College Campus. The service is open Monday to Friday from 09:30 to 17:30.

The Accommodation Advisory Service offers computers and phones free of charge to assist with your search. A full-time staff member will be available for queries about accommodation-related issues. The Service will provide information on tenant's rights and health and safety information. The Service also provides an excellent opportunity to meet other students looking for housing.

For more information or queries relating to private rented accommodation you can contact the Welfare Officer on welfare@tcdsu.org or on +353 (0)1 646 8437.

The Students' Union has also produced a guide on living in Dublin: www.tcdsuaccommodation.org/living-in-dublin-guide
www.tcdsuaccommodation.org

Private (Non-University) Accommodation

Dublin offers a range of options from shared houses and flats to private student residences.

If you have not secured housing in advance of your arrival, we strongly advise you to arrive as early as possible in order to maximise your chances of finding suitable and affordable accommodation, as demand for housing in Dublin is extremely high.

Digs/Lodgings

The Students' Union maintains a list of host families who have rooms (and in some cases full board) available to students.

Digs are traditionally a little cheaper than private rented accommodation. Digs generally cost between €100 - €150 per week and vary in what they include (many include bills, meals, laundry, etc.) Make sure to clarify what the cost includes.

Private Rented Accommodation

There are a number of places online that you can search in order to view properties in all areas of Dublin and to get an idea as to what prices you should expect:

www.daft.ie

www.myhome.ie

www.rent.ie

www.collegecribs.ie

www.gumtree.ie

www.property.ie

www.housinganywhere.com

To avoid rental scams or disappointment, you are strongly recommended to view any property in person before paying a deposit or paying any money online.

Temporary Accommodation

Trinity cannot provide assistance for booking private accommodation in a hostel or hotel. For more information about hotels, hostels and temporary rentals in Dublin, please see:

www.discoverireland.ie

www.hostelworld.com/hostels/Ireland

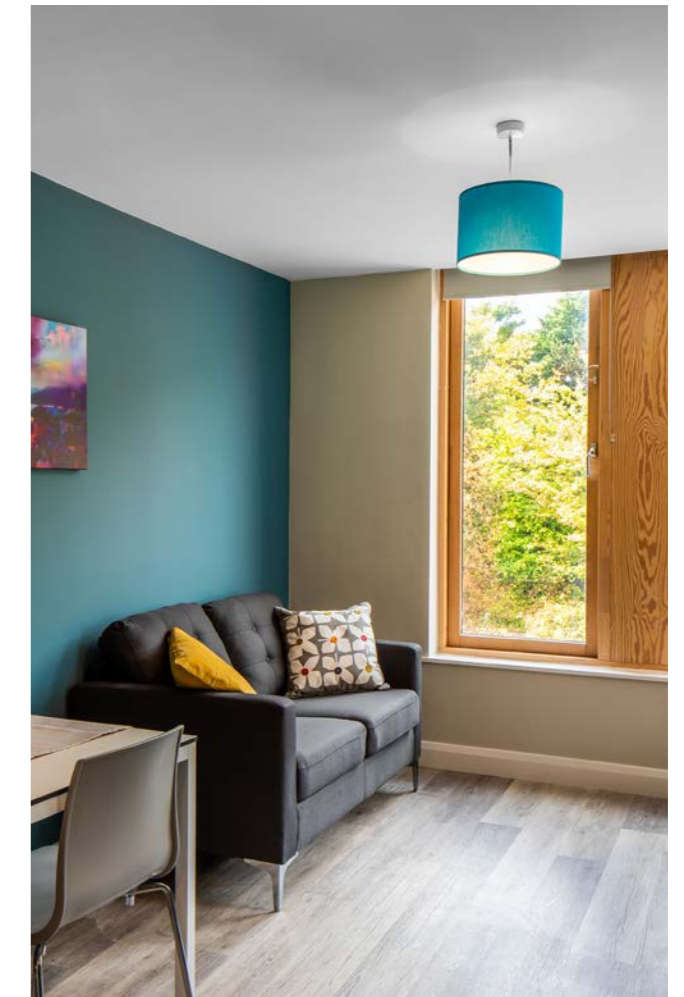
www.airbnb.ie

Need a Roommate?

You can both search and place an ad on our Accommodation Advisory Service website to help find someone to live with.

www.tcdsuaccommodation.org

Alternatively, you can search on www.daft.ie



Health and Insurance

Trinity and Marino recommend that you have a level of insurance to cover your health needs and requirements for the duration of your studies. For example, if you have a pre-existing condition, please check the level of insurance cover in any new policy to ensure that it will cover this.

Trinity has a group insurance scheme for international students with Irish Life that is designed specifically for international students and which covers pre-existing conditions and the normal waiting period for cover is waived. The cost of any policy varies based on age of the applicant. Ensure you state clearly that you are a Trinity student under the insurance group scheme "Trinity College Dublin Non-EU Students policy". Please use the code: 20932 - Trinity College Dublin Non-EU Students to avail of this scheme. You can then choose an insurance policy that suits your individual needs.

Further information is available at:

Irish Life: www.irishlifehealth.ie

VHI Healthcare: www1.vhi.ie/home

Laya Healthcare: www.layahealthcare.ie

Study and Protect: www.studyandprotect.com/unilanding.aspx

Subsidised Health Services

Non-EU students who will be resident in Ireland for a minimum of one academic year may apply to the Health Service Executive to be assessed for entitlements to public hospital treatment under the same conditions as an Irish citizen. Non-EU students staying less than one academic year do not have any entitlement to free or subsidised health services. www.hse.ie



Student Medical Services

Fairview Medical Centre registers all incoming students to Marino through the Registrar's Office in the college. The Medical Centre has a team of doctors and nurses on duty. Services available include illness review & fitness to attend college, phlebotomy, injections, clinical dressings, well woman services, asthma services, etc. Colds and Flu are both viruses and do not generally need a doctor's visit. There is a local pharmacy across the road from Marino for over the counter remedies.

The Medical Centre is a 10 minute walk from the Marino Campus and is open from 9am until 5pm on week days.

There is an emergency service on Saturday mornings.

Medication

If you need to bring prescribed medication until you can find an alternative source in Ireland, please note that the maximum amount of imported medication permitted is a 3-month supply, which must be cleared through Customs by the Irish Medicines Board. Customs will only clear medication that is licensed for use in Ireland.

Arrival

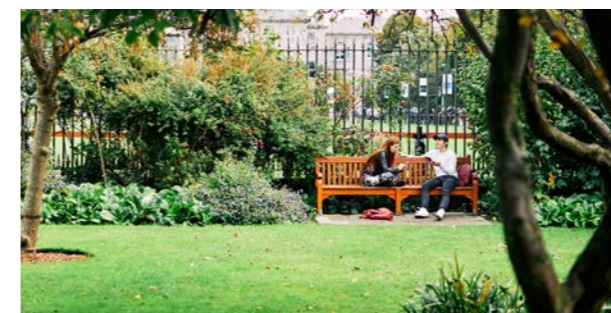
Please see the Immigration section on page 5 regarding the documents necessary for non-EU passport holders.



Customs

After collecting your luggage, you will proceed through Customs. Usually, there are two channels for arrivals: the green channel if you have nothing to declare and the red channel if you have goods to declare.

Please check before you leave your home country what you are allowed to bring into Ireland. Further information can be found here: www.citizensinformation.ie/en/travel_and_recreation/travel_to_ireland/customs_regulations_for_travellers.html



Airport Meet and Greet Service

If you are arriving by plane and have already arranged an airport collection, you will be met by the driver in the Arrivals Hall. The driver will be holding a sign with your name on it. We will provide you with the name and telephone number of the driver in advance of your departure. If you experience any delay, please inform the driver. Please do not pay the driver as your fare will be added to your account. If you are heading directly to your accommodation booked on campus at Marino Institute of Education, the driver will take you to collect your keys – they will have been informed where you will be staying, but it is a good idea for you to have the details to hand.

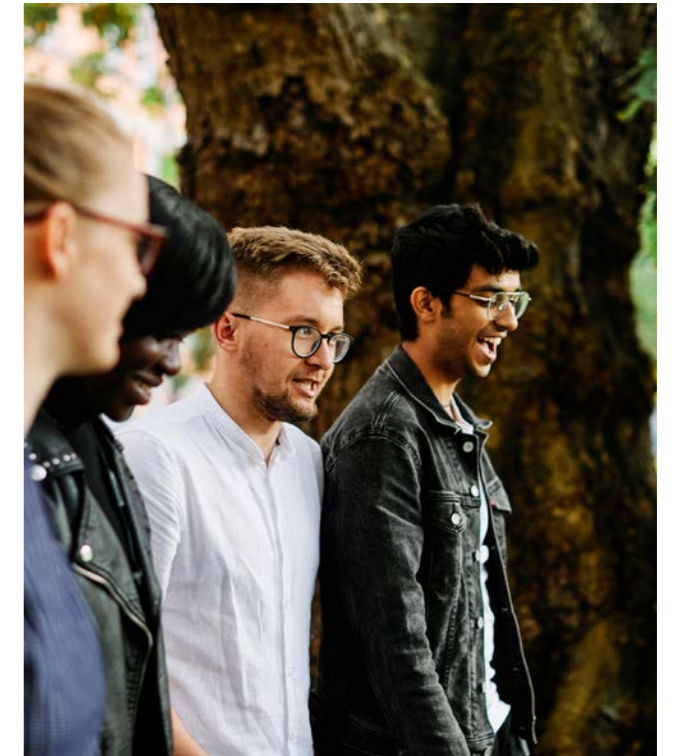
Travelling to Marino

If you are travelling directly to your accommodation, the safest way is by taxi from Dublin Airport. Prices for journeys to different parts of the city are posted at the official taxi ranks, found on the forecourts directly outside Terminals 1 and 2.

Support Services, Marino Campus

Support Tutor

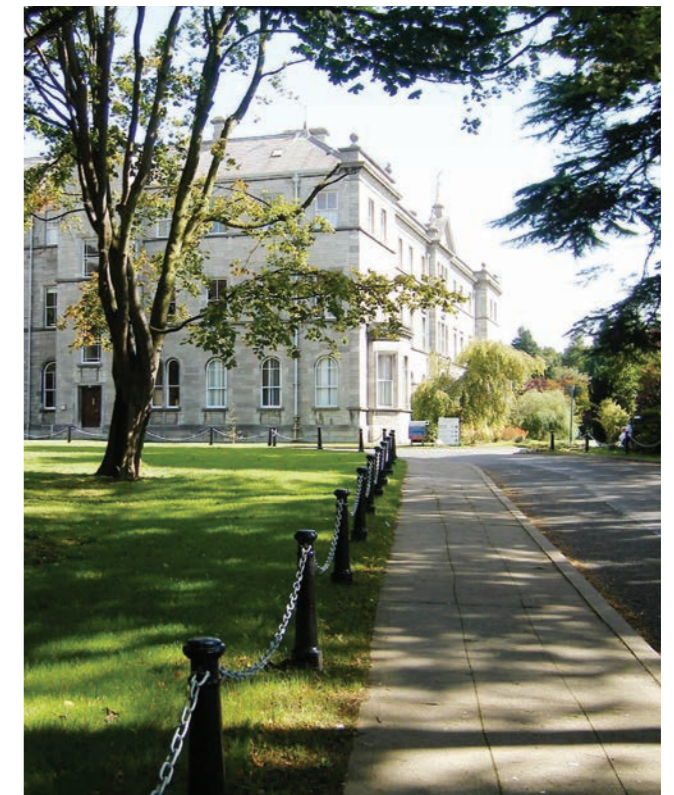
Marino assigns a Tutor to each International Foundation Year student. A Tutor is a member of the academic staff who is appointed to look after the general welfare and development of the students in his/her care. Whilst the Tutor may be one of your lecturers, the role of Tutor is quite separate from the teaching role. Tutors are a first point of contact and a source of support, both on arrival and at any time during your foundation year. Their main function is to advise, listen to concerns, help you deal with issues as far as possible and refer more serious difficulties to the appropriate student services. They provide confidential help and advice on personal as well as academic issues or on anything that has an impact on your life. They will also, if necessary, support and defend your point of view in your relations with the Institute. You will meet your Tutor during the first few weeks of the academic year.



Student Learning Development

The Marino Student Learning Development (SLD) Service is delivered in conjunction with Trinity. This service provides learning support to help MIE students reach their academic potential. We work with students who are struggling with their studies as well as high achieving students who want to improve their performance.

There are workshops and events, throughout the year, on a range of academic and learning skills e.g. self-management skills, study and exam skills, presentation skills, writing and critical thinking skills. Additionally, there is a series of online workshops for off-campus students. Students can also book a one-to-one basis by appointment, for individual queries and students can also come along to our drop-in clinics which operate on a first come basis.



Student Disability Services

The Disability Service in MIE is delivered in conjunction with Trinity College Dublin Disability Service since 2012. The Disability Service operates on a disability needs basis, providing direct support to students who disclose a disability by, via both a meeting with a Disability Officer, and a referral to other disability supports such as Assistive Technology (AT) and Occupational Therapy (OT) services, as appropriate, in MIE or Trinity College Dublin (Trinity).

Support Services, Trinity Campus

Students' Union

Every registered student at Trinity's International Foundation Programme is automatically a member of the Students' Union. The Students' Union is a representative body with five full-time student sabbatical officers and a number of part-time officers, who look after the educational and welfare needs of Trinity's student population, as well as organising entertainment and events. The Students' Union is based in House 6 in Trinity's Front Square, where it runs an office with up-to-date accommodation and employment advice and listings. Within the building you will find the Students' Union offices plus a newsagent, which stocks sweets, sandwiches, fruit, drinks, basic groceries and the cheapest newspapers in the city. Other services including the Students' Union Bookshop Co-op can be found here: services.tcdsu.org

Photocopying facilities are available, and the Student Travelcard can be purchased here. There is also a Students' Union in the Hamilton Building.



Clubs and Societies

A great way to get to know people is by joining one of Trinity's 120 plus student societies which cover everything from the Afro-Caribbean Society to the Zoological Society. The societies meet regularly and provide an excellent opportunity to meet other students with similar interests. Among the societies are the Philosophical Society (the "Phil"), dating from 1684 and the Historical Society (the "Hist") dating from 1770. There are also many course-related societies, such as the History and the Engineering Society.

Additionally, there are 50 sports clubs in Trinity, so no matter what your sporting preference you will find a club in Trinity to suit you. Or you may like to try something new such as rugby, soccer, hockey, swimming, tennis, Gaelic games, basketball, volleyball, cricket or martial arts. You can turn up at any student society meeting and be sure of a warm welcome. While some societies are free there is usually a small joining fee, anything from €1 to €10 for the bigger sports clubs.

Full details of all the societies can be found at: www.trinitysocieties.ie and details of sports clubs can be found at www.tcd.ie/sport/student-sport. You can meet society reps and sign up in Front Square during Freshers' Week.

www.trinitysocieties.ie

www.tcd.ie/sport/student-sport

Trinity Sports Centre

Membership to the Trinity Sports Centre is included in your registration. All registered students with a current Trinity ID card will have full access to the state-of-the-art Sports Centre.

You will need to call to the reception desk on your first visit to activate your ID card, and then you can come and go as you please. You will have free access to the Fitness Theatre, which has a full range of cardiovascular and weights stations. The 25m swimming pool has an adjustable floor and disabled hoist. Also available are the 11m-high climbing wall, aerobics fitness and cycling studios, mind and body studio, changing rooms, ancillary hall for martial arts and main hall for a variety of indoor sports.

There is a nominal fee for some services such as fitness classes. Off campus there are extensive playing fields at Santry and the Trinity Boat Club has its boathouse on the River Liffey at Islandbridge.

www.tcd.ie/sport

Employment

Note: EU passport-holders have the same rights to work as Irish citizens. Non-EU citizens must register with Immigration Service Delivery (ISD) before commencing employment.

How to Find a Part-Time Job

Register with MyCareer, our online careers portal managed by Trinity Careers Service, to find current jobs available to students and graduates. These include part-time jobs and summer work. See more at: www.tcd.ie/careers/mycareer

You can also sign up to the Students' Union Jobs mailing list by emailing sujobs@tcd.ie

Other employment websites which are frequently used by students are:

www.monster.ie

www.jobs.ie

www.irishjobs.ie

www.jobbio.com

www.indeed.com

To find part-time work in a supermarket, retail shop, café, bar or restaurant, it is common practice to visit the establishment with your CV and ask about job vacancies.

The international students section of the Trinity Careers Service website has more information about working as an international student: www.tcd.ie/careers/students/international

Casual Employment For Non-EU Students

Casual employment means you can work for 20 hours per week, except for two standardised periods when it is permissible to work full-time (up to 40 hours per week). The periods are 15th December to 15th January and 1st June to 31st September only, corresponding to the traditional summer and winter college holidays. These dates are fixed for all non-EEA students, regardless of the actual college teaching calendar for their course. Further information is available at: www.internationalstudents.ie/info-and-advice/immigration/working-in-ireland

All employees in Ireland must have a PPS number for tax purposes.

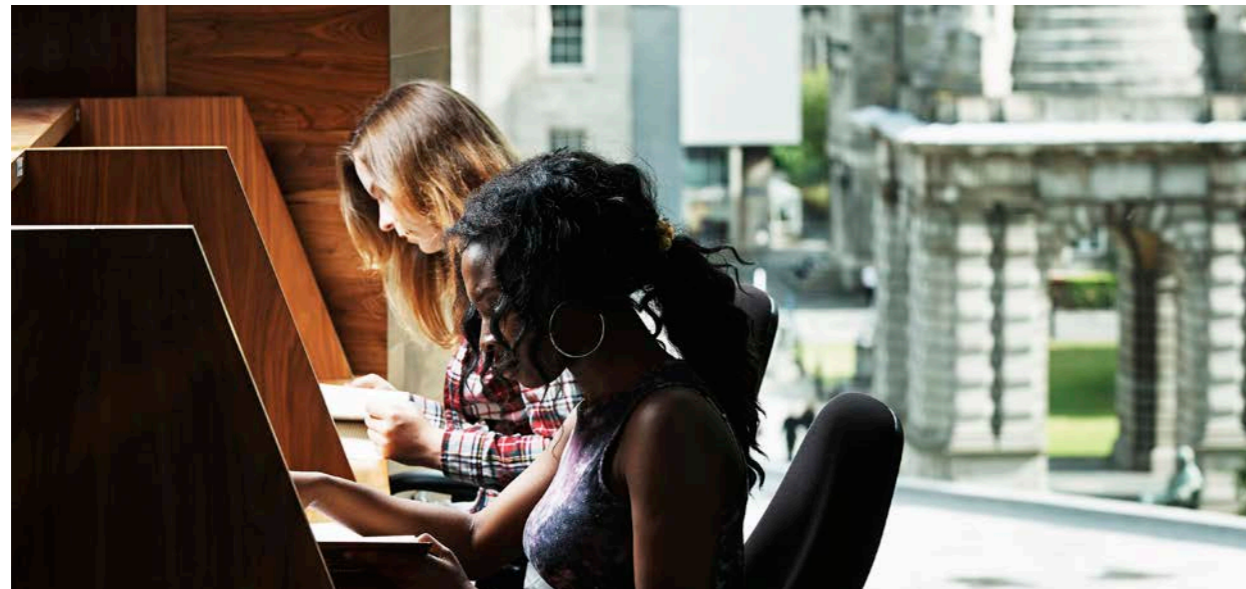
Obtaining a PPS Number

A PPS number serves as your tax identification number for employers. You can apply for a PPS number with the following documents:

- Passport
- Proof of address

For more information, please see here:

www.gov.ie/en/service/12e6de-get-a-personal-public-service-pps-number



Living in Dublin

Cost of Living

Cost of living will vary widely depending on your circumstances and lifestyle. The following figures represent estimated living costs for one academic year (September – June). Please note that the figures below do not include travel outside of Dublin or entertainment.

Rent (shared apartment)	€7,500 - €10,000
Utilities	€1,100
Meals	€3,300
Books and Miscellaneous	€2,750
Commuting	€1,100
Health Insurance*	€600
Immigration registration (if applicable):	€300
Understanding Ireland Optional 1 week pre-term programme	€400
Total	€17,050 - €19,550

*Insurance can range in price from €200 - 1,800

Dining, Trinity Campus

There are several eateries on campus for students including the Dining Hall and Buttery Food Court, Westland Eats in the Hamilton Building, the Forum Restaurant in the Business School and the Pavilion Bar. There is also the Students' Union Café in the Goldsmith Hall. The Students' Union Café, which is run by students, serves hot sandwiches for the cheapest prices on campus. In addition, there are coffee shops in Áras an Phiarsaigh (beside IT Services) and in the Arts Building serving sandwiches, snacks and hot drinks. Further information can be found here: www.tcd.ie/accommodation/college-catering Please note Trinity does not operate meal plans. There is a restaurant on the Marino campus that offers a wide variety of breakfast and lunch options, including halal meals.

Groceries

It is best to go to the big supermarkets like Dunnes Stores, Tesco, Supervalu, Aldi and Lidl. The closest supermarkets to Trinity's campus are Dunnes Stores in the St. Stephen's Green Shopping

Centre at the top of Grafton Street, Marks & Spencer on Grafton Street, Tesco on Upper Baggot Street, Tesco on Fleet Street in Temple Bar, Lidl on Moore Street and Aldi on Parnell Square.

Shopping

For household items like bed linen and crockery, Penneys on Henry Street and Dunnes Stores in the St. Stephen's Green Shopping Centre have excellent inexpensive ranges. In addition, student-favourite IKEA is located to the north of the city. It is serviced by the 140 bus. The shops in and around Grafton Street offer a range of clothing and housewares at a wide array of price points. There is another major shopping corridor on the north side of the River Liffey, in and around Henry Street.

Bookstores: Hodges Figgis, 56-58 Dawson Street, have textbooks available on the top floor; Easons, 40 Lower O'Connell Street, is a large chain bookstore. **Stationery:** Easons on Nassau Street and Tiger in Stephen's Green Shopping Centre stock a wide selection of paper goods and stationery. **Pharmacies:** Lombard Pharmacy on Pearse Street offers a 15% discount for students, Boots and Hickey's Pharmacies on Grafton Street, Prices Medical Hall on Clare Street and Trinity Pharmacy on Nassau Street.

Mobile Phones

Most international students buy a mobile phone for use in Ireland, with the most popular option being the "prepay" phone, also known as "top up" or "pay as you go". Instead of getting a monthly bill, you top up your credit as needed.

With the pre-pay option, you buy a phone and get a certain amount of free credit with it. Once your credit has run out, you can top up your credit a number of ways, including through an ATM, buying it in a newsagent or supermarket, or online.

There are three major phone service providers:

- Vodafone: www.vodafone.ie
- Eir: www.eir.ie/mobile
- 3: www.three.ie

All of the major mobile providers have retail locations on Grafton Street, just south of Trinity's main gates. Look for mobile phones with Skype capability and other features to allow for inexpensive international calls and texts. It is also possible to obtain an Irish SIM card for use in your existing mobile phone, but you should check with your current provider for details.

If you are phoning a landline in Dublin from your mobile, you should put 01 (Dublin's area code) before the telephone number. If you are phoning a landline elsewhere in Ireland from your mobile, there will be a different area code for each county. The international dialling code for Ireland is +353.

Living in Dublin

Student Travelcard

For discounted travel within Ireland, you will need to get a Student Travelcard, also known as a Student Leap Card, the National Student Travel and Discount Card. This is the only card accepted by Irish Rail, Dublin Bus, Bus Eireann and LUAS (tram) for student fares. It is also a discount card for hundreds of goods and services nationwide. The Student Travelcard is accepted as authentic proof of student status, allowing you to book a student flight to anywhere in the world.

The application form will be available in the Students' Union in House 6. Once you have your Trinity ID card, you can get a Student Travelcard for €10. Further information can be found at: www.studentleapcard.ie

Public Transport in Dublin

Leap Card

The Leap Card is a reusable plastic smartcard that can be used instead of paper tickets to pay for transport in Dublin. A Leap Card offers the flexibility to jump on Dublin Bus, Luas, DART and commuter rail services around Dublin when it suits you without having to buy a specific ticket in advance. You can top up your leap card in most newsagents, and at Dart and Luas stations. For further information on the Leap Card and where to get one please see: www.leapcard.ie

Dublin Bus

Dublin has an extensive bus route network. Please note that if you don't have a leapcard or rambler ticket, you must have exact change, as the bus driver will not give change back but will give back a receipt. You can reclaim your change at a later stage by handing in your receipts to the Dublin Bus Head Office in O'Connell Street. Students can buy 'rambler' tickets from the Students' Union (SU) shop that allows you to buy a ticket in advance for a set amount of days.

For further information on routes and timetables please see: www.dublinbus.ie

Read our Global Room Ambassador's Blog here: tcdglobalroom.wordpress.com

Nitelink

Dublin Bus operates a night service called Nitelink which runs from the city centre to the suburbs. The Nitelink buses are a cheap and safe alternative to taxis. For further information on routes and timetables please see: www.dublinbus.ie/en/your-journey1/timetables/nitelink-services

DART

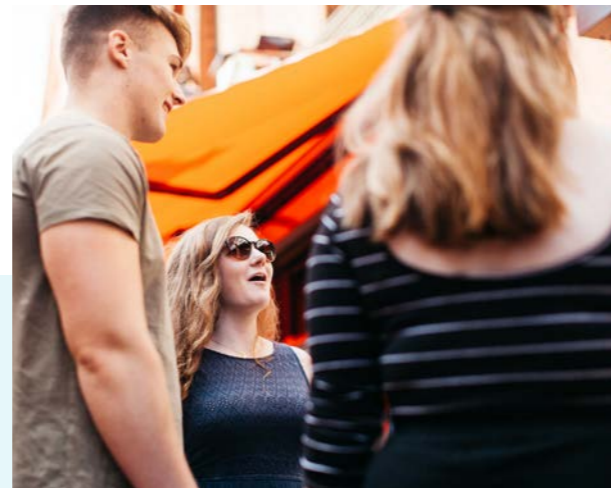
The DART train runs along the coast from Howth and Malahide in the north to Greystones in the south. The main DART stations close to Trinity are Tara Street Station and Pearse Station. For timetables please see: www.irishrail.ie

Luas

The Luas service has two tramlines between the city centre and the suburbs. The Green Line connects Sandyford to St. Stephen's Green, passing through Stillorgan, Dundrum, Milltown and Ranelagh. The Red Line connects Tallaght to The Point and Saggart to Connolly passing through Rialto, Smithfield and Abbey Street. The Green Line runs from Broombridge to Brides Glen passing through Trinity and Dawson Street. For details, see: www.luas.ie

DublinBikes

Dublin has a bike-sharing scheme, allowing you to collect a bike from any DublinBikes stand and return it to any other stand. They offer annual memberships at very low cost. More information is available here: www.dublinbikes.ie



Nationwide Public Transport

Iarnrod Eireann (Irish Rail)

Irish Rail operates train services to Irish cities from two train stations in Dublin: Heuston Station and Connolly Station, both of which are located in the city centre. For timetables please see: www.irishrail.ie

Bus Eireann (Irish Bus)

Bus Eireann has a nationwide network connecting all major Irish cities and also provides linking services from major cities to smaller towns or villages. Buses leave and arrive in Dublin at Busaras (Central Bus Station), which is close to Connolly Station. For further information please see: www.buseireann.ie

Bus Tours

The main tourist office in Dublin can provide information about coach tour providers in Ireland. The tourist office is located on Suffolk Street. Or visit: www.visitdublin.com

Smoking in Ireland

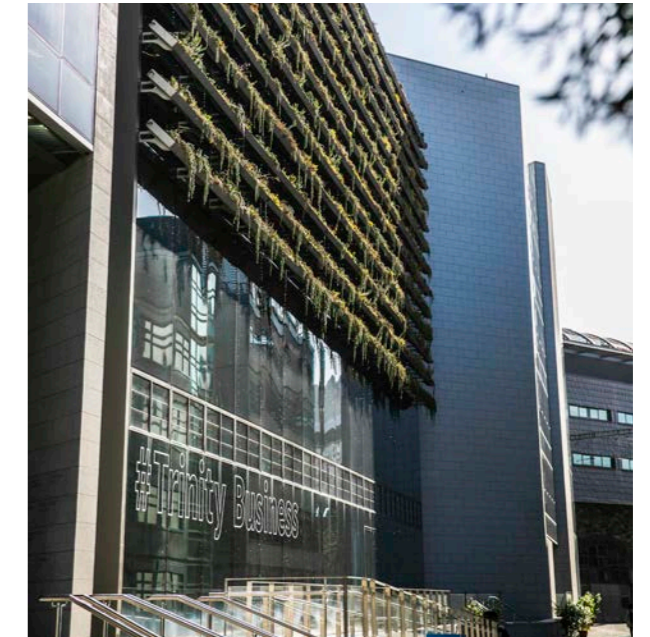
Smoking is banned in all workplaces throughout Ireland, including offices, pubs, bars, restaurants and public transport.

Electricity Voltage

Students who wish to bring electrical appliances with them should note that the voltage in Ireland is 220v. You will also need an adaptor, as the sockets in Ireland have three rectangular holes. Irish electric sockets are the same as in the United Kingdom.

Irish Weather

The Irish Climate is temperate and mild. Temperatures rarely drop below 0°C or rise higher than 24°C. The rain is most often not torrential, but light to medium showers. For clothing, make sure you have a good waterproof and windproof jacket and warm clothing for the winter months. However, there are excellent shopping facilities in and around Dublin and all items can be purchased here as well.



Useful Links

Postal Service: www.anpost.com

Electricity Supply Board: www.esb.ie

Gas Supply Board: www.bordgaisenergy.ie

Broadband and Cable Suppliers: www.eir.ie or www.virginmedia.ie

Ireland's National Police Service: www.garda.ie

You should call 999 or 112 in the case of an emergency which requires an immediate Garda response.

Emergencies include:

- A danger to life
- Risk of serious injury
- Crime in progress or about to happen
- Offender still at scene or has just left

In a non-emergency situation, you should ring your nearest Garda station if you need assistance. The nearest Garda station to Trinity College is on Pearse Street. Their phone number is +353 (01) 666 9000. The nearest Garda Station to Marino is Clontarf Garda Station, their phone number is +353 (01) 6664800



Trinity College Dublin
Coláiste na Tríonóide, Baile Átha Cliath
The University of Dublin



Contact Details

If you have any questions about studying at Trinity, please get in touch with us.

The IFP team is dedicated to helping international students and we would be delighted to answer your questions.

Please contact us at:

International Foundation Programme
Trinity Global,
East Theatre,
Trinity College Dublin,
Dublin 2, Ireland.

Tel: +353 (0) 1 896 4906

Email: IFP@tcd.ie

www.tcd.ie/study/international/foundation-programme

Join the Trinity Community



[Instagram](#)
[tcdglobal](#)



[Twitter](#)
[@tcdglobal](#)



[Linkedin](#)
[tcdglobal](#)

China



space.bilibili.com/695604784



[Facebook](#)
[/tcdglobal](#)



[Student Blog](#)
[tcdglobalroom.wordpress.com](#)

Trinity College Dublin, the University of Dublin has sought to ensure that the information given in this brochure either in print or online is correct at the time of publication but does not guarantee its accuracy and furthermore Trinity does not accept any liability for omissions, errors or changes in its content.

While Trinity aims to provide the courses, modules and facilities described in this brochure, it does not represent a binding commitment to provide the courses, modules and

facilities described within. Trinity reserves the right, at any time and without notice, to add, remove or alter content of the brochure. Nothing in this brochure should be construed as an offer to attend Trinity. Any offer made by Trinity will be subject to the University's admissions policy and will be made clear to the applicant upon receiving an offer. Neither this brochure or any other information on the Trinity website nor any Faculty or School website create a contract or other legally binding relationship between Trinity and any third party.

GR-08-BRH-IFPWG-06-23

