



Trinity College Dublin
Coláiste na Tríonóide, Baile Átha Cliath
The University of Dublin

Welcome to Conflict Resolution and Reconciliation

School of Religion, Theology, and Peace Studies

Wi-Fi:

ISE Guest

Password: Welcome123

EH Guest

Password: internetaccess

Recap of today...

Welcome and introductions

Practical information

Visit to library

Course content session

LUNCH

Tour of Queen's Quarter finishing at Queen's Sport

Professional Staff at the School of Religion, Theology, and Peace Studies



Miss Romana Ashraf

Marketing & Communications
Officer, School of Religion

✉ ashrafr@tcd.ie

☎ +3531896 4779



Ms. Caroline Clarke

Senior Executive Officer, School
of Religion

✉ cclarke4@tcd.ie

👤 [Full Profile](#)



**Ms. Amanda Dos Santos
Antunes**

Postgraduate Coordinator,
School of Religion School Office

✉ antunesa@tcd.ie



Mr. Martin Humphreys

School Manager, School of
Religion

✉ MARTIN.HUMPHREYS@tcd.ie

☎ +3531896 4778

👤 [Full Profile](#)



Ms. Helen Mc Mahon

Administrative Officer, Loyola
Institute

✉ mcmahohe@tcd.ie

👤 [Full Profile](#)

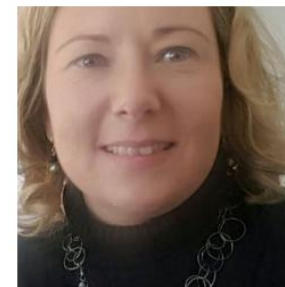


Ms. Brid O'Brien

Assistant Library Part-time,
School of Religion

✉ obrienb7@tcd.ie

👤 [Full Profile](#)



Ms. Dominique Plant

Executive Officer, School of
Religion

✉ plantd@tcd.ie

👤 [Full Profile](#)

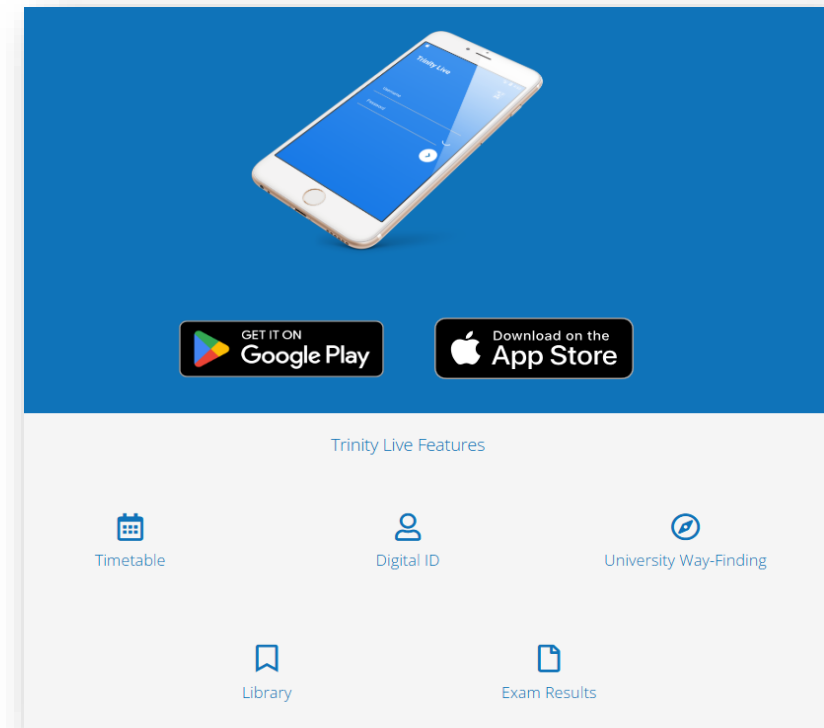
Getting set up

- Collect your building access card from the office
Photos tomorrow after class
- Your modules will be on Blackboard by end of the week at mymodule.tcd.ie
Use the text box on the module enrolment form to note any modules you wish to audit
- Find the CRR MPhil Handbook [here](#)
It will be online for reference throughout the year
- Get your student ID
Available as a card and in the Trinity Live app
- Check your student email regularly
It will be used for all course communications



How to get your TCard

- You can find instructions here on getting your TCard, including uploading your photo.
- Let us know if you would like your card posted to the CRR office.
- Your student ID is also available in the Trinity Live app.



Student Discount Cards: ISIC card. And, available from Translink: 24+ Rail Travel Card or Ylink Smart Card (up to 23 yrs) - get cheaper tickets to Dublin!

Student Support Services

POSTGRADUATE ADVISORY SERVICE

Confidential advice on **ANY** aspect of student life: academic, personal, stress-related, financial, help with university regulations, not sure what service to contact....

DISABILITY SERVICE

Register at the start of term for confidential support tailored to your needs


COUNSELLING

Book a **SNAP** Session:
Support & Needs-
Assessment Planning
Session

Check out online wellbeing
programmes

Full list: <https://www.tcd.ie/students/supports-services/>. See also **Belfast Orientation Pack** available [here](#).

Self Service Portal - Ask.TCD.ie



Trinity College Dublin
Coláiste na Tríonóide, Baile Átha Cliath
The University of Dublin


HomeLog an Academic Registry EnquiryLog a disAbility Service EnquiryStudent FormsLogin

!


All current students and staff must log in using your Trinity username and password to access the full range of services and forms.

Welcome to AskTCD


What are you looking for?




Log an Academic Registry Enquiry
Click here to raise a new Academic Registry Enquiry.



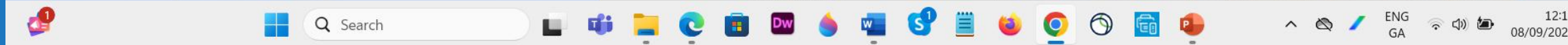
Log a disAbility Service Enquiry
Click here to raise a new disAbility Service Enquiry.



Student Forms
Raise a request from a list of student forms.



Frequently Asked Questions
View our frequently asked questions and help documentation.



Trinity College Dublin, The University of Dublin

7

Meet Trinity student support officers
Via Zoom FRIDAY 19TH SEPT @10am



POSTGRADUATE ADVISORY SERVICE
Nonie Gaynor



STUDENT COUNSELLING
Chuck Rashleigh

Look out for a link in your inbox soon!

Student representation

- A class rep will be elected for each MPhil course in the School, organised by the Students Union.
- The CRR class rep attends our local informal staff meetings to bring any student matters to our attention.
- A postgraduate taught rep is elected to represent all MPhil students at the School Executive and other committees.

Data protection



- Trinity College Dublin uses personal data relating to students for a variety of purposes.
- Find out how the University complies with the law and how your personal data is obtained, used, and securely stored.
- Data Protection Policy and Resources
- When sharing your data with external parties we ask for your consent.

Use of Facilities at Queen's University (QUB)

- ✓ Sports
- ✓ Library
- ✓ Clubs & Societies run by Students Union



Why join Queen's Sport?



- Trinity Sport covers the cost of your membership.
- Look after your wellbeing throughout the year, join clubs and classes, make the most of the fantastic facilities.
- Collect your membership card after today's tour!

Queen's library

- Apply for Associate Membership:
<https://libguides.qub.ac.uk/associatemembership>
- You will need:
 - * To be a registered student
 - * Photographic ID
 - * Proof of address in Belfast such as lease, rental agreement or bill
- Once you have paid the membership contact Martin Humphreys: mhumphre@tcd.ie who will generate a link for you to access Flowforma, the College expenses platform.
- Our librarian will assist you with any questions.

WHY JOIN?

- * *Ample study space*
- * *Long opening hours*
- * *State of the art facilities*



Clubs & Societies @ QUB Students Union

- The new Students Union building, One Elmwood, is a great space to have a coffee and chill out. Behind it is performance venue, Mandela Hall.
- Hiking in the Mournes, music, sports... whatever you are into you can join most clubs and societies run by Queen's Students Union.
- Freshers Fair - Tues 16th (general clubs) & Wed 17th (sports clubs) 11.30 – 3.30, Mandela Hall.



Please note: Advice and guidance services in this building are for Queen's students! Please contact your own Trinity Student Support Services who are there for you should you need support during your studies.

International student information

- Did you get an entry stamp in your passport on arrival? Please bring your passport to the office for copying.

UK Visas

Good to know...

- Update us if your contact details change during the year.
- Sign the attendance register in the CRR office weekly in term time.
- You can work up to 20 hours a week in term time and full-time during holidays (study week each term and the Christmas break) and after course completion. You can't work full-time over the summer as writing your dissertation is considered as full-time study.
- You will need a National Insurance number to get a job. To apply call the Helpline on **0845 915 7006**. If you are on a student visa you can't be self-employed but you can work as an employee.

Need an Irish visa to go 'down south'?

Some nationalities will need a Short Stay C Tourist visa to visit the Republic of Ireland.

As part of the application, you will need to send off your passport, so consider your travel plans.

The application is online and can take several weeks.

The Dublin field trip is 27 March 2026, so applying in January would work well.



Healthcare



- It is advisable to register at your local GP (doctor's) practice in case you need medical attention during the year. Your student visa entitles you to free use of these services.
- See healthcare PDF on the [Students Studying in Belfast](#) page for list of GPs.
- This is also where to find details of emergency services and private clinics.

Opening a bank account



- App-based banks are popular with international students. For example: Monzo, Revolut, Paypal, Starling, Wyse.
- Want to open an account at a physical bank? You will need to be a registered student, have proof of an address in Northern Ireland, and a supporting letter from the CRR office.
- UK and international banks tend to offer a better experience to international students than local banks. For example, you could try Nationwide, Santander, or HSBC.

CRR Office

Opening Hours

The CRR office is open 9am – 1pm Tuesday, Wednesday and Thursday.

Caroline is also available Mon and Fri 9am – 1pm by email or Zoom.

- Let us know if you have any problems or concerns (early) - we can help you!
- For any queries about a specific module, contact the module coordinator.



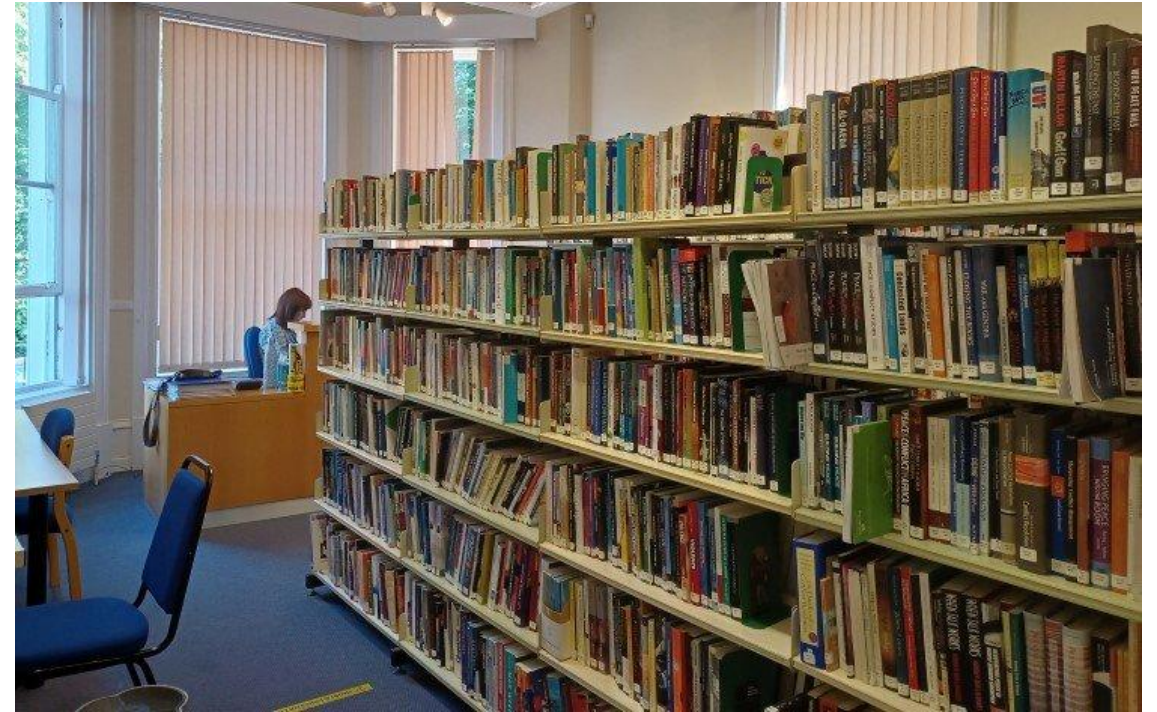
Library

Opening Hours

Tuesday & Thursday 9am – 4pm.

Bríd is also available for library advice and support online Wed 9am - 5pm.

Contact srlibblfst@tcd.ie.



**See your Library Guide for
more information**

WELCOME TO OUR SCHOOL!

ANY QUESTIONS?