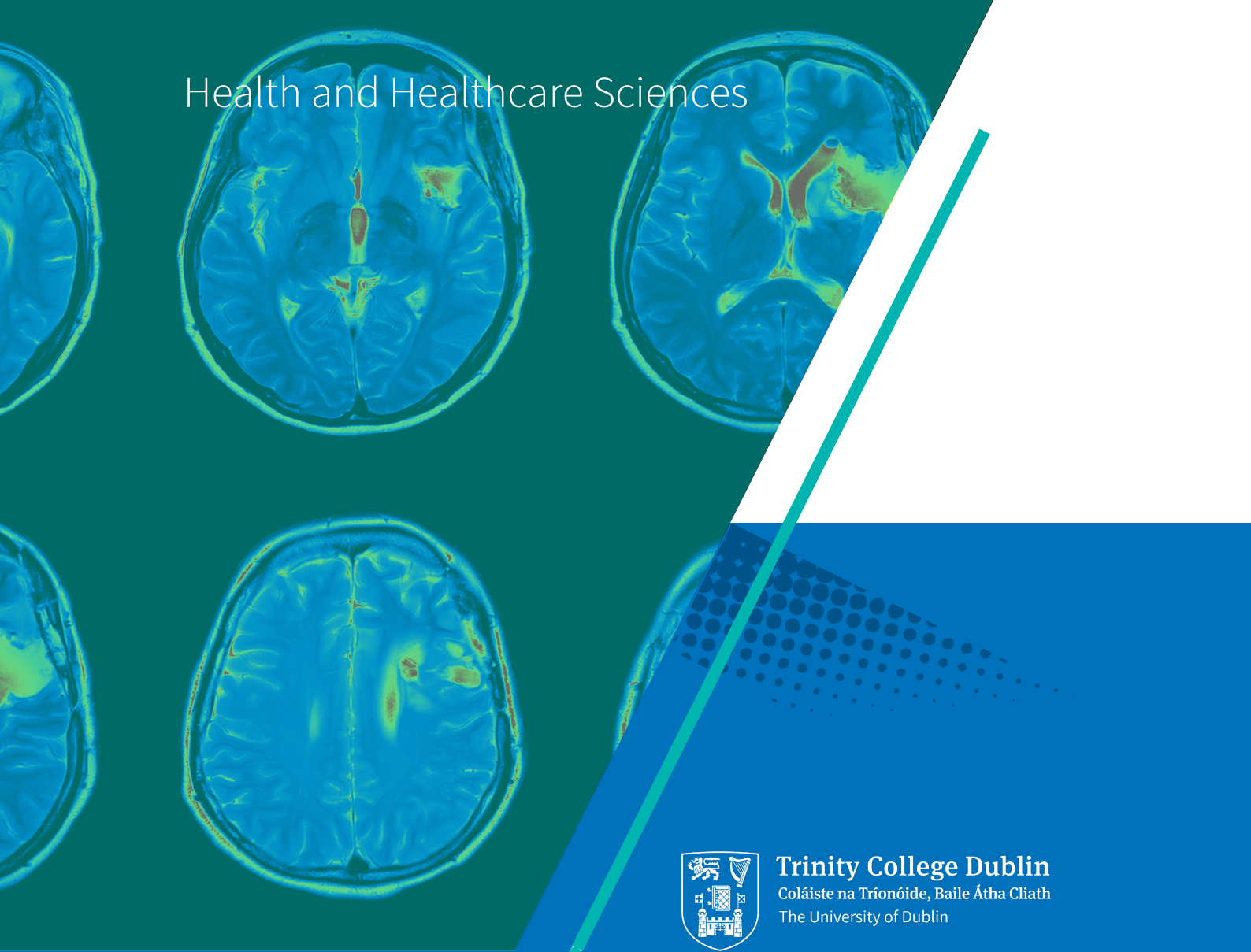


Health and Healthcare Sciences



Trinity College Dublin
Coláiste na Tríonóide, Baile Átha Cliath
The University of Dublin

School of Medicine

MSc. Applied Clinical Neuropsychology



Vision

Excellence

Compassion



MSc. Applied Clinical Neuropsychology

Course Structure

Full time (1 year) MSc.

Course Director

Professor Niall Pender

Course Email

NEUROPSYCHOLOGY@tcd.ie

Course Places

12

Overview

Neuropsychology is a specialism within psychology which explores the relationship between the human brain and behaviour.

Designed for psychology graduates, this new M.Sc. in Applied Clinical Neuropsychology is the first of its kind in Ireland.

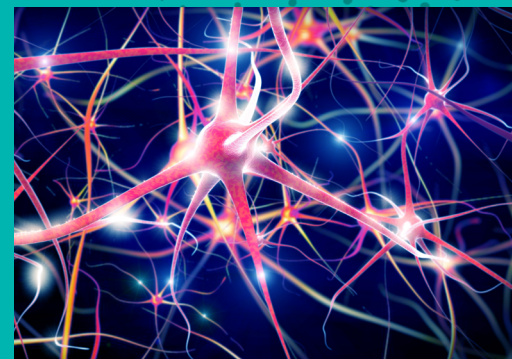
The course includes 11 compulsory modules (60 ECTS) and a research project (30 ECTS) leading to an MSc (90 ECTS).

Students will explore the clinical

presentations and neuropsychological profiles of a broad range of neurological conditions, such as stroke and epilepsy, as well as neurodegenerative conditions such as motor neuron disease, multiple sclerosis and Alzheimer's disease.

Students will join a vibrant community of academics and clinicians at the Academic Unit of Neurology, School of Medicine, and acquire a rich, research-led learning experience, from national and international experts in Neuropsychology, Neurology and Neuroscience.

<https://www.tcd.ie/medicine/neuropsych/>



Key Features

- Students will study the cognitive, behavioural and emotional consequences of neurological, neurodegenerative and neuropsychiatric conditions.
- Students will be offered optional “**clinical shadowing visits**” in neuropsychology and neurology clinics to enrich their learning experience.
- Students will review key research methodologies used in the assessment of brain-behaviour relationships.
- Students will explore key concepts in neurorehabilitation and relevant psychological therapies employed in the clinical care and management of these complex neurological conditions.

Preferred Applicants Experience

- Applicants will be required to hold at least a minimum of an upper second-class honours degree (2.1) in psychology from a recognised university course, which confers eligibility for graduate registration with the Psychological Society of Ireland or equivalent professional body in the case of overseas applicants.

Career Possibilities

- Approximately 800,000 people are living with a neurological condition in Ireland. This new MSc has been designed to equip psychology graduates with the underpinning knowledge and skills desired for assistant/research psychology posts, or for those who wish to pursue clinical/educational/counselling psychology training or entry to a PhD research programme.