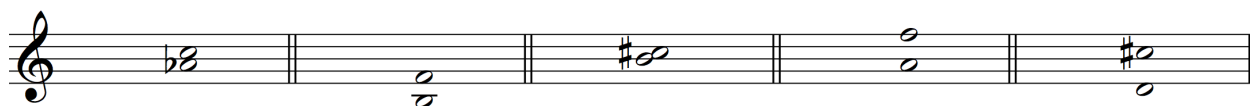


Trinity College Dublin School of Education  
in association with TU Dublin Conservatoire

Bachelor in Music Education Degree  
ENTRANCE EXAMINATION PAPER 2021

Time allowed: 2 hours  
ALL QUESTIONS TO BE ANSWERED

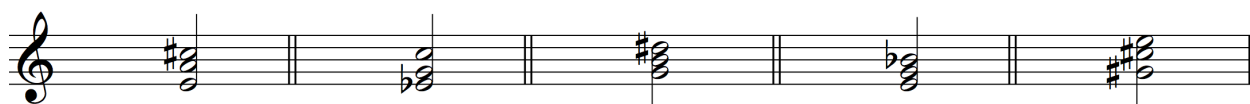
1. Identify the intervals below.



A \_\_\_\_\_ B \_\_\_\_\_ C \_\_\_\_\_ D \_\_\_\_\_ E \_\_\_\_\_

(10 marks)

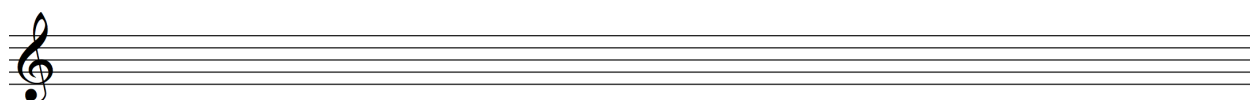
2. Identify the following triads as major, minor, diminished or augmented, and state what position is used (root, first inversion, second inversion).



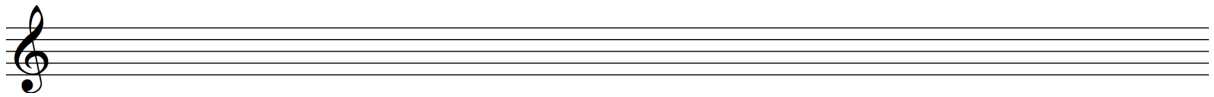
A \_\_\_\_\_ B \_\_\_\_\_ C \_\_\_\_\_ D \_\_\_\_\_ E \_\_\_\_\_  
Position: \_\_\_\_\_  
\_\_\_\_\_

(10 marks)

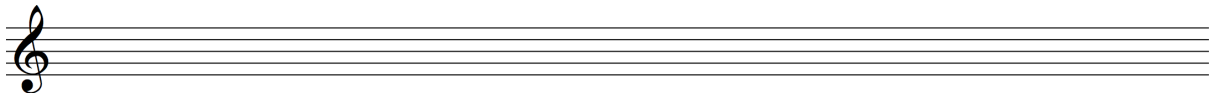
3. Write the following scales. (a) B major, ascending only, without key signature.



(b) D minor, melodic form, ascending and descending without key signature.



(c) G minor, harmonic form, ascending only with key signature.



(9 marks)

4. Add a bass part to the given melodic line. Include some auxiliary and/or passing notes.



(16 marks)

5. Add bass notes to the following extract and indicate the chords on the spaces above the top line.



(20 marks)

6. Add a Soprano line to the given bass part. Include some auxiliary and or passing notes



(20 marks)

7. Complete the following to create a melody of either 12 or 16 bars in length. You may include a modulation if you wish. Add a tempo mark, phrasing and expression.

The image shows a musical exercise on a single staff in treble clef, key of D major (one sharp), and 4/4 time. The first four bars are pre-composed:

- Bar 1: Quarter note D4, eighth notes E4-F4, quarter note G4.
- Bar 2: Quarter note A4, quarter note B4, half note C5.
- Bar 3: Quarter notes D5, E5, quarter notes F5, G5.
- Bar 4: Half note A5, quarter note B5, quarter note C6.

Below the first staff are three empty staves, each with a treble clef and a sharp sign for the key signature, intended for the student to complete the melody.

(15 marks)