

Intern Handbook

Trinity Inclusive Internship
Programme - Summer 2024

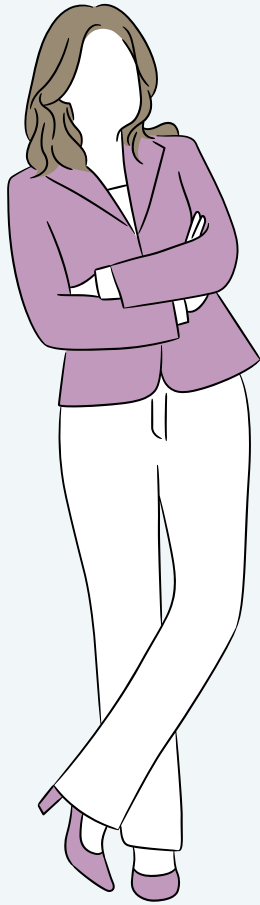


Page of Contents

1	<i>Welcome Message</i>
2	<i>Internship Overview</i>
3	<i>Internship Aims</i>
4	<i>Internship Supports</i>
5	<i>What do employers learn?</i>
6	<i>Internship Timeline & Intern Responsibility</i>
7	<i>FAQ</i>
8	<i>Workplace Accommodation Passport</i>
9	<i>Contact Us</i>



Welcome Message



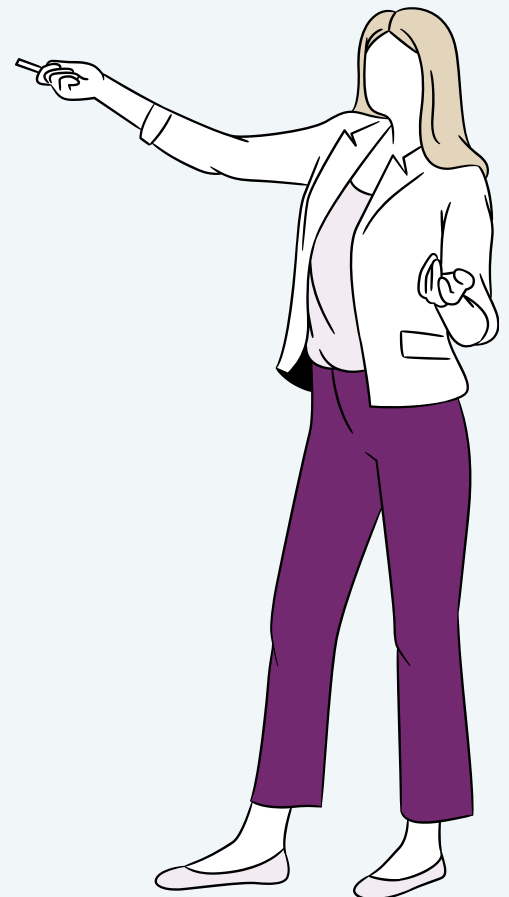
Eithne Coleman

SENIOR
OCCUPATIONAL
THERAPIST & TEAM
LEAD

We are so happy to have you here as our wonderful interns for this summer - you are so welcome!

The Inclusive Internship Programme is part of a wider initiative within the disAbility Hub, the Community Engagement Project, guiding Trinity in its partnership and engagements with disabled people and the broader community. Through this project we encourage the disabled community here in TCD to immerse themselves in activities associated with student life and graduate attribute formation both within and outside of the Trinity College community.

Aimed at bridging the gap in unemployment rates among disabled individuals in Ireland, the program sheds light on the vast untapped potential within our disabled community.

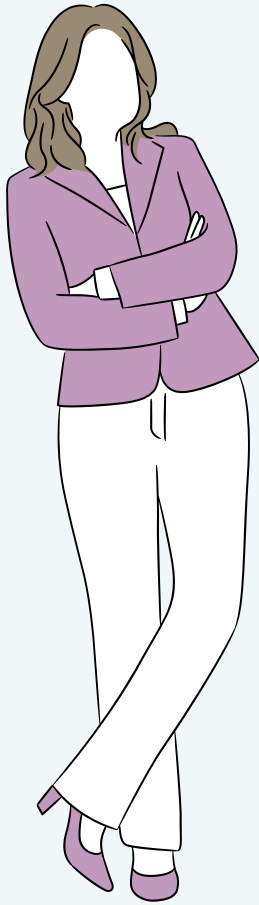


Jen O'Connor

INCLUSIVE INTERNSHIP
OFFICER

“As interns, you are a key and valued part of this process. When we consider the high unemployment rate among disabled individuals in Ireland, we know that this is not a true reflection of the capacity of our community - instead, it is an opportunity!”

Who are we?



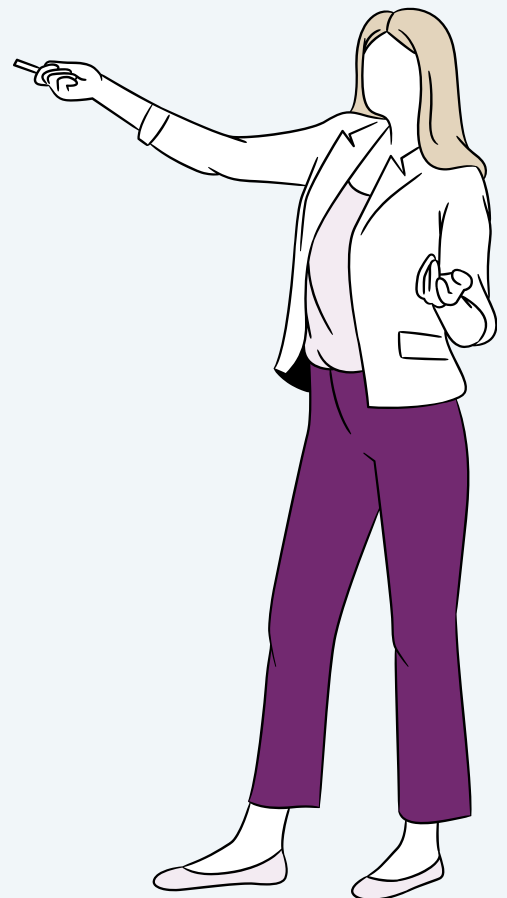
Eithne is an Occupational Therapist who joined the Trinity Disability Service in September 2020. Eithne graduated with a B.Sc. in Occupational Therapy from York St. John University in the U.K. in 2017 and has since worked in a range of healthcare settings to include complex inpatient Eating Disorders (mental health), and disability support in Higher Education.

Eithne Coleman

SENIOR
OCCUPATIONAL
THERAPIST & TEAM
LEAD



Jen is a graduate from the University of Galway with a Bachelor of Arts in Modern Languages and Creative Writing. She has since completed a Master of Science in Disability Speech and Communication Skills which highlighted her interest in narrative studies, particularly in the context of autistic adults. Her interest in neurodiversity stems from her own dual diagnosis with ADHD and autism.



Jen O'Connor

INCLUSIVE
INTERNSHIP
OFFICER

Internship Overview

Learn more about the principles that guide the Inclusive Internship Programme and informs the supports we offer.

Empowerment Providing internships that not only offer practical experience but also bolster the confidence and self-worth of disabled students.

Enhanced Employability Through focused sessions on CV building, interview dynamics, and professional networking.

Inclusive Environments dIsAbility sensitivity training sessions for staff and accessibility measures ensure a respectful and supportive workplace culture.

Networking Opportunities Connects students with industry professionals, alumni, and mentors.

Recognition Celebrating achievements through mid-program evaluations, testimonials, and certificates of completion.



Internship Aims

Employment

It is the programme's aim to provide TCD students a positive employment experience across one summer (June to August) through an internship within the Trinity College Dublin environment.

Support

Throughout the internship, interns will receive access to 1:1 employment and occupational therapy support, along with training and peer meetings.

Mentorship

Each intern will receive access to a Trinity alumni who will serve as an industry mentor, providing guidance and insight into access employment within a particular field.

Education

All interns who agree to take part in the internship will receive training around communicating in the workplace, self and conflict management and self-advocacy. Staff receive disability awareness training, inclusive language training and the environment will be assessed for physical and sensory accessibility.

What resources are available?

Interns:

- Application Guide for Interns
- Internship Guidebook
- Self-branding skills
- CV & cover letter guide

Staff:

- Internship Guidebook
- Inclusive interview practices
- Accessibility & sensory audit guidelines

Trinity disAbility Hub

Internship Supports



1 1:1 Employment Support with Jen

With Jen, you can have regular 1:1 meetings to discuss any of your concerns, accessing reasonable accommodations, and any other workplace challenges you might be facing.

3 Pre-Needs Assessment

Prior to beginning your internship, you will be offered an optional workplace assessment. Here, we can identify any additional supports you might require and benefit from and how we might communicate these.

2 Occupational Therapy with Eithne

With Eithne, you can discuss any barriers you may be facing to completing your tasks, and having a fulfilling work/life balance.

4 Peer Support

It is essential that the interns, whilst having individual experiences, have the opportunity to meet with one another and discuss the common challenges and victories presenting to everyone.

What do the employers learn?

Here at the Disability Service, we work closely with disabled students across all disciplines within Trinity, many of whom express concerns about accessing employment. In a bid to support our students further, the Inclusive Internship Programme was developed.

However, we also acknowledge that many of the barriers disabled students face when they first engage with employment are often related to a lack of knowledge by non-disabled employers about disability awareness, and reasonable accommodations. Therefore, the Inclusive Internship Programme fostered a mirrored approach to the programme; supports for interns and supports for employers before, during and after the internships.



Disability Awareness

- The importance of moving from disability awareness to disability acceptance.
- Visible and invisible disabilities.
- Challenging stereotypes and stigmas.

Reasonable Accommodations

- Entitlements of a disabled employee.
- What constitutes a reasonable accommodation.
- Implementation of accommodation.
- Sensitivity of disability disclosure.

Inclusive Language

- How importance language contributes to an inclusive environment.
- Addressing anxiety about using the 'wrong' language.
- Long term impact of hurtful, damaging language use.
- The connection between language use and self-advocacy.

Internship Timeline

Internship Timeline



Intern Responsibility

Intern Responsibilities

All accepted interns who agree to take part in the Inclusive Internship Programme are expected to be available for the entire agreed duration of the internship. Interns are additionally expected to take part in the supports offered throughout the internship and complete a workplace profile. These include: an induction programme, training, mentorship opportunities, peer meetings and guest speaker events. We believe that by fully immersing themselves within the programme, interns can gain maximum benefit.

Here you will find answers to additional questions you might have throughout the internship. However, you are always welcome to contact us to ask any questions at askds@tcd.ie.

✔ **What will happen during induction?**

The induction usually takes place the week before the beginning of the internships and runs several information sessions throughout the week. These events are both trainings and also an opportunity for you to ask any questions concerning you, and meet your fellow interns.

✔ **What do I do if I do not feel supported in my workplace?**

If you are experiencing challenges in the workplace, we suggest that you speak both with the Disability Service and your line manager to work toward a solution. We will be happy to help you throughout this process.

✔ **I am feeling overwhelmed and I don't know what to do.**

We understand that, like anyone, workplaces can be overwhelming. Additionally, we understand that unforeseen events may take place; illness, bereavement, for example. We suggest that you connect with the Disability Service and your line manager to have a constructive conversation, throughout which you will be supported.

✔ **I might find attending social gatherings difficult. What do I do?**

If you find the concept of attend regular peer meetings with your fellow interns difficult, we understand. We ask that you communicate this to the Disability Service and we will see if there is any accommodations that may be made or alternative communication methods offered.



Reasonable Accommodations

✓ The Reasonable Accommodation Profile is a living record of any agreed workplace accommodations set up between you and your Line Manager. The below acts as a template/sample of a reasonable accommodations passports to be proposed for use in future workplaces.

The purpose of the Profile is to:

- Ensure that you and your line manager have a living record of any agreed workplace accommodations.
- Used as a way of communicating Reasonable Accommodations to other staff or employers and minimises the need to renegotiate accommodations or repeat potentially difficult conversations each time you change your job, relocate or are assigned a new manager within the team.
- Provide you and your line manager with a structure to help you regularly review and discuss your workplace accommodations.

Staff Name	
Line Manager	
Staff ID (if applicable)	

Reasonable Accommodation	Date Implemented	Date Reviewed

Workplace Profile - All About Me



The workplace profile that you are required to make using our Microsoft Sway template functions as means of communication between you and your Line Manager. This is different to your reasonable accommodations. Your profile shares information about how you are outside of the internship, what you are passionate about, and if you have any information about how you work, your preferred communication etc. that you would like the office to know.

Aspects of the Workplace Profile:

- Personal information (name, pronouns, etc.)
- Connection to your role
- Preferences for socialising
- Communication preferences
- Working style preferences
- Hobbies and interests
- Skills and abilities
- How you feel speaking about your disability
- Sensory profile

Please note, the completion of a Workplace Profile is a mandatory aspect of the internship.



Contact Us

You are welcome to contact us by whatever medium suits you. We recognise that everyone’s communication preferences are likely to vary.

Email askds@tcd.ie if you would like to schedule an in-person meeting.

Description	Phone	Email
<p>Eithne Coleman</p> <p><i>SENIOR OCCUPATIONAAL THERAPIST & TEAM LEAD</i></p>	<p>087 113 3185</p>	<p>askds@tcd.ie</p>
<p>Jen O’Connor</p> <p><i>INCLUSIVE INTERNSHIP PROGRAMME OFFICER</i></p>	<p>+353 1 896 3111</p>	<p>asktcd@tcd.ie</p>