

**Dean of Graduate Studies' annual report for the  
academic year 2005/2006**

**and**

**Postgraduate Admissions data for 2006/2007**



**Professor Patrick J. Prendergast  
Dean of Graduate Studies  
For presentation to the University Council at meeting of 7<sup>th</sup> March 2007**

## Contents

|                                                                       | <b>Page</b> |
|-----------------------------------------------------------------------|-------------|
| 1. Introduction                                                       | 1           |
| 2. Graduate Studies Office (GSO)                                      | 1           |
| 3. Graduate Studies Committee (GSC)                                   | 2           |
| 4. New Course Proposals                                               | 4           |
| 5. Processing and Admissions: Postgraduate student and course numbers | 4           |
| 6. Maintenance of Academic Quality                                    | 8           |
| 7. College Awards                                                     | 10          |
| 8. Travel Grants                                                      | 11          |
| 9. Publications                                                       | 11          |
| 10. Other Reporting Items                                             | 12          |
| 11. Postgraduate Admissions Data 2006-07                              | 12          |
| 12. Research Supervision                                              | 13          |

## List of Tables and Figures

| <b>Tables</b> |                                                                                                        | <b>Page</b> |
|---------------|--------------------------------------------------------------------------------------------------------|-------------|
| Table 1       | New entrants and total registered graduate students over the past 4 years                              | 4           |
| Table 2       | Postgraduate student numbers since 1987/1988 by category                                               | 5           |
| Table 3       | Breakdown of students by gender by research, Masters and Diploma courses registered over past 3 years  | 6           |
| Table 4       | Breakdown of Postgraduate students by gender and new Faculty on Research and Taught Masters programmes | 7           |
| Table 5       | Application for awards 2003/2004 to 2005/2006                                                          | 10          |
| Table 6       | Trinity Trust travel grant awards 2005/06                                                              | 11          |

## Figures

|          |                                                                     |   |
|----------|---------------------------------------------------------------------|---|
| Figure 1 | Full-time / Part-time students                                      | 6 |
| Figure 2 | Number of Taught Masters and Postgraduate Diploma courses ('95-'06) | 8 |
| Figure 3 | Examination period for research theses                              | 9 |

## Appendices

|            |                                                             |    |
|------------|-------------------------------------------------------------|----|
| Appendix 1 | Students: Countries/Countries of origin                     | 14 |
| Appendix 2 | List of external examiners for research degrees             | 17 |
| Appendix 3 | Research and professional examinations by degree            | 30 |
| Appendix 4 | Number of research degrees by Faculty and degree            | 31 |
| Appendix 5 | List of external examiners for taught courses               | 32 |
| Appendix 6 | Postgraduate Taught Course applications and admissions data | 40 |
| Appendix 7 | Research Applications and Admissions Data                   | 48 |
| Appendix 8 | Supervision Ratios                                          |    |

## 1. Introduction

The purpose of this annual report to the University Council is threefold:

- (i) to provide the University Council, and the wider College community, with the statistical information needed to make informed policy decisions about graduate education in the College,
- (ii) to report on the work of the Graduate Studies Office, and
- (iii) to make the required statutory reports to University Council regarding examiners appointed for higher degrees.

Statistical data covers the period 2005/2006, and postgraduate admissions data covers the period October 2006 to end January 2007.

Once approved by Council, this report will be posted on the Graduate Studies Office Website at [http://www.tcd.ie/Graduate\\_Studies/](http://www.tcd.ie/Graduate_Studies/)

## 2. Graduate Studies Office

The Dean of Graduate Studies is head of the Graduate Studies Office. The Dean is supported by two Administrative Officers, one Senior Executive Officer and six Executive Officers.

The Dean of Graduate Studies has statutory responsibility for admitting all postgraduate students and administering the regulations regarding their academic progression and examination. The Graduate Studies Office (GSO) acts as the central coordinating office for postgraduate affairs in College.

Responsibilities of the Dean of Graduate Studies and the Graduate Studies Office include:

### *Development of Graduate Education Policy*

This is achieved by

- (a) Convening the Graduate Studies Committee consisting of all the Directors of Teaching and Learning (Postgraduate) in the Schools, Keeper of Readers' Services, the MIS manager, President and Vice President of the Graduate Students' Union, and bringing before it all matters of import regarding graduate education including changes to the regulations concerning higher degrees (see *University Calendar Part II* page 9 for the Terms of Reference of the Graduate Studies Committee).
- (b) Attending national and international fora (e.g. Irish Universities Association, European Universities Association, Coimbra Group Taskforce meetings) and using this information to develop discussion papers on matters of importance for developments in graduate education.
- (c) Representing the graduate education function on College committees and compiling and interpreting information regarding graduate education for such committees.
- (d) Updating and revising procedures of admission, progression and examination, and making the required changes to the *University Calendar Part II*.

### *Administration of postgraduate courses*

The University and College have some 149 separate courses of study at postgraduate level. These are administered in a varying degree of contribution from GSO and Schools. Administrative tasks include

- (a) Providing specialist advice and assistance to Schools in the development of new postgraduate courses. Specifically the GSO staff ensure that proposed admissions criteria adhere to the College's regulations, that the credit values apportioned to modules are correct, that proposed entries for

the *University Calendar Part II* and the prospectus are correct, and that the documentation to be presented to the Graduate Studies Committee and the University Council is complete,

- (b) Liaising with the College community to produce the annual Postgraduate Prospectus,
- (c) Dealing with initial enquiries about postgraduate programmes both in the areas of research and taught (Masters and Diploma) courses,
- (d) Monitoring the quality of the College's taught postgraduate courses by reviewing and distributing all taught postgraduate courses examiner's reports and ensuring recommendations are acted on,
- (e) Together with the Quality Office, reviewing taught postgraduate programmes as part of the School review process. Initiating occasional course reviews outside the normal process when required.
- (f) Promoting the College's postgraduate programmes through advertisement and attendance at national career exhibitions and fairs.

*Administration of postgraduate awards and bursaries made at College level*

- (a) Allocating postgraduate research awards to Faculties,
- (b) Administering travel grants,
- (c) Administering the Student Assistance Fund and the Emergency Hardship Fund.

*Provision of services for graduate students*

- (a) Setting and monitoring the quality of graduate admissions to the College. Although all students are admitted to the University by the Dean of Graduate Studies, two modes of administration are operated
  - a. The Graduate Studies Office receives and processes applications for admission, liaising with the School's Director of Teaching and Learning (Postgraduate) for research students or the Course Director for admission to taught programmes, or
  - b. Setting quality procedures for local administration of admissions where Schools wish to have this. Prospective students apply directly to the Schools and recommendations for admission are sent to the Graduate Studies Office for processing, the School dealing with unsuccessful applicants locally.
- (b) Setting regulations for student academic progress and monitoring these regulations, e.g. transfer from the Masters to PhD register, time on the research register.
- (c) Attending to postgraduate student 'cases' either in correspondence with the student, the course director, the supervisor, or the Director of Teaching and Learning (Postgraduate),
- (d) Processing research thesis submissions and appointment of external examiners for taught courses and research degrees,
- (e) Receiving and reviewing examinations. Distributing examiners reports. Convening of appeals,
- (f) Preparing documentation for the Sub-committee of Board and Council for the approval of higher degrees.

### **3. Graduate Studies Committee**

The Graduate Studies Committee normally meets monthly during statutory term. Its sub-committee, the Appeals Committee for Graduate Students, meets only when required. The composition of the Graduate Studies Committee is listed in the *University Calendar, Part II*.

In 2005/06 there were seven meetings of the GSC. Minutes of the GSC (GSC M) are available on the Trinity College Local Home Page<sup>1</sup>.

During 2006/07 the Committee discussed the following issues of interest to the general postgraduate community in College:

- *Functions of the Directors of Teaching and Learning (Postgraduate) (20/10/05/189.3)*  
The Committee implemented the procedures to give effect to the Board-approved document on the function of the Directors of Teaching and Learning (Postgraduate).
- *Strategic planning in the context of graduate education (17/11/05/190.2)*  
Strategic planning is a requirement under the terms of the 1997 Education Act. The Graduate Studies Committee formed a Graduate Education Strategy Group (chaired by the Dean of Graduate Studies) to contribute to the strategic planning process. This led to the first detailed statement of strategy for Graduate Education in College.
- *Graduate programmes and integrated PhDs in Trinity College (15/12/05/191.3)*  
This was discussed and a Discussion paper agreed and presented to the University Council. The Dean noted that both the Strategic Innovation Fund and the National Research Plan would almost certainly have specific funding for the new type PhD incorporating taught and generic courses so that the graduates would acquire a broader skills base to be more employable in the "knowledge" economy.
- *Review of M.Sc/PhD transfer process (17/11/05/190.6) (30/03/06/193.4)*  
A Graduate Studies Committee working party was set up to review the Masters to the PhD transfer process College-wide and following its recommendations the PhD transfer formula has been significantly revised and incorporated into the *University Calendar Part II*. (p. 34).
- *E-theses (23/02/06/192.6 and 8/06/06/195.4)*  
Trinity College Library is currently developing an electronic thesis repository as part of a larger prototype digital research archive which is being integrated with the Research Support System in order to allow research students to maintain their own profiles linked to their supervisors' research profiles in the system. The Graduate Studies Committee overviewed the system and contributed to its testing by depositing retrospective e-theses. The Committee agreed to test depositing through a 'live' thesis submission system, which would commence at an earlier stage in the process, and which would allow the deposit of e-theses as early in the process as possible.
- *Procedures for students presenting for a second Masters degree (8/06/06/195.3)*  
The University Council will be aware of this issue, which has been identified and discussed by the Graduate Studies Committee on foot of which a proposal will shortly be brought to Council by the Registrar.

The Postgraduate Student Appeals Committee met once during the academic year 2005-06.

---

<sup>1</sup> [http://www.tcd.ie/Graduate\\_Studies/staff/committee/committeepapers/index.php](http://www.tcd.ie/Graduate_Studies/staff/committee/committeepapers/index.php)

#### 4. New Course Proposals

In 2005/06 the Graduate Studies Committee discussed and recommended the following new course proposals, which were subsequently approved by the University Council.

- M.Sc. in Applied Psychology
- M.Phil in Comparative Literature
- M.Sc. in Biodiversity and Conservation
- M.Sc. in Neuroscience
- M.Sc./P.Grad.Dip. in Palliative Care
- M.Sc./P.Grad.Dip. in Chemical and Biological Techniques
- Master in Education – restructured M.Ed/P.Grad.Dip.
- Postgraduate Diploma in Cognitive Psychotherapy

#### 5. Processing and Admission: Postgraduate Student and Course Numbers

As the first point of contact for all postgraduate students, the GSO advises all incoming students with regard to registration, financial information on fee payment, and immigration requirements (for non-EU students). The GSO organises the Orientation Meeting for new postgraduate students where they are advised on the broad range of services available to them in College.

There have been approximately 20,000 enquiries per year over the past three years, either directly in the office, over the phone or by email. In 2006/7 to date, the Graduate Studies Office processed 4,124 applications for postgraduate admission, and approximately another 800 applications were submitted directly to Schools. There has been a consistent increase in the number of postgraduate students registered over the last four years (Table 1). In 2004/05 28% of all students were graduate students whereas in 2005/06 graduate students comprised 29.5% of the total student body. Therefore almost one in three students in Trinity is now a postgraduate student.

*Table 1: New entrants and total registered graduate students over the last 4 years*

|                                       | 2002/03 | 2003/04 | 2004/05 | 2005/06      |
|---------------------------------------|---------|---------|---------|--------------|
| New Entrants                          | 2,432   | 2,269   | 2,363   | <b>2,411</b> |
| Total number registered for that year | 4,193   | 4,207   | 4,298   | <b>4,531</b> |
| Increase on previous year             | 374     | 14      | 91      | <b>233</b>   |
| % increase on previous year           | 9.7%    | .33%    | 2.1%    | <b>5.4%</b>  |

The breakdown of postgraduate student numbers in the three major classes – research, taught and postgraduate diplomas – are presented in Table 2 overleaf.

Table 2: Postgraduate student numbers since 1987/1988 by category

|         | Research |     |       | Taught Masters |     |       | PG Diploma |      |       | Total PGs |      |       |
|---------|----------|-----|-------|----------------|-----|-------|------------|------|-------|-----------|------|-------|
|         | f/t      | p/t | total | f/t            | p/t | total | f/t        | p/t  | total | f/t       | p/t  | total |
| 1987/88 | 645      | 262 | 907   | 272            | 41  | 313   | 134        | 278  | 412   | 1051      | 581  | 1632  |
| 1993/94 | 988      | 156 | 1144  | 356            | 169 | 525   | 142        | 720  | 862   | 1486      | 1045 | 2531  |
| 1994/95 | 1043     | 132 | 1175  | 398            | 155 | 553   | 159        | 276  | 435   | 1600      | 563  | 2163  |
| 1995/96 | 1056     | 127 | 1183  | 393            | 195 | 588   | 139        | 330  | 469   | 1588      | 652  | 2240  |
| 1996/97 | 1069     | 137 | 1206  | 361            | 242 | 603   | 159        | 393  | 552   | 1589      | 772  | 2361  |
| 1997/98 | 1060     | 185 | 1245  | 483            | 340 | 823   | 145        | 419  | 564   | 1688      | 944  | 2632  |
| 1998/99 | 1130     | 178 | 1308  | 474            | 379 | 853   | 234        | 776  | 1010  | 1838      | 1333 | 3171  |
| 99/2000 | 1221     | 196 | 1417  | 474            | 420 | 894   | 170        | 1186 | 1356  | 1865      | 1802 | 3667  |
| 00/2001 | 1161     | 186 | 1347  | 467            | 443 | 910   | 247        | 1085 | 1332  | 1875      | 1714 | 3589  |
| 2001/02 | 1226     | 207 | 1433  | 509            | 499 | 1008  | 235        | 1143 | 1378  | 1970      | 1849 | 3819  |
| 2002/03 | 1306     | 184 | 1490  | 579            | 572 | 1151  | 517        | 1035 | 1552  | 2402      | 1791 | 4193  |
| 2003/04 | 1391     | 139 | 1530  | 607            | 704 | 1311  | 564        | 802  | 1366  | 2562      | 1645 | 4207  |
| 2004/05 | 1491     | 220 | 1711  | 673            | 706 | 1379  | 513        | 695  | 1208  | 2677      | 1621 | 4298  |
| 2005/06 | 1523     | 251 | 1774  | 744            | 707 | 1451  | 516        | 790  | 1306  | 2783      | 1748 | 4531  |

Among the salient points from Table 2 above are:

- The number of postgraduate students in all categories continues to increase.
- Research students constitute 39.1% of all postgraduate students; there has been little change in these proportions from 2004/05 when the proportion of research students was 39.8%
- Given a total student body (UG and PG) of 15,322, research students make up 11.6% of the total student body.
- Of the 2,757 students registered for taught courses in 2005/06, 1,451 (32% of all graduate students) were undertaking a Masters degree and 1306 (29%) were registered for a Diploma. The corresponding figures for 2004/05 were 1,379 (32% of all graduate students) on taught Masters and 1,208 (28.1%) registered for a Diploma.
- Part-time student numbers increased in 2005/06 with 38.6% of all postgraduate students registering for part-time study. As in 2004/05 the majority of part-time students were undertaking taught Masters courses, and the number of part-time research students increased by 14% - Fig. 1 (overleaf) shows this graphically.

Approximately 13.3% of postgraduate students came from outside Ireland (see Appendix 1 for details). In the previous year the figure was 12.4%. Postgraduate students are drawn from a total of 71 countries whereas last year postgraduates came from 75 countries outside Ireland. The number of non-EU students also increased by 35 students.



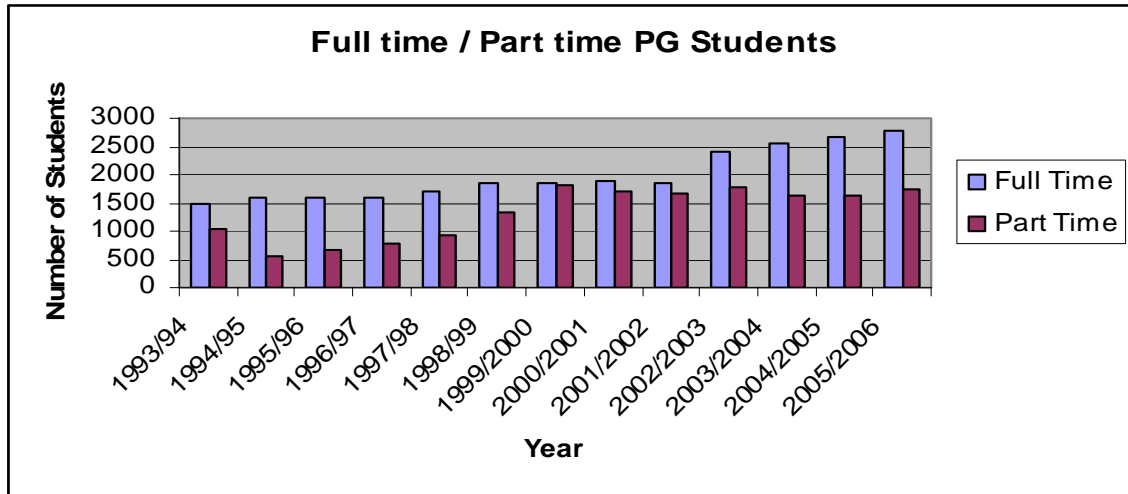


Figure 1: The proportion of full-time to part-time students fluctuates over time with the present ratio 1.6:1

Table 3 below shows the breakdown of students by gender registered on research, Masters and Diploma programmes in 2005/06. The overall male/female balance was similar to previous years with a greater number of women to men (female/male ratio of 1.5:1).

Table 3: Breakdown of students by gender by research, Masters and Diploma courses registered over past 3 years.

|                      | Male        |       |       | Female      |       |       | Total       |       |       |
|----------------------|-------------|-------|-------|-------------|-------|-------|-------------|-------|-------|
|                      | 05/06       | 04/05 | 03/04 | 05/06       | 04/05 | 03/04 | 05/06       | 04/05 | 03/04 |
| <b>Research</b>      | <b>885</b>  | 876   | 790   | <b>889</b>  | 835   | 748   | <b>1774</b> | 1711  | 1538  |
| <b>Taught Master</b> | <b>721</b>  | 569   | 543   | <b>1190</b> | 810   | 761   | <b>1911</b> | 1379  | 1304  |
| <b>Diplomas</b>      | <b>242</b>  | 456   | 372   | <b>604</b>  | 752   | 993   | <b>846</b>  | 1208  | 1365  |
| <b>Total</b>         | <b>1848</b> | 1901  | 1705  | <b>2683</b> | 2397  | 2502  | <b>4531</b> | 4298  | 4207  |
| Total Percentage     | 40.8%       | 44.3% | 40.5% | 59.2%       | 55.7% | 59.5% | 100%        | 100%  | 100%  |

Regarding the breakdown of student numbers between Faculties, data shows that in Engineering & Systems Sciences and Science, the majority of students are male. In the Health Sciences and Arts and Humanities fields the majority of students are female. (See Table 4 overleaf).

Table 4: Breakdown of postgraduate students by gender and Faculty on research and taught masters programmes

|                                | <b>Totals</b>      |         |                    |         |                  |         |                  |         |
|--------------------------------|--------------------|---------|--------------------|---------|------------------|---------|------------------|---------|
|                                | Full-time Research |         | Part-time Research |         | Full-time Taught |         | Part-time Taught |         |
|                                | 2005/06            | 2004/05 | 2005/06            | 2004/05 | 2005/06          | 2004/05 | 2005/06          | 2004/05 |
| Engineering & Systems Sciences | 292                | 288     | 39                 | 41      | 116              | 112     | 163              | 149     |
| Health Sciences                | 204                | 145     | 98                 | 86      | 76               | 65      | 284              | 269     |
| Science                        | 450                | 461     | 11                 | 12      | 24               | 31      | 0                | 23      |
| Arts (L)                       |                    | 173     |                    | 11      |                  | 95      |                  | 14      |
| Arts (H) (includes ISE)        |                    | 270     |                    | 87      |                  | 260     |                  | 69      |
| BESS                           |                    | 138     |                    | 24      |                  | 121     |                  | 159     |
| Arts & Humanities              | 316                |         | 30                 |         | 205              |         | 49               |         |
| Social & Human Sciences        | 279                |         | 70                 |         | 308              |         | 220              |         |

|                                | <b>Male</b>        |         |                    |         |                  |         |                  |         |
|--------------------------------|--------------------|---------|--------------------|---------|------------------|---------|------------------|---------|
|                                | Full-time Research |         | Part-time Research |         | Full-time Taught |         | Part-time Taught |         |
|                                | 2005/06            | 2004/05 | 2005/06            | 2004/05 | 2005/06          | 2004/05 | 2005/06          | 2004/05 |
| Engineering & Systems Sciences | 218                | 219     | 32                 | 32      | 89               | 81      | 101              | 93      |
| Health Sciences                | 70                 | 42      | 35                 | 31      | 39               | 37      | 61               | 60      |
| Science                        | 250                | 250     | 6                  | 6       | 15               | 17      | 0                | 9       |
| Arts (L)                       |                    | 62      |                    | 5       |                  | 27      |                  | 2       |
| Arts (H) (includes ISE)        |                    | 108     |                    | 37      |                  | 83      |                  | 20      |
| BESS                           |                    | 75      |                    | 11      |                  | 49      |                  | 99      |
| Arts & Humanities              | 124                |         | 14                 |         | 63               |         | 14               |         |
| Social & Human Sciences        | 124                |         | 35                 |         | 113              |         | 125              |         |

| Female                         |                    |         |                    |         |                  |         |                  |         |
|--------------------------------|--------------------|---------|--------------------|---------|------------------|---------|------------------|---------|
|                                | Full-time Research |         | Part-time Research |         | Full-time Taught |         | Part-time Taught |         |
|                                | 2005/06            | 2004/05 | 2005/06            | 2004/05 | 2005/06          | 2004/05 | 2005/06          | 2004/05 |
| Engineering & Systems Sciences | 74                 | 69      | 7                  | 9       | 27               | 31      | 62               | 56      |
| Health Sciences                | 134                | 103     | 63                 | 55      | 37               | 28      | 223              | 209     |
| Science                        | 200                | 211     | 5                  | 6       | 9                | 14      | 0                | 14      |
| Arts (L)                       |                    | 111     |                    | 6       |                  | 68      |                  | 12      |
| Arts (H) (includes ISE)        |                    | 162     |                    | 50      |                  | 177     |                  | 49      |
| BESS                           |                    | 63      |                    | 13      |                  | 72      |                  | 60      |
| Arts & Humanities              | 192                |         | 16                 |         | 142              |         | 35               |         |
| Social & Human Sciences        | 155                |         | 35                 |         | 195              |         | 95               |         |

The number of taught postgraduate courses continues to rise steadily indicating that academic developments are continuing apace. (Fig. 2 shows this graphically). Some courses offer both a Masters and a Postgraduate Diploma option which are counted separately for the purposes of this table.

The number of taught programmes has more than doubled over the past ten years. It should be noted, however, that not all taught courses currently listed are offered in any given year.

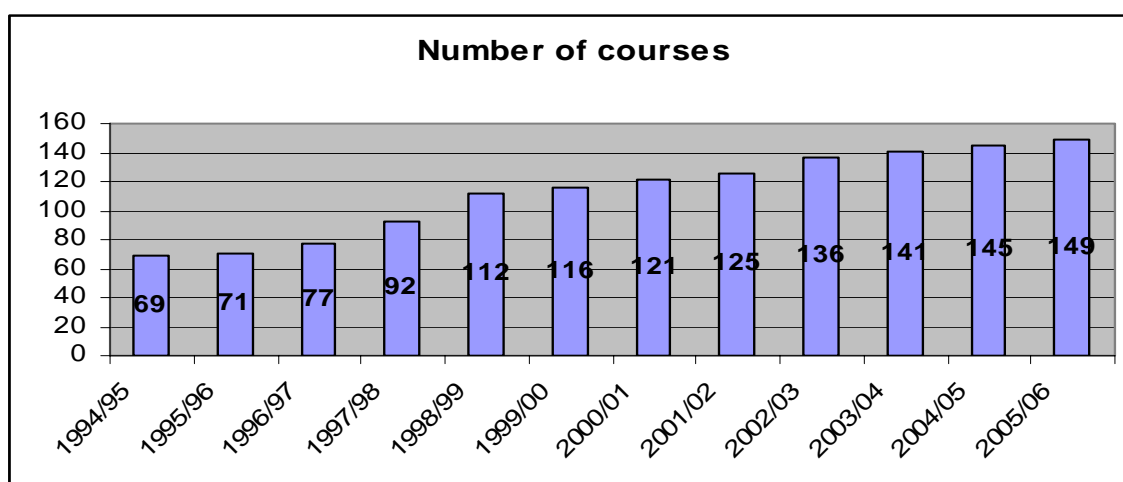


Figure 2: Number of taught Masters and Postgraduate Diploma courses ('95-'06)

## 6. Maintenance of Academic Quality

Academic standards of all postgraduate programmes are monitored and their high quality partly assured through extensive use of independent external examiners. Since the role of external examiners is radically different with respect to research degrees from that in the taught course area, they are treated separately below.

- *Research degrees*

In the academic year 2005/06, there were 308 external examiners involved in examination of 298 research theses; this is an increase of 26 relative to the number of examiners appointed in the previous year. The list of the examiners is given, for noting by Council, in Appendix 2.

The results of the examinations of research theses that took place from October 2005 to September 2006 are given in Appendix 3: data for the previous two years are given for comparison. The data shows that the number of PhD examinations in 2005/06 was 223, (184 in 2004/05, and 170 in 2003/04). Therefore the number of PhDs awarded is increasing steadily.

The decision on the vast majority of theses continues to be “minor corrections” (as shown in the Table in Appendix 3).

A statistic of considerable interest to staff and students is the time taken from a first submission of the thesis to approval by the sub-committee of Board and Council for Higher degrees. This period includes the time taken to

- (i) nominate examiners
- (ii) appoint examiners and send them the theses
- (iii) arrange a viva (if required)
- (iv) receive the examiners reports
- (v) make a decision and inform the student
- (vi) complete revisions
- (vii) bring recommendation to the sub-committee for Higher Degrees (a sub-committee of Board and Council)

The average thesis examination period was seven months (approximately seven and a half months in 2004/05 and eight and a half months in 2003/04). In 2005/06 out of 298 research examinations 27 (9%) involved examinations periods of more than one year (see Fig. 4 below). This compares favourably with 2004/05 when 31 theses (11% of total) were under examination for more than 12 months.

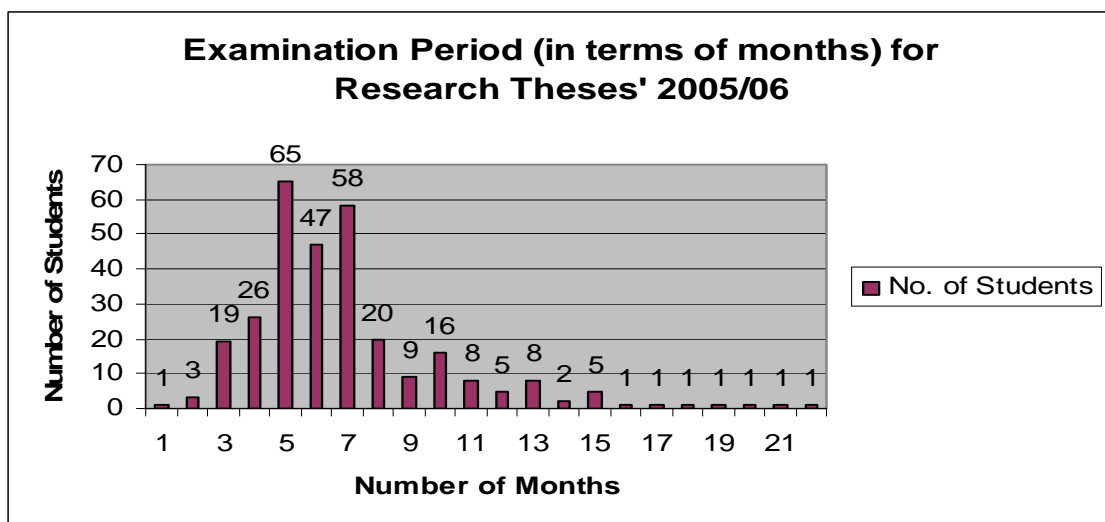


Figure 3. Examination period (in terms of months) for research theses. This figure includes twelve referred theses under examination with examination times between 7 and 35 months.

Appendix 4 allows for comparison of the number of research degrees awarded by Faculty and degree. Compared to the previous year, the number of awards by degree varies within class (e.g. M.Sc., Ph.D.) but also within a Faculty within a class.

- *Taught Courses – External Examiners*

Most external examiners are appointed for a three year period though, for some part-time courses, examiners are appointed for four years. All external examiners for taught courses must complete a standard form for the first two years of their tenure and, in their final year, are required to complete a more extensive report. Appendix 9 contains a list of External Examiners for taught courses for noting and approval by Council; 91 final reports have been received to date: of these, 49 were for Masters courses, 26 for Postgraduate Diplomas and 16 for joint Masters/Diploma courses.

- *Higher Doctorates*

The suspension on Higher doctorates was lifted in 2004/2005, and in 2005/06 the new regulations were put into operation for several submissions.

## 7. College Awards

The Graduate Studies Office is responsible for administering a number of separate College award schemes. In 2005/06 there were two major categories of research awards available to full-time students. Table 5 below includes the number of applications for these awards from 2003/04 to 2005/06

*Table 5: Application for awards 2003/04 to 2005/06*

|                          | Ussher Awards (1244) |       |       | Postgraduate Studentships (1252) |        |       | Category II (Old) Awards |       |       |
|--------------------------|----------------------|-------|-------|----------------------------------|--------|-------|--------------------------|-------|-------|
|                          | 03/04                | 04/05 | 05/06 | 03/04*                           | 04/05* | 05/06 | 03/04                    | 04/05 | 05/06 |
| <b>No. of Applicants</b> | 233                  | 241   | 300   | 259                              | 286    | 312   | 30                       | 38    | 0     |
| <b>No. Allocated</b>     | 6                    | 6     | 6     | 100                              | 100    | 65    | 31                       | 34    | 0     |

\* In 2003-04, and 2004-05 these awards were known as Unit Cost Studentships (Code 1228)

- *Ussher Awards (Award code 1244)*

There are normally six new Faculty Ussher awards available per year. Three are allocated to successful applicants in the Faculty of Arts and Humanities and Social and Human Sciences, and one for each other Faculty. Awardees get full-fee remission and a maintenance contribution of €12,700 per year, which is an increase of €4,193 on 2003/04. Since 2001 all the Faculty Ussher students have priority access to accommodation in College. In addition to the six annual Ussher fellowships there are five named Ussher fellowships individually awarded every three years.

- *Postgraduate Studentships (Award code 1252)*

Category II awards in 2005/06 were of two types – Postgraduate Studentships (award code 1252), and College Studentships or 'Old Awards' (award code 1228). Postgraduate Studentship EU-awardees obtained full-fee remission and a maintenance contribution of €8,000 per year; non-EU-awardees received fee remission equivalent to the sum of the appropriate EU-fee remission and the maintenance contribution.

Table 5 above shows the number of applications for these awards for 2003/04, 2004/05 and 2005/06. The number of applications received for the Postgraduate

Studentships increased slightly in 2005/06. The Category II awards are being phased out and therefore have no new applicants or allocations in 2005-06.

- *One year postgraduate research award for continuing students (Award code 7017)*

These awards, funded by the Trinity Trust and various benefactions are open to all postgraduate continuing students on the research register. There are 30 of these awards allocated on an annual basis, and the award is allocated for one year only. Students awarded this Postgraduate Award get their fees paid but only to the value of the EU fee. Non-EU students may also apply for the award and if successful, the EU amount is paid in part payment of their annual fee. Successful applicants also receive a maintenance grant to the value of €2,158 annually. In 2005/06 there were 126 applications for this award, an increase on the 119 applications submitted in 2004/05.

## 8. Travel Grants

The GSO administers a travel grant scheme from funds kindly made available by the Trinity Association and Trust and application details are available on the web.<sup>2</sup> In the academic year 2005/06, 114 students were granted a total sum of €40,912. For comparison, in the academic year 2004/05, 276 students were given grants totalling €96,875. 2005/06 was the first year in which no monies were carried forward from previous years. This explains the reduction in the total amount awarded.

Additionally, Graduate Research Students are now advised that, as Travel Grant funding is limited, students may only be granted one award in their academic career and this has led to a reduction in the number of applicants.

*Table 6: Trinity Trust Travel Grant Applications and Awards 2005-06.*

| Destination   | No. of students who applied | No. of students allocated funding | Amount requested | Amount allocated | Amount claimed |
|---------------|-----------------------------|-----------------------------------|------------------|------------------|----------------|
| Europe        | 140                         | 77                                | € 63,399.74      | €20,013.89       | €16,136.90     |
| USA & Canada  | 44                          | 25                                | € 42,816.66      | €14,009.06       | €13,200.06     |
| Rest of World | 17                          | 12                                | € 12,738.83      | €6,890.00        | €5,540.00      |
| Total         | 201                         | 114                               | € 118,955.23     | €40,912.95       | €34,876.96     |

## 9. Publications

The GSO is responsible for the production of three major publications and sources of information. These are the Graduate Studies website, the Graduate Studies Prospectus and the *University Calendar Part II*.

- *Graduate Studies website*

In 2006 the website was completely redesigned. Changes to the website include the facility for prospective students to request online or download a copy of the Postgraduate Prospectus in .pdf form

[http://www.tcd.ie/Graduate\\_Studies/docs/Trinity\\_Postgraduate\\_Prospectus2007](http://www.tcd.ie/Graduate_Studies/docs/Trinity_Postgraduate_Prospectus2007)

<sup>2</sup> [http://www.tcd.ie/Graduate\\_Studies/currentstudents/funding/travelgrants/index.php](http://www.tcd.ie/Graduate_Studies/currentstudents/funding/travelgrants/index.php)

and external examiners can now download the information and forms needed to return annual reports and research examination results and claim fee payments [http://www.tcd.ie/Graduate\\_Studies/externalexaminers/index.php](http://www.tcd.ie/Graduate_Studies/externalexaminers/index.php)

Academic staff now have online access to all standard GSO documentation, and the website includes detailed information on Graduate Student supervision, New Course Development, the Graduate Studies Committee (including Agendas and Minutes) and the taught and research admissions procedures.

- *Postgraduate Prospectus*

Since 1998 the Postgraduate Prospectus has been the primary printed form of publicity produced by the University for graduate students and is therefore distributed *gratis* to all intending applicants and all academic staff of the College and is also sent to all universities in Ireland and the U.K., as well as a selection of major institutions in Europe and elsewhere.

Changes to the 2006 Prospectus included a summary of each School, grouped within Faculties and contact details of each Director of Teaching and Learning (Postgraduate) were provided for prospective applicants along with information on each Schools research areas of expertise.

- *The University of Dublin Calendar Part II*

The *University Calendar Part II* contains the rules governing the academic progress and conduct of all postgraduate students, both taught and research. Since 1999/2000 the *Calendar Part II* has included the set of general regulations applicable to all postgraduate students, as well as more detailed regulations relating to students undertaking research and taught courses. This largely eliminates the need to refer to the *Calendar Part I* for postgraduate matters. Offprints of the *Calendar Part II* are given to all staff, all postgraduate students at registration and are now sent, *gratis*, to all universities in Ireland. 6,000 copies of the *Calendar Part II* were printed in each of the last 2 years.

## **10. Other Reporting Items**

- *Orientation day*

Since 2001/02, an orientation day organised by the GSO, has been held each year, just after Autumn Registration, for incoming postgraduate students. Various presentations were made to incoming students during the day by College staff and current students. Topics covered by these talks included summaries of the College's Counselling Service, Health Service, Library, IS Service, Statistical Advisory Service and Graduate Student Union.

As in the previous year, the orientation day was open to all incoming postgraduate students (taught and research). Approximately 600 students attended (an increase of 100 students on 2004/05).

## **11. Postgraduate Admissions Data 2006-07**

Postgraduate admissions data has been incorporated in the GSO Annual Report since 2004, and this year the Graduate Studies Office has included detailed admissions data for both research degrees and taught courses for the current academic year 2006-07. This year, for the first time, information on both the gender and fee status (EU/Non-EU) of applicants is included.

## **12. Research Supervision**

An important statistic for an academic unit, and for the College as a whole, is the activity of the academic staff in supervision. The supervision ratio (which is the number of research students divided by the number of academic staff eligible to supervise) is found to be relatively high throughout College with approximately 2.4 research students per academic staff member (see Appendix 8).

The Schools with the greatest number of research students are

- Medicine (201),
- Computer Science and Statistics (172),
- Engineering (139),
- Natural Sciences (136),
- Histories and Humanities (126),
- Social Sciences and Philosophy (123),

whereas the Schools with the highest supervision ratios are

- Chemistry (4.6),
- Irish School of Ecumenics (4.4),
- Physics (3.7),
- Genetics and Microbiology (3.6),
- Psychology (3.4),
- Education (3.2),
- Pharmacy (3.2).



*Appendix 1: Country/County of Origin of Students 2004-05 and 2005-06.  
Domiciliary origin of student at time of application to college.*

| <b>County/Country</b>             | <b>2005/2006</b> | <b>2004/2004</b> | <b>Change</b> |
|-----------------------------------|------------------|------------------|---------------|
| Carlow                            | 57               | 55               | 2             |
| Cavan                             | 36               | 38               | -2            |
| Clare                             | 30               | 38               | -8            |
| Cork City                         | 18               | 24               | -6            |
| Cork County                       | 103              | 94               | 9             |
| Donegal                           | 43               | 43               | 0             |
| Dublin City                       | 1507             | 1313             | 194           |
| Dublin County                     | 652              | 730              | -78           |
| Galway City                       | 29               | 32               | -3            |
| Galway County                     | 107              | 94               | 13            |
| Kerry                             | 59               | 50               | 9             |
| Kildare                           | 197              | 203              | -6            |
| Kilkenny                          | 58               | 63               | -5            |
| Laois                             | 50               | 46               | 4             |
| Leitrim                           | 16               | 20               | -4            |
| Limerick City                     | 6                | 8                | -2            |
| Limerick County                   | 34               | 32               | 2             |
| Longford                          | 23               | 19               | 4             |
| Louth                             | 98               | 80               | 18            |
| Mayo                              | 58               | 63               | -5            |
| Meath                             | 149              | 133              | 16            |
| Monaghan                          | 22               | 22               | 0             |
| Offaly                            | 41               | 43               | -2            |
| Roscommon                         | 30               | 33               | -3            |
| Sligo                             | 33               | 29               | 4             |
| Tipperary                         | 65               | 72               | -7            |
| Waterford City                    | 11               | 17               | -6            |
| Waterford County                  | 30               | 38               | -8            |
| Westmeath                         | 54               | 56               | -2            |
| Wexford                           | 106              | 90               | 16            |
| Wicklow                           | 155              | 142              | 13            |
| <b>Republic of Ireland</b>        | <b>3877</b>      | <b>3720</b>      | <b>157</b>    |
| Antrim                            | 9                | 8                | 1             |
| Armagh                            | 2                | 2                | 0             |
| Belfast City                      | 13               | 9                | 4             |
| Derry                             | 8                | 9                | -1            |
| Down                              | 12               | 8                | 4             |
| Fermanagh                         | 3                | 2                | 1             |
| Tyrone                            | 4                | 8                | -4            |
| <b>Northern Ireland</b>           | <b>51</b>        | <b>46</b>        | <b>5</b>      |
| <b>Sub-total (RoI &amp; N.I.)</b> | <b>3928</b>      | <b>3766</b>      | <b>162</b>    |
| Argentina                         | 2                |                  | 2             |
| Armenia                           | 1                | 1                | 0             |
| Australia                         | 4                | 2                | 2             |

|                           |    |    |    |
|---------------------------|----|----|----|
| Austria                   | 4  | 5  | -1 |
| Bangladesh                | 2  | 3  | -1 |
| Belarus                   |    | 1  | -1 |
| Belgium                   | 4  | 4  | 0  |
| Bahrain                   |    | 0  | 0  |
| Bosnia - Hercegovina      | 1  | 1  | 0  |
| Brazil                    | 4  | 2  | 2  |
| Brunei Darussalam         | 2  | 2  | 0  |
| Bulgaria                  | 2  | 3  | -1 |
| Cameroon                  |    | 1  | -1 |
| Canada                    | 22 | 20 | 2  |
| China                     | 27 | 13 | 14 |
| Colombia                  | 1  | 1  | 0  |
| Croatia                   | 1  | 1  | 0  |
| Cuba                      |    | 1  | -1 |
| Cyprus                    | 3  | 3  | 0  |
| Czech Republic            | 1  | 3  | -2 |
| Dem. Peoples Rep. Korea   | 2  | 1  | 1  |
| Denmark                   | 2  | 2  | 0  |
| Egypt                     | 1  | 1  | 0  |
| El Salvador               |    | 1  | -1 |
| Eritrea                   | 1  | 1  | 0  |
| Ethiopia                  | 14 | 6  | 8  |
| Finland                   | 4  | 1  | 3  |
| France                    | 36 | 29 | 7  |
| Germany                   | 40 | 37 | 3  |
| Ghana                     | 1  | 1  | 0  |
| Great Britain             | 99 | 95 | 4  |
| Greece                    | 19 | 15 | 4  |
| Hungary                   | 1  | 1  | 0  |
| Hong Kong                 | 2  |    | 2  |
| Iceland                   | 1  | 1  | 0  |
| India                     | 26 | 19 | 7  |
| Iran, Islamic Republic of | 1  | 1  | 0  |
| Iraq                      | 1  | 1  | 0  |
| Israel                    |    | 1  | -1 |
| Italy                     | 32 | 22 | 10 |
| Japan                     | 5  | 5  | 0  |
| Jordan                    | 2  |    | 2  |
| Kenya                     | 2  | 1  | 1  |
| Lao, Peoples Republic of  |    | 1  | -1 |
| Libyan Arab Jamahiriya    | 5  | 6  | -1 |
| Lithuania                 | 1  | 1  | 0  |
| Luxembourg                |    | 1  | -1 |
| Malaysia                  | 2  |    | 2  |
| Mexico                    | 2  | 5  | -3 |
| Moldova                   | 1  | 1  | 0  |
| Monaco                    | 1  | 1  | 0  |

|                                     |             |             |            |
|-------------------------------------|-------------|-------------|------------|
| Nepal                               |             | 1           | -1         |
| Netherlands Antilles                |             | 0           | 0          |
| New Zealand                         | 2           | 2           | 0          |
| Nigeria                             | 7           | 2           | 5          |
| Norway                              | 2           | 3           | -1         |
| Oman                                |             | 0           | 0          |
| Pakistan                            | 4           | 1           | 3          |
| Panama                              |             | 1           | -1         |
| Peru                                |             | 1           | -1         |
| Philippines                         | 1           | 1           | 0          |
| Poland                              | 15          | 12          | 3          |
| Portugal                            | 2           | 3           | -1         |
| Republic of Korea                   | 4           | 3           | 1          |
| Romania                             | 1           | 1           | 0          |
| Russian Federation                  | 4           | 8           | -4         |
| Saudi Arabia                        | 1           | 3           | -2         |
| Serbia and Montenegro               | 1           |             | 1          |
| Singapore                           |             | 1           | -1         |
| Slovakia                            | 1           | 0           | 1          |
| Slovenia                            | 2           |             | 2          |
| South Africa                        | 2           | 2           | 0          |
| Spain                               | 19          | 18          | 1          |
| Sri Lanka                           | 3           | 2           | 1          |
| Sudan                               |             | 0           | 0          |
| Sweden                              | 3           | 1           | 2          |
| Switzerland                         | 4           | 3           | 1          |
| Syrian Arab Republic                |             | 1           | -1         |
| Taiwan, Province of China           | 2           | 1           | 1          |
| Tanzania                            | 2           |             | 2          |
| Thailand                            | 4           | 2           | 2          |
| Turkey                              | 2           |             | 2          |
| The Netherlands                     | 9           | 10          | -1         |
| Uganda                              | 3           | 2           | 1          |
| Ukraine                             |             | 1           | -1         |
| United Arab Emirates                | 1           | 1           | 0          |
| United States of America            | 113         | 117         | -4         |
| Venezuela                           |             | 0           | 0          |
| Zambia                              |             | 0           | 0          |
| Zimbabwe                            | 2           | 3           | -1         |
| <b>Subtotal from EU (excl Ire.)</b> | <b>297</b>  | <b>263</b>  | <b>34</b>  |
| <b>Subtotal from non-EU</b>         | <b>304</b>  | <b>269</b>  | <b>35</b>  |
| <b>Total</b>                        | <b>4531</b> | <b>4298</b> | <b>233</b> |

|                                 |                |                |  |
|---------------------------------|----------------|----------------|--|
| <b>% international students</b> | <b>13.26 %</b> | <b>12.38 %</b> |  |
| <b>% non- EU students</b>       | <b>6.71 %</b>  | <b>6.26 %</b>  |  |

*Appendix 2: List of external examiners for research degrees by Faculty in 2005/06 listed alphabetically by School*

| <b>Name</b>         | <b>Degree</b> | <b>School</b>               | <b>Academic Address</b>                                                                                                       |
|---------------------|---------------|-----------------------------|-------------------------------------------------------------------------------------------------------------------------------|
| Dr A. MacDonald     | Ph.D.         | Biochemistry and Immunology | Institute of Immunology & Infection Research, University of Edinburgh, Scotland, U.K.                                         |
| Prof. M. Unzeta     | Ph.D.         | Biochemistry and Immunology | Dept. of Biochemistry, Faculty of Medicine, Universitat Autònoma de Barcelona, Spain                                          |
| Mr. D. Morgan       | Ph.D.         | Biochemistry and Immunology | Dept. of Pathology & Microbiology, University of Bristol, U.K.                                                                |
| Dr L. McLellan      | Ph.D.         | Biochemistry and Immunology | Dept. of Surgery and Oncology, Ninewells Hospital and Medical School, Dundee, Scotland, U.K.                                  |
| Dr J. Coote         | Ph.D.         | Biochemistry and Immunology | Infection & Immunity Division, Institute of Biomedical and Life Sciences, University of Glasgow, Scotland, U.K.               |
| Dr N. Gay           | Ph.D.         | Biochemistry and Immunology | Dept. of Biochemistry, University of Cambridge, U.K.                                                                          |
| Dr P. Jezek         | Ph.D.         | Biochemistry and Immunology | Membrane Transport Biophysics, Institute of Physiology, The Academy of Sciences of the Czech Republic, Prague, Czech Republic |
| Dr D. Doherty       | Ph.D.         | Biochemistry and Immunology | Dept. of Biology, N.U.I. Maynooth                                                                                             |
| Dr F. Boomsma       | Ph.D.         | Biochemistry and Immunology | Dept. of Internal Medicine, Erasmus MC, Rotterdam, The Netherlands                                                            |
| Prof. M. Gore       | Ph.D.         | Biochemistry and Immunology | Biomolecular Sciences, School of Biological Sciences, University of Southampton, U.K.                                         |
| Mr. B. McMahon      | Ph.D.         | Biochemistry and Immunology | Institute of Immunology, N.U.I. Maynooth                                                                                      |
| Dr C. Taylor        | Ph.D.         | Biochemistry and Immunology | Medicine and Therapeutics Dept., Conway Institute, U.C.D.                                                                     |
| Prof. D. O'Donoghue | M.Sc.         | Biochemistry and Immunology | Dept. of Gastroenterology, St. Vincent's University Hospital, Dublin                                                          |
| Prof. A. Daly       | Ph.D.         | Biochemistry and Immunology | Clinical and Laboratory Sciences, The Medical School, University of Newcastle-upon-Tyne, U.K.                                 |
| Dr J. Cunningham    | M.Litt.       | Business                    | Dept. of Management, N.U.I. Galway                                                                                            |
| Prof. M. Saunders   | Ph.D.         | Business                    | The Business School, Oxford Brookes University, U.K.                                                                          |
| Prof. L. Fitzgerald | Ph.D.         | Business                    | Dept. of HRM, Faculty of Business Studies and Law, De Montfort University, Leicester, U.K.                                    |
| Prof. A. Francis    | Ph.D.         | Business                    | Bradford University School of Management, West Yorkshire, U.K.                                                                |
| Dr B. Fynes         | Ph.D.         | Business                    | Smurfit School of Business, U.C.D.                                                                                            |
| Prof. J. Steeley    | Ph.D.         | Business                    | Finance, Accounting & Law Group, Aston Business School, Aston University, Birmingham, U.K.                                    |

|                         |       |                                 |                                                                                                                      |
|-------------------------|-------|---------------------------------|----------------------------------------------------------------------------------------------------------------------|
| Prof. H. Gamble         | Ph.D. | Chemistry                       | School of Electrical and Electronic Engineering, The Queen's University of Belfast, Northern Ireland, United Kingdom |
| Prof. R. More-O'Ferrall | Ph.D. | Chemistry                       | School of Chemistry & Chemical Biology, University College Dublin                                                    |
| Dr G. Sheldrake         | Ph.D. | Chemistry                       | School of Chemistry, Queen's University of Belfast, Northern Ireland, U.K.                                           |
| Prof. D. Leigh          | Ph.D. | Chemistry                       | School of Chemistry, University of Edinburgh, Scotland, U.K.                                                         |
| Prof. W. Richards       | Ph.D. | Chemistry                       | Brasenose College, Oxford, U.K.                                                                                      |
| Dr S. James             | Ph.D. | Chemistry                       | Queen's University of Belfast, Northern Ireland, U.K.                                                                |
| Prof. D. Cardin         | Ph.D. | Chemistry                       | School of Chemistry, The University of Reading, U.K.                                                                 |
| Prof. V. Kessler        | Ph.D. | Chemistry                       | Professor of Inorganic and Physical Chemistry, Dept. of Chemistry, SLU, Sweden                                       |
| Dr N. Williams          | Ph.D. | Chemistry                       | Chemistry Dept., The University of Sheffield, U.K.                                                                   |
| Prof. Dr C. Housecroft  | Ph.D. | Chemistry                       | Departement Chemie, University of Basel, Switzerland                                                                 |
| Dr C. Hogger            | Ph.D. | Computer Science and Statistics | Dept. of Computing, Imperial College London, U.K.                                                                    |
| Dr M. Carlsson          | Ph.D. | Computer Science and Statistics | Swedish Institute of Computer Science AB, Uppsala, Sweden                                                            |
| Prof. C. Mitchell       | Ph.D. | Computer Science and Statistics | Information Security Group, Royal Holloway, University of London, U.K.                                               |
| Prof. P. Nixon          | Ph.D. | Computer Science and Statistics | School of Computer Science and Informatics, U.C.D.                                                                   |
| Mr. M. Scott            | M.Sc. | Computer Science and Statistics | School of Computing, D.C.U.                                                                                          |
| Dr S. McGrath           | M.Sc. | Computer Science and Statistics | Dept. of Electronic and Computer Engineering, University of Limerick                                                 |
| Prof. W. Purgathofer    | Ph.D. | Computer Science and Statistics | Wien, Austria                                                                                                        |
| Dr A. Quigley           | M.Sc. | Computer Science and Statistics | Dept. of Computer Science, U.C.D.                                                                                    |
| Mr. A. Chalmers         | Ph.D. | Computer Science and Statistics | Dept. of Computer Science, University of Bristol, U.K.                                                               |
| Dr S. Chen              | Ph.D. | Computer Science and Statistics | School of Information Systems Computing and Mathematics, Brunel University, Middlesex, U.K.                          |
| Prof. M. Aksit          | Ph.D. | Computer Science and Statistics | Dept. of Computer Science, University of Twente, Enschede, The Netherlands                                           |
| Prof. N. John           | Ph.D. | Computer Science and Statistics | School of Informatics, University of Wales, Bangor, U.K.                                                             |
| Dr S. Foley             | Ph.D. | Computer Science and Statistics | Dept. of Computer Science, U.C.C.                                                                                    |
| Dr J. Power             | Ph.D. | Computer Science and Statistics | Dept. of Computer Science, N.U.I. Maynooth                                                                           |
| Dr P. Funk              | Ph.D. | Computer Science and Statistics | Dept. of Computer Science and Electronics, Malardalen University, Vasteras, Sweden                                   |

|                      |       |                                 |                                                                                                                                               |
|----------------------|-------|---------------------------------|-----------------------------------------------------------------------------------------------------------------------------------------------|
| Dr A. Amira          | M.Sc. | Computer Science and Statistics | School of Computer Science, Queen's University of Belfast, Northern Ireland, U.K.                                                             |
| Dr H. Ashman         | Ph.D. | Computer Science and Statistics | University of Nottingham, U.K.                                                                                                                |
| Dr J. McCarthy       | Ph.D. | Computer Science and Statistics | Dept. of Computer Science, U.C.D.                                                                                                             |
| Dr M. Hurn           | Ph.D. | Computer Science and Statistics | Mathematical Sciences, University of Bath, U.K.                                                                                               |
| Dr D. Kaltra         | M.Sc. | Computer Science and Statistics | Centre for Health Informatics & Multi-Professional Education, Royal Free & University College Medical School, University College London, U.K. |
| Dr J. Murphy         | M.Sc. | Computer Science and Statistics | School of Computing, D.C.U.                                                                                                                   |
| Prof. Y. Chrysanthou | Ph.D. | Computer Science and Statistics | Dept. of Computer Science, University of Cyprus, Nicosia, Cyprus                                                                              |
| Dr K. Hammond        | Ph.D. | Computer Science and Statistics | Division of Computer Science, School of Mathematical and Computational Sciences, University of St. Andrews, Fife, Scotland, U.K.              |
| Dr D. Patterson      | Ph.D. | Computer Science and Statistics | School of Computing Science, University of Ulster, Northern Ireland, U.K.                                                                     |
| Dr J. Connolly       | Ph.D. | Computer Science and Statistics | Dept. of Statistics, U.C.D.                                                                                                                   |
| Dr C. Fernandez      | Ph.D. | Computer Science and Statistics | Dept. of Mathematics and Statistics, Lancaster University. U.K.                                                                               |
| Prof. A. Bowman      | Ph.D. | Computer Science and Statistics | Dept. of Statistics, University of Glasgow, Scotland, U.K.                                                                                    |
| Dr M. Petridis       | Ph.D. | Computer Science and Statistics | School of Computing and Mathematical Sciences, University of Greenwich, Old Naval College, London, U.K.                                       |
| Mr. G. O'Hare        | M.Sc. | Computer Science and Statistics | Dept. of Computer Science, U.C.D.                                                                                                             |
| Dr E. Doyle          | M.Sc. | Computer Science and Statistics | Dept. of Control Systems Engineering, School of Control Systems and Electrical Engineering, D.I.T.                                            |
| Prof. G. Canole      | Ph.D. | Computer Science and Statistics | IET, Open University, Milton Keynes, U.K.                                                                                                     |
| Prof. E. Jul         | Ph.D. | Computer Science and Statistics | DIKU, University of Copenhagen, Denmark                                                                                                       |
| Mr. T. Hall          | M.Sc. | Computer Science and Statistics | Dept. of Electronic Engineering, University of Limerick                                                                                       |
| Dr A. Schmidt        | Ph.D. | Computer Science and Statistics | Head of the Independent Junior Research Group, 'Embedded Interaction', University of Munich, Germany                                          |
| Dr S. Fisher         | Ph.D. | Computer Science and Statistics | CCLRC Rutherford Appleton Lab, Oxfordshire, U.K.                                                                                              |
| Prof. J. Dongarra    | Ph.D. | Computer Science and Statistics | Innovative Computing Laboratory, Computer Science Department, University of Tennessee, U.S.A.                                                 |

|                     |            |                                 |                                                                                                           |
|---------------------|------------|---------------------------------|-----------------------------------------------------------------------------------------------------------|
| Prof. J. Morrison   | Ph.D.      | Computer Science and Statistics | Dept. of Computer Science, U.C.C.                                                                         |
| Prof. R. Noss       | Ph.D.      | Computer Science and Statistics | London Knowledge Lab, Institute of Education, London, U.K.                                                |
| Dr F. Keller        | M.Sc.      | Computer Science and Statistics | School of Informatics, University of Edinburgh, Scotland, U.K.                                            |
| Dr R. Saunders      | M.Sc.      | Computer Science and Statistics | Oscail, National Distance Education Centre, D.C.U.                                                        |
| Prof. F. McDonald   | M.Dent.Ch. | Dental Science                  | Dept. of Orthodontics, GKT Dental Institute, London, U.K.                                                 |
| Dr C. McCreary      | Ph.D.      | Dental Science                  | Dept. of Oral Medicine, Cork University Dental School and Hospital                                        |
| Dr A. Staines       | Ph.D.      | Dental Science                  | Dept. of Public Health Medicine, U.C.D.                                                                   |
| Dr C. Irwin         | M.Dent.Ch. | Dental Science                  | Division of Restorative Dentistry (Periodontology), Queen's University of Belfast, Northern Ireland, U.K. |
| Prof. S. Renvert    | M.Dent.Ch. | Dental Science                  | Dept. of Health Sciences, Kristianstad University, Sweden                                                 |
| Prof. N. Gow        | Ph.D.      | Dental Science                  | School of Medical Sciences, Institute of Medical Sciences, University of Aberdeen, Scotland, U.K.         |
| Dr B. Hube          | Ph.D.      | Dental Science                  | Robert Koch-Institut, Berlin, Germany                                                                     |
| Dr T. Skinner       | Ph.D.      | Dental Science                  | Dept. of Psychology, University of Southampton, U.K.                                                      |
| Dr S. Dinneen       | Ph.D.      | Dental Science                  | Dept. of Medicine, Clinical Science Institute, University College Hospital, Galway                        |
| Prof. D. Chisholm   | Ph.D.      | Dental Science                  | Dept. of Oral Surgery and Medicine, School of Dentistry, University of Dundee, Scotland, U.K.             |
| Dr F. Burke         | M.Dent.Ch. | Dental Science                  | University of Dental School & Hospital, Co. Cork                                                          |
| Dr R. Aldous        | M.Litt.    | Drama, Film and Music           | Dept. of History, U.C.D.                                                                                  |
| Dr E. McSweeney     | M.Litt.    | Drama, Film and Music           | School of Humanities, Waterford Institute of Technology                                                   |
| Prof. A. Amaral     | Ph.D.      | Drama, Film and Music           | Sao Paulo, Brazil                                                                                         |
| Dr D. Jarmon        | Ph.D.      | Drama, Film and Music           | Royal Northern College of Music, Yorkshire, U.K.                                                          |
| Dr E. McSweeney     | M.Litt.    | Drama, Film and Music           | School of Humanities (Music), Waterford Institute of Technology                                           |
| Prof. R. Killick    | M.Litt.    | Drama, Film and Music           | School of Modern Languages & Cultures (French), University of Leeds, U.K.                                 |
| Dr C. Morash        | Ph.D.      | Drama, Film and Music           | Centre for Media Studies, N.U.I. Maynooth                                                                 |
| Prof. S. Redfern    | Ph.D.      | Education                       | Nursing Research Unit, King's College London, U.K.                                                        |
| Prof. J. Coolahan   | Ph.D.      | Education                       | 2 Bushfield Terrace, Dublin 4                                                                             |
| Dr M. Killeavy      | Ph.D.      | Education                       | Dept. of Education, U.C.D.                                                                                |
| Prof. J. O'Donoghue | Ph.D.      | Education                       | Mathematics & Statistics Dept., University of Limerick                                                    |
| Prof. R. Porquier   | Ph.D.      | Education                       | Departement des Sciences du Langages, Universite Paris X, Nanterre Cedex, France                          |
| Prof. A. McClelland | Ph.D.      | Education                       | Leconfield, Beverley, East Riding of Yorkshire, U.K.                                                      |

|                             |         |             |                                                                                                                 |
|-----------------------------|---------|-------------|-----------------------------------------------------------------------------------------------------------------|
| Dr M. Ammann                | M.Sc.   | Engineering | School of Engineering & Communication Engineering, D.I.T.                                                       |
| Mr. H. Fogarty              | M.A.I.  | Engineering | SIAC Construction, Dublin                                                                                       |
| Dr J. Lasenby               | M.Sc.   | Engineering | Signal Processing Group, Engineering Dept., Cambridge University, U.K.                                          |
| Dr M. Richardson            | M.A.I.  | Engineering | Dept. of Civil Engineering, U.C.D.                                                                              |
| Dr A. Schwarzbacher         | M.Sc.   | Engineering | School of Electronic and Communications Engineering, D.I.T.                                                     |
| Prof. P. McHugh             | M.Sc.   | Engineering | Dept. of Mechanical & Biomedical Engineering, N.U.I. Galway                                                     |
| Prof. R. Carneiro De Barros | Ph.D.   | Engineering | Dept. of Civil Engineering, Faculdade de Engenharia, Porto, Portugal                                            |
| Prof. C. Jacobs             | Ph.D.   | Engineering | Dept. of Mechanical Engineering, Stanford University, California, U.S.A.                                        |
| Prof. P. Goransson          | M.Sc.   | Engineering | Dept. of Aeronautical and Vehicle Engineering, Royal Institute of Technology, Stockholm, Sweden                 |
| Prof. M. Davies             | Ph.D.   | Engineering | Dept. of Mechanical & Aeronautical Engineering, University of Limerick                                          |
| Dr H. Gulyas                | Ph.D.   | Engineering | Institute of Municipal and Industrial Wastewater Treatment, Technische Universität Hamburg-Harburg, Germany     |
| Prof. P. Banfill            | M.Sc.   | Engineering | School of the Built Environment, Heriot Watt University, Edinburgh, Scotland, U.K.                              |
| Prof. A. Kocat              | M.Sc.   | Engineering | Institute of Physics, Silesian University, Katowice, Poland                                                     |
| Prof. Dr G. De Haan         | Ph.D.   | Engineering | Video Processing Group, Philips Research Laboratories, Eindhoven, The Netherlands                               |
| Prof. G. Parr               | Ph.D.   | Engineering | School of Computing and Information Engineering, University of Ulster, Coleraine Campus, Northern Ireland, U.K. |
| Dr P. Young                 | Ph.D.   | Engineering | Dept. of Mechanical Engineering, D.C.U.                                                                         |
| Prof. W. Staszewski         | Ph.D.   | Engineering | Dept. of Mechanical Engineering, University of Sheffield, U.K.                                                  |
| Prof. Y. Gervais            | Ph.D.   | Engineering | LEA, Poitiers Cedex, France                                                                                     |
| Dr J. Timoney               | M.Sc.   | Engineering | Dept. of Computer Science, N.U.I. Maynooth                                                                      |
| Prof. M. Clayton            | Ph.D.   | English     | Dept. of English, U.C.D.                                                                                        |
| Prof. H. Magennis           | Ph.D.   | English     | School of English, Queen's University of Belfast, Northern Ireland, U.K.                                        |
| Prof. E. Andrews            | Ph.D.   | English     | Dept. of Languages & Literature, University of Ulster, Coleraine, Northern Ireland, U.K.                        |
| Prof. N. Vance              | Ph.D.   | English     | Dept. of English, University of Sussex, U.K.                                                                    |
| Dr A. Fogarty               | Ph.D.   | English     | School of English and Drama, U.C.D.                                                                             |
| Prof. P. Waugh              | Ph.D.   | English     | Dept. of English Studies, Durham University, U.K.                                                               |
| Prof. A. Smith              | Ph.D.   | English     | Dept. of English, University of Stirling, U.K.                                                                  |
| Prof. P. Coughlan           | Ph.D.   | English     | Department of English, U.C.C.                                                                                   |
| Dr P. Denman                | M.Litt. | English     | Dept. of English, N.U.I. Maynooth                                                                               |
|                             |         |             |                                                                                                                 |



|                           |         |                          |                                                                                                              |
|---------------------------|---------|--------------------------|--------------------------------------------------------------------------------------------------------------|
| Prof. H. Porter Abbott    | Ph.D.   | English                  | Dept. of English, University of California, U.S.A.                                                           |
| Prof. M. Pincombe         | Ph.D.   | English                  | School of English Literature and Linguistics, University of Newcastle, U.K.                                  |
| Dr M. Kelleher            | Ph.D.   | English                  | Dept. of English, N.U.I. Maynooth                                                                            |
| Dr C. Sumpter             | M.Litt. | English                  | School of English, Queen's University of Belfast, Northern Ireland, U.K.                                     |
| Dr M. Laffan              | Ph.D.   | Histories and Humanities | Dept. of History, U.C.D.                                                                                     |
| Prof. B. Hamilton         | Ph.D.   | Histories and Humanities | Dept. of History, University of Nottingham, U.K.                                                             |
| Prof. M. Daly             | Ph.D.   | Histories and Humanities | Dept. of History, U.C.D.                                                                                     |
| Prof. J. Horgan           | Ph.D.   | Histories and Humanities | School of Communications, D.C.U.                                                                             |
| Prof. K. O'Neill          | Ph.D.   | Histories and Humanities | History Dept., Boston College, U.S.A.                                                                        |
| Dr K. McElrath            | Ph.D.   | Histories and Humanities | School of Sociology and Social Policy, Queen's University of Belfast, Northern Ireland, U.K.                 |
| Prof. T. Fraser           | Ph.D.   | Histories and Humanities | Magee College, University of Ulster, Northern Ireland, U.K.                                                  |
| Dr M. Humphries           | M.Litt. | Histories and Humanities | Dept. of Ancient Classics, N.U.I. Maynooth                                                                   |
| Prof. B. Hayes            | Ph.D.   | Histories and Humanities | Dept. of Sociology, University of Aberdeen, Scotland, U.K.                                                   |
| Prof. S. De Schaepdrijver | Ph.D.   | Histories and Humanities | Netherlands Institute for Advanced Study in the Humanities and Social Sciences, Prwassenaar, The Netherlands |
| Dr A. Noble               | M.Litt. | Histories and Humanities | Dept. of English, University of Strathclyde, Glasgow, Scotland, U.K.                                         |
| Prof. P. Arthur           | Ph.D.   | Histories and Humanities | School of History and International Affairs, Magee College, University of Ulster, Northern Ireland, U.K.     |
| Prof. P. Hardie           | Ph.D.   | Histories and Humanities | Corpus Christie College, Oxford, U.K.                                                                        |
| Prof. M. Dewar            | Ph.D.   | Histories and Humanities | Dept. of Classics, University of Toronto, Canada                                                             |
| Dr T. O'hAnnrachain       | M.Litt. | Histories and Humanities | School of Histories and Archives, U.C.D.                                                                     |
| Prof. J. Winter           | Ph.D.   | Histories and Humanities | Dept. of History and Civilisation, European University Institute, Florence, Italy                            |
| Dr K. McGroarty           | M.Litt. | Histories and Humanities | Dept. of Ancient Classics, N.U.I. Maynooth                                                                   |
| Mr. J. McGuire            | Ph.D.   | Histories and Humanities | School of Histories and Humanities, U.C.D.                                                                   |
| Prof. M. Herbert          | Ph.D.   | Histories and Humanities | Dept. of Early & Medieval History, Faculty of Celtic Studies, U.C.C.                                         |
| Prof. A. Simms            | Ph.D.   | Histories and Humanities | The Royal Irish Academy, Dublin                                                                              |
|                           |         |                          |                                                                                                              |

|                     |         |                                               |                                                                                                                                                                              |
|---------------------|---------|-----------------------------------------------|------------------------------------------------------------------------------------------------------------------------------------------------------------------------------|
| Prof. D. Forrester  | Ph.D.   | Irish School of Ecumenics                     | School of Divinity, University of Edinburgh, Scotland, U.K.                                                                                                                  |
| Prof. T. Lodge      | Ph.D.   | Irish School of Ecumenics                     | Dept. of Politics and Public Administration, University of Limerick                                                                                                          |
| Prof. D. Walters    | Ph.D.   | Languages, Literatures and Cultural Studies   | Dept. of Hispanic Studies, School of Modern Languages, Exeter University, U.K.                                                                                               |
| Prof. A. Sinclair   | Ph.D.   | Languages, Literatures and Cultural Studies   | Dept. of Spanish and Portuguese, University of Cambridge, U.K.                                                                                                               |
| Prof. H. Chambers   | M.Litt. | Languages, Literatures and Cultural Studies   | Dept. of German, University of Saint Andrews, Fife, Scotland, U.K.                                                                                                           |
| Prof. B. Murdoch    | Ph.D.   | Languages, Literatures and Cultural Studies   | School of Modern Languages & Cultures, Stirling University, U.K.                                                                                                             |
| Dr D. Maddon        | M.Litt. | Law                                           | University College Cork                                                                                                                                                      |
| Prof. W. Schabas    | M.Litt. | Law                                           | Irish Centre for Human Rights, N.U.I. Galway                                                                                                                                 |
| Prof. C. Gearty     | Ph.D.   | Law                                           | Centre for the Study of Human Rights, London School of Economics and Political Science, U.K.                                                                                 |
| Prof. D. Morgan     | Ph.D.   | Law                                           | Faculty of Law, U.C.C.                                                                                                                                                       |
| Mr. F. Martin       | M.Litt. | Law                                           | Faculty of Law, U.C.C.                                                                                                                                                       |
| Dr D. Tomkin        | M.Litt. | Law                                           | School of Law and Government, D.C.U.                                                                                                                                         |
| Prof. G. Morse      | Ph.D.   | Law                                           | School of Law, University of Birmingham, U.K.                                                                                                                                |
| Prof. R. Whish      | Ph.D.   | Law                                           | School of Law, King's College London, U.K.                                                                                                                                   |
| Prof. C. Harvey     | M.Litt. | Law                                           | School of Law, Queen's University of Belfast, Northern Ireland, U.K.                                                                                                         |
| Mr. R. Byrne        | Ph.D.   | Law                                           | Law Reform Commission, Dublin                                                                                                                                                |
| Prof. M. MacMahon   | Ph.D.   | Linguistic, Speech and Communication Sciences | Dept. of English Language, University of Glasgow, Scotland, U.K.                                                                                                             |
| Prof. C. Munoz      | Ph.D.   | Linguistic, Speech and Communication Sciences | Dept. of Filologia Anglesa i Alemanya, Facultat de Filologia, Universitat de Barcelona, Spain                                                                                |
| Prof. V. Aohonen    | Ph.D.   | Linguistic, Speech and Communication Sciences | Dept. of Teacher Education, Tampere University, Finland                                                                                                                      |
| Prof. Dr H. Krumm   | Ph.D.   | Linguistic, Speech and Communication Sciences | Institut fur Germanistik, Universitat Wien, Austria                                                                                                                          |
| Prof. C. Davies     | Ph.D.   | Mathematics                                   | Dept. of Physics & Astronomy, University of Glasgow, Scotland, U.K                                                                                                           |
| Dr C. McNeile       | Ph.D.   | Mathematics                                   | Division of Theoretical Physics, Dept. of Mathematical Sciences, University of Liverpool, U.K.                                                                               |
| Prof. T. Tchraikian | Ph.D.   | Mathematics                                   | Dept. of Mathematical Physics, N.U.I. Maynooth                                                                                                                               |
| Prof. P. Boyle      | Ph.D.   | Mathematics                                   | Centre for Advanced Studies in France, School of Accountancy, University of Waterloo, Ontario, Canada                                                                        |
| Dr D. Waldron       | M.D.    | Medicine                                      | Dept. of Surgery, Regional General Hospital, Dooradoyle, Co. Limerick                                                                                                        |
| Dr A. Bell          | M.D.    | Medicine                                      | Arthritis Research Group, The Queen's University of Belfast, Muscilo-Skeletal Education and Research Unit, Musgrave Park Hospital, Belfast, Northern Ireland, United Kingdom |

|                       |       |          |                                                                                                                  |
|-----------------------|-------|----------|------------------------------------------------------------------------------------------------------------------|
| Prof. I. Hann         | M.D.  | Medicine | Dept. of Haematology / Oncology, Great Ormond Street Children's Hospital, London, United Kingdom                 |
| Prof. Y. Mahida       | Ph.D. | Medicine | Centre for Molecular Sciences, Institute of Infection, Immunity and Inflammation, University of Nottingham, U.K. |
| Prof. T. Lappin       | Ph.D. | Medicine | Dept. of Haematology, Belfast City Hospital, Northern Ireland, U.K.                                              |
| Prof. G. Collingridge | Ph.D. | Medicine | Dept. of Anatomy, University of Bristol, U.K.                                                                    |
| Dr A. Bell            | M.D.  | Medicine | Neonatal Dept., The Ulster Hospital, Belfast, Northern Ireland, U.K.                                             |
| Prof. G. Wilkinson    | M.D.  | Medicine | Dept. of Psychiatry, The University of Liverpool, Royal Liverpool Hospital, U.K.                                 |
| Prof. H. Miller       | M.D.  | Medicine | Division of Veterinary Clinical Studies R(D)SVS, University of Edinburgh, Scotland, U.K.                         |
| Dr S. O'Keefe         | Ph.D. | Medicine | Merlin Park Hospital, Co. Galway                                                                                 |
| Dr G. O'Neill         | Ph.D. | Medicine | Centre for Teaching and Learning, U.C.D.                                                                         |
| Prof. B. Ludvik       | Ph.D. | Medicine | Medical University of Vienna, Dept. of Medicine III, Division of Endocrinology and Metabolism, Vienna, Austria   |
| Dr B. Wilkins         | M.Sc. | Medicine | Dept. of Anatomy, N.U.I. Galway                                                                                  |
| Prof. P. Grace        | M.D.  | Medicine | Dept. of Surgery (Vascular), Limerick Regional Hospital                                                          |
| Dr P. Newsholme       | Ph.D. | Medicine | Dept. of Biochemistry, U.C.D.                                                                                    |
| Prof. R. Grimble      | Ph.D. | Medicine | Institute of Human Nutrition, University of Southampton, Bolderwood, U.K.                                        |
| Prof. M. Sculpher     | Ph.D. | Medicine | Professor of Health Economics, University of York, U.K.                                                          |
| Prof. J. Ironside     | M.D.  | Medicine | Dept. of Clinical Neuropathology, University of Edinburgh, Scotland, U.K.                                        |
| Prof. G. Nash         | Ph.D. | Medicine | Dept. of Physiology, University of Birmingham, U.K.                                                              |
| Prof. N. Lemoine      | Ph.D. | Medicine | Cancer Research U.K., Molecular Oncology Unit, Barts, and the London School of Medicine and Dentistry, U.K.      |
| Dr D. Anthony         | Ph.D. | Medicine | Dept. of Pharmacology, University of Oxford, U.K.                                                                |
| Prof. T. Mayhew       | M.Sc. | Medicine | Dept. of Anatomy, University of Nottingham, U.K.                                                                 |
| Dr A. Vincente        | Ph.D. | Medicine | Instituto Gulbenkian de Ciencia, Oeiras, Portugal                                                                |
| Prof. M. O'Donovan    | Ph.D. | Medicine | Dept. of Psychological Medicine, Cardiff University, Wales, U.K.                                                 |
| Dr G. Van Osch        | Ph.D. | Medicine | Erasmus Orthopaedic Research Laboratory, Erasmus University Rotterdam, The Netherlands                           |
| Dr M. Thow            | M.Sc. | Medicine | Division of Physiotherapy, School of Health and Social Care, Glasgow Caledonian University, Scotland, U.K.       |
| Prof. F. Bellisle     | Ph.D. | Medicine | Diabetes Dept., Hotel Dieu Hospital, Paris, France                                                               |
| Prof. M. Goggins      | Ph.D. | Medicine | The Sol Goldman Pancreatic Cancer Research Centre, John Hopkins Medical Institutions, Baltimore, U.S.A.          |

|                      |       |                  |                                                                                                                        |
|----------------------|-------|------------------|------------------------------------------------------------------------------------------------------------------------|
| Prof. B. Taylor      | Ph.D. | Medicine         | Dept. of Paediatrics and Child Health, University College London, Royal Free & University College Medical School, U.K. |
| Dr F. Steele         | Ph.D. | Medicine         | Centre for Multilevel Modelling, Graduate School of Education, University of Bristol, U.K.                             |
| Prof. M. Leader      | M.Sc. | Medicine         | Dept. of Histopathology, Royal College of Surgeons, Beaumont Hospital                                                  |
| Dr M. Buckley        | M.Sc. | Medicine         | Dept. of Gastroenterology, Mercy University Hospital, Co. Cork                                                         |
| Dr D. Carson         | M.D.  | Medicine         | Consultant Paediatrician/Senior Lecturer, Royal Belfast Hospital, Northern Ireland, U.K.                               |
| Dr M. Castro Cabezas | Ph.D. | Medicine         | St. Franciscus Gasthuis Rotterdam, Dept. of Internal Medicine, The Netherlands                                         |
| Dr D. Bell           | M.Sc. | Medicine         | Division of Medicine and Therapeutics, School of Medicine, Queen's University of Belfast, Northern Ireland, U.K.       |
| Mr. R. Parks         | M.D.  | Medicine         | Dept. of Surgery, University of Edinburgh, Scotland, U.K.                                                              |
| Dr P. Klenerman      | M.D.  | Medicine         | Nuffield Dept. of Medicine, John Radcliffe Hospital, Oxford, U.K.                                                      |
| Prof. B. Hagmar      | Ph.D. | Medicine         | Pathology Department, Rikshospitalet, Oslo, Norway                                                                     |
| Prof. M. McEldowney  | Ph.D. | Natural Sciences | School of Environmental Planning, Queen's University of Belfast, Northern Ireland, U.K.                                |
| Dr Z. Shipton        | Ph.D. | Natural Sciences | Centre for Geosciences, University of Glasgow, Scotland, U.K.                                                          |
| Prof. D. Sanderson   | Ph.D. | Natural Sciences | Dept. of Earth Sciences and Engineering, Royal School of Mines, Imperial College London, U.K.                          |
| Dr D. Kenny          | M.Sc. | Natural Sciences | Dept. of Animal Science, Faculty of Agri-food and Environment, U.C.D.                                                  |
| Dr M. Johnson        | Ph.D. | Natural Sciences | Dept. of Biology & Biochemistry, Queen's University of Belfast, Northern Ireland, U.K.                                 |
| Dr R. Raine          | Ph.D. | Natural Sciences | Martin Ryan Institute, N.U.I. Galway                                                                                   |
| Dr S. Royle          | Ph.D. | Natural Sciences | School of Geography, Queen's University of Belfast, Northern Ireland, U.K.                                             |
| Dr H. Bulkeley       | Ph.D. | Natural Sciences | Dept. of Geography, Durham University, U.K.                                                                            |
| Prof. J. Dodson      | Ph.D. | Natural Sciences | Institute for the Environment, Brunel University, Middlesex, U.K.                                                      |
| Dr D. Simpson        | Ph.D. | Natural Sciences | Herbarium, Royal Botanic Gardens, Kew, Surrey, U.K.                                                                    |
| Prof. J. Grace       | Ph.D. | Natural Sciences | Institute of Atmospheric & Environmental Science, School of Geosciences, University of Edinburgh, Scotland, U.K.       |
| Dr J. Turner         | Ph.D. | Natural Sciences | School of Geography, Earth & Environmental Sciences, University of Birmingham, U.K.                                    |
| Prof. M. Bickle      | Ph.D. | Natural Sciences | Dept. of Earth Sciences, University of Cambridge, U.K.                                                                 |
| Prof. G. Mulcahy     | Ph.D. | Natural Sciences | Dept. of Veterinary Microbiology and Parasitology, Faculty of Veterinary Medicine, U.C.D.                              |

|                                |       |                                      |                                                                                                                            |
|--------------------------------|-------|--------------------------------------|----------------------------------------------------------------------------------------------------------------------------|
| Prof. J. Walsh                 | Ph.D. | Natural Sciences                     | Office of the Vice-President, N.U.I. Maynooth                                                                              |
| Prof. A. Buttimer              | Ph.D. | Natural Sciences                     | Dept. of Geography, U.C.D.                                                                                                 |
| Dr M. Lucas                    | M.Sc. | Natural Sciences                     | School of Biological and Biomedical Sciences, South Road, Durham, U.K.                                                     |
| Prof. A. Roepstorff            | Ph.D. | Natural Sciences                     | Danish Centre for Experimental Parasitology, The Royal Veterinary and Agricultural University, Frederiksberg, Denmark      |
| Prof. M. Heffernan             | Ph.D. | Natural Sciences                     | School of Geography, The University of Nottingham, U.K.                                                                    |
| Herr Dr Prof. P. Schmid-Hempel | Ph.D. | Natural Sciences                     | Experimentelle Okologie, Universitat Strasse, Zurich, Switzerland                                                          |
| Dr J. Walsh                    | Ph.D. | Natural Sciences                     | School of Geological Sciences, U.C.D.                                                                                      |
| Dr R. McDonald                 | Ph.D. | Natural Sciences                     | School of Biological Sciences, Queen's University of Belfast, Northern Ireland, U.K.                                       |
| Dr M. Molloy                   | M.Sc. | Nursing and Midwifery Studies        | Dept. of Rheumatology, Cork University College                                                                             |
| Prof. J. Seymour               | Ph.D. | Nursing and Midwifery Studies        | School of Nursing, University of Nottingham, U.K.                                                                          |
| Prof. P. Bradshaw              | Ph.D. | Nursing and Midwifery Studies        | Dept. of Health, Social Work and Community Studies, School of Human and Health Sciences, University of Huddersfield, U.K.  |
| Prof. A. Jager                 | Ph.D. | Pharmacy and Pharmaceutical Sciences | Dept. of Medicinal Chemistry (Pharmacognosy), The Danish University of Pharmaceutical Sciences, Copenhagen, Denmark        |
| Prof. P. Houghton              | Ph.D. | Pharmacy and Pharmaceutical Sciences | Dept. of Pharmacy, King's College London, U.K.                                                                             |
| Prof. I. de Esch               | Ph.D. | Pharmacy and Pharmaceutical Sciences | Dept. of Pharmacochemistry, Medicinal Chemistry Group, Vrije Universiteit Amsterdam, The Netherlands                       |
| Dr M. Shaffer                  | Ph.D. | Physics                              | Dept. of Chemistry, Imperial College London, U.K.                                                                          |
| Prof. R. Mundt                 | Ph.D. | Physics                              | Max-Planck-Institut fur Astronomie, Heidelberg, Germany                                                                    |
| Prof. T. King                  | Ph.D. | Physics                              | Laser Photonics Research Group, Dept. of Physics and Astronomy, University of Manchester, U.K.                             |
| Dr E. McGlynn                  | M.Sc. | Physics                              | School of Physical Sciences, D.C.U.                                                                                        |
| Prof. D. Buckley               | M.Sc. | Physics                              | Chair of Physics, University of Limerick                                                                                   |
| Prof. J. Bally                 | Ph.D. | Physics                              | Centre for Astrophysics and Space Astronomy, Dept. of Astrophysical and Planetary Sciences, University of Colorado, U.S.A. |
| Prof. B. Graham                | Ph.D. | Physics                              | Dept. of Physics and Astronomy, Queen's University of Belfast, Northern Ireland, U.K.                                      |
| Prof. I. Ledoux-Rak            | Ph.D. | Physics                              | Laboratoire de Photonique Quantique et Moleculaire, Institut d'Alembert - Ecole Normale Superieure de Cachan, France       |
| Prof. A. Schuhl                | Ph.D. | Physics                              | Laboratoire de Physique de Materiaux, Universite H. Poincare, Vandoeuvre les Nancy Cedex, France                           |

|                              |       |            |                                                                                                                                             |
|------------------------------|-------|------------|---------------------------------------------------------------------------------------------------------------------------------------------|
| Prof. M. Skolnick            | Ph.D. | Physics    | Dept. of Physics and Astronomy,<br>University of Sheffield, U.K.                                                                            |
| Prof. E. Emberly             | M.Sc. | Physics    | Dept. of Physics, Simon Fraser University,<br>Burnaby, Canada                                                                               |
| Prof. U. Kohler              | Ph.D. | Physics    | Experimentalphysik IV - AG Oberflächen,<br>Ruhr-Universität Bochum, Germany                                                                 |
| Prof. B. Nadgorny            | Ph.D. | Physics    | Physics Dept., Wayne State University,<br>Detroit, U.S.A.                                                                                   |
| Dr A. Lopez Vazquez de Parga | Ph.D. | Physics    | Condensed Matter Physics Dept., Science<br>Faculty, Universidad Autonoma de Madrid,<br>Spain                                                |
| Dr M. Remskar                | Ph.D. | Physics    | Solid State Physics Department, Jozef<br>Stefan Institute, Ljubljana, Slovenia                                                              |
| Dr F. Elias                  | M.Sc. | Physics    | Matieres et Systemes Complexes, Paris,<br>France                                                                                            |
| Dr A. Brown                  | Ph.D. | Physics    | Center for Astrophysics and Space<br>Astronomy, University of Colorado, U.S.A.                                                              |
| Dr S. Bozhko                 | Ph.D. | Physics    | Institute of Solid State Physics, Russian<br>Academy of Sciences, Moscow, Russia                                                            |
| Dr T. Aste                   | Ph.D. | Physics    | Dept. of Applied Mathematics, Research<br>School of Physical Sciences, The Australian<br>National University, Canberra, Australia           |
| Prof. D. Bradley             | Ph.D. | Physics    | Experimental Solid State Physics Group,<br>Blackett Laboratory, Imperial College<br>London, U.K.                                            |
| Prof. S. Silva               | Ph.D. | Physics    | Advanced Technology Institute, University<br>of Surrey, U.K.                                                                                |
| Prof. J. Rivas Rey           | M.Sc. | Physics    | Applied Physics Department, University of<br>Santiago de Compostela, Spain                                                                  |
| Prof. R. Eason               | M.Sc. | Physics    | Dept. of Physics and Astronomy,<br>University of Southampton, U.K.                                                                          |
| Prof. G. Jansson             | Ph.D. | Psychology | Dept. of Psychology, Uppsala University,<br>Sweden                                                                                          |
| Prof. A. Re                  | Ph.D. | Psychology | Dipartimento di Psicologia, Turin, Italy                                                                                                    |
| Prof. D. Hosking             | Ph.D. | Psychology | Utrechtse School voor Bestuursen<br>Organisatiewetenschap, Utrecht, The<br>Netherlands                                                      |
| Prof. R. Morris              | Ph.D. | Psychology | Head of Neuropsychology, Institute of<br>Psychiatry, King's College London, U.K.                                                            |
| Dr T. Braver                 | Ph.D. | Psychology | Dept. of Experimental Psychology,<br>University of Cambridge, U.K.                                                                          |
| Dr P. Moran                  | Ph.D. | Psychology | School of Psychology, University of<br>Nottingham                                                                                           |
| Prof. H. Flor                | Ph.D. | Psychology | Dept. of Neuropsychology and Clinical<br>Psychology, Ruprecht Karls-University,<br>Central Institute of Mental Health,<br>Mannheim, Germany |
| Prof. P. Halligan            | M.Sc. | Psychology | School of Psychology, Cardiff University,<br>U.K.                                                                                           |
| Prof. S. Lederman            | Ph.D. | Psychology | Dept. of Psychology, Queen's University,<br>Kingston, Ontario, Canada                                                                       |
| Prof. V. Girotto             | Ph.D. | Psychology | Faculty of Arts and Design, University<br>IUAV of Venice, Italy                                                                             |
| Prof. S. Newstead            | Ph.D. | Psychology | School of Psychology, University of<br>Plymouth, U.K.                                                                                       |

|                   |       |                                           |                                                                                                        |
|-------------------|-------|-------------------------------------------|--------------------------------------------------------------------------------------------------------|
| Dr E. O'Hare      | Ph.D. | Psychology                                | School of Psychology, University of Ulster at Jordanstown, Northern Ireland, U.K.                      |
| Prof. M. Husain   | Ph.D. | Psychology                                | Institute of Cognitive Neuroscience, University College London, U.K.                                   |
| Dr G. Mulhern     | Ph.D. | Psychology                                | School of Psychology, Queen's University of Belfast, Northern Ireland, U.K.                            |
| Dr F. Cummins     | Ph.D. | Psychology                                | Dept. of Computer Science, U.C.D.                                                                      |
| Prof. R. Elgie    | Ph.D. | Social Sciences and Philosophy            | School of Law and Government, D.C.U.                                                                   |
| Prof. J. Gunz     | Ph.D. | Social Sciences and Philosophy            | General Institute of Sociology, University of Linz, Austria                                            |
| Prof. V. Borooah  | Ph.D. | Social Sciences and Philosophy            | School of Public Policy, Economics and Law, University of Ulster, Newtownabbey, Northern Ireland, U.K. |
| Dr E. Phimister   | Ph.D. | Social Sciences and Philosophy            | University of Aberdeen Business School, Scotland, U.K.                                                 |
| Prof. A. Sparkes  | Ph.D. | Social Sciences and Philosophy            | School of Sport & Health Sciences, University of Exeter, U.K.                                          |
| Prof. P. Johnson  | Ph.D. | Social Sciences and Philosophy            | Durham Business School, U.K.                                                                           |
| Prof. J. Curtice  | Ph.D. | Social Sciences and Philosophy            | Dept. of Government, University of Strathclyde, Glasgow, Scotland, U.K.                                |
| Prof. P. Rogers   | Ph.D. | Social Sciences and Philosophy            | Dept. of Peace Studies, University of Bradford, U.K.                                                   |
| Dr L. Hubbard     | Ph.D. | Social Sciences and Philosophy            | School of Agricultural, Food and Rural Development, University of Newcastle, U.K.                      |
| Prof. S. Mumford  | Ph.D. | Social Sciences and Philosophy            | Dept. of Philosophy, University of Nottingham, U.K.                                                    |
| Dr J. Ritchie     | Ph.D. | Social Sciences and Philosophy            | Dept. of Philosophy, U.C.D.                                                                            |
| Dr M. Baghrmian   | Ph.D. | Social Sciences and Philosophy            | Dept. of Philosophy, U.C.D.                                                                            |
| Dr G. Kemp        | Ph.D. | Social Sciences and Philosophy            | Dept. of Philosophy, University of Glasgow, Scotland, U.K.                                             |
| Prof. J. Neary    | Ph.D. | Social Sciences and Philosophy            | School of Economics, U.C.D.                                                                            |
| Prof. L. Johnston | Ph.D. | Social Sciences and Philosophy            | Institute of Criminal Justice Studies, University of Portsmouth, U.K.                                  |
| Prof. R. Ohlsson  | Ph.D. | Vice Deanery of Genetics and Microbiology | Dept. of Development & Genetics, Uppsala University, Sweden                                            |
| Dr K. Lundstrom   | Ph.D. | Vice Deanery of Genetics and Microbiology | Bioxtal / Regulon Inc., Epalines, Switzerland                                                          |
| Prof. S. Foster   | Ph.D. | Vice Deanery of Genetics and Microbiology | Dept. of Molecular Biology & Biotechnology, University of Sheffield, U.K.                              |
| Prof. E. Gould    | Ph.D. | Vice Deanery of Genetics and Microbiology | Centre for Ecology & Hydrology, University of Oxford, U.K.                                             |
| Dr J. O'Gara      | Ph.D. | Vice Deanery of Genetics and Microbiology | School of Biomolecular and Biomedical Sciences, U.C.D.                                                 |

|                     |       |                                              |                                                                                                                      |
|---------------------|-------|----------------------------------------------|----------------------------------------------------------------------------------------------------------------------|
| Dr M. Richardson    | Ph.D. | Vice Deanery of Genetics and Microbiology    | Faculty of Biological Sciences, University of Leeds, U.K.                                                            |
| Dr C. Douglas       | Ph.D. | Vice Deanery of Genetics and Microbiology    | Dept. of Oral Pathology, School of Clinical Dentistry, University of Sheffield, U.K.                                 |
| Prof. A. Van Belkum | Ph.D. | Vice Deanery of Genetics and Microbiology    | Dept. of Medical Microbiology and Infectious Diseases, Erasmus University Medical Centre, Rotterdam, The Netherlands |
| Dr J. Cryan         | Ph.D. | Vice Deanery of Genetics and Microbiology    | School of Pharmacology & Therapeutics, U.C.C.                                                                        |
| Prof. M. Stark      | Ph.D. | Vice Deanery of Genetics and Microbiology    | Institute of Biomedical and Life Sciences, University of Glasgow, Scotland, U.K.                                     |
| Dr D. Simpson       | Ph.D. | Vice Deanery of Genetics and Microbiology    | Dept. of Ophthalmology & Vision Science, Queen's University of Belfast, Northern Ireland, U.K.                       |
| Dr C. Condon        | Ph.D. | Vice Deanery of Genetics and Microbiology    | Institut de Biologie Physio-Chimique, Paris, France                                                                  |
| Dr D Keegan         | Ph.D. | Vice Deanery of Genetics and Microbiology    | Harkness Eye Institute, New York, U.S.A.                                                                             |
| Dr B. Kennedy       | Ph.D. | Vice Deanery of Genetics and Microbiology    | School of Biomolecular and Biomedical Sciences, U.C.D.                                                               |
| Prof. J. Green      | Ph.D. | Vice Deanery of Genetics and Microbiology    | Dept. of Molecular Biology & Biotechnology, University of Sheffield, U.K.                                            |
| Dr S. Amor          | Ph.D. | Vice Deanery of Genetics and Microbiology    | Biomedical Primate Research Centre, Rijswijk, The Netherlands                                                        |
| Dr S. Pearce        | Ph.D. | Vice Deanery, Faculty of Arts and Humanities | The Parkes Institute for the Study of Jewish/non-Jewish relations, University of Southampton, U.K.                   |
| Dr V. McNamara      | Ph.D. | Vice Deanery, Faculty of Arts and Humanities | Institute of Theology and Cultures, Dublin                                                                           |



*Appendix 3: Results of Research and Professional Degree Examinations (by degree) for the past three years*

**2005-2006**

|              | Total Examinations | Degree Awarded As It Stands | Minor Corrections Required | Referred For Revisions | Lower Degree Awarded | Failed |
|--------------|--------------------|-----------------------------|----------------------------|------------------------|----------------------|--------|
| Ph.D.        | 223                | 27                          | 185                        | 11                     | 1                    |        |
| M.Sc.        | 36                 | 3                           | 31                         | 1                      |                      |        |
| M.Litt.      | 17                 | 2                           | 15                         | 0                      |                      |        |
| M.D.         | 11                 | 2                           | 9                          | 0                      |                      |        |
| M.Dent.Ch.   | 9                  | 0                           | 9                          | 0                      |                      |        |
| M.A.I.       | 2                  | 0                           | 2                          | 0                      |                      |        |
| <b>Total</b> | <b>298</b>         | <b>34</b>                   | <b>251</b>                 | <b>12</b>              | <b>1</b>             |        |

**2004-2005**

|              | Total Examinations | Degree Awarded As It Stands | Minor Corrections Required | Referred For Revisions | Lower Degree Awarded | Failed |
|--------------|--------------------|-----------------------------|----------------------------|------------------------|----------------------|--------|
| Ph.D.        | 184                | 20                          | 158                        | 6                      |                      |        |
| M.Sc.        | 58                 | 6                           | 50                         | 2                      |                      |        |
| M.Litt.      | 19                 | 6                           | 12                         | 1                      |                      |        |
| M.D.         | 7                  | 1                           | 6                          |                        |                      |        |
| M.Dent.Ch.   | 16                 | 3                           | 13                         |                        |                      |        |
| <b>Total</b> | <b>284</b>         | <b>36</b>                   | <b>239</b>                 | <b>9</b>               |                      |        |

**2003-2004**

|              | Total Examinations | Degree Awarded As It Stands | Minor Corrections Required | Referred For Revisions | Lower Degree Awarded | Failed |
|--------------|--------------------|-----------------------------|----------------------------|------------------------|----------------------|--------|
| Ph.D.        | 170                | 25                          | 143                        | 1                      | 1                    |        |
| M.Sc.        | 38                 | 5                           | 31                         | 2                      |                      |        |
| M.Litt.      | 16                 | 1                           | 13                         | 2                      |                      |        |
| M.D.         | 13                 | 2                           | 10                         | 1                      |                      |        |
| M.Dent.Ch.   | 1                  |                             | 1                          |                        |                      |        |
| M.A.I.       | 2                  |                             | 2                          |                        |                      |        |
| <b>Total</b> | <b>240</b>         | <b>33</b>                   | <b>200</b>                 | <b>6</b>               | <b>1</b>             |        |

Appendix 4: Number of research degrees awarded by Faculty and degree  
(2005-06 includes Sept 2006 and is in bold)

| Faculty                        | Ph.D.             |               |               | M.Sc.             |               |               | M.Litt.           |               |               | M.D.              |               |               | M.Dent.Ch.        |               |               | M.Ch.             |               |               | M.A.I.            |               |               |
|--------------------------------|-------------------|---------------|---------------|-------------------|---------------|---------------|-------------------|---------------|---------------|-------------------|---------------|---------------|-------------------|---------------|---------------|-------------------|---------------|---------------|-------------------|---------------|---------------|
|                                | <b>05/<br/>06</b> | 04<br>/<br>05 | 03<br>/<br>04 | <b>05/<br/>06</b> | 04<br>/<br>05 | 03<br>/<br>04 | <b>05/<br/>06</b> | 04<br>/<br>05 | 03<br>/<br>04 | <b>05/<br/>06</b> | 04<br>/<br>05 | 03<br>/<br>04 | <b>05/<br/>06</b> | 04<br>/<br>05 | 03<br>/<br>04 | <b>05/<br/>06</b> | 04<br>/<br>05 | 03<br>/<br>04 | <b>05/<br/>06</b> | 04<br>/<br>05 | 03<br>/<br>04 |
| Arts (Humanities)              |                   | 22            | 24            |                   |               | 1             |                   | 10            | 5             |                   |               |               |                   |               |               |                   |               |               |                   |               |               |
| Arts (Letters)                 |                   | 25            | 24            |                   |               |               |                   | 2             | 5             |                   |               |               |                   |               |               |                   |               |               |                   |               |               |
| BESS                           |                   | 14            | 10            |                   |               |               |                   | 7             | 5             |                   |               |               |                   |               |               |                   |               |               |                   |               |               |
| ESS                            | <b>34</b>         | 37            | 24            | <b>19</b>         | 29            | 19            |                   |               |               |                   |               |               |                   |               |               |                   |               |               | <b>2</b>          |               | 2             |
| Health Sciences                | <b>26</b>         | 23            | 30            | <b>8</b>          | 13            | 7             |                   |               |               | <b>11</b>         | 7             | 13            | <b>9</b>          | 16            | 1             |                   |               |               |                   |               |               |
| ISE                            |                   |               | 1             |                   |               |               |                   |               |               |                   |               |               |                   |               |               |                   |               |               |                   |               |               |
| Science                        | <b>83</b>         | 63            | 57            | <b>8</b>          | 16            | 11            |                   |               | 1             |                   |               |               |                   |               |               |                   |               |               |                   |               |               |
| Arts & Humanities              | <b>39</b>         |               |               |                   |               |               | <b>11</b>         |               |               |                   |               |               |                   |               |               |                   |               |               |                   |               |               |
| Social & Human Sciences        | <b>41</b>         |               |               |                   |               |               | <b>6</b>          |               |               |                   |               |               |                   |               |               |                   |               |               |                   |               |               |
| Totals: <b>298</b> / 284 / 240 | <b>223</b>        | 184           | 170           | <b>36</b>         | 58            | 38            | <b>17</b>         | 19            | 16            | <b>11</b>         | 7             | 13            | <b>9</b>          | 16            | 1             |                   |               |               | <b>2</b>          |               | 2             |

*Appendix 5: Taught Course External Examiners by School 2005-2006*

| <i>School of Education</i>                                                          | <i>Examiners</i>                                                                                                        | <i>From To</i>             |
|-------------------------------------------------------------------------------------|-------------------------------------------------------------------------------------------------------------------------|----------------------------|
| <b>M.Ed.</b><br>Dr Andrew Loxley/ Ms Elizabeth Oldham                               | Dr T.G. Gaden, National University of Ireland, Dublin, Ireland<br><br>Prof Jeremy Holmer, University of Exeter, England | 2003-2007<br><br>2005-2008 |
| <b>Master in Studies</b><br>Dr Andrew Loxley/ Dr Deirdre O'Neill                    | T. Fleming, National University of Ireland, Maynooth, Ireland                                                           | 2005-2008                  |
| <b>P.G Dip In Service Education</b><br>Dr Andrew Loxley/ Dr Deirdre O'Neill         | A. Hobson, University of Nottingham, England                                                                            | 2005-2008                  |
| <b>H.Dip in Education (Secondary)</b><br>Dr Michael Shevlin                         | Hazel R. Hagger, University of Oxford, England                                                                          | 2004-2007                  |
| <b>M.Sc in Education Guidance Counselling</b><br>Dr Michael L O'Rourke              | Margaret Daly, National University of Ireland, Dublin, Ireland                                                          | 2005-2007                  |
| <b>M.Sc in Educational Management</b><br>Dr Seamus McGuinness                       | Dr Reg North, University of Ulster, Northern Ireland                                                                    | 2002-2005                  |
| <b>M.Sc./P.Grad Dip in I.T. in Education</b><br>Mr Brendan Tangney                  | Prof Tony Van Der Kuyl, University of Edinburgh, Scotland                                                               | 2005-2008                  |
| <b>M.Sc Science Education</b><br>Dr Philip Matthews                                 | Prof J.T. Leach, University of Leeds, England                                                                           | 2003-2006                  |
| <b>H.Dip Primary Education</b><br>Dr Damian Murchan                                 | Dr Eugene Wall, University of Limerick, Ireland                                                                         | 2005-2006                  |
|                                                                                     | Dr Maeve Martin, National University of Ireland, Maynooth, Ireland                                                      | 2005-2006                  |
|                                                                                     | Prof R. Burden, University of Exeter, England                                                                           | 2005-2006                  |
| <i>School of English</i>                                                            |                                                                                                                         |                            |
| <b>M.Phil in Anglo Irish Literature</b><br>Prof Terence Brown / Prof Nicholas Grene | Dr A. Roche, National University of Ireland, Dublin, Ireland<br><br>Prof G.J.B Watson, University of Aberdeen, Scotland | 2005-2008<br><br>2005-2008 |
| <b>M.Phil in Creative Writing</b><br>Mr Gerald Dawe                                 | Dr G. Szirtes, Norwich School of Art and Design, England                                                                | 2003-2006                  |
| <b>M.Phil Popular Literature</b><br>Dr Darryl Jones                                 | Dr David Glover, University of Southampton, England                                                                     | 2004-2007                  |
| <i>School of Drama, Film, and Music</i>                                             |                                                                                                                         |                            |
| <b>M.Phil Film Theory and History</b><br>Dr Paula Quigley                           | Professor Martin McLoone, University of Ulster, Northern Ireland                                                        | 2006-2009                  |
| <b>P.Grad Dip/M.Phil. in Music and Media Technologies</b><br>Dr Dermot Furlong      | Dr V. Lazzarini, National University of Ireland, Maynooth, Ireland                                                      | 2005-2008                  |

|                                                                                            |                                                                          |           |
|--------------------------------------------------------------------------------------------|--------------------------------------------------------------------------|-----------|
| <b>M.Phil Theatre and Film Studies</b><br>Prof Brian Singleton                             | Dr Catherine Leeney,<br>University College Dublin,<br>Ireland            | 2005-2008 |
| <i>School of Histories and Humanities</i>                                                  |                                                                          |           |
| <b>M.Phil in Gender and Women's Studies</b><br>Dr Maryann Valiulis                         | Prof Maggie Humm, University<br>of East London, England                  | 2004-2007 |
| <b>M.Phil Irish Art History</b><br>Dr Yvonne Scott                                         | Dr Paula Murphy, National<br>University of Ireland, Dublin,<br>Ireland   | 2004-2007 |
| <b>M.Phil in Medieval History</b><br>Dr Katharine Simms                                    | Professor E. James National<br>University of Ireland, Dublin,<br>Ireland | 2004-2007 |
| <b>M.Phil in Modern Irish History</b><br>Prof. Jane Olymer                                 | Prof Thomas Bartlett,<br>University College Dublin,<br>Ireland           | 2005-2008 |
| <b>M.Phil in Reformation and Enlightenment Studies</b><br>Dr Helga Robinson Hammerstein    | Dr B. Gordon, University of St<br>Andrews, Scotland                      | 2003-2006 |
| <i>School of Languages, Literature, and Cultural Studies</i>                               |                                                                          |           |
| <b>P.Grad Dip. in Old Irish/M.Phil in Early Irish</b><br>Prof Damian McManus               | Dr Maire Ni Mhaonaigh, St<br>Johns College, England                      | 2004-2007 |
| <b>M.Phil/P.Grad Dip in German Literature and<br/>Language Pedagogy</b><br>Dr Gilbert Carr | Prof Helmut Peitsch, University<br>Potsdam, Germany                      | 2004-2007 |
| <b>M.Phil in Literary Translation</b><br>Mr David Parris                                   | Prof M. Cronin, Dublin City<br>University, Ireland                       | 2004-2007 |
| <b>M.Phil in Medieval Language, Literature and Culture</b><br>Dr Tim Jackson               | Dr N. Havelly, University of<br>York, England                            | 2002-2005 |
| <b>M.Phil in Textual and Visual Studies</b><br>Prof David Scott                            | Prof G. R. Rastall, Leeds<br>University, England                         | 2005-2008 |
| <i>School of Law</i>                                                                       |                                                                          |           |
| <b>LL.M.</b><br>Dr Neville Cox                                                             | Prof Niamh Moloney,<br>University of Nottingham,<br>England              | 2003-2006 |
|                                                                                            | Prof W.A. Schabas, National<br>University of Ireland, Galway<br>Ireland  | 2003-2006 |
|                                                                                            | D. Cahill, National University<br>of Ireland, Dublin, Ireland            | 2004-2007 |
| <i>School of Linguistic, Speech and Communication Sciences</i>                             |                                                                          |           |
| <b>M.Sc Clinical Speech and Language Studies<br/>(Dysphagia)</b><br>Dr Margaret Walshe     | Dr Christina H. Smith,<br>University College London,<br>England          | 2004-2007 |
| <b>M.Phil/P.Grad Dip in Linguistics/Applied Linguistics</b><br>Prof John Saeed             | Dr R. Cann, University of<br>Edinburgh, Scotland                         | 2004-2007 |
| <b>M.Phil/P.Grad Dip in Speech and Language<br/>Processing</b><br>Prof John Saeed          | Dr E. Esch, University of<br>Cambridge, England                          | 2003-2006 |
|                                                                                            | Prof O. Engstrand, University<br>of Stockholm, Sweden                    | 2003-2006 |

|                                                                                    |                                                                                |           |
|------------------------------------------------------------------------------------|--------------------------------------------------------------------------------|-----------|
| <i>School of Psychology</i>                                                        |                                                                                |           |
| <b>D.Clin.Psych</b><br>Dr Kevin Tierney                                            | P. de Silva, Kings College,<br>England                                         | 2003-2006 |
| <b>M.Sc in Counselling Psychology</b><br>Dr Ladislav Timulak                       | Dr Jennifer E. Wilson, London<br>Guild Hall University, England                | 2003-2006 |
|                                                                                    | Prof John McLeod, University<br>of Abertay, Scotland                           | 2006-2009 |
| <b>P.G Dip in Clinical Supervision</b><br>Dr Rita Honan/ Ms Mary Creaner           | Simon du Plock, Regent's<br>College London, England                            | 2004-2007 |
| <b>H. Dip in Psychology</b><br>Dr Jean Quigley                                     | To be Appointed                                                                | 2005-2008 |
| <i>School of Social Science and Philosophy</i>                                     |                                                                                |           |
| <b>Integrated Doctorate in Political Science<br/>(M.Phil/PhD)</b><br>Dr Ken Benoit | Prof C. Van de Eijk University<br>of Amsterdam, Netherlands                    | 2004-2007 |
| <b>M.Sc. in Applied Social Research</b><br>Dr Evelyn Mahon                         | Prof Bernadette Hayes,<br>Queens University, Northern<br>Ireland               | 2004-2007 |
| <b>M.Sc in Economic Policy Studies</b><br>Frances O Toole                          | Prof Paul Teague, Queens<br>University Belfast, Northern<br>Ireland            | 2005-2007 |
|                                                                                    | Dr Paul Gorecki, The<br>Competition Authority, Dublin                          | 2005-2007 |
|                                                                                    | Prof Brendan Whelan, The<br>Economic and Social Research<br>Institute, Ireland | 2005-2007 |
| <b>M.Sc in Economics</b><br>Dr Paul Walsh                                          | Professor J Sutton, Covenor<br>London School of Economics,<br>England          | 2004-2007 |
| <b>M.Phil in Ethnic and Racial Studies</b><br>Dr Ronit Lentin                      | Prof Les Back, University of<br>London, England                                | 2004-2007 |
| <b>M.Phil Psychoanalytic Studies</b><br>Dr Ross Skelton                            | Prof J. Holmes, North Devon<br>Hospital, England                               | 2004-2007 |
| <i>School of Social Work and Social Policy</i>                                     |                                                                                |           |
| <b>Master in Social Work</b><br>Dr Trish Walsh                                     | Dr Mary E. Collins, School of<br>Social Work, Boston<br>University, USA        | 2005-2008 |
| <b>P.Grad Dip/M.Sc. in Child Protection and Welfare</b><br>Dr Helen Buckley        | Prof N.A. Parton, University of<br>Huddersfield, England                       | 2004-2007 |
| <b>M.Sc. in Drug and Alcohol Policy</b><br>Dr Shane Butler                         | Dr Christine Franey, Imperial<br>College London, England                       | 2004-2007 |
| <b>M.Phil/P.Grad Dip Social Work Research</b><br>Prof Robbie Gilligan              | To be Appointed                                                                | 2005-2008 |
| <i>Irish School of Ecumenics</i>                                                   |                                                                                |           |
| <b>P.Grad Dip/M.Phil. (Ecum.)</b><br>Dr A. Pierce                                  | Prof W. Ustorff, University of<br>Birmingham, England                          | 2005-2008 |
|                                                                                    | Dr Ivana Noble, Ecumenical<br>Institute, ETF, Czech Republic                   | 2005-2008 |
| <b>M.Phil/P.Grad Dip in Peace Studies</b><br>Dr I. Atack                           | Dr Karin M. Fierke, Queens<br>University Belfast, Northern<br>Ireland          | 2003-2006 |
|                                                                                    |                                                                                | 2005-2008 |

|                                                                                                                                       |                                                                     |                                |
|---------------------------------------------------------------------------------------------------------------------------------------|---------------------------------------------------------------------|--------------------------------|
|                                                                                                                                       | Dr N. Dower, University of Aberdeen, Scotland                       |                                |
| <b>M.Phil in Reconciliation Studies</b><br>Mr David Tombs                                                                             | Prof J.D. Brewer, University of Aberdeen, Scotland                  | 2004-2007                      |
| <b>P.Grad Dip in Conflict and Dispute Resolution Studies</b><br>Ms Paulyn Marrinan Quinn<br><i>Vice-Deanery of Art and Humanities</i> | Dr R. McGinty, Dept of Politics, University of York, England        | 2004-2007                      |
| <b>Bachelor in Divinity (B.D)</b><br>Prof. Andrew Mayes<br><i>School of Business</i>                                                  | Prof G.J. Brooke, University of Manchester, England                 | 2004-2007                      |
| <b>M.B.A.</b><br>Ms Mary-Rose Greville                                                                                                | R.S. Atkin, University of Pittsburgh, USA                           | 2005-2008                      |
| <b>M.Sc (Mgmt) Business Administration</b><br>Mr T. Drumgoole, Dr M. Fellenz, Mr A. McLaughlin, Dr G. McHugh, Mr J. Quilliam          | Prof P.M. Jackson, University of Leicester, England                 | 2003-2006                      |
| <b>M.Sc (Mgmt) Management Practice</b><br>Dr G. McKechnie                                                                             | Prof B. Obel, Aarhus School of Business, Denmark                    | 2004-2007                      |
| <b>M.Sc (Mgmt) Organisational Behaviour</b><br>Dr G. McKechnie                                                                        | J. McCalman, Ashridge Business School. Hertfordshire, England       | 2003-2006                      |
| <b>M.Sc (Mgmt) Strategic Public Sector</b><br>Dr G. McKechnie                                                                         | Prof P. Beaumont, University of Glasgow, Scotland                   | 2005-2008                      |
| <b>M.Sc (Mgmt) International Business Programme</b><br><i>School of Computer Science and Statistics</i>                               | Dr W.J. Bigoness, Duke University, USA                              | 2005-2008                      |
| <b>M.Sc in Computer Science (Mobile and Ubiquitous Computing)</b><br>Prof Vinny Cahill                                                | Prof Hans Gellersen, University of Lancaster, England               | 2005-2008                      |
| <b>M.Sc in Computer Science (Network and Distributed Systems)</b><br>Dr Siobhan Clarke                                                | Prof S. Shrivastava, University of Newcastle Upon Tyne, England     | 2004-2007                      |
| <b>P.Grad Dip./M.Sc. in Health Informatics</b><br>Ms G Stephens                                                                       | Prof M. Severs, University of Portsmouth, England                   | 2004-2007                      |
| <b>M.Sc/P.Grad Dip Management of Information Systems</b><br>Dr James Anthony                                                          | Prof Tony Moynihan, Dublin City University, Ireland                 | 2003-2006                      |
| <b>M.Sc in Multimedia Systems</b><br>Prof Marie Redmond                                                                               | Professor Angela Woods, National College of Art and Design, Ireland | 2004-2007                      |
| <b>P.Grad Dip Statistics</b><br>Dr Myra O Regan<br><i>School of Engineering</i>                                                       | Dr Kevin Hayes, University of Limerick, Ireland                     | 2005-2006                      |
| <b>M.Sc/P.Grad Dip in Bioengineering</b><br>Dr Ciaran Simms                                                                           | Prof E. Tanner, Queen Mary University of London, England            | 2005-2006 (one year extension) |
| <b>M.Sc. in Civil Engineering</b><br>Mr Laurence Gill                                                                                 | Prof M. Loxham, University of Delft, Netherlands                    | 2004-2007                      |
| <b>M.Sc. Mechanical Engineering Erasmus Mundus</b><br>Prof Henry Rice                                                                 | Prof P. Goransson, Kungliga Tekniska Hogskolan, Sweden              | 2005-2008                      |
| <b>P.Grad Diploma in Applied Building Repair Conservation</b>                                                                         | Ms Aighleann O Shaughnessy, Office of Public Works, Ireland         | 2004-2007                      |

|                                                                                                                |                                                                                                              |                        |
|----------------------------------------------------------------------------------------------------------------|--------------------------------------------------------------------------------------------------------------|------------------------|
| Dr Sara Pavia                                                                                                  |                                                                                                              |                        |
| <b>P.Grad Dip in Construction Law and Contract Administration</b><br>Mr Brian Bromwich                         | Ms Siobhan Kenny, Hussey Fraser Solicitors, 17 Northumberland Road, Ballsbridge, Dublin 4.                   | 2005-2008              |
| <b>P.Grad Dip in Environmental Engineering</b><br>Mr Paul Johnston                                             | M. Rodgers, National University of Ireland, Galway, Ireland                                                  | 2004-2007              |
| <b>P.Grad Dip in Fire Safety Practice (Buildings and Other Structures)</b><br>Dr Trevor Orr                    | Mr Hugh O'Neill, Chief Fire Officer, Dublin Fire Brigade                                                     | 2005-2008              |
| <b>P.Grad Dip in Highway and Geotechnical Engineering</b><br>Dr Eric Farrell<br>(Course not running 2005-2006) | Mr Eugene O Connor, Blackrock, Co Dublin                                                                     | 2004-2007              |
| <b>P.Grad Dip Quality Improvement</b><br>Mr Eamonn Mullins                                                     | Dr Kevin Hayes, University of Limerick, Ireland                                                              | 2005-2006              |
| <b>P.Grad Dip in Project Management</b><br>Dr Trevor Orr                                                       | Mr Frank Lee, Lee McCullough & Partners, 67 Lower Baggot Street Lower, Dublin                                | 2004-2007              |
| <i>School of Mathematics</i>                                                                                   |                                                                                                              |                        |
| <b>M.Sc. in High Performance Computing</b><br>Dr M. Peardon                                                    | Prof Alan Irving, University of Liverpool, England                                                           | 2005-2008              |
| <i>School of Natural Sciences</i>                                                                              |                                                                                                              |                        |
| <b>M.Sc. in Environmental Sciences</b><br>Dr Kenneth Irvine                                                    | Dr J. Sweeney, National University of Ireland, Maynooth, Ireland                                             | 2004-2007              |
| <i>School of Dental Science</i>                                                                                |                                                                                                              |                        |
| <b>M.Dent.Ch. in Oral Medicine and Oral Pathology</b><br>Dr Stephen Flint                                      | Prof S. Porter, University of London, England                                                                | 2003-2006              |
| <b>M.Dent.Ch. in Oral Surgery</b><br>Prof Leo Stassen                                                          | Prof K. Moos, Glasgow Dental Hospital & School, Scotland                                                     | 2005-2008              |
| <b>M.Dent.Ch. in Orthodontics</b><br>Dr Therese Garvey                                                         | Prof F. McDonald, GKT Dental Institute, England                                                              | 2004-2007              |
| <b>M.Dent.Ch. in Paediatric Dentistry</b><br>Dr Anne O'Connell                                                 | Dr Evelyn C. Sheehy, King's College, England                                                                 | 2004-2007              |
| <b>M.Dent.Ch. in Periodontics</b><br>Prof Noel Claffey                                                         | Dr Chris. R. Irwin, Queens University School of Dentistry, Northern Ireland                                  | 2005-2008              |
| <b>M.Dent.Ch. in Prosthodontics</b><br>Prof Brian O'Connell                                                    | D.J. Setchell, University College London, England                                                            | 2003-2006              |
| <b>P.Grad Dip in Clinical Dentistry</b><br>Dr Osama Omer                                                       | Prof Stephen Porter, Eastman Dental Institute, England<br>Prof D.M. Chisholm, University of Dundee, Scotland | 2005-2008<br>2005-2008 |
| <i>School of Medicine</i>                                                                                      |                                                                                                              |                        |
| <b>M.Sc. in Cardiac Rehabilitation</b><br>Prof I. Graham                                                       | Prof J. Perk, Oskarshamn Hospital, Sweden.                                                                   | 2003-2006              |
| <b>M.Sc. in Cardiology</b><br>Dr Niall Mulvihill                                                               | Dr J. Bourke, University of Newcastle upon Tyne, England                                                     | 2003-2006              |
| <b>M.Sc/P.Grad Dip Clinical Chemistry</b><br>Dr Gerard Boran                                                   | Prof P. Mayne, The Children's Hospital, D7, Ireland                                                          | 2005-2008              |

|                                                                                                                             |                                                                                                                                                       |                            |
|-----------------------------------------------------------------------------------------------------------------------------|-------------------------------------------------------------------------------------------------------------------------------------------------------|----------------------------|
| <b>M.Sc Global Health</b><br>Dr Stephen Thomas                                                                              | Dr Tim Ensor, Oxford Policy Management, Oxford, England                                                                                               | 2005-2008                  |
| <b>M.Sc in Health Services Management</b><br>Ms Eilish McAuliffe/Ms Mandy Lee                                               | Prof S.R. Harrison, University of Manchester, England                                                                                                 | 2003-2006                  |
| <b>M.Sc Mammalian Cell Physiology</b><br>Dr Veronica Campbell                                                               | Dr Therese Kinsella, National University of Ireland, Dublin, Ireland                                                                                  | 2004-2007                  |
| <b>M.Sc Medical Imaging</b><br>Ms Bernadette Moran                                                                          | Prof A. Moore, Anglia Polytechnic University, Anglia Ruskin University, England                                                                       | 2005-2008                  |
| <b>M.Sc/P.Grad Dip in Molecular Medicine</b><br>Dr Ross McManus/ Prof Mark Lawler/ Dr Aideen Long/ Dr Yri Volkov            | Dr J. A. Evans, University of Leeds, England                                                                                                          | 2004-2007                  |
| <b>M.Sc in Molecular Pathology</b> (in conjunction with Dublin Institute of Technology)<br>Dr F. Falkiner/ Dr Jacinta Kelly |                                                                                                                                                       | 2005-2008                  |
| Haematology/immunology/transfusion medicine                                                                                 | Prof H.C. Alexander, Queen's University Belfast, Northern Ireland                                                                                     |                            |
| Microbiology                                                                                                                | Prof Martin Cormican, NUI Galway Regional Hospital, Ireland                                                                                           | 2005-2008                  |
| Cellular pathology                                                                                                          | Dr Cecily Quinn, St Vincent's University Hospital, Ireland                                                                                            | 2005-2008                  |
| <b>M.Sc in Occupational Therapy</b><br>Ms Clodagh Nolan                                                                     | Dr Susan Corr, University College Northampton, England                                                                                                | 2003-2006                  |
| <b>M.Sc/P.Grad Dip in Physical Sciences in Medicine</b><br>Dr Neil O'Hare                                                   | J.A. Evans, University of Leeds, England                                                                                                              | 2004-2007                  |
| <b>M.Sc. in Psychoanalytic Psychotherapy</b><br>Ms Nessa Childers                                                           | Prof J. Holmes, University of Exeter, England                                                                                                         | 2004-2007                  |
| <b>P.Grad Dip./M.Sc in Cognitive Psychotherapy</b><br>Dr Tony Bates/ Dr Brian Fitzmaurice. (course not running 2005-2006)   | Dr S. Moorey, King's College, England                                                                                                                 | 2003-2006                  |
| <b>M.Sc/P.Grad Dip in Exercise Physiology</b><br>Dr Stuart Warmington                                                       | M.J. White, University of Birmingham, England                                                                                                         | 2003-2006                  |
| <b>P.Grad Dip Gynaecology and Obstetrics</b><br>Prof Brian Sheppard                                                         | Dr Suresh Tharmaratnam, Queen's University Belfast, Northern Ireland<br><br>Dr Richard de Courcy Wheeler, Daisy Hill Hospital Newry, Northern Ireland | 2003-2006<br><br>2005-2007 |
| <b>P.Grad Dip in Magnetic Resonance Imaging Technology</b><br>Ms Bernadette Moran                                           | Prof A. Moore, Anglia Polytechnic University, Anglia Ruskin University, England                                                                       | 2005-2008                  |
| <b>P.Grad Dip in Nuclear Medicine</b><br>Ms Bernadette Moran                                                                | Mr K Holmes, St Martins College, England                                                                                                              | 2006-2009                  |
| <i>School of Nursing and Midwifery</i>                                                                                      |                                                                                                                                                       |                            |
| <b>P.Grad Dip./M.Sc in Gerontological Nursing</b><br>Ms Marie Therese Cooney                                                | Janet Draper, RCN Institute England                                                                                                                   | 2003-2006                  |



|                                                                                                                                 |                                                                                                                                                                                     |                                        |
|---------------------------------------------------------------------------------------------------------------------------------|-------------------------------------------------------------------------------------------------------------------------------------------------------------------------------------|----------------------------------------|
| <b>P.Grad Dip/M.Sc Mental Health</b><br>Mr Michael Brennan                                                                      | Dr Patrick Callaghan, City University, England                                                                                                                                      | 2005-2008                              |
| <b>M.Sc. in Midwifery</b><br>Dr Elizabeth Curtis/ Dr Richard Redmond                                                            | Gwendolen Bradshaw, University of Bradford, England                                                                                                                                 | 2003-2006                              |
| <b>M.Sc in Nursing</b><br>Dr Elizabeth Curtis/ Dr Richard Redmond                                                               | Prof Melanie Jasper, Canterbury Christ Church University College, England                                                                                                           | 2003-2006                              |
| <b>P.Grad Dip in Clinical Health Sciences Education</b><br>Dr Sharon O'Donnell/ Dr Richard Redmond/ Ms Elizabeth Curtis         | Mr William Kelly, University of Ulster, Northern Ireland                                                                                                                            | 2003-2006                              |
| <b>P.Grad Dip in Midwifery (Drogheda)</b>                                                                                       | Nora Mansell Quirke, College of Midwifery, St Finbars, Ireland                                                                                                                      | 2005-2008                              |
| <b>P.Grad Dip in Midwifery ( Rotunda)</b><br>Mr Colm O Boyle                                                                    | Colette McIntosh Miller, University of Stirling, Scotland                                                                                                                           | 2003-2006                              |
| <b>P.Grad Dip in Professional Midwifery Studies/ Professional Nursing Studies</b><br>Ms M Corry                                 | J.A Fulton, University of Sunderland, England                                                                                                                                       | 2003-2006                              |
| <b>P.Grad Dip in Oncological Nursing</b><br>Ms Mary Mooney                                                                      | Deborah Fitzsimons, University of Wales, Wales                                                                                                                                      | 2004-2007                              |
| <b>P.Grad Dip in Specialist Nursing</b><br><i>CCU, Haematology, Perioperative</i>                                               | Rita Smith, National University of Ireland, Dublin, Ireland                                                                                                                         | 2003-2006                              |
| <b>P.Grad Dip in Special Nursing</b><br>Ms AnneMarie Corroon<br><i>(dementia care for persons with intellectual disability)</i> | Prof P. McCallion, University of Albany, USA                                                                                                                                        | 2003-2006                              |
| <b>P.Grad Dip in Specialist Nursing</b><br>Ms Anne-Marie Corroon/ Ms Mary Mooney<br><i>A&amp;E, Orthopaedics, ICU, Renal</i>    | Toni McAloon, University of Ulster, Northern Ireland                                                                                                                                | 2003-2006                              |
| <b>P.Grad Dip in Specialist Nursing (haematology)</b>                                                                           | Rita Smith, National University of Ireland, Dublin, Ireland                                                                                                                         | 2004-2007                              |
| <i>(promoting enablement in persons with a physical disability)</i>                                                             | Sally Davis, Oxford Brookes University, England                                                                                                                                     | 2004-2007                              |
| <b>P.Grad Dip in Specialist Nursing</b><br><i>(care of the person with severe and enduring mental illness)</i>                  | Keith Edwards, Buckinghamshire Chilterns University College, England                                                                                                                | 2004-2007                              |
| <b>P.Grad Dip in Paediatric Nursing</b><br>Ms M. Mooney                                                                         | Dr Eileen Savage, National University of Ireland, Cork, Ireland                                                                                                                     | 2003-2006                              |
| <i>School of Pharmacy and Pharmaceutical Sciences</i>                                                                           |                                                                                                                                                                                     |                                        |
| <b>M.Sc in Hospital Pharmacy</b><br>Ms Niamh McMahon                                                                            | Prof Jonathan Cooke, Dept of Pharmacy, South Manchester University Hospital, NHS Trust Withington Hospital, England<br><br>Prof John Graham Davies, University of Brighton, England | Jan04-Dec 05<br><br>Jan 2006- Dec 2009 |
| <b>M.Sc/P.Grad Dip in Pharmaceutical Analysis</b><br>Dr John Clancy                                                             | Dr J.M. Morris, Irish Medicines Board, Ireland                                                                                                                                      | 2005-2008                              |
| <b>M.Sc/P.Grad Dip in Pharmaceutical Technology</b><br>Dr Anne Marie Healy                                                      | Prof G. Martin, Kings College London, England                                                                                                                                       | 2004-2007                              |

|                                                                                         |                                                                           |           |
|-----------------------------------------------------------------------------------------|---------------------------------------------------------------------------|-----------|
| <b>P.Grad Dip./M.Sc. in Community Pharmacy</b><br>Dr Sheila Ryder                       | Prof David K. Luscombe,<br>Cardiff University, England                    | 2005-2006 |
| <b>P.Grad Dip/M.Sc in Pharmaceutical Manufacturing Technology</b><br>Ms Lorna Loughrey  | Prof J Newton, University of<br>London, England                           | 2002-2005 |
|                                                                                         | Prof A. David Woolfson,<br>Queens University Belfast,<br>Northern Ireland | 2005-2008 |
| <b>M.Sc./P.Grad Dip in Pharmaceutical Medicine</b><br>Dr MaryJo McAvin/ Dr Mary Teeling | Prof T.J. Walley, University of<br>Liverpool, England                     | 2003-2006 |

Appendix 6: Postgraduate Taught Course Applications and Admissions Data 2006-07

| Faculty of Arts and Humanities                                   | Quota | Total Applications | No of non - EU applicants | Male/Female applicants | Total Offers | % offer to applications | Reg Students Year 1 |
|------------------------------------------------------------------|-------|--------------------|---------------------------|------------------------|--------------|-------------------------|---------------------|
| <b>School of Drama, Film and Music</b>                           |       |                    |                           |                        |              |                         |                     |
| Master in Philosophy in Irish Theatre Studies                    | 5     | 3                  | 3                         | 2 / 1                  | 1            | 33%                     | Not running         |
| Master in Philosophy in Film and History                         |       | 18                 | 5                         | 8 / 10                 | 13           | 72%                     | 9                   |
| Master in Philosophy in Theatre and Performance                  |       | 11                 | 7                         | 3 / 8                  | 9            | 82%                     | 6                   |
| Postgraduate Diploma in Music & Media Technologies               | 20    | 47                 | 5                         | 39 / 8                 | 22           | 47%                     | 16                  |
| <b>School of English</b>                                         |       |                    |                           |                        |              |                         |                     |
| Master in Philosophy in Creative Writing                         | 14    | 70                 | 20                        | 22 / 48                | 23           | 33%                     | 14                  |
| Master in Philosophy in Anglo Irish Literature                   | 15    | 53                 | 27                        | 17 / 36                | 34           | 64%                     | 17                  |
| Master in Philosophy in Popular Literature                       | 16    | 49                 | 13                        | 13 / 36                | 26           | 53%                     | 19                  |
| <b>School of Histories and Humanities</b>                        |       |                    |                           |                        |              |                         |                     |
| Master in Philosophy in Gender and Women's Studies               |       | 20                 | 7                         | 0 / 20                 | 14           | 70%                     | 6                   |
| Master in Philosophy in Irish Art History                        |       | 21                 | 2                         | 1 / 20                 | 13           | 62%                     | 12                  |
| Master in Philosophy in Medieval History                         |       | 16                 | 4                         | 6 / 10                 | 10           | 63%                     | 8                   |
| Master in Philosophy in Modern Irish History                     |       | 27                 | 6                         | 10 / 17                | 17           | 63%                     | 10                  |
| Master in Philosophy in Reformation & Enlightenment Studies      |       | 18                 | 7                         | 8 / 10                 | 13           | 72%                     | 10                  |
| <b>School of Languages, Literature and Cultural Studies</b>      |       |                    |                           |                        |              |                         |                     |
| Master in Philosophy in Early Irish                              | None  | 2                  | 1                         | 0 / 2                  | 2            | 100%                    | 0                   |
| Master in Philosophy in German Literature with Language Pedagogy | 10    | 4                  | 1                         | 0 / 4                  | 4            | 100%                    | 0                   |

|                                                                     |              |                           |                                  |                    |                     |                                |                            |
|---------------------------------------------------------------------|--------------|---------------------------|----------------------------------|--------------------|---------------------|--------------------------------|----------------------------|
| Master in Philosophy in Medieval Language, Literature and Culture   | 10           | 15                        | 8                                | 4 / 11             | 12                  | 80%                            | 4                          |
| Master in Philosophy Visual and Textual Studies                     | 8            | 13                        | 0                                | 2 / 11             | 8                   | 62%                            | 6                          |
| Master in Philosophy in Comparative Literature                      | 8/20         | 6                         | 2                                | 1 / 5              | 6                   | 100%                           | 3                          |
| Master in Philosophy in Literary Translation                        | 20           | 22                        | 4                                | 6 / 16             | 19                  | 86%                            | 13                         |
| <b>School of Linguistic, Speech and Communication Sciences</b>      |              |                           |                                  |                    |                     |                                |                            |
| Master in Science in Clinical Speech & Language Studies (Dysphagia) |              | 16                        | 1                                | 1 / 15             | 14                  | 88%                            | 13                         |
| Master in Philosophy in Applied Linguistics                         |              | 18                        | 4                                | 4 / 14             | 16                  | 89%                            | 13                         |
| Master in Philosophy in Linguistics                                 |              | 20                        | 5                                | 7 / 13             | 13                  | 65%                            | 6                          |
| Master in Philosophy in Speech & Language Processing                |              | 8                         | 1                                | 0 / 8              | 6                   | 75%                            | 4                          |
| Master in Science in Clinical Speech and Language Studies           |              | 9                         | 0                                | 0 / 2              | 6                   | 67%                            | 13                         |
| <b>Faculty Totals</b>                                               |              | <b>486</b>                |                                  |                    | <b>301</b>          |                                | <b>202</b>                 |
| <b>Irish School of Ecumenics</b>                                    | <b>Quota</b> | <b>Total Applications</b> | <b>No of non - EU applicants</b> | <b>Male/Female</b> | <b>Total Offers</b> | <b>% offer to applications</b> | <b>Reg Students Year 1</b> |
| <b>Irish School of Ecumenics</b>                                    |              |                           |                                  |                    |                     |                                |                            |
| Master in Philosophy in Ecumenics                                   |              | 18                        | 7                                | 6 / 12             | 16                  | 89%                            | 16                         |
| Master in Philosophy in Peace Studies                               |              | 89                        | 45                               | 33 / 55            | 70                  | 79%                            | 46                         |
| Master in Philosophy in Reconciliation Studies                      |              | 21                        | 12                               | 8 / 13             | 18                  | 86%                            | 10                         |
| Postgraduate Diploma in Conflict & Dispute Resolution Studies       |              | 19                        | 1                                | 7 / 12             | 18                  | 95%                            | 14                         |
| <b>Faculty Totals</b>                                               |              | <b>147</b>                |                                  |                    | <b>122</b>          |                                | <b>86</b>                  |

| <b>Faculty of Engineering and Systems Sciences</b>                     | <b>Quota</b> | <b>Total Applications</b> | <b>No of non - EU applicants</b> | <b>Male/Female</b> | <b>Total Offers</b> | <b>% offer to applications</b> | <b>Reg Students Year 1</b> |
|------------------------------------------------------------------------|--------------|---------------------------|----------------------------------|--------------------|---------------------|--------------------------------|----------------------------|
| <b>School of Computer Science and Statistics</b>                       |              |                           |                                  |                    |                     |                                |                            |
| Master in Science in Computer Science (Networks & Distributed Systems) |              | 75                        | 17                               | 61 / 14            | 42                  | 56%                            | 14                         |
| Master in Science in Multimedia Systems                                |              | 62                        | 6                                | 33 / 29            | 38                  | 61%                            | 26                         |
| Master in Science in IT in Education                                   |              | 7                         | 0                                | 1 / 6              | 6                   | 86%                            | 0                          |
| Master in Science in Management of Information Systems                 |              | 83                        | 3                                | 59 / 11            | 52                  | 63%                            | 35                         |
| Master in Science in Mobile and Ubiquitous Computing                   |              | 50                        | 16                               | 37/13              | 39                  | 78%                            | 18                         |
| Master in Science in Technology and Learning                           |              | 35                        | 0                                | 13 / 22            | 30                  | 86%                            | 25                         |
| Postgraduate Diploma in Computer Science (Ubiquitous Computing)        |              | 2                         | 0                                | 1 / 1              | 2                   | 100%                           | 1                          |
| Postgraduate Diploma in Health Informatics                             |              | 36                        | 5                                | 12 / 24            | 30                  | 76%                            | 23                         |
| Postgraduate Diploma in Statistics                                     |              | 121                       | 6                                | 52 / 69            | 108                 | 89%                            | 102                        |
| Postgraduate Diploma in Quality Improvement                            |              | 1                         | 0                                | 1 / 0              | 1                   | 100%                           | Not running                |
| <b>School of Engineering</b>                                           |              |                           |                                  |                    |                     |                                |                            |
| Master in Science in Bioengineering                                    | 15           | 21                        | 4                                | 12 / 6             | 18                  | 86%                            | 11                         |
| Master in Science in Integrated Systems Design                         |              | 1                         | 1                                | 1 / 0              | 0                   | 0%                             | Not running                |
| Master in Engineering                                                  |              | 1                         | 0                                | 0 / 1              | 0                   | 0%                             | 0                          |
| Master in Engineering (Recurrent Education)                            | 5            | 1                         | 0                                | 0 / 1              | 1                   | 100%                           | 2                          |
| Master in Science in Civil Engineering                                 | 25           | 47                        | 8                                | 35 / 12            | 32                  | 68%                            | 26                         |
| Master in Science in Mechanical Engineering (ERASMUS MUNDUS)           | 9            | 6                         | 5                                | 6 / 0              | 5                   | 83%                            | 4                          |
| Postgraduate Diploma in Applied Building Repair & Conservation         | 20           | 21                        | 0                                | 13 / 8             | 18                  | 86%                            | 16                         |
| Postgraduate Diploma in Construction Law & Contract Admin              | 26           | 28                        | 1                                | 23 / 5             | 25                  | 89%                            | 24                         |
| Postgraduate Diploma in Environmental Engineering                      | 35           | 45                        | 2                                | 30 / 15            | 43                  | 96%                            | 33                         |

|                                                                      |              |                           |                                  |                    |                     |                                |                            |
|----------------------------------------------------------------------|--------------|---------------------------|----------------------------------|--------------------|---------------------|--------------------------------|----------------------------|
| Postgraduate Diploma in Fire Safety Practice                         | 30           | 31                        | 0                                | 27 / 4             | 29                  | 94%                            | 29                         |
| Postgraduate Diploma in Highway and Geotechnical Engineering         |              | 1                         | 0                                | 1 / 0              | 1                   | 100%                           | Not running                |
| Postgraduate Diploma in Project Management                           | 80           | 100                       | 1                                | 83 / 17            | 93                  | 93%                            | 76                         |
| <b>Faculty Totals</b>                                                |              | <b>775</b>                |                                  |                    | <b>613</b>          |                                | <b>465</b>                 |
| <b>Faculty of Health Sciences</b>                                    | <b>Quota</b> | <b>Total Applications</b> | <b>No of non - EU applicants</b> | <b>Male/Female</b> | <b>Total Offers</b> | <b>% offer to applications</b> | <b>Reg Students Year 1</b> |
| <b>School of Dental Science</b>                                      |              |                           |                                  |                    |                     |                                |                            |
| Master in Dental Surgery                                             | 18           | 17                        | 2                                | 11 / 6             | 6                   | 35%                            | 5                          |
| Postgraduate Diploma in Clinical Dentistry                           |              | 28                        | 3                                | 9 / 19             | 24                  | 86%                            |                            |
| <b>School of Medicine</b>                                            |              |                           |                                  |                    |                     |                                |                            |
| Master in Science in Health Services Management                      |              | 27                        | 0                                | 5 / 22             | 25                  | 93%                            | 23                         |
| Master in Science in Molecular Medicine (Health Sciences)            |              | 34                        | 7                                | 18 / 16            | 30                  | 88%                            | 17                         |
| Master in Science in Psychoanalytic Psychotherapy                    |              | 1                         | 0                                | 0 / 1              | 0                   | 0%                             | 0                          |
| Master in Science in Cardiac Rehabilitation                          |              | 11                        | 1                                | 0 / 11             | 9                   | 82%                            | 6                          |
| Master in Science in Mammalian Cell Physiology                       |              | 5                         | 1                                | 2 / 3              | 1                   | 20%                            | 1                          |
| Master in Science in Neuroscience                                    |              | 11                        | 1                                | 4 / 7              | 10                  | 91%                            | 11                         |
| Master in Science in Occupational Therapy                            |              | 8                         | 2                                | 3 / 5              | 6                   | 75%                            | 4                          |
| Master in Science in Molecular Pathology                             |              | 32                        | 1                                | 5 / 27             | 28                  | 88%                            | 27                         |
| Master in Philosophy in Psychoanalytic Studies                       |              | 13                        | 0                                | 3 / 10             | 11                  | 85%                            | 9                          |
| Master in Science in Cardiology                                      |              | 3                         | 1                                | 1 / 2              | 0                   | 0%                             | 0                          |
| Master in Science in Child & Adolescent Psychoanalytic Psychotherapy |              | 2                         | 0                                | 0 / 2              | 0                   | 0%                             | 0                          |
| Master in Science in Clinical Chemistry                              |              | 25                        | 0                                | 4 / 21             | 15                  | 60%                            | 6                          |
| Master in Science in Global Health                                   |              | 40                        | 22                               | 12 / 28            | 33                  | 83%                            | 18                         |
| Master in Science in Molecular Medicine (HRB)                        |              | 7                         | 0                                | 2 / 5              | 6                   | 86%                            | 6                          |
| Master in Science in Neuroscience                                    |              | 7                         | 1                                | 3 / 4              | 5                   | 71%                            | 0                          |

|                                                              |      |    |    |         |    |      |    |
|--------------------------------------------------------------|------|----|----|---------|----|------|----|
| Master in Science in Pharmaceutical Medicine                 |      | 5  | 0  | 2 / 3   | 4  | 80%  | 4  |
| Master in Science in Physical Sciences in Medicine           |      | 1  | 0  | 0 / 1   | 0  | 0%   | 0  |
| Master in Science in Sports Medicine                         |      | 12 | 4  | 5 / 7   | 10 | 83%  | 7  |
| Postgraduate Diploma in Exercise Physiology                  |      | 14 | 1  | 5 / 9   | 13 | 93%  | 6  |
| Postgraduate Diploma in Cognitive Psychotherapy              |      | 22 | 0  | 6/16    | 4  | 18%  | 13 |
| Postgraduate Diploma in Gynaecology & Obstetrics             |      | 33 | 28 | 8 / 25  | 24 | 73%  | 11 |
| Postgraduate Diploma in Molecular Medicine                   |      | 5  | 1  | 2 / 3   | 4  | 80%  | 3  |
| Postgraduate Diploma in Nuclear Medicine                     |      | 14 | 1  | 3 / 11  | 10 | 71%  | 9  |
| Postgraduate Diploma in Pharmaceutical Medicine              |      | 8  | 0  | 3 / 5   | 8  | 100% | 4  |
| <b>School of Nursing and Midwifery</b>                       |      |    |    |         |    |      |    |
| Master in Science in Midwifery                               | None | 9  | 1  | 0 / 9   | 3  | 33%  | 3  |
| Master in Science in Nursing                                 | None | 36 | 4  | 3 / 33  | 20 | 56%  | 14 |
| Master in Science in Gerontological Nursing                  | 20   | 11 | 0  | 0 / 11  | 5  | 45%  | 8  |
| Master in Science in Mental Health                           | 30   | 32 | 0  | 6 / 7   | 30 | 94%  | 30 |
| Higher Diploma in Children's Nursing (R.C.N.)                | 15   | 14 | 1  | 0 / 14  | 13 | 93%  | 14 |
| Postgraduate Diploma in Clinical Health Sciences Education   | None | 8  | 0  | 1 / 7   | 1  | 13%  | 2  |
| Postgraduate Diploma in Gerontological Nursing               | n/a  | 3  | 2  | 0 / 3   | 0  | 0%   | 0  |
| Postgraduate Diploma in Midwifery                            | 60   | 57 | 2  | 0 / 57  | 57 | 100% | 53 |
| Postgraduate Diploma in Oncological Nursing                  | 20   | 20 | 0  | 0 / 20  | 20 | 100% | 12 |
| Postgraduate Diploma in Paediatric Nursing                   | n/a  | 8  | 0  | 0 / 8   | 8  | 100% | 8  |
| Postgraduate Diploma in Specialist Nursing                   | 90   | 55 | 0  | 12 / 43 | 51 | 93%  | 51 |
| <b>School of Pharmacy and Pharmaceutical Sciences</b>        |      |    |    |         |    |      |    |
| Master in Science in Pharmaceutical Analysis                 |      | 12 | 3  | 7 / 5   | 11 | 92%  | 7  |
| Master in Science in Pharmaceutical Technology               |      | 5  | 1  | 3 / 2   | 0  | 0%   | 0  |
| Master in Science in Community Pharmacy                      |      | 5  | 0  | 0 / 5   | 5  | 100% | 5  |
| Master in Science in Hospital Pharmacy                       |      | 10 | 1  | 3 / 7   | 9  | 90%  | 0  |
| Master in Science in Pharmaceutical Manufacturing Technology |      | 14 | 1  | 5 / 9   | 13 | 93%  | 3  |

|                                                                 |              |                           |                                  |                    |                     |                                |                            |
|-----------------------------------------------------------------|--------------|---------------------------|----------------------------------|--------------------|---------------------|--------------------------------|----------------------------|
| Postgraduate Diploma in Community Pharmacy                      |              | 7                         | 0                                | 0 / 7              | 7                   | 100%                           | 5                          |
| Postgraduate Diploma in Pharmaceutical Manufacturing Technology |              | 27                        | 1                                | 11 / 16            | 25                  | 93%                            | 23                         |
| Postgraduate Diploma in Pharmaceutical Technology               |              | 5                         | 1                                | 3 / 2              | 1                   | 20%                            | 0                          |
| <b>Faculty Totals</b>                                           |              | <b>723</b>                |                                  |                    | <b>565</b>          |                                | <b>428</b>                 |
| <b>Faculty of Social and Human Sciences</b>                     | <b>Quota</b> | <b>Total Applications</b> | <b>No of non - EU applicants</b> | <b>Male/Female</b> | <b>Total Offers</b> | <b>% offer to applications</b> | <b>Reg Students Year 1</b> |
| <b>School of Business</b>                                       |              |                           |                                  |                    |                     |                                |                            |
| Master in Business Administration                               | 30           | 47                        | 28                               | 36 / 11            | 39                  | 83%                            | 23                         |
| Master in Science (Management)                                  | 15           | 12                        | 1                                | 6 / 6              | 10                  | 83%                            | 9                          |
| Master in Science (Management) in Business Administration       |              | 2                         | 0                                | 2 / 0              | 1                   | 50%                            | 8                          |
| Master in Science (Management) in International Business        |              | 3                         | 1                                | 3 / 0              | 1                   | 33%                            | 0                          |
| Master in Science (Management) in Organisational Behaviour      | 33           | 1                         | 0                                | 1 / 0              | 1                   | 100%                           | 0                          |
| Postgraduate Diploma in Management                              |              | 1                         | 0                                | 1 / 0              | 1                   | 100%                           | 1                          |
| <b>School of Education</b>                                      |              |                           |                                  |                    |                     |                                |                            |
| Master in Education                                             |              | 114                       | 10                               | 41/73              | 106                 | 93%                            | 73                         |
| Higher Diploma in Education                                     |              | 175                       | 2                                | 50 / 125           | 160                 | 91%                            | 129                        |
| Higher Diploma in Education (Primary Teaching)                  |              | 84                        | 0                                | 13 / 71            | 84                  | 100%                           | 87                         |
| Master in Science in Educational Guidance and Counselling       |              | 27                        | 2                                | 7 / 20             | 24                  | 89%                            | 0                          |
| Master in Science in Educational Management                     |              | 2                         | 0                                | 1 / 1              | 1                   | 50%                            | 0                          |
| Master in Studies (School Leadership)                           |              | 19                        | 0                                | 4 / 15             | 19                  | 100%                           | 17                         |
| Postgraduate Diploma in Technology and Learning                 |              | 1                         | 0                                | 1 / 0              | 1                   | 100%                           |                            |



|                                                           |              |                           |                                  |                    |                     |                                |                            |
|-----------------------------------------------------------|--------------|---------------------------|----------------------------------|--------------------|---------------------|--------------------------------|----------------------------|
| <b>School of Psychology</b>                               |              |                           |                                  |                    |                     |                                |                            |
| Master in Science in Applied Psychology                   |              | 19                        | 0                                | 2 / 17             | 15                  | 79%                            | 21                         |
| Doctoral Degree in Clinical Psychology                    | 12           | 13                        | 0                                | 1 / 12             | 12                  | 92%                            | 12                         |
| Higher Diploma in Psychology                              | 20           | 49                        | 0                                | 16 / 33            | 27                  | 55%                            | 22                         |
| Master in Science in Applied Psychology                   |              | 42                        | 2                                | 5 / 37             | 25                  | 60%                            | 21                         |
| Master in Science in Counseling Psychology                | 20           | 87                        | 8                                | 14 / 73            | 27                  | 31%                            | 18                         |
| Postgraduate Diploma in Clinical Supervision (Psychology) | 8            | 9                         | 0                                | 2 / 7              | 8                   | 89%                            | 8                          |
| <b>School of Law</b>                                      |              |                           |                                  |                    |                     |                                |                            |
| LL.M. (Master in Laws)                                    | 30           | 154                       | 30                               | 69 / 85            | 101                 | 66%                            | 73                         |
| <b>School of Social Sciences and Philosophy</b>           |              |                           |                                  |                    |                     |                                |                            |
| Master in Philosophy in Political Science                 |              | 5                         | 3                                | 5 / 0              | 4                   | 80%                            | 0                          |
| Master in Philosophy in Ethnic & Racial Studies           | 12           | 19                        | 5                                | 6 / 13             | 17                  | 89%                            | 13                         |
| Master in Philosophy in Political Science                 |              | 14                        | 2                                | 11 / 3             | 10                  | 71%                            | 5                          |
| Master in Science in Economics                            | 25           | 64                        | 24                               | 36 / 28            | 47                  | 73%                            | 28                         |
| <b>School of Social Work and Social Policy</b>            |              |                           |                                  |                    |                     |                                |                            |
| Master in Science in Drug and Alcohol Policy              | 12           | 11                        | 0                                | 1 / 10             | 10                  | 91%                            | 10                         |
| Master in Social Work                                     | 20           | 101                       | 12                               | 22 / 79            | 27                  | 27%                            | 22                         |
| Master in Science in Applied Social Research              | 15           | 26                        | 2                                | 4 / 22             | 20                  | 77%                            | 21                         |
| Postgraduate Diploma in Child Protection & Welfare        | 4/12         | 31                        | 1                                | 6 / 25             | 17                  | 55%                            | 15                         |
| <b>Faculty Totals</b>                                     |              | <b>1132</b>               |                                  |                    | <b>815</b>          |                                | <b>636</b>                 |
| <b>Faculty of Science</b>                                 |              |                           |                                  |                    |                     |                                |                            |
|                                                           | <b>Quota</b> | <b>Total Applications</b> | <b>No of non - EU applicants</b> | <b>Male/Female</b> | <b>Total Offers</b> | <b>% offer to applications</b> | <b>Reg Students Year 1</b> |
| <b>School of Natural Sciences</b>                         |              |                           |                                  |                    |                     |                                |                            |
| Master in Science in Environmental Sciences               | 25           | 54                        | 8                                | 17 / 25            | 34                  | 63%                            | 19                         |

|                                                    |    |           |   |        |           |     |             |
|----------------------------------------------------|----|-----------|---|--------|-----------|-----|-------------|
| Master in Science in Biodiversity and Conservation | 25 | 7         | 0 | 3 / 4  | 3         | 43% | Not running |
| <b>School of Mathematics</b>                       |    |           |   |        |           |     |             |
| Master in Science in High Performance Computing    | 20 | 16        | 1 | 10 / 3 | 9         | 56% | 6           |
| <b>Faculty Totals</b>                              |    | <b>77</b> |   |        | <b>46</b> |     | <b>25</b>   |

73.6% of taught course applicants overall are made an offer.

Of the 2465 offers made to taught course applicants, 75 % are currently registered in year 1 of their studies.

Appendix 7: Research applications and admissions data 2006-07.

| Faculty of Arts and Humanities                                 | Total Applications | No. Offers Made and % offers to applications | Yr 1 | Yr 2 | Yr 3 | Yr 4 | Yr 5+ | Total reg students | Masters students Year 3 + | Total registered students 2005 |
|----------------------------------------------------------------|--------------------|----------------------------------------------|------|------|------|------|-------|--------------------|---------------------------|--------------------------------|
| <b>School of Drama Film and Music</b>                          |                    |                                              |      |      |      |      |       |                    |                           |                                |
| Drama                                                          | 14                 | 11 (79%)                                     | 8    | 3    | 5    | 6    | 1     | 23                 | 1                         | 25                             |
| Music                                                          | 10                 | 7 (70%)                                      | 7    | 2    | 6    | 1    | 2     | 18                 | 2                         | 18                             |
| <b>School of English</b>                                       |                    |                                              |      |      |      |      |       |                    |                           |                                |
| English                                                        | 36                 | 18 (50%)                                     | 10   | 6    | 9    | 7    | 16    | 48                 | 2                         | 54                             |
| <b>School of Histories and Humanities</b>                      |                    |                                              |      |      |      |      |       |                    |                           |                                |
| Classics                                                       | 6                  | 4 (67%)                                      | 4    | 5    | 5    | 7    | 1     | 22                 | 1                         | 27                             |
| History                                                        | 36                 | 32 (89%)                                     | 17   | 10   | 12   | 19   | 11    | 69                 | 4                         | 77                             |
| History of Art                                                 | 9                  | 5 (56%)                                      | 4    | 6    | 5    | 3    | 5     | 23                 | 2                         | 21                             |
| Centre for Gender and Women's Studies                          | 7                  | 5 (71%)                                      | 3    | 1    | 4    | 2    | 2     | 12                 | 1                         | 10                             |
| <b>School of Languages, Literature and Cultural Studies</b>    |                    |                                              |      |      |      |      |       |                    |                           |                                |
| French                                                         | 3                  | 3 (100%)                                     | 1    | 4    | 3    |      | 4     | 12                 |                           | 11                             |
| Germanic Studies                                               | 6                  | 5 (83%)                                      | 2    | 3    | 3    | 3    | 0     | 11                 |                           | 10                             |
| Hispanic Studies                                               | 4                  | 3 (75%)                                      | 3    | 4    | 1    | 2    | 1     | 11                 |                           | 9                              |
| Irish & Celtic Languages                                       |                    |                                              | 2    |      | 3    |      | 3     | 8                  | 2                         | 8                              |
| Italian                                                        | 3                  | 3 (100%)                                     | 3    |      | 1    | 1    |       | 5                  | 1                         | 4                              |
| Russian & Slavonic Studies                                     |                    |                                              |      | 2    | 2    |      |       | 4                  | 2                         | 4                              |
| <b>School of Linguistic, Speech and Communication Sciences</b> |                    |                                              |      |      |      |      |       |                    |                           |                                |
| Centre for Language & Communication Studies                    | 4                  | 3 (75%)                                      | 6    | 7    | 8    | 4    | 7     | 32                 | 7                         | 32                             |
| Clinical Speech and Language Studies                           | 3                  | 2 (67%)                                      |      | 2    |      |      |       | 2                  |                           | 1                              |

|                                                   |    |         |   |   |   |   |   |           |  |           |
|---------------------------------------------------|----|---------|---|---|---|---|---|-----------|--|-----------|
| <b><i>Vice-Deanery of Arts and Humanities</i></b> |    |         |   |   |   |   |   |           |  |           |
| Religions & Theology                              | 12 | 5 (42%) | 5 | 2 | 1 | 2 | 4 | <b>14</b> |  | <b>15</b> |

**Faculty Totals** **153** **106(69%)** **57** **314** **25** **326**

|                                  | Total Applications | No. Offers Made and % offers to applications | Yr 1 | Yr 2 | Yr 3 | Yr 4 | Yr 5+ | Total reg students | Masters students Year 3 + | Total registered students 2005 |
|----------------------------------|--------------------|----------------------------------------------|------|------|------|------|-------|--------------------|---------------------------|--------------------------------|
| <b>Irish School of Ecumenics</b> |                    |                                              |      |      |      |      |       |                    |                           |                                |
| Irish School of Ecumenics        | 19                 | 14 (74%)                                     | 12   | 11   | 5    | 1    | 2     | 31                 | 3                         | <b>22</b>                      |

**Faculty Totals**

|                                                         | Total Applications | No. Offers Made and % offers to applications | Yr 1 | Yr 2 | Yr 3 | Yr 4 | Yr 5+ | Total reg students | Masters students Year 3 + | Total registered students 2005 |
|---------------------------------------------------------|--------------------|----------------------------------------------|------|------|------|------|-------|--------------------|---------------------------|--------------------------------|
| <b>Faculty of Engineering and Systems Sciences</b>      |                    |                                              |      |      |      |      |       |                    |                           |                                |
| <b><i>School of Computer Science and Statistics</i></b> |                    |                                              |      |      |      |      |       |                    |                           |                                |
| Computer Sciences                                       | 48                 | 34 (71%)                                     | 34   | 31   | 45   | 25   | 21    | 156                | 19                        | <b>164</b>                     |
| Statistics                                              | 2                  | 2 (100%)                                     | 2    | 2    | 7    | 3    | 2     | 16                 | 3                         | <b>20</b>                      |
| <b><i>School of Engineering</i></b>                     |                    |                                              |      |      |      |      |       |                    |                           |                                |
| Structural & Environmental Engineering                  | 9                  | 5 (56%)                                      | 6    | 14   | 8    | 4    | 11    | 43                 | 2                         | <b>46</b>                      |
| Electronic & Electrical Engineering                     | 13                 | 10 (77%)                                     | 10   | 12   | 4    | 7    | 5     | 38                 | 1                         | <b>43</b>                      |
| Mechanical & Manufacturing Engineering                  | 21                 | 17 (81%)                                     | 14   | 14   | 15   | 10   | 5     | 58                 | 6                         | <b>55</b>                      |

**Faculty Totals** **93** **68 (73%)** **44** **311** **31** **328**

| <b>Faculty of Health Sciences</b>             | <b>Total Applications</b> | <b>No. Offers Made and % offers to applications</b> | <b>Yr 1</b> | <b>Yr 2</b> | <b>Yr 3</b> | <b>Yr 4</b> | <b>Yr 5+</b> | <b>Total reg students</b> | <b>Masters students Year 3 +</b> | <b>Total registered students 2005</b> |
|-----------------------------------------------|---------------------------|-----------------------------------------------------|-------------|-------------|-------------|-------------|--------------|---------------------------|----------------------------------|---------------------------------------|
| <b><i>School of Dental Science</i></b>        |                           |                                                     |             |             |             |             |              |                           |                                  |                                       |
| Dental Science                                | 34                        | 18 (53%)                                            | 12          | 7           | 2           | 2           | 3            | 26                        |                                  | <b>17</b>                             |
| <b><i>School of Medicine</i></b>              |                           |                                                     |             |             |             |             |              |                           |                                  |                                       |
| Anatomy                                       | 4                         | 4 (100%)                                            | 1           |             | 1           |             | 1            | 3                         | 1                                | <b>3</b>                              |
| Clinical Medicine                             | 11                        | 9 (82%)                                             | 9           | 23          | 11          | 7           | 5            | 55                        | 5                                | <b>58</b>                             |
| Clinical Microbiology                         | 4                         | 4 (100%)                                            | 3           | 3           |             | 1           |              | 7                         |                                  | <b>5</b>                              |
| Haematology                                   |                           |                                                     |             | 4           | 2           | 3           | 2            | 11                        |                                  | <b>9</b>                              |
| Health Policy & Management                    | 1                         | 1 (100%)                                            | 1           |             |             |             | 0            | 1                         |                                  |                                       |
| Histopathol & Morbid Anatomy                  | 5                         | 5 (100%)                                            | 4           | 3           | 1           |             | 1            | 9                         |                                  | <b>10</b>                             |
| Immunology                                    |                           |                                                     |             |             | 2           | 2           |              | 4                         | 1                                | <b>7</b>                              |
| Medical Gerontology                           |                           |                                                     |             | 2           |             |             |              | 2                         |                                  | <b>1</b>                              |
| Microbiology                                  | 9                         | 6 (67%)                                             | 7           | 5           | 7           | 8           | 3            | 30                        |                                  |                                       |
| Obstetrics & Gynaecology                      |                           |                                                     |             |             | 1           | 1           |              | 2                         |                                  | <b>3</b>                              |
| Occupational Therapy                          | 3                         | 2 (67%)                                             | 1           | 1           | 1           | 1           |              | 4                         | 1                                | <b>3</b>                              |
| Paediatrics                                   |                           |                                                     |             | 1           |             |             | 1            | 2                         |                                  | <b>3</b>                              |
| Pharmacology & Therapeutics                   | 5                         | 5 (100%)                                            | 2           | 2           | 6           |             | 1            | 11                        | 1                                | <b>15</b>                             |
| Physiology                                    | 8                         | 7 (88%)                                             | 5           | 12          | 17          | 2           | 0            | 36                        | 3                                | <b>28</b>                             |
| Physiotherapy                                 | 6                         | 3 (50%)                                             | 4           | 3           | 5           | 1           | 1            | 14                        | 2                                | <b>11</b>                             |
| Psychiatry                                    | 2                         | 1 (50%)                                             | 2           | 6           | 3           | 1           | 1            | 13                        | 1                                | <b>12</b>                             |
| Public Health & Primary Care                  | 2                         | 2 (100%)                                            | 3           | 1           | 1           |             | 2            | 7                         | 1                                | <b>6</b>                              |
| Radiation & Therapy                           | 1                         | 1 (100%)                                            |             | 3           |             | 1           |              | 4                         |                                  | <b>4</b>                              |
| Surgery                                       | 1                         | 1 (100%)                                            | 3           | 10          | 4           |             |              | 17                        |                                  | <b>17</b>                             |
| <b><i>School of Nursing and Midwifery</i></b> |                           |                                                     |             |             |             |             |              |                           |                                  |                                       |
| Nursing & Midwifery                           | 18                        | 14 (78%)                                            | 14          | 8           | 5           | 3           | 4            | 34                        | 2                                | <b>20</b>                             |

|                                                       |    |          |    |   |   |   |   |    |   |           |
|-------------------------------------------------------|----|----------|----|---|---|---|---|----|---|-----------|
| <i>School of Pharmacy and Pharmaceutical Sciences</i> |    |          |    |   |   |   |   |    |   |           |
| Pharmacy                                              | 30 | 28 (93%) | 28 | 8 | 9 | 8 | 4 | 57 | 1 | <b>37</b> |

**Faculty Totals** **144** **83 (58%)** **29** **345** **18** **262**

|                                                 | Total Applications | No. Offers Made and % offers to applications | Yr 1 | Yr 2 | Yr 3 | Yr 4 | Yr 5+ | Total reg students | Masters students Year 3 + | Total registered students 2005 |
|-------------------------------------------------|--------------------|----------------------------------------------|------|------|------|------|-------|--------------------|---------------------------|--------------------------------|
| <b>Faculty of Social and Human Sciences</b>     |                    |                                              |      |      |      |      |       |                    |                           |                                |
| <i>School of Business</i>                       |                    |                                              |      |      |      |      |       |                    |                           |                                |
| Business Studies                                | 17                 | 6 (35%)                                      | 7    | 6    | 13   | 6    | 18    | 50                 | 4                         | <b>52</b>                      |
| <i>School of Education</i>                      |                    |                                              |      |      |      |      |       |                    |                           |                                |
| Education                                       | 31                 | 22 (71%)                                     | 23   | 11   | 9    | 7    | 10    | 60                 | 6                         | <b>37</b>                      |
| <i>School of Law</i>                            |                    |                                              |      |      |      |      |       |                    |                           |                                |
| Law                                             | 35                 | 22 (63%)                                     | 22   | 18   | 7    | 4    | 10    | 61                 | 1                         | <b>53</b>                      |
| <i>School of Psychology</i>                     |                    |                                              |      |      |      |      |       |                    |                           |                                |
| Psychology                                      | 16                 | 14 (88%)                                     | 27   | 20   | 25   | 3    | 10    | 85                 |                           | <b>87</b>                      |
| <i>School of Social Sciences and Philosophy</i> |                    |                                              |      |      |      |      |       |                    |                           |                                |
| Economics                                       | 33                 | 22 (67%)                                     | 20   | 11   | 9    | 7    | 5     | 52                 |                           | <b>38</b>                      |
| Political Science                               | 4                  | 2 (50%)                                      |      | 2    | 4    | 18   | 1     | 25                 |                           | <b>24</b>                      |
| Sociology                                       | 12                 | 10 (83%)                                     | 5    | 5    | 1    | 5    | 14    | 30                 |                           | <b>35</b>                      |
| Philosophy                                      | 20                 | 6 (30%)                                      | 5    | 2    | 5    | 2    | 2     | 16                 | 4                         | <b>14</b>                      |
| <i>School of Social Work and Social Policy</i>  |                    |                                              |      |      |      |      |       |                    |                           |                                |
| Social Studies                                  | 11                 | 9 (82%)                                      | 9    | 6    | 6    | 3    | 3     | 27                 |                           | <b>20</b>                      |

**Faculty Totals** **179** **113(63%)** **73** **406** **15** **360**

| <b>Faculty of Science</b>                               | <b>Total Applications</b> | <b>No. Offers Made and % offers to applications</b> | <b>Yr 1</b> | <b>Yr 2</b> | <b>Yr 3</b> | <b>Yr 4</b> | <b>Yr 5+</b> | <b>Total reg students</b> | <b>Masters students Year 3 +</b> | <b>Total registered students 2005</b> |
|---------------------------------------------------------|---------------------------|-----------------------------------------------------|-------------|-------------|-------------|-------------|--------------|---------------------------|----------------------------------|---------------------------------------|
| <b><i>School of Biochemistry and Immunology</i></b>     |                           |                                                     |             |             |             |             |              |                           |                                  |                                       |
| Biochemistry                                            | 11                        | 11 (100%)                                           | 12          | 10          | 14          | 5           | 7            | 48                        | 1                                | <b>51</b>                             |
| Immunology (Medicine)                                   |                           |                                                     |             |             | 2           | 2           |              | 4                         | 1                                |                                       |
| <b><i>School of Chemistry</i></b>                       |                           |                                                     |             |             |             |             |              |                           |                                  |                                       |
| Chemistry                                               | 30                        | 29 (97%)                                            | 27          | 17          | 25          | 18          | 9            | 96                        | 2                                | <b>82</b>                             |
| <b><i>School of Mathematics</i></b>                     |                           |                                                     |             |             |             |             |              |                           |                                  |                                       |
| Mathematics                                             | 9                         | 8 (89%)                                             | 7           | 6           | 3           | 1           | 5            | 22                        |                                  | <b>21</b>                             |
| <b><i>School of Natural Sciences</i></b>                |                           |                                                     |             |             |             |             |              |                           |                                  |                                       |
| Botany                                                  | 10                        | 10 (100%)                                           | 6           | 12          | 5           | 7           | 4            | 34                        | 2                                | <b>35</b>                             |
| Geography                                               | 13                        | 9 (69%)                                             | 7           | 8           | 5           | 10          | 5            | 35                        |                                  | <b>33</b>                             |
| Geology                                                 | 12                        | 12 (100%)                                           | 11          | 11          | 4           | 3           | 4            | 33                        |                                  | <b>29</b>                             |
| Zoology                                                 | 10                        | 10 (100%)                                           | 8           | 6           | 11          | 1           | 8            | 34                        | 5                                | <b>36</b>                             |
| Trinity Centre of Environment                           |                           |                                                     | 1           |             |             |             |              | 1                         |                                  |                                       |
| <b><i>School of Physics</i></b>                         |                           |                                                     |             |             |             |             |              |                           |                                  |                                       |
| Physics                                                 | 29                        | 24 (83%)                                            | 21          | 22          | 21          | 24          | 12           | 100                       | 5                                | <b>104</b>                            |
| <b><i>Vice Deanery of Genetics and Microbiology</i></b> |                           |                                                     |             |             |             |             |              |                           |                                  |                                       |
| Genetics                                                | 17                        | 17 (100%)                                           | 13          | 7           | 9           | 9           | 8            | 46                        | 8                                | <b>43</b>                             |
| Microbiology                                            |                           |                                                     | 7           | 5           | 7           | 8           | 3            | 30                        |                                  | <b>30</b>                             |
| <b>Faculty Totals</b>                                   | <b>141</b>                | <b>130(92%)</b>                                     |             |             |             |             | <b>65</b>    | <b>483</b>                | <b>24</b>                        | <b>464</b>                            |

14.32% of current registered research students are year 5+.

116 students (6.2%) are currently registered as year 3 on the M.Litt or M.Sc register.

Of the 549 offers made to prospective research students, 89% are currently registered students in year 1.

Registered research student numbers this year represent a 6.1% increase on last years registered numbers.

Appendix 8: Table of the 'Supervision ratio' per School/Department. The Table is sorted with the School having the highest supervision ratio

| <b>School/Department</b>                              | <b>Number of registered research students</b> | <b>Number of academic staff eligible to supervise research students (see Note 1)</b> | <b>% Approx nr staff acting as supervisors (see Note 2)</b> | <b>Supervision ratio A (see Note 3)</b> | <b>Supervision ratio B (see Note 4)</b> |
|-------------------------------------------------------|-----------------------------------------------|--------------------------------------------------------------------------------------|-------------------------------------------------------------|-----------------------------------------|-----------------------------------------|
| <b>School of Chemistry</b>                            | 96                                            | 21                                                                                   | 86%                                                         | <b>4.6</b>                              | 5.3                                     |
| <b>Irish School of Ecumenics</b>                      | 31                                            | 7                                                                                    | 100%                                                        | <b>4.4</b>                              | 4.4                                     |
| <b>School of Physics</b>                              | 100                                           | 27                                                                                   | 81%                                                         | <b>3.7</b>                              | 4.5                                     |
| <b>Vice Deanery of Genetics and Microbiology</b>      | 76                                            | 21                                                                                   | 100%                                                        | <b>3.6</b>                              | 3.6                                     |
| Genetics                                              | 46                                            | 13                                                                                   | 100%                                                        | <b>3.5</b>                              | 3.5                                     |
| Microbiology                                          | 30                                            | 8                                                                                    | 100%                                                        | <b>3.8</b>                              | 3.8                                     |
| <b>School of Psychology</b>                           | 85                                            | 25                                                                                   | 56%                                                         | <b>3.4</b>                              | 6.1                                     |
| <b>School of Pharmacy and Pharmaceutical Sciences</b> | 57                                            | 18                                                                                   | 89%                                                         | <b>3.2</b>                              | 3.6                                     |
| <b>School of Education</b>                            | 60                                            | 19                                                                                   | 53%                                                         | <b>3.2</b>                              | 6.0                                     |
| <b>School of Natural Sciences</b>                     | 136                                           | 43                                                                                   | 93%                                                         | <b>3.2</b>                              | 3.4                                     |
| Botany                                                | 34                                            | 10                                                                                   | 100%                                                        | <b>3.4</b>                              | 3.4                                     |
| Geography                                             | 35                                            | 12                                                                                   | 75%                                                         | <b>2.9</b>                              | 3.9                                     |
| Geology                                               | 33                                            | 11                                                                                   | 100%                                                        | <b>3.0</b>                              | 3.0                                     |
| Zoology                                               | 34                                            | 10                                                                                   | 100%                                                        | <b>3.4</b>                              | 3.4                                     |



|                                                                           |     |    |      |            |     |
|---------------------------------------------------------------------------|-----|----|------|------------|-----|
| <b>School of Engineering</b>                                              | 139 | 43 | 95%  | <b>3.2</b> | 3.4 |
| Civil, Structural & Environmental Eng                                     | 43  | 14 | 100% | <b>3.1</b> | 3.1 |
| Electronic & Electrical Engineering                                       | 38  | 13 | 92%  | <b>2.9</b> | 3.2 |
| Mechanical & Manufacturing Engineering                                    | 58  | 16 | 94%  | <b>3.6</b> | 3.9 |
| <b>School of Histories and Humanities</b>                                 | 126 | 41 | 78%  | <b>3.1</b> | 3.9 |
| Classics                                                                  | 22  | 8  | 63%  | <b>2.8</b> | 4.4 |
| History                                                                   | 69  | 21 | 81%  | <b>3.3</b> | 4.1 |
| History of Art                                                            | 23  | 8  | 75%  | <b>2.9</b> | 3.8 |
| Centre for Gender and Women's Studies                                     | 12  | 4  | 100% | <b>3.0</b> | 3.0 |
| <b>School of Biochemistry and Immunology</b>                              | 48  | 17 | 100% | <b>2.8</b> | 2.8 |
| <b>School of Law</b>                                                      | 61  | 23 | 70%  | <b>2.7</b> | 3.8 |
| <b>School of English</b>                                                  | 48  | 18 | 67%  | <b>2.7</b> | 4.0 |
| <b>School of Social Sciences and Philosophy</b>                           | 123 | 49 | 76%  | <b>2.5</b> | 3.3 |
| Economics                                                                 | 52  | 18 | 89%  | <b>2.9</b> | 3.3 |
| Political Science                                                         | 25  | 11 | 73%  | <b>2.3</b> | 3.1 |
| Sociology                                                                 | 30  | 11 | 64%  | <b>2.7</b> | 4.3 |
| Philosophy                                                                | 16  | 9  | 67%  | <b>1.8</b> | 2.7 |
| <b>School of Computer Science and Statistics</b>                          | 172 | 70 | 64%  | <b>2.5</b> | 3.8 |
| Computer Science                                                          | 156 | 58 | 62%  | <b>2.7</b> | 4.3 |
| Statistics                                                                | 16  | 12 | 75%  | <b>1.3</b> | 1.8 |
| <b>School of Drama Film and Music</b>                                     | 41  | 18 | 56%  | <b>2.3</b> | 4.1 |
| Drama                                                                     | 23  | 11 | 45%  | <b>2.1</b> | 4.6 |
| Music                                                                     | 18  | 7  | 71%  | <b>2.6</b> | 3.6 |
| <b>Vice-Deanery of Arts and Humanities<br/>(Religions &amp; Theology)</b> | 14  | 6  | 83%  | <b>2.3</b> | 2.8 |

|                                                                |     |    |      |            |     |
|----------------------------------------------------------------|-----|----|------|------------|-----|
| <b>School of Business</b>                                      | 50  | 23 | 61%  | <b>2.2</b> | 3.6 |
| <b>School of Medicine (note 5)</b>                             | 201 | 96 | 74%  | <b>2.1</b> | 2.8 |
| Anatomy                                                        | 3   | 4  | 75%  | <b>0.8</b> | 1.0 |
| Clinical Medicine                                              | 55  | 10 | 210% | <b>5.5</b> | 2.6 |
| Clinical Microbiology                                          | 7   | 5  | 80%  | <b>1.4</b> | 1.8 |
| Haematology                                                    | 11  | 2  | 100% | <b>5.5</b> | 5.5 |
| Histopathol & Morbid Anatomy                                   | 9   | 4  | 75%  | <b>2.3</b> | 3.0 |
| Medical Gerontology                                            | 2   | 1  | 100% | <b>2.0</b> | 2.0 |
| Immunology                                                     | 4   | 2  | 100% | <b>2.0</b> | 2.0 |
| Obstetrics & Gynaecology                                       | 2   | 3  | 33%  | <b>0.7</b> | 2.0 |
| Occupational Therapy                                           | 4   | 11 | 9%   | <b>0.4</b> | 4.0 |
| Paediatrics                                                    | 2   | 2  | 50%  | <b>1.0</b> | 2.0 |
| Pharmacology & Therapeutics                                    | 11  | 5  | 60%  | <b>2.2</b> | 3.7 |
| Physiology                                                     | 36  | 10 | 90%  | <b>3.6</b> | 4.0 |
| Physiotherapy                                                  | 14  | 11 | 36%  | <b>1.3</b> | 3.5 |
| Psychiatry                                                     | 13  | 4  | 50%  | <b>3.3</b> | 6.5 |
| Public Health & Primary Care                                   | 7   | 8  | 75%  | <b>0.9</b> | 1.2 |
| Radiation & Therapy                                            | 4   | 8  | 38%  | <b>0.5</b> | 1.3 |
| Surgery                                                        | 17  | 6  | 83%  | <b>2.8</b> | 3.4 |
| <b>School of Social Work and Social Policy</b>                 | 27  | 17 | 59%  | <b>1.6</b> | 2.7 |
| <b>School of Languages, Literature and Cultural Studies</b>    | 51  | 35 | 49%  | <b>1.5</b> | 3.0 |
| French                                                         | 12  | 12 | 42%  | <b>1.0</b> | 2.4 |
| Germanic Studies                                               | 11  | 6  | 50%  | <b>1.8</b> | 3.7 |
| Hispanic Studies                                               | 11  | 5  | 60%  | <b>2.2</b> | 3.7 |
| Irish & Celtic Languages                                       | 8   | 4  | 75%  | <b>2.0</b> | 2.7 |
| Italian                                                        | 5   | 3  | 67%  | <b>1.7</b> | 2.5 |
| Russian & Slavonic Studies                                     | 4   | 5  | 20%  | <b>0.8</b> | 4.0 |
| <b>School of Linguistic, Speech and Communication Sciences</b> | 34  | 24 | 38%  | <b>1.4</b> | 3.8 |
| Centre for Language & Communication St                         | 32  | 17 | 47%  | <b>1.9</b> | 4.0 |

|                                                 |    |    |     |            |     |
|-------------------------------------------------|----|----|-----|------------|-----|
| Clinical Speech and Language Studies            | 2  | 7  | 14% | <b>0.3</b> | 2.0 |
| <b><i>School of Mathematics</i></b>             | 22 | 22 | 55% | <b>1.0</b> | 1.8 |
| <b><i>School of Dental Science (note 5)</i></b> | 26 | 30 | 33% | <b>0.9</b> | 2.6 |
| <b><i>School of Nursing &amp; Midwifery</i></b> | 34 | 71 | 11% | <b>0.5</b> | 4.3 |

**Note 1** The number of academic staff eligible to supervise is taken to be the number of staff on the Lecturer grade or above plus emeritus staff acting as supervisors. In a few cases other categories of staff are eligible to supervise, and also, in a small number of cases, staff from one school supervise in another. Therefore there is no simple one-to-one correspondence between staff numbers in a School and the figure given in this column.

**Note 2** The number of staff supervising at least one research student (active supervisors) is taken from the student records.

**Note 3** The ratio given in this column is the commonly accepted definition of "Supervision ratio", i.e. the total number of research students divided by the total number of staff eligible to supervise.

**Note 4** The ratio given in this column is the total number of research students divided by the total number of active supervisors.

**Note 5** The number of staff eligible to supervise should be taken as indicative in the School of Medicine and the School of Dental Science.

