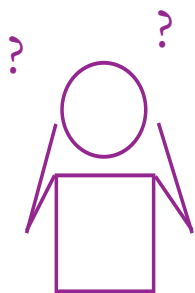


Significant Ongoing Illness Specific Support

Trinity
disAbility Hub



Common challenges for students with a Significant Ongoing Illness

- Completing coursework to meet deadlines.
- Managing reading and writing workload.
- Maintaining energy and stamina throughout the university day.
- Missing lectures due to hospital appointments, illness or treatments.

Click here for
a Significant
Ongoing Illness
Awareness video.

Commonly used teaching & learning techniques

- Handouts in advance.
- Students can contact their Disability Officer in situations where a deadline extension may be needed.
- Prioritised reading lists.
- Recording lectures.

Commonly used exam accommodations

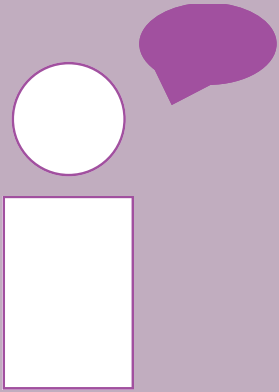
- Group or individual venue.
- Extra time.
- Use of computer in exam.
- Rest breaks.



1:1

Disability Service Supports

Occupational Therapy



- Help navigating the college facilities on and offline.
- Help the student to develop a balanced routine and weekly plan.
- Help you stay on track of coursework by developing plans and setting goals.
- Offer guidance about Social and Leisure engagement.
- Assist with preparation for placement and other work experiences.

Specialist Academic Support



Meeting with the Academic Support specialist can work well alongside your OT and AT meetings, or by itself. Academic support meetings are great when approaching exams, or to help you stay organised with your academic work throughout the year. Some things you may address in a 1:1 meeting:

- Becoming familiar with Blackboard and online systems.
- Developing a study plan.
- Specific study skills.

Assistive technology



Assistive Technology can be both high and low tech and can help you perform tasks more easily. Students with a significant ongoing illness commonly use the following:

- Speech to text software.
- Grammarly.
- Note taking.
- Touch typing.

Where can I find more information about the Disability Service?

How to access the ASKDS Disability Service Blackboard module

1. Log in to [Blackboard Learn](#)
2. Click on **'Module Search'**.
3. Type **'Disability Service Supports'** in the **'Module Search'** box and click **'Go'**.
4. If more than one module appears, click on the drop-down arrow beside **'ASKDS'** under the **'MODULE ID'** field.
5. Click on **'Enrol'**.
6. Click on **'Submit'**.

Be sure to meet with a Disability Service (DS) staff member to complete your LENS report.

Find the Disability Service on social media

Twitter: [@TCDAbility](#)

Facebook: [Trinity Disability Service](#)

Instagram: [@TCDAbility](#)

Youtube: [DS Service TCD](#)

Need more help?

Just askds@tcd.ie