

EU/Non-EU Fee Eligibility

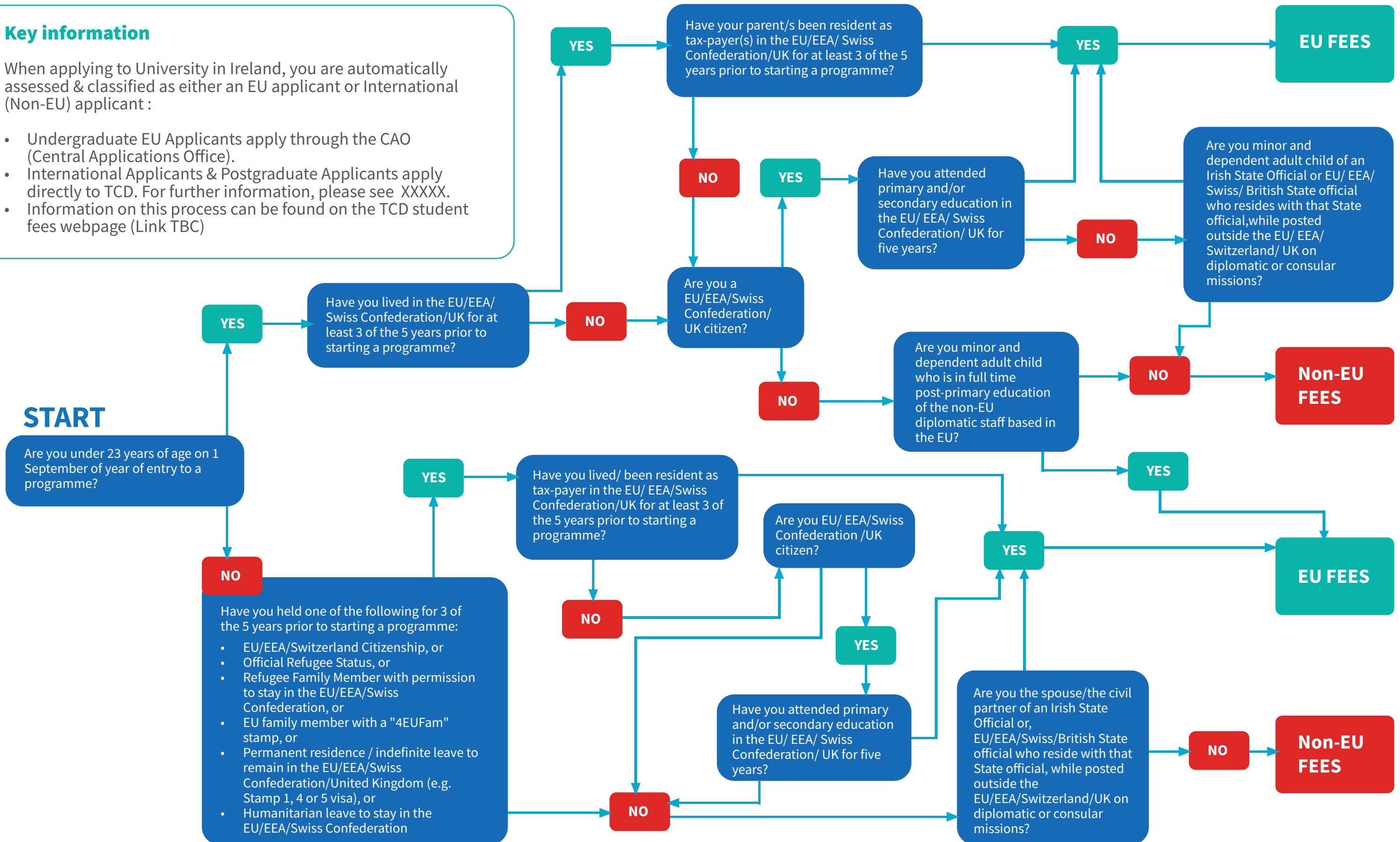
Undergraduates and Postgraduates

This document is for guidance purposes only.

Key information

When applying to University in Ireland, you are automatically assessed & classified as either an EU applicant or International (Non-EU) applicant :

- Undergraduate EU Applicants apply through the CAO (Central Applications Office).
- International Applicants & Postgraduate Applicants apply directly to TCD. For further information, please see XXXXX.
- Information on this process can be found on the TCD student fees webpage (Link TBC)



EU/Non-EU Fee Eligibility

Undergraduates and Postgraduates

This document is for guidance purposes only.

Key information

When applying to University in Ireland, you are automatically assessed & classified as either an EU applicant or International (Non-EU) applicant:

- Undergraduate EU Applicants apply through the CAO (Central Applications Office).
- International Applicants & Postgraduate Applicants apply directly to TCD. For further information, please see XXXXX.
- Information on this process can be found on the TCD student fees webpage (Link TBC)

