

## The newsletter from the Botany Department at Trinity College Dublin

---

### News

---

▪ Congratulations to **Cian White** and **Sarah Gabel** for winning best Overall and best Biodiversity Presentations at **Environ 2018** with their talks "Reframing Nature-based Solutions" and "Factors driving Syrphid abundance, diversity, and community composition in arable cropping systems"!



▪ As some of you may recall, a highly successful exhibition on **Ellen Hutchins**, Ireland's First Female Botanist, ran throughout the Spring last year in the entrance foyer of the Anatomy Building. It featured letters and specimens of Ellen's drawn from the Department's Herbarium.

Now, not only has Ellen been honoured by having an ESB box painted after her [Click on the photo on the right for more information], but much more significantly she has also been put forward as one of the people after whom Ireland's next supercomputer might be named.



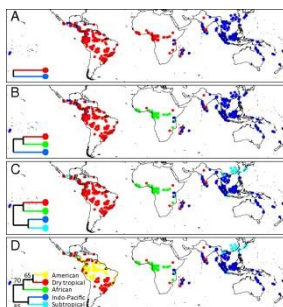
See: <https://www.siliconrepublic.com/machines/ichec-supercomputer-name-women-scientists>.

### Publications

---

▪ **Brian Murphy** and **Trevor Hodkinson** published an article titled "From Concept to Commerce: Developing a Successful Fungal Endophyte Inoculant for Agricultural Crops". In the article, they describe a set of best practices leading to the development of a successful endophyte field crop inoculant. The article is open access and free to download.

*J. Fungi* (2018), 4(1), 24; [doi:10.3390/jof4010024](https://doi.org/10.3390/jof4010024).



▪ **Daniel Kelly** took part in a publication called "Phylogenetic classification of the world's tropical forests" that presents a new phylogeny-based overview of relationships among tropical forests on a world scale. The survey work that Daniel has been involved in in Cusuco National Park in Honduras forms a tiny contribution to the colossal dataset involved. Perhaps the most notable conclusion is that the familiar primary division of 'Palaeotropical' versus 'Neotropical' does not hold up; the African equatorial rainforest is found to be closer to the forests of South America than to those of the Indo-Pacific region.

*PNAS* (2018), 115 (8): 1837-1842; <https://doi.org/10.1073/pnas.1714977115>.

---

- **Jane Stout** and **Ruth Kelly** have published a paper in *Biodiversity and Conservation*: “Contrasting impacts of highly invasive plant species on flower-visiting insect communities”. *Biodiversity and Conservation* (2018); <https://doi.org/10.1007/s10531-018-1525-y>.
- **Jane Stout**, **Ruth Kelly** and **Aoife Delaney** have just published a paper in the open-access *Journal of Pollination Ecology*: “Insect pollination improves yield of Shea (*Vitellaria paradoxa* subsp. *paradoxa*) in the agroforestry parklands of West Africa”. *Journal of Pollination Ecology* (2018), 22; <http://www.pollinationecology.org/index.php?journal=jpe&page=article&op=view&path%5B%5D=473>
- **Jane Stout** took part in a paper called “Research trends in ecosystem services provided by insects”. *Basic and Applied Ecology* (2018), 26: 8-23; <https://doi.org/10.1016/j.baae.2017.09.006>.
- **Melinda Lyons** and **Daniel Kelly**'s article on Irish petrifying springs “Plant community ecology of petrifying springs (Cratoneurion) – a priority habitat” has received the Editors' Award 2017 from the Chief Editors of the journal *Phytocoenologia*. (Neither of them has ever had an Editor's Award before!) *Phytocoenologia* (2017), 47: 13–32; <https://www.schweizerbart.de/content/papers/download/87477>.

## Upcoming events

---



The **EXPEDITIONS** lunchtime seminar series is still ongoing!

This week, **Michelle Murray** will be telling us about her fieldwork adventures in a talk entitled “Avoiding bears in Alaska”.

The full schedule is available [here](#).

**PHYTOBYTES** needs your input, yes you!

Whether you are student or staff, please send any news you have, big or small, to Anne ([dubearna@tcd.ie](mailto:dubearna@tcd.ie)) with the subject heading Phytobytes. Let's share the latest news and always be aware of what is happening at Botany!