



UCL Institute of Health Equity



Austerity and health inequalities

Prof Sir Michael Marmot

www.instituteoftheequity.org

@MichaelMarmot

Trinity College Dublin

5 Feb 2018



UCL Institute of Health Equity



What good does it do to treat people and send them back to the conditions that made them sick?





UCL In

UCL

Michael Marmot

La salute disuguale

La sfida di un mondo ingiusto

A cura di Simona Giampoli e Giuseppe Traversi

Presentazione di Rinaldo Ossola

Presenta il Walter Ricciardi

Prefazione di Giuseppe Casati



70

Il Futuro Scientifico Editore



マイケル・マーモット
健康
不平等な世界への挑戦

格差

THE
HEALTH
GAP

THE CHALLENGE OF
AN UNEQUAL WORLD

MICHAEL MARMOT

栗林寛幸

監訳

HIROYUKI KURIBAYASHI

野田浩夫

翻訳者代表

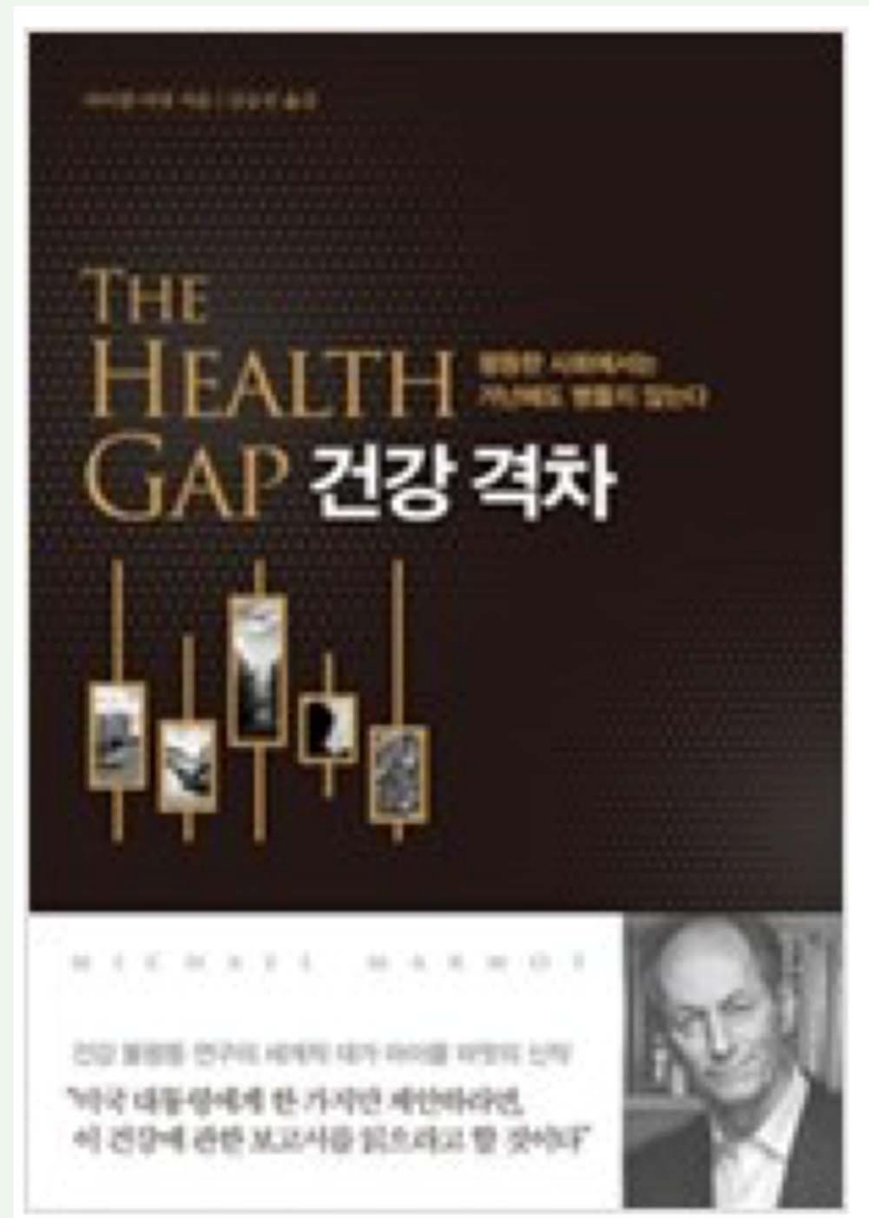
HIROO NODA

2017年～2018年 世界医師会長 就任予定

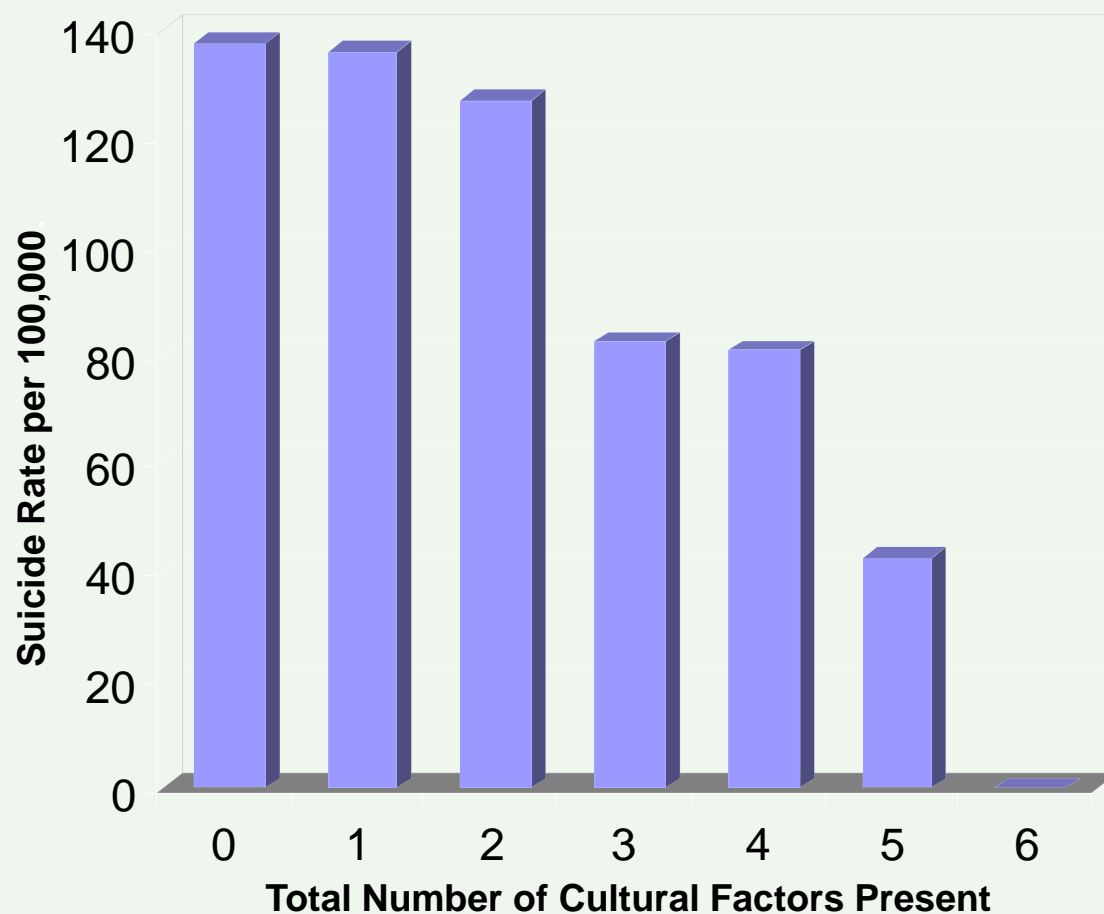
日本医師会長 **横倉義武氏 推薦!**

世界に誇る国民皆保険の我が国でも健康格差の拡大が懸念されている。病気を治すという「医療」の枠に留まらず、何が問題なのか、何をすべきなのかについて考え、行動する上で、本書は極めて示唆に富んでいる。本書が医師や他の医療従事者、政策関係者、そして、できるだけ多くの一般の人に読まれることを願う。（「推薦のことは」より抜粋）

補論：近藤克則（千葉大学予防医学センター教授） 解説：後藤玲子（一橋大学経済研究所教授）



Aboriginal Youth Suicide by Factors Present



Cultural Factors:

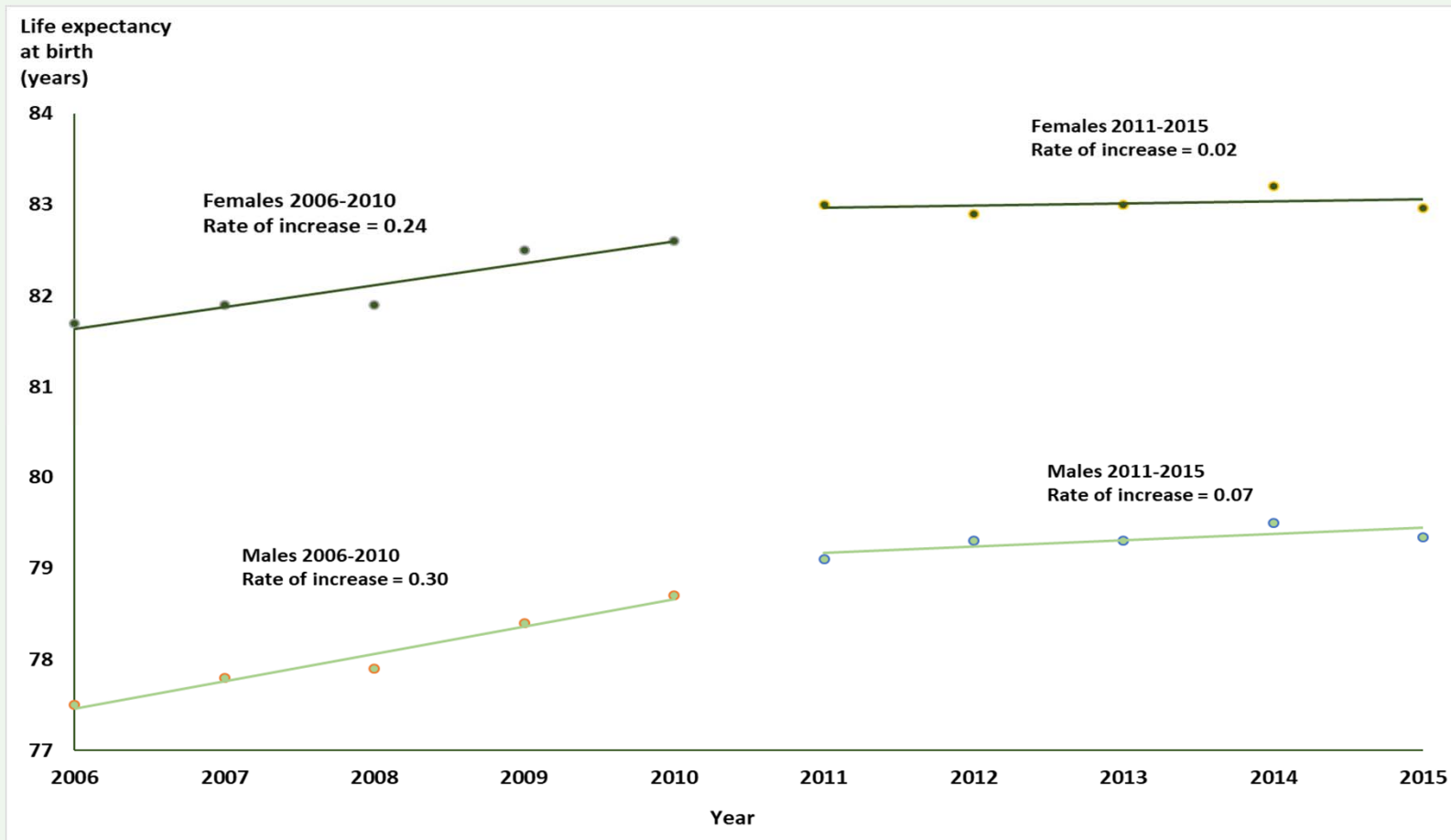
- Self-government
- Land claim participation

Community Control:

- Health services
- Education
- Cultural facilities
- Police/fire services

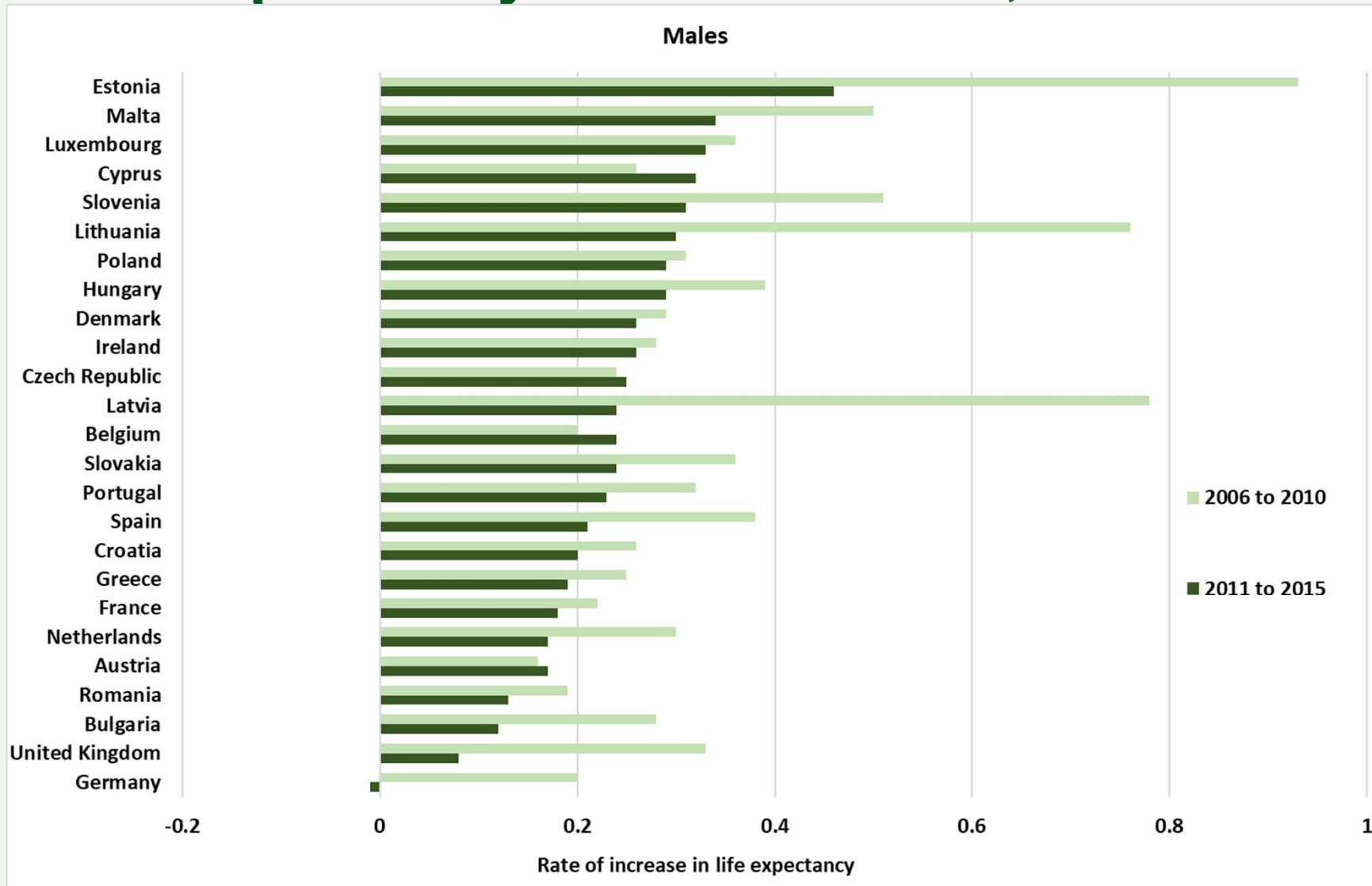


Life expectancy England 2006-2015



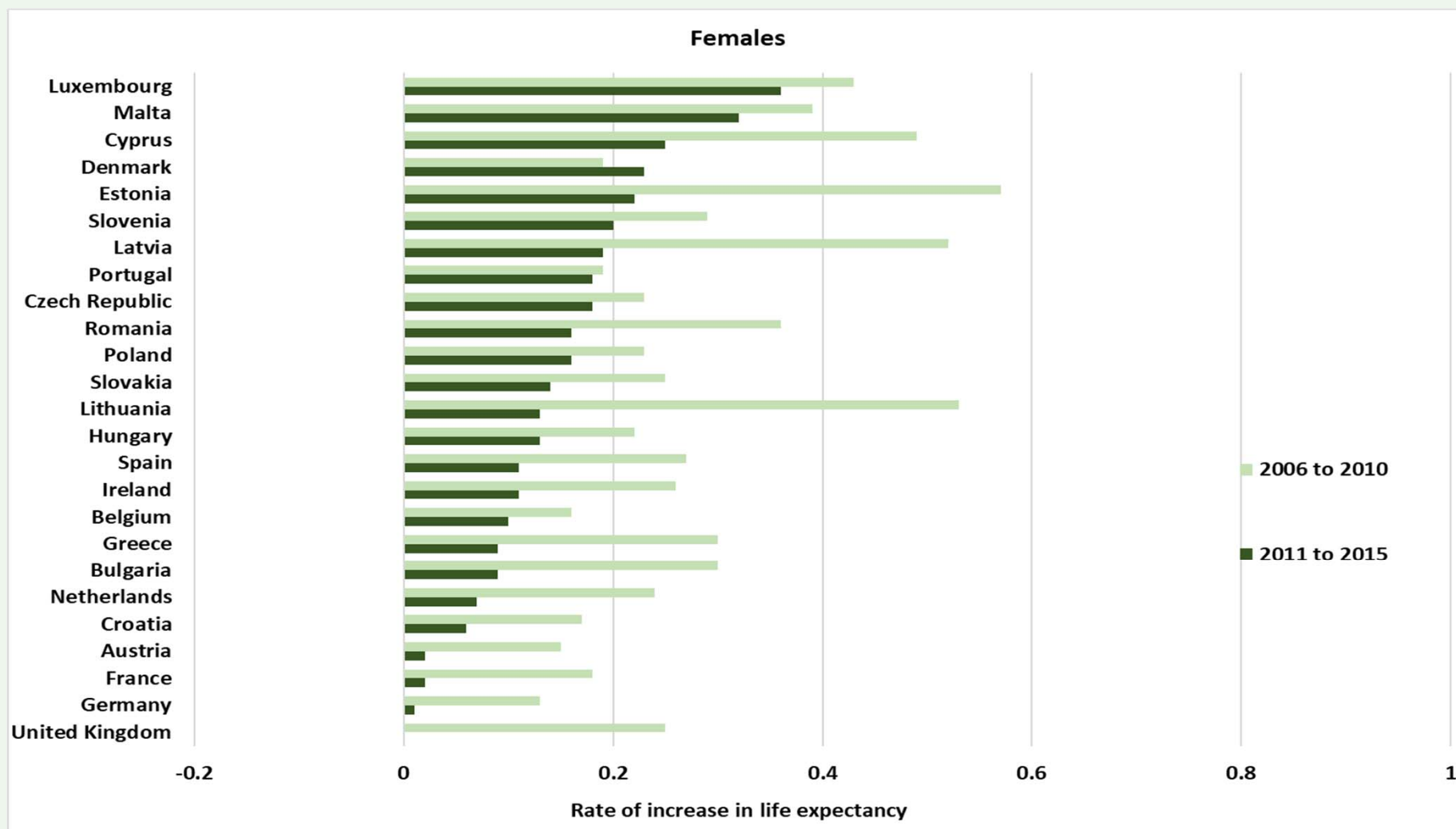


Life Expectancy increase 2006-, 2011-2015





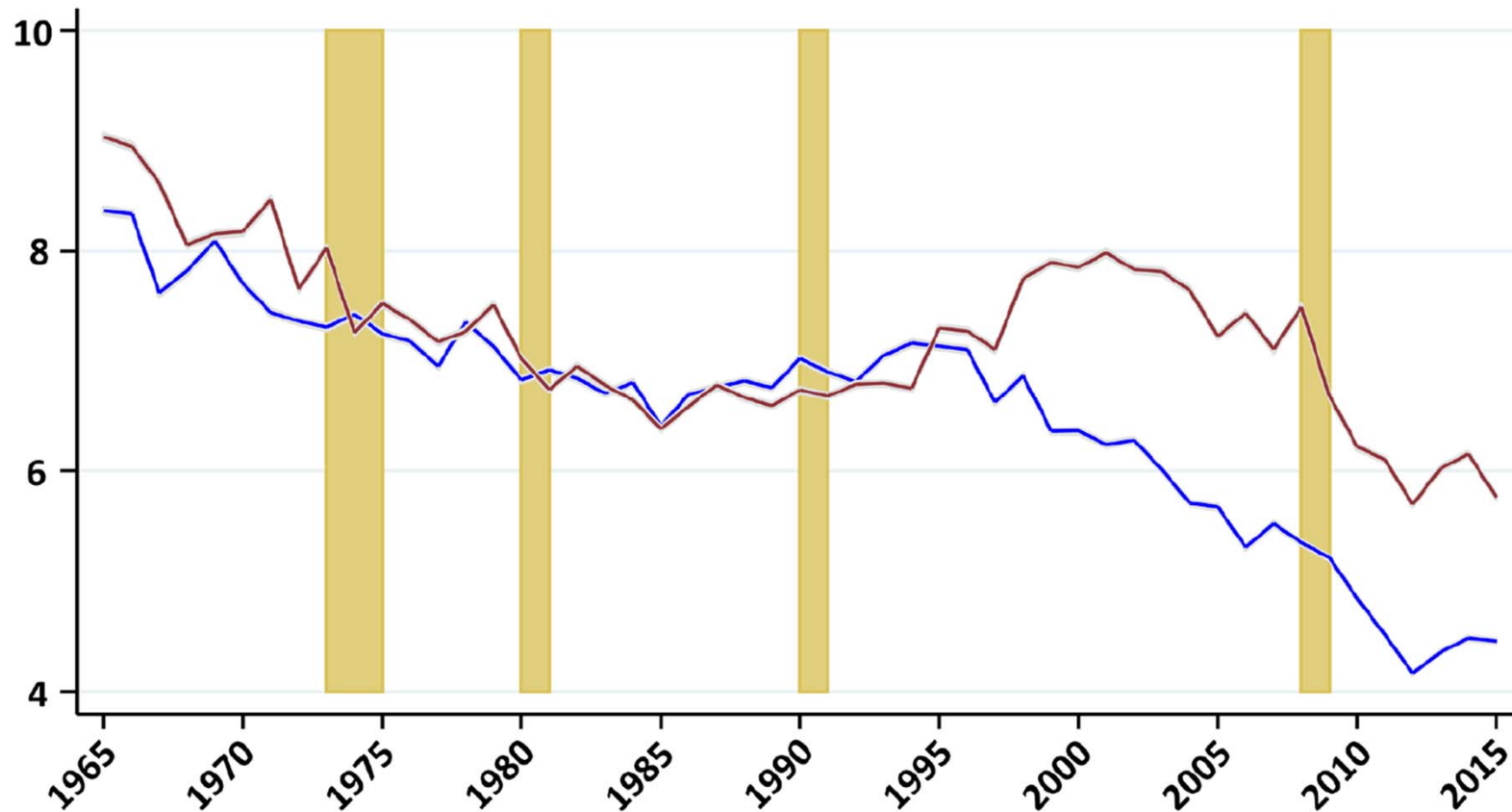
Life expectancy increase 2006-, 2011-2015





Mortality England North and South 25-34

(A) Standardised Mortality (Age 25-34; per 10,000)





Can strategies to reduce health inequalities work?

New Labour did have a strategy

Any evidence?



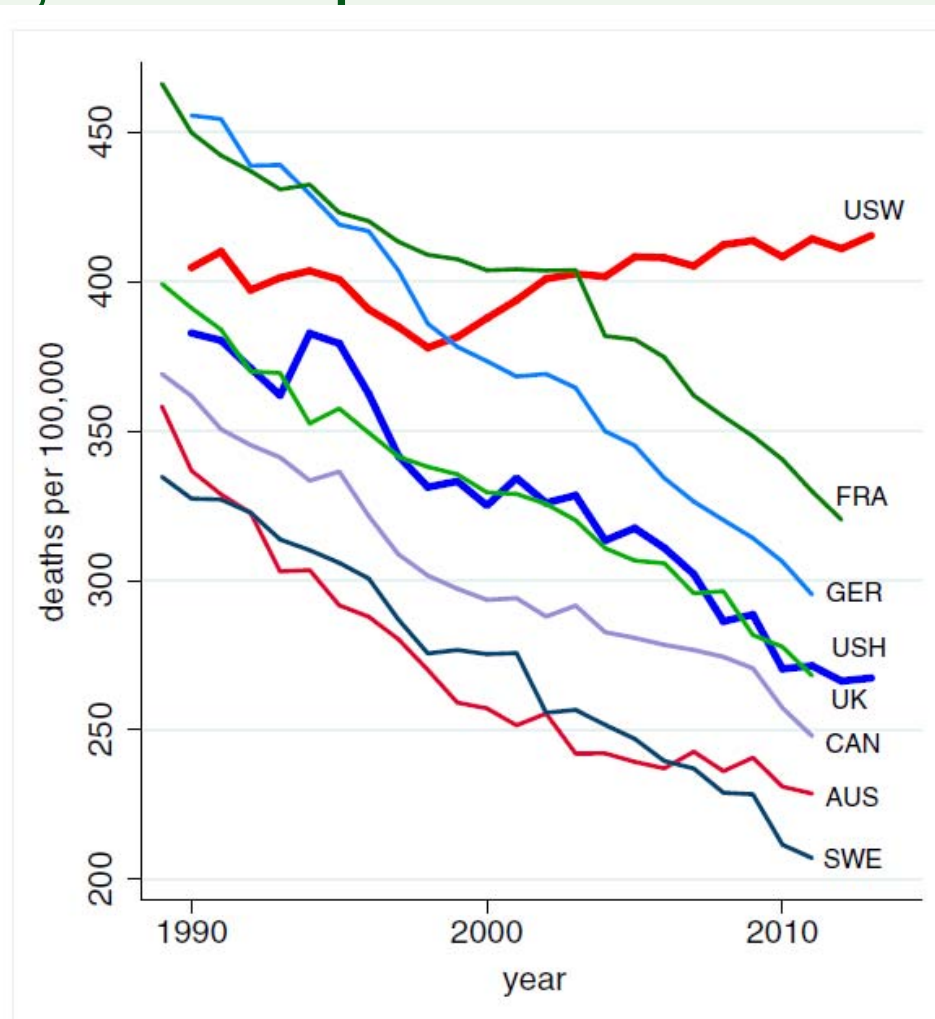
Trends in life expectancy gap between most deprived areas and the average





Does the USA represent the future?

All-cause mortality, ages 45–54 for US White non-Hispanics, US Hispanics and 6 comparison countries

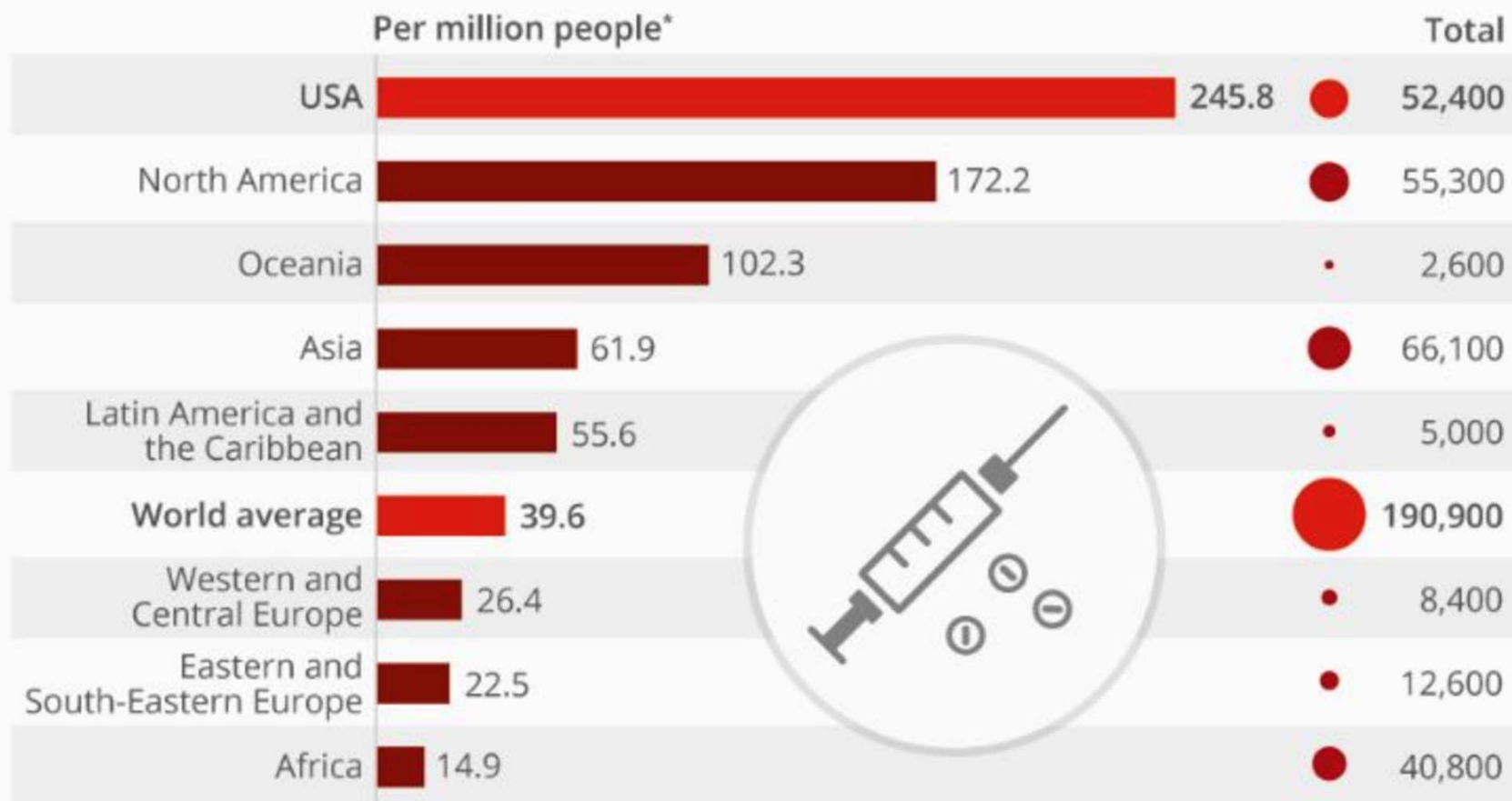


US White non-Hispanics (USW),
 US Hispanics (USH),
 France (FRA),
 Germany (GER),
 United Kingdom (UK),
 Canada (CAN),
 Australia (AUS),
 Sweden (SWE).



America Has The Highest Drug-Death Rate in the World

Estimated number of drug-related deaths and mortality rate 2015



* mortality rate per million persons aged 15-64

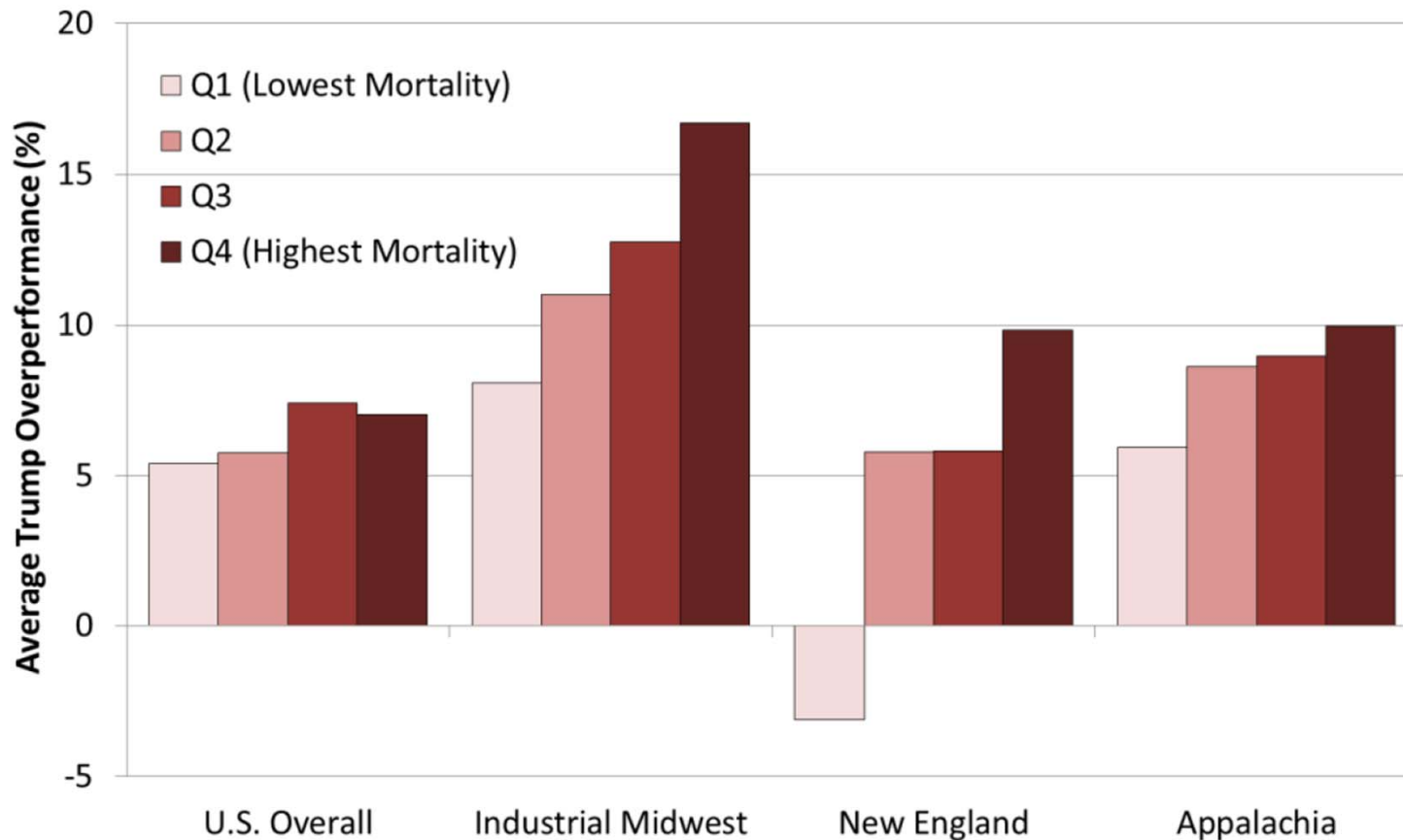
Best estimates according to source

Source: UNODC



When all else seems lost...

FIGURE 1. TRUMP OVERPERFORMANCE, BY DRUG, ALCOHOL AND SUICIDE MORTALITY RATE QUARTILE

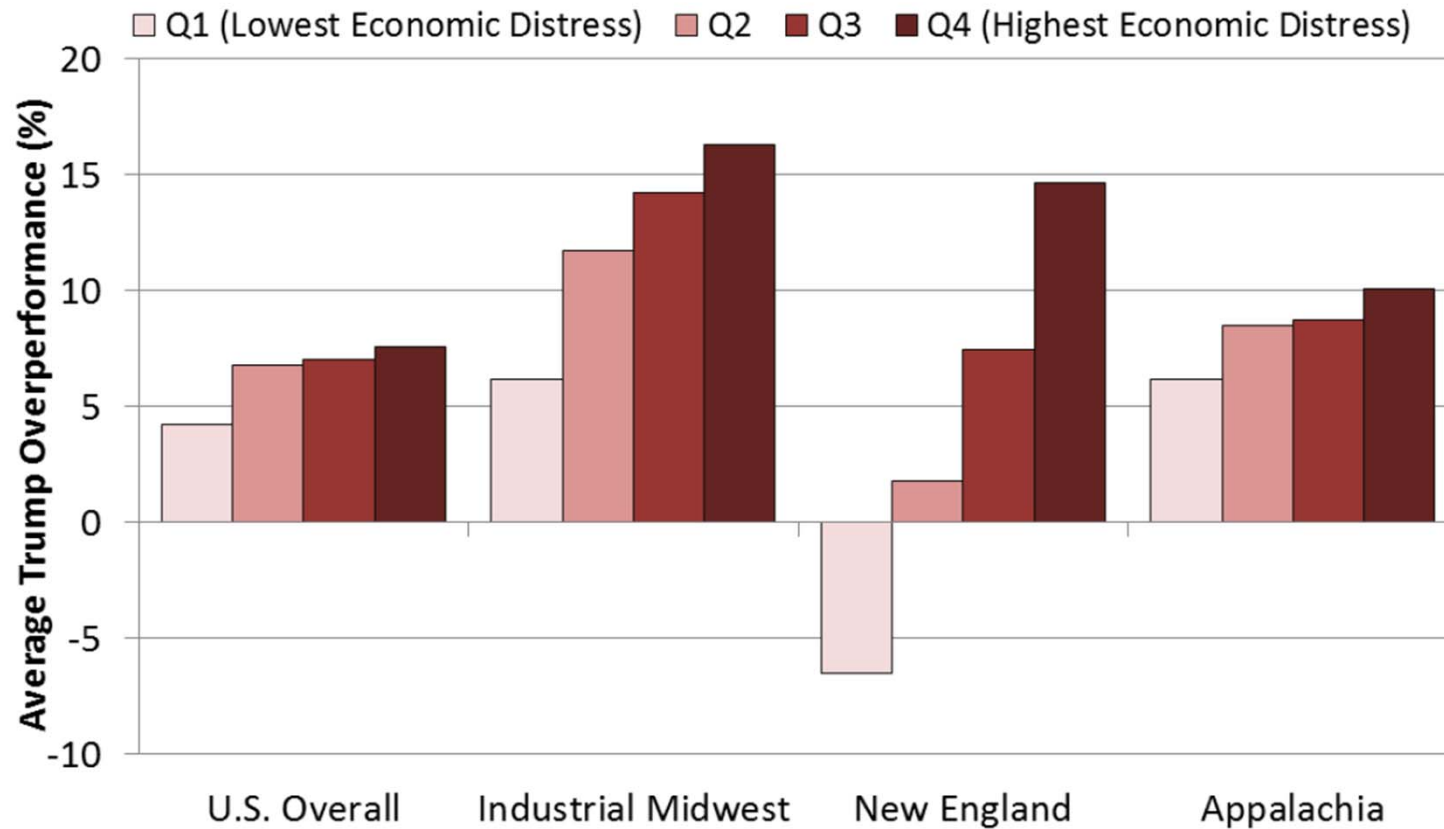


Data Sources: Atlas of U.S. Presidential Elections; U.S. Centers for Disease Control and Prevention



Things really were bad

FIGURE 2. TRUMP OVERPERFORMANCE, BY ECONOMIC DISTRESS AND WORKING CLASS PRESENCE





“Mental and behavioural disorders, such as depression, anxiety, and drug use, are the primary drivers of disability worldwide and caused over 40 million years of disability in 20 to 29-year-olds” in 2010

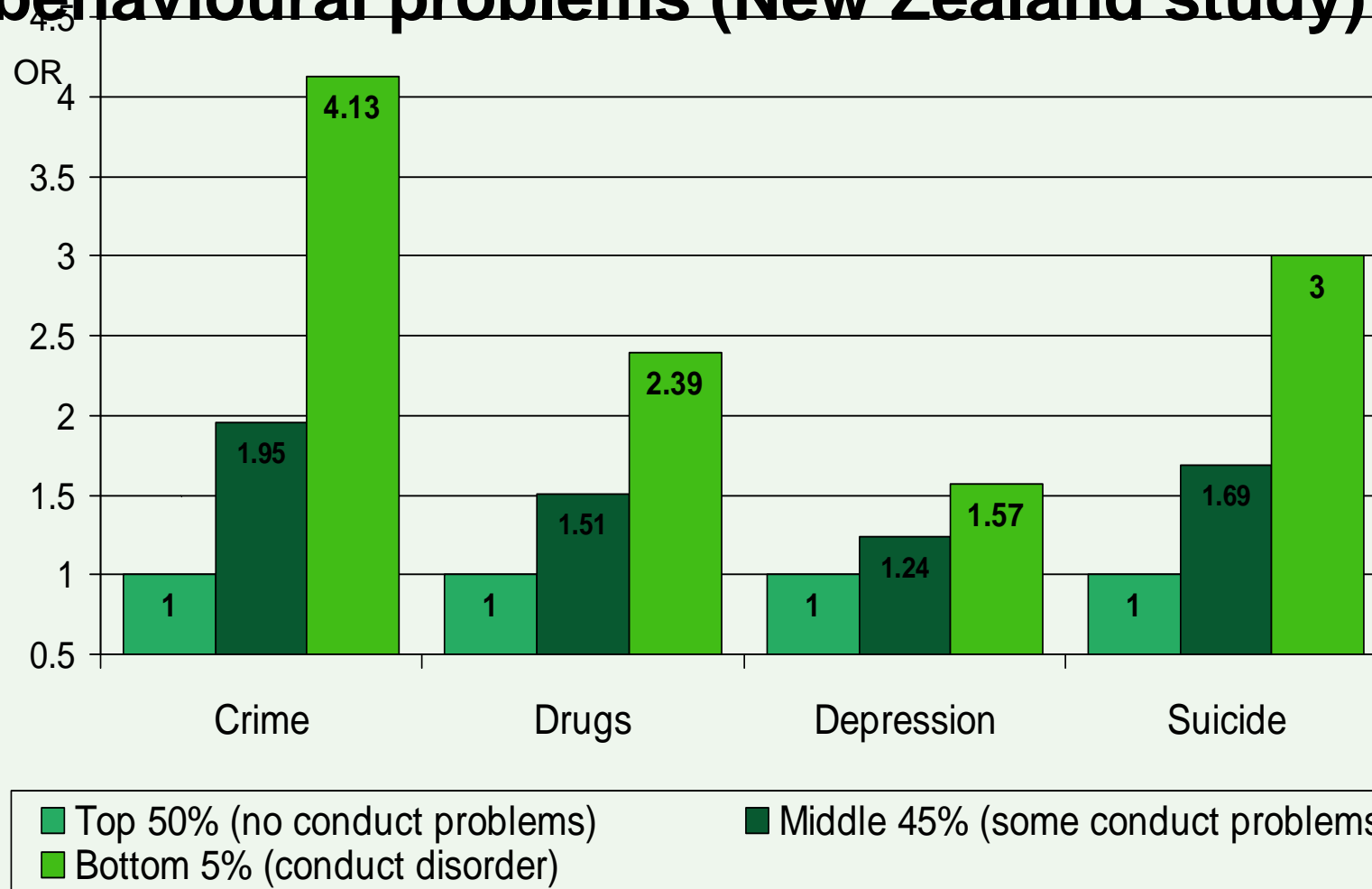


Risk factors for depression

	Level of evidence
Low socioeconomic position	Very convincing
Low education	Very convincing
Unemployment and under employment	Very convincing
Food insecurity and early nutrition deficiency	Strong
Gender inequity	Strong
Low income	Strong



Long term outcomes associated with childhood behavioural problems (New Zealand study)



Source: L. Friedli & M. Parsonage (2007) Mental health promotion: Building an economic case. Based on: Fergusson et al (2005) J. Child Psychol & Psych 46 (8): 837-849

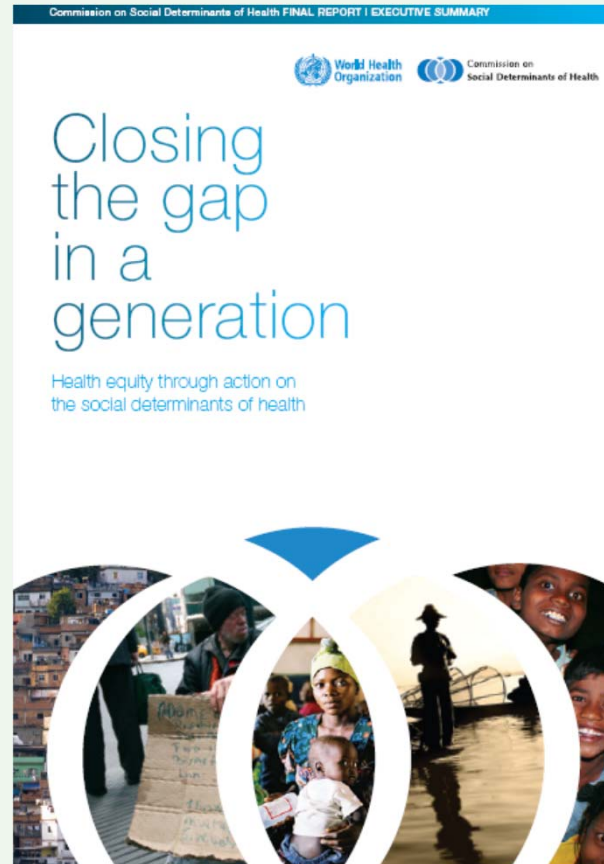


UCL Institute of Health Equity

Social justice

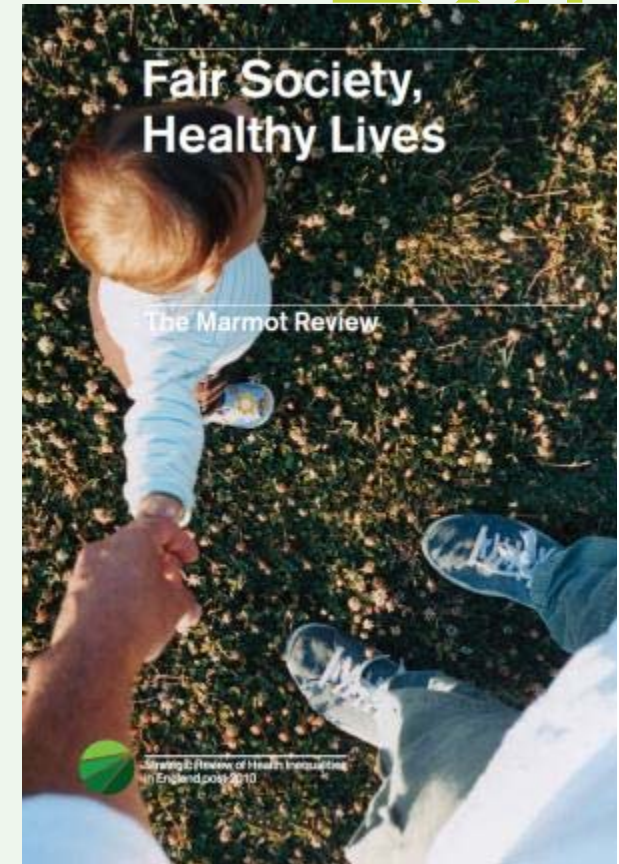
Material,
psychosocial,
political
empowerment

Creating the
conditions for
people to have
control of their
lives



The CSDH – closing the
gap in a generation

2005-2008



The Marmot Review – Fair
Society Healthy Lives

2009/10



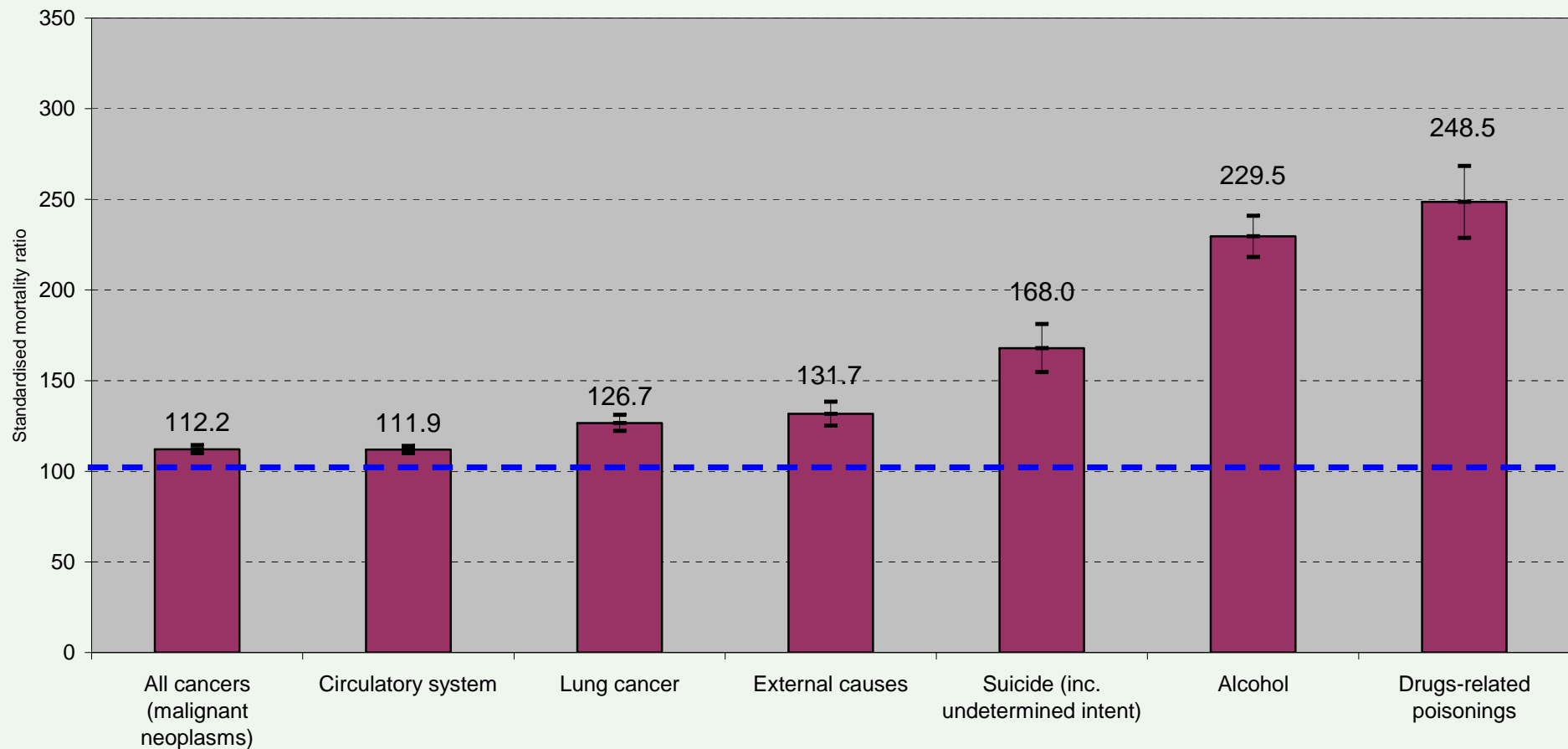
The mind is gateway by which social determinants affect ill-health.

- Mental illness and well-being.
- Psychosocial pathways to physical illness
 - Behaviours
 - Stress pathways



SMRs by cause, all ages: Glasgow relative to Liverpool & Manchester

All ages, both sexes: cause-specific standardised mortality ratios 2003-07, Glasgow relative to Liverpool & Manchester, standardised by age, sex and deprivation decile
Calculated from various sources



Source: Walsh D, Bendel N., Jones R, Hanlon P. It's not 'just deprivation': why do equally deprived UK cities experience different health outcomes? Public Health, 2010

from H Burns, CMO, Scotland



Health improvement in difficult times

- A major element of the excess risk of premature death seen in Scotland is psychosocially determined
- Study evidence of low sense of control, self efficacy and self esteem in population in these areas

H. Burns, CMO Scotland



Marmot Review: 6 Policy Objectives

- A. Give every child the best start in life**
- B. Enable all children, young people and adults to maximise their capabilities and have control over their lives**
- C. Create fair employment and good work for all**
- D. Ensure healthy standard of living for all**
- E. Create and develop healthy and sustainable places and communities**
- F. Strengthen the role and impact of ill health prevention**

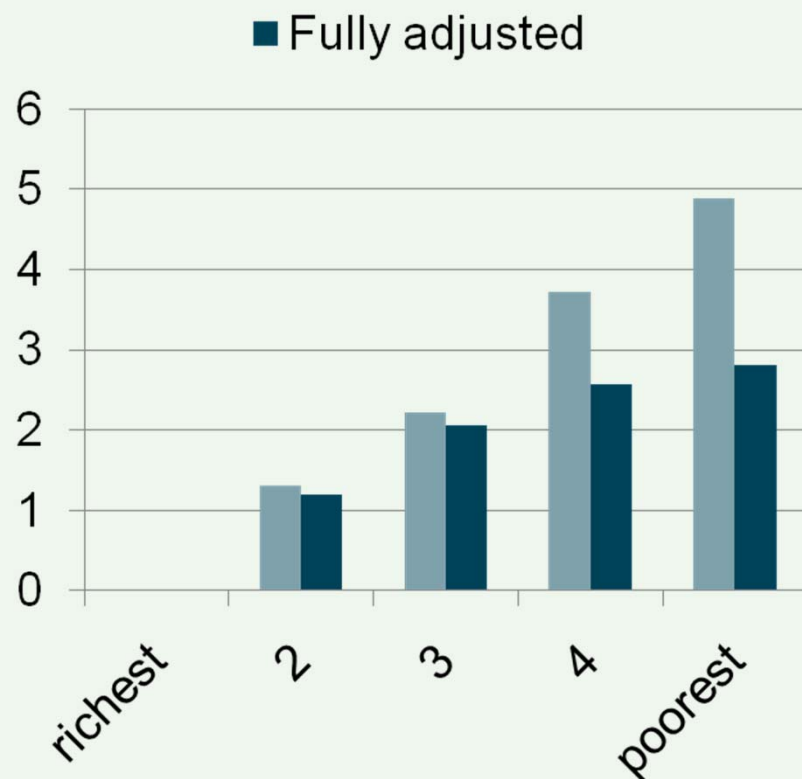


Marmot Review: 6 Policy Objectives

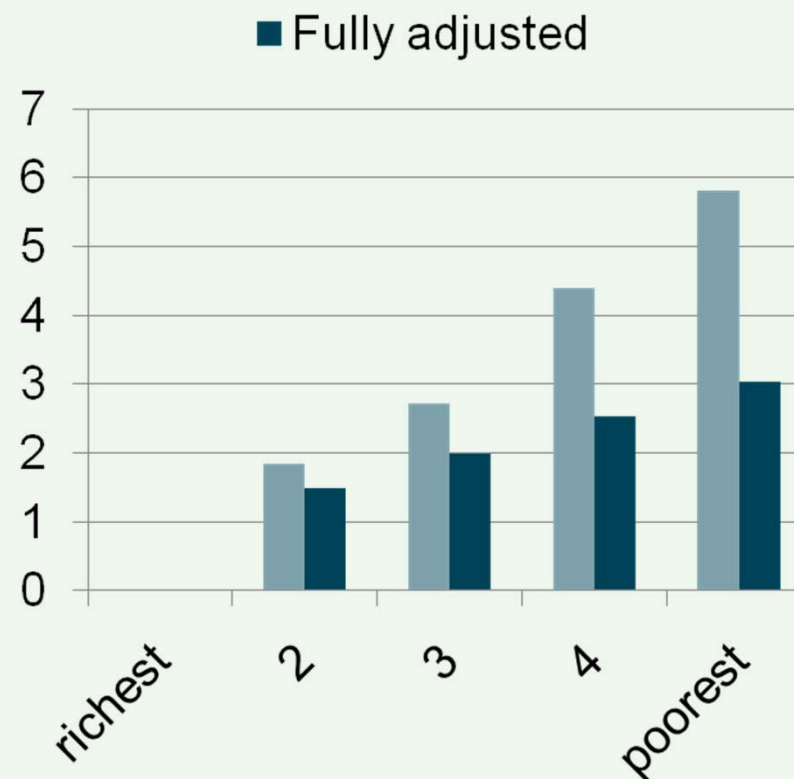
- A. Give every child the best start in life**
- B. Enable all children, young people and adults to maximise their capabilities and have control over their lives**
- C. Create fair employment and good work for all**
- D. Ensure healthy standard of living for all**
- E. Create and develop healthy and sustainable places and communities**
- F. Strengthen the role and impact of ill health prevention**

Socio-emotional difficulties at age 3 and 5: Millennium Cohort Study

Age 3



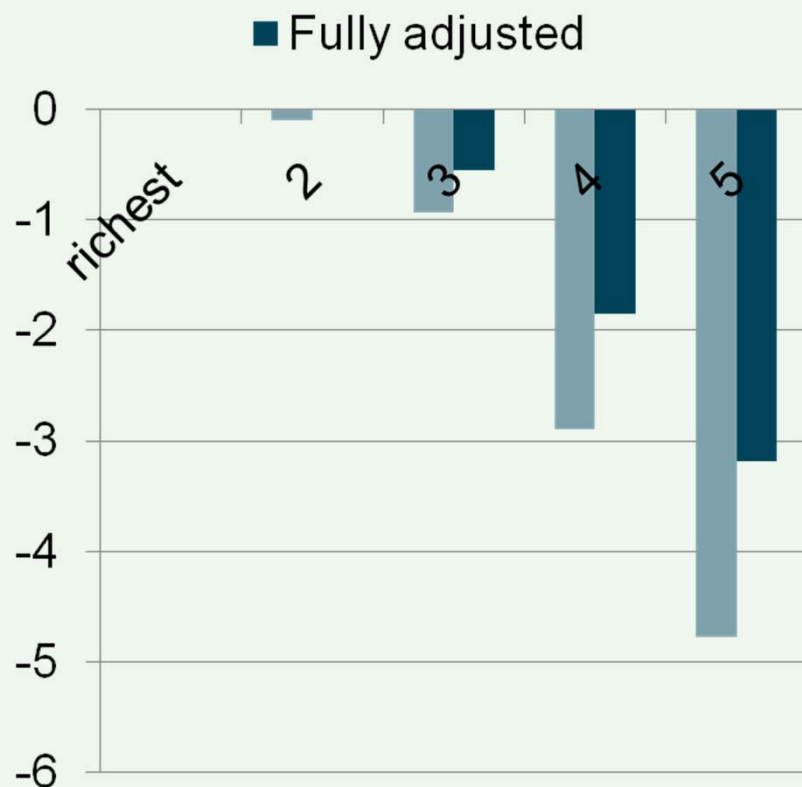
Age 5



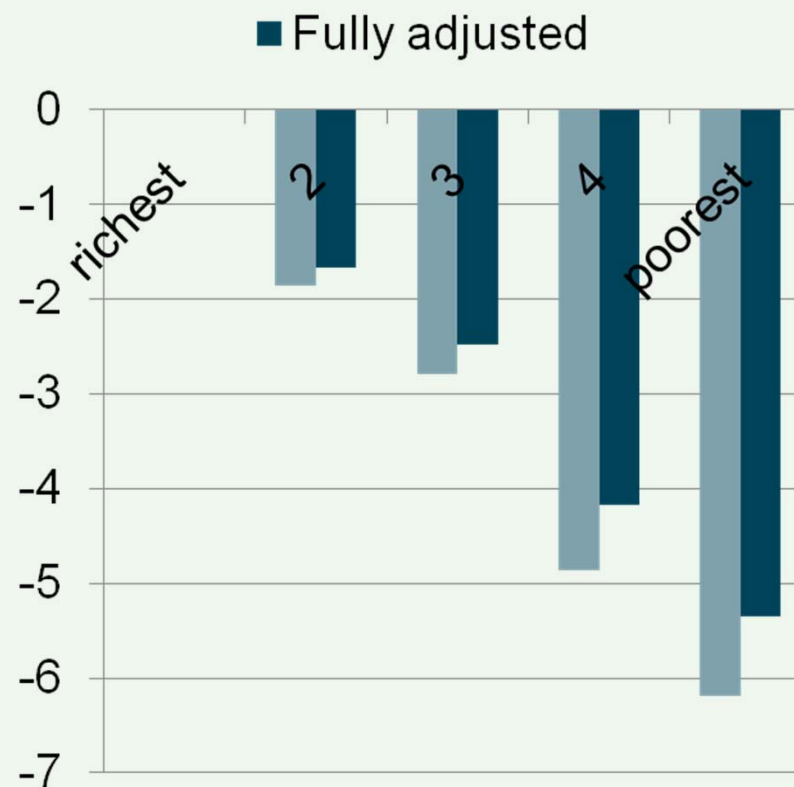
Fully adjusted = for parenting activities and psychosocial markers
Kelly et al, 2010

Verbal ability at age 3 and 5 by family income: Millennium Cohort Study

Age 3



Age 5

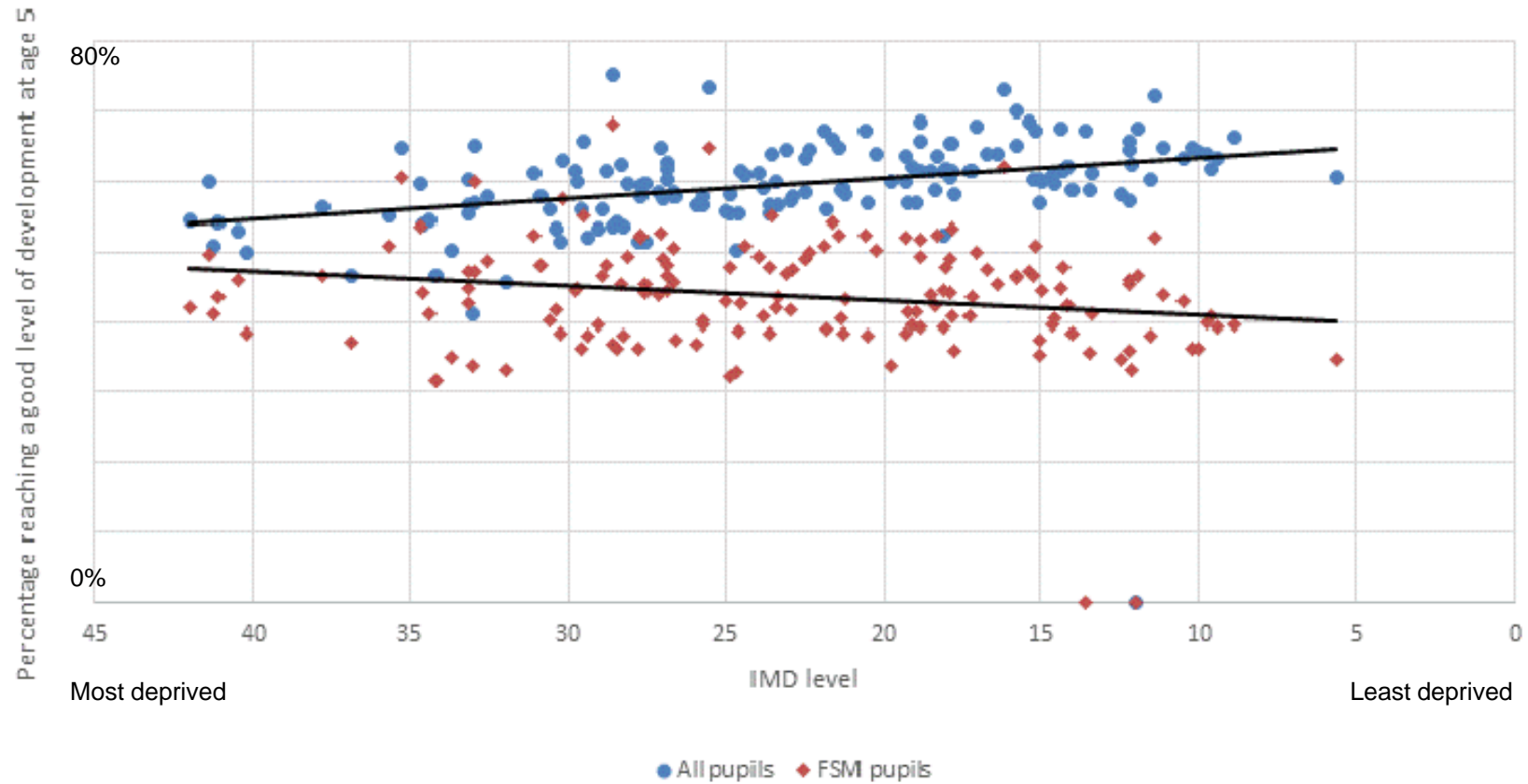


Fully adjusted = for parenting activities and psychosocial markers
 Kelly et al, 2010 in press



Level of development at end of reception

The percentage of children achieving a good level of development at the end of reception 2013/14, IMD 2015





Level of development at end of reception

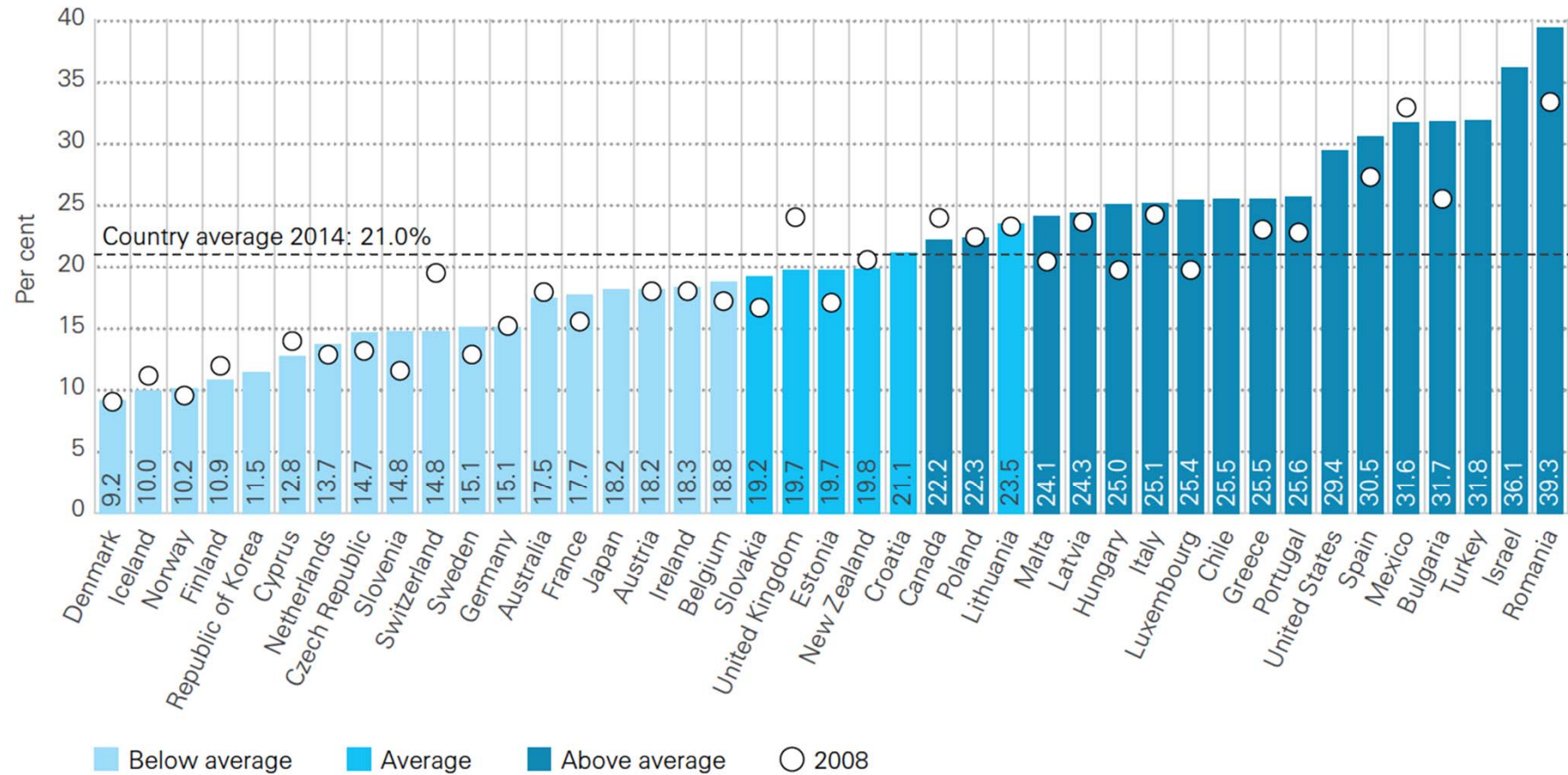
England and selected local authority areas	Level of development at age 5, 2013/14		
	All pupils (%)	FSM pupils (%)	Gap between all and FSM pupils (percentage point)
England	60.4	44.8	15.6
Hackney	64.9	60.7	4.2
Bath and North East Somerset	62.5	33	29.5



Child poverty (<60% median income)

Figure 1.1 An average of one in five children in rich countries lives in relative income poverty

Percentage of children aged 0–17 living in a household with income lower than 60 per cent of the median, 2014 and 2008

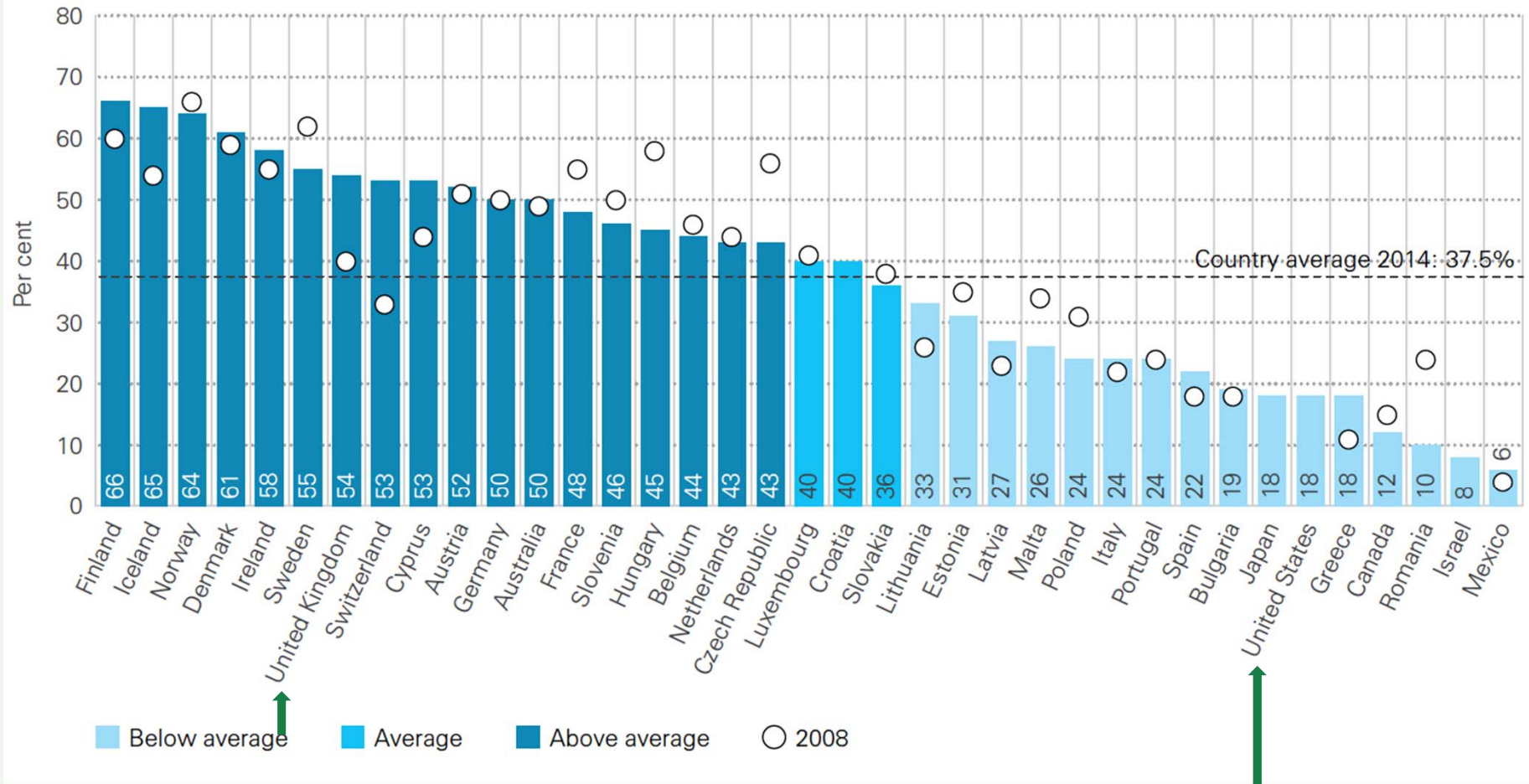


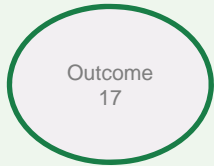


Reducing child poverty by social transfers

Figure 1.2 Finland, Iceland and Norway are most effective in reducing child poverty

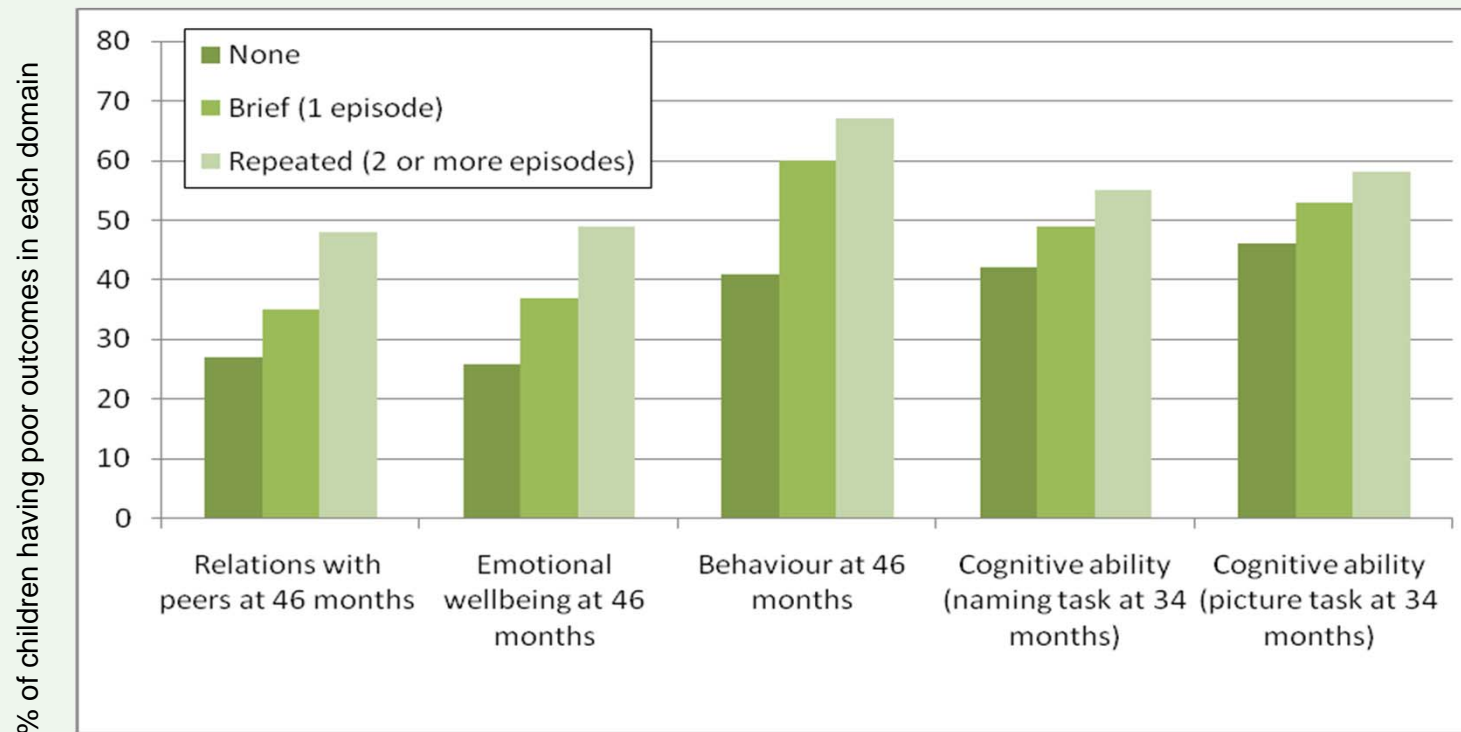
Percentage reduction in the rate of child poverty due to social transfers, 2014 and 2008





Increase in the number of parents with good mental health

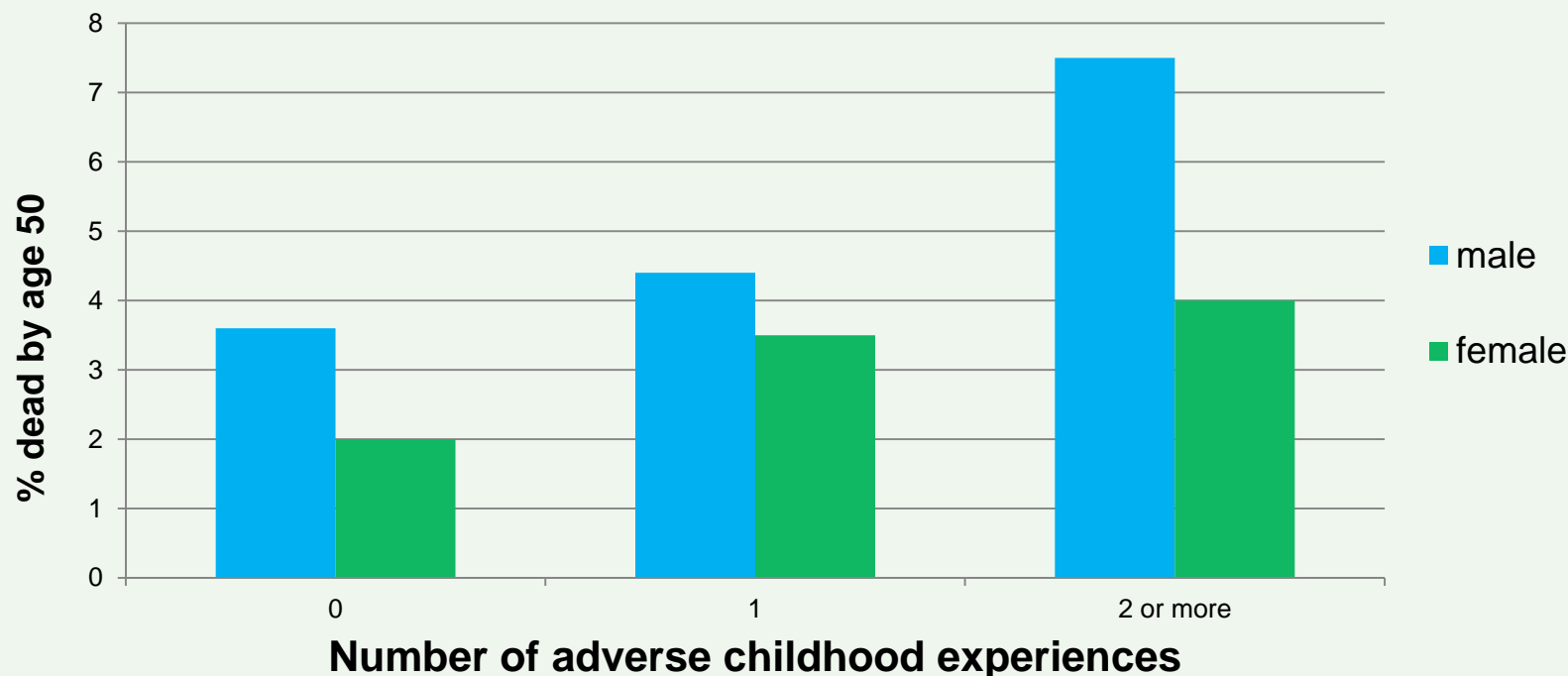
Poor child outcomes in relation to maternal mental health status (%)



Marryat L and Martin C (2010) *Growing up in Scotland: Maternal mental health and its impact on child behaviour and development*

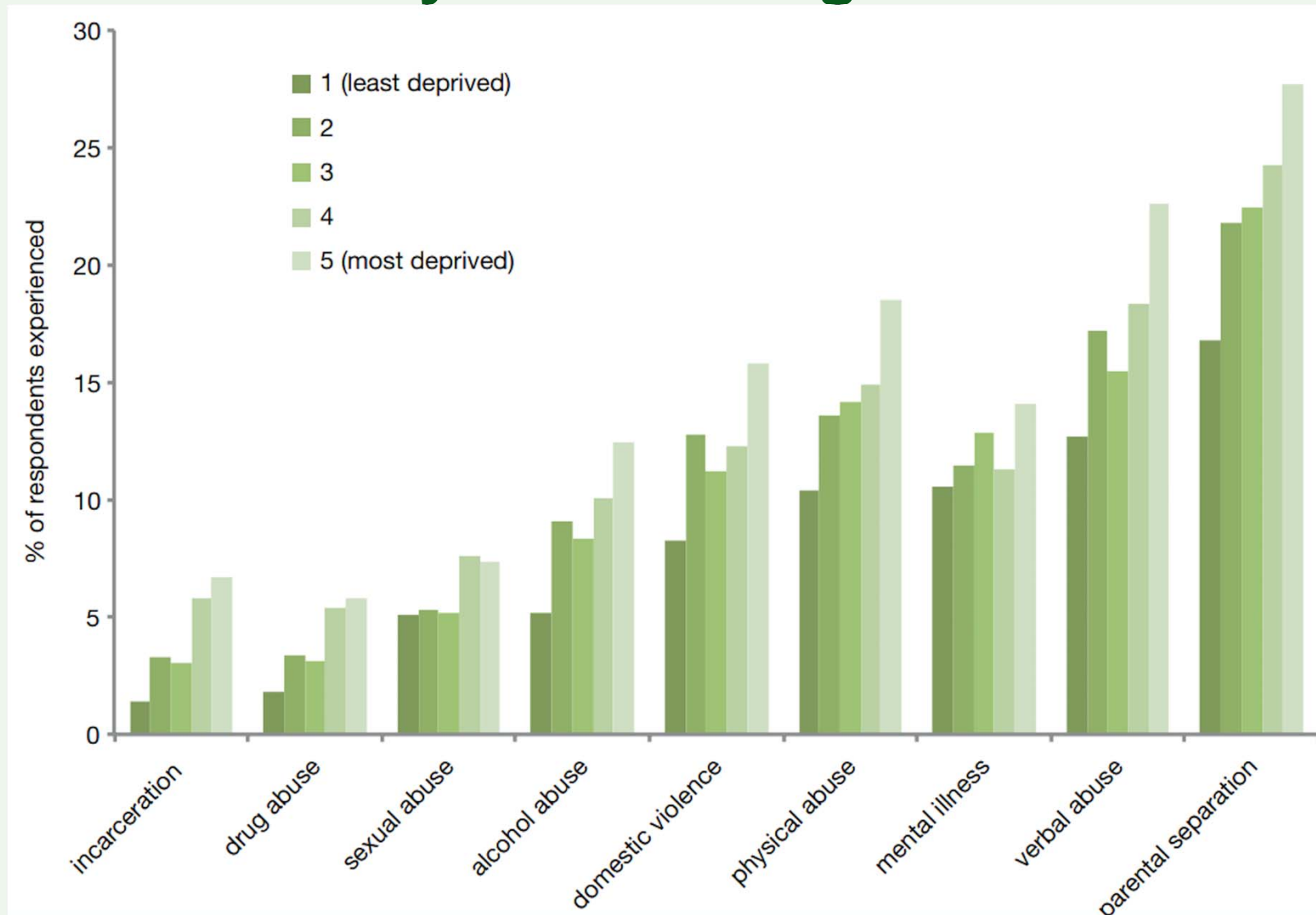


All cause mortality <50 years by prevalence of ACEs



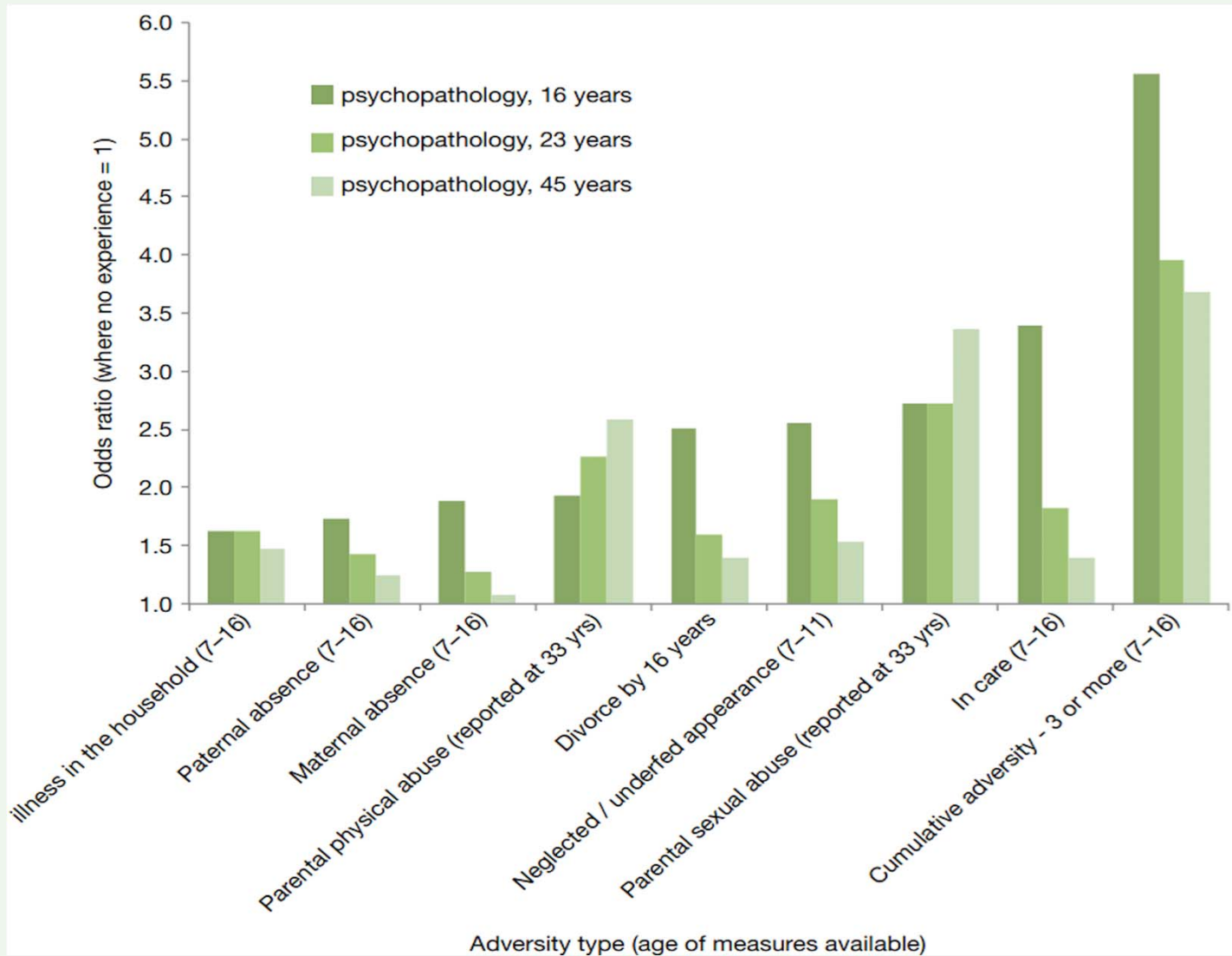


ACEs by income England 2013





Psychopathology by ACE type





Adverse Childhood Experiences: England

Preventing ACEs in future generations could reduce levels of:



Early sex
(before age 16)
by 33%



Unintended teen pregnancy
by 38%



Smoking
(current)
by 16%



Binge drinking
(current)
by 15%



Cannabis use
(lifetime)
by 33%



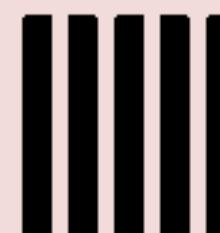
Heroin/crack use
(lifetime)
by 59%



Violence victimisation
(past year)
by 51%



Violence perpetration
(past year)
by 52%



Incarceration
(lifetime)
by 53%



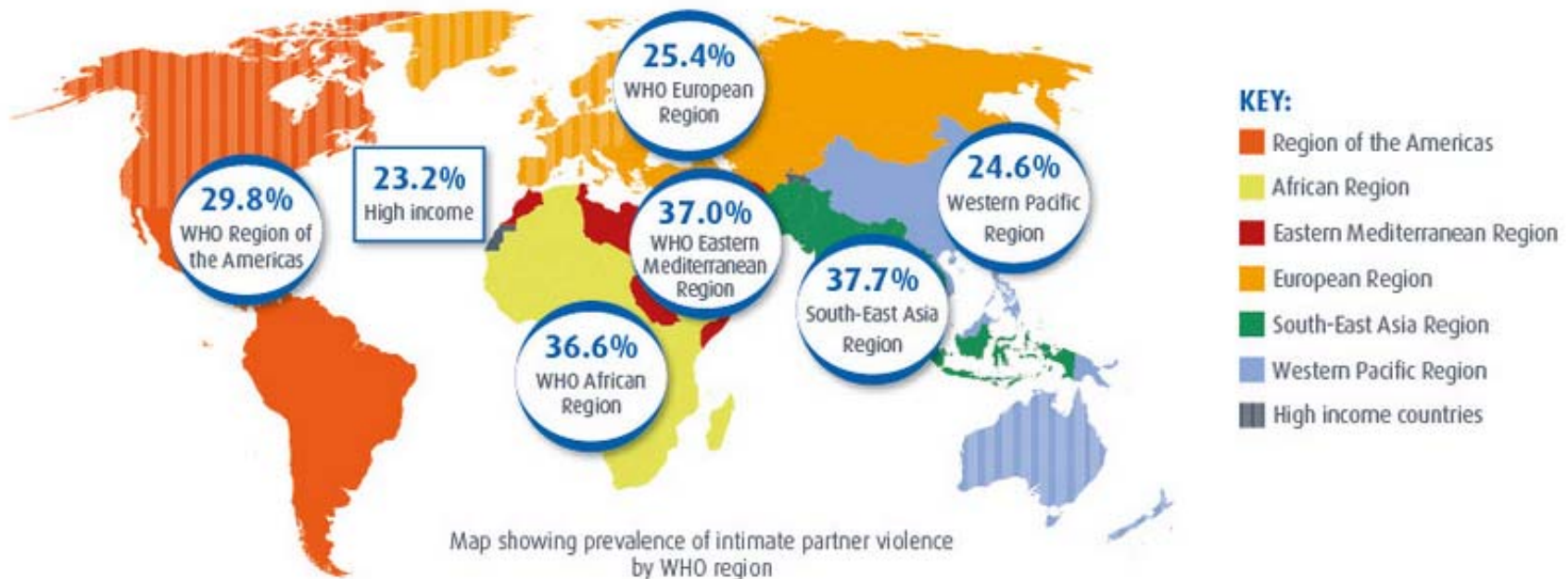
Poor diet
(current; <2 fruit & veg portions daily)
by 14%



Global prevalence

1 in 3 women

throughout the world will experience physical and/or sexual violence by a partner or sexual violence by a non-partner



Source: WHO Global and regional estimates of violence against women, 2013



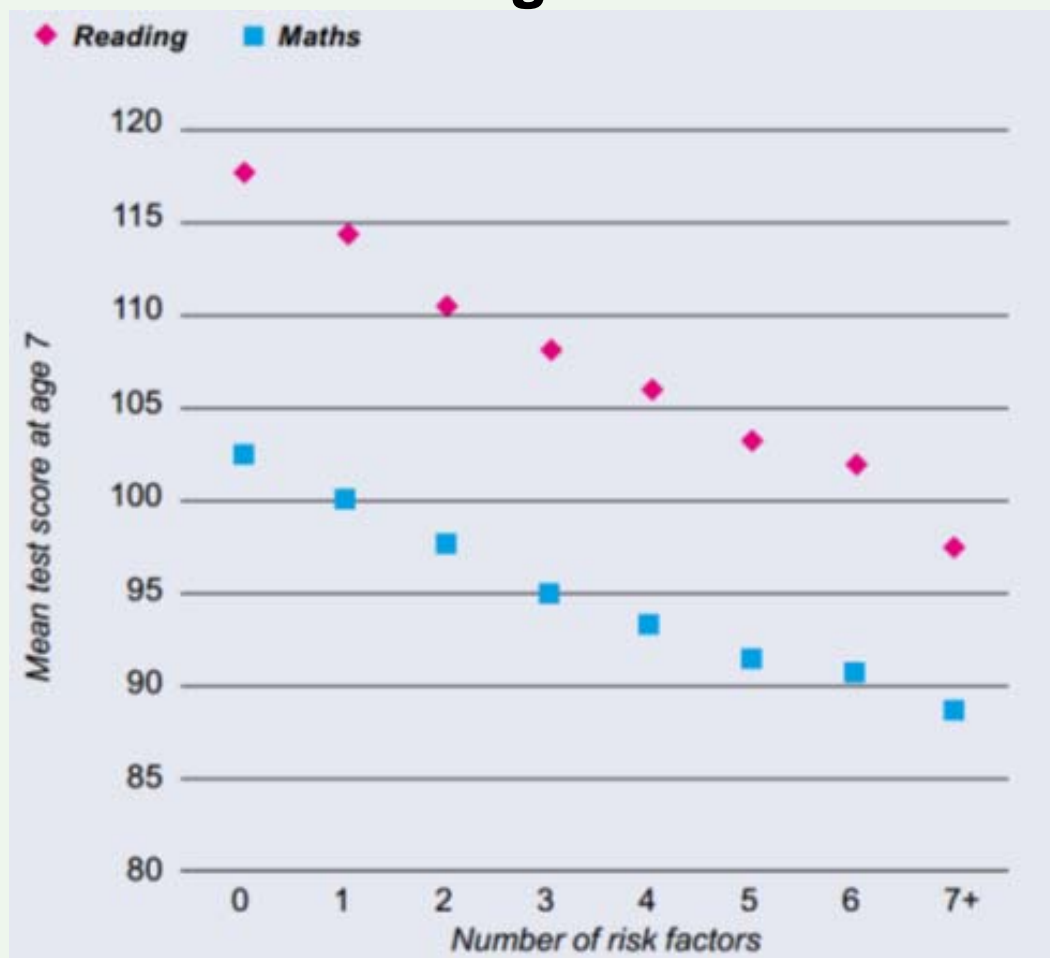
Marmot Review: 6 Policy Objectives

- A. Give every child the best start in life**
- B. Enable all children, young people and adults to maximise their capabilities and have control over their lives**
- C. Create fair employment and good work for all**
- D. Ensure healthy standard of living for all**
- E. Create and develop healthy and sustainable places and communities**
- F. Strengthen the role and impact of ill health prevention**



Inequalities in cognitive development by multiple factors, UK

Cognitive test scores at age 7

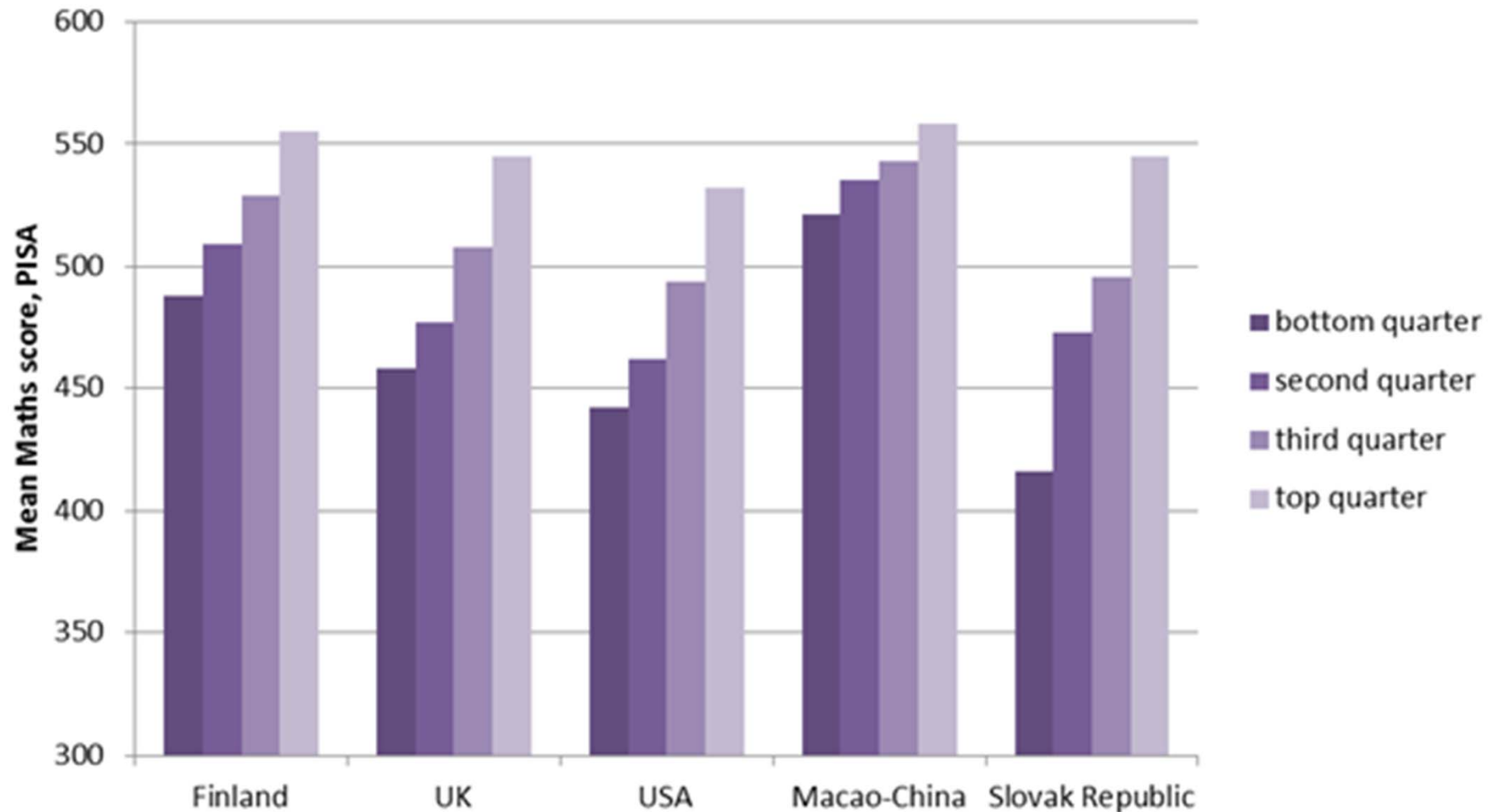


(ICLS, 2012)

- Low birth weight
- Not being breastfed
- Maternal depression
- Having a lone parent
- Median family income <60%
- Parental unemployment
- Maternal qualifications
- Damp housing
- Social housing
- Area deprivation (IMD)



Within country maths results by quarters of ESCS (economic social and cultural status), PISA, 2013



Source: PISA, 2013



Marmot Review: 6 Policy Objectives

- A. Give every child the best start in life**
- B. Enable all children, young people and adults to maximise their capabilities and have control over their lives**
- C. Create fair employment and good work for all**
- D. Ensure healthy standard of living for all**
- E. Create and develop healthy and sustainable places and communities**
- F. Strengthen the role and impact of ill health prevention**



Marmot Review: 6 Policy Objectives

- A. Give every child the best start in life**
- B. Enable all children, young people and adults to maximise their capabilities and have control over their lives**
- C. Create fair employment and good work for all**
- D. Ensure healthy standard of living for all**
- E. Create and develop healthy and sustainable places and communities**
- F. Strengthen the role and impact of ill health prevention**



Trends in income share among top income decile. US: 1913-2007

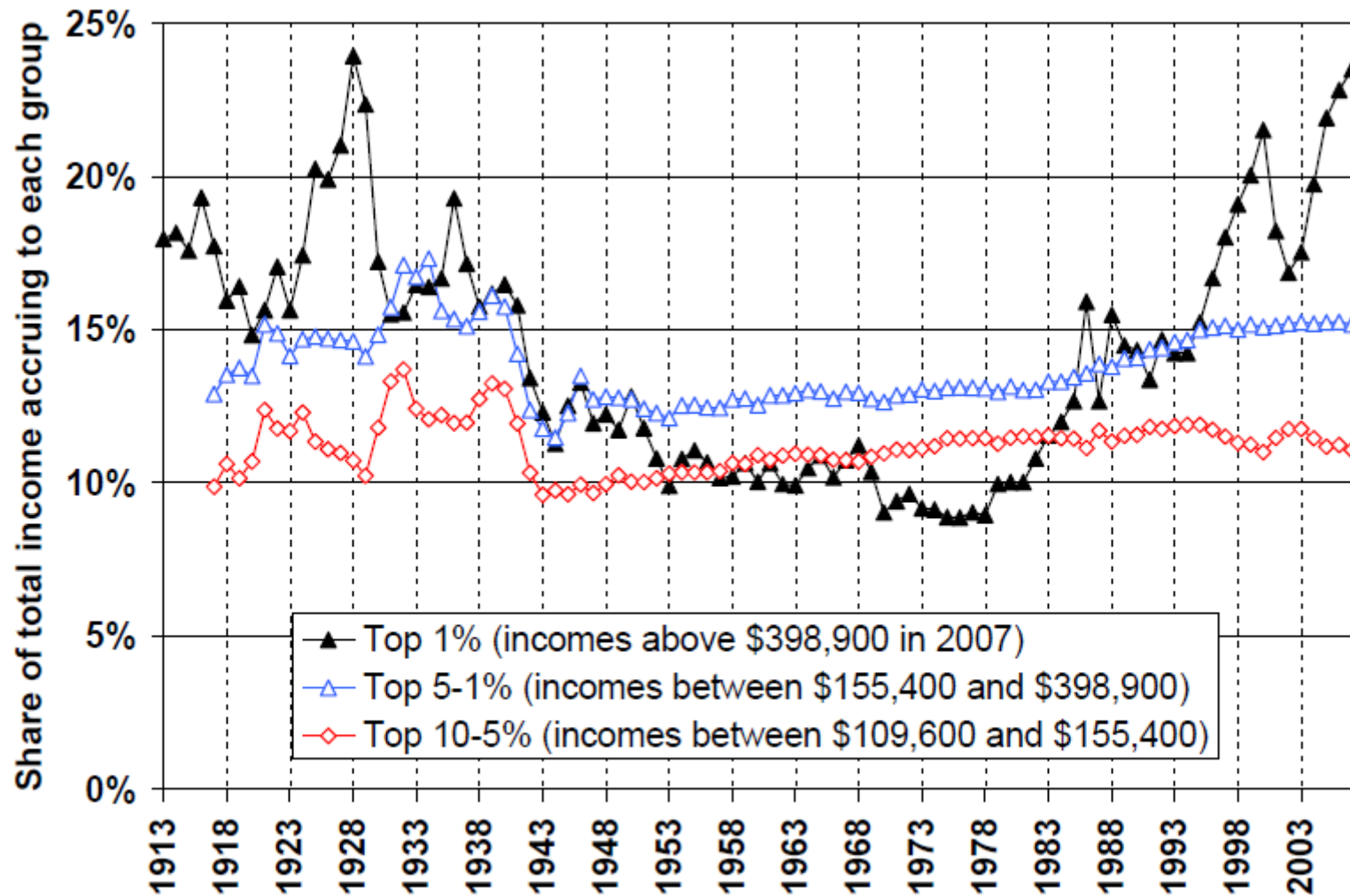




Chart 1: Change in real household income by percentile point: 2007–08 to 2020–21 [[Download the data in Excel](#)]

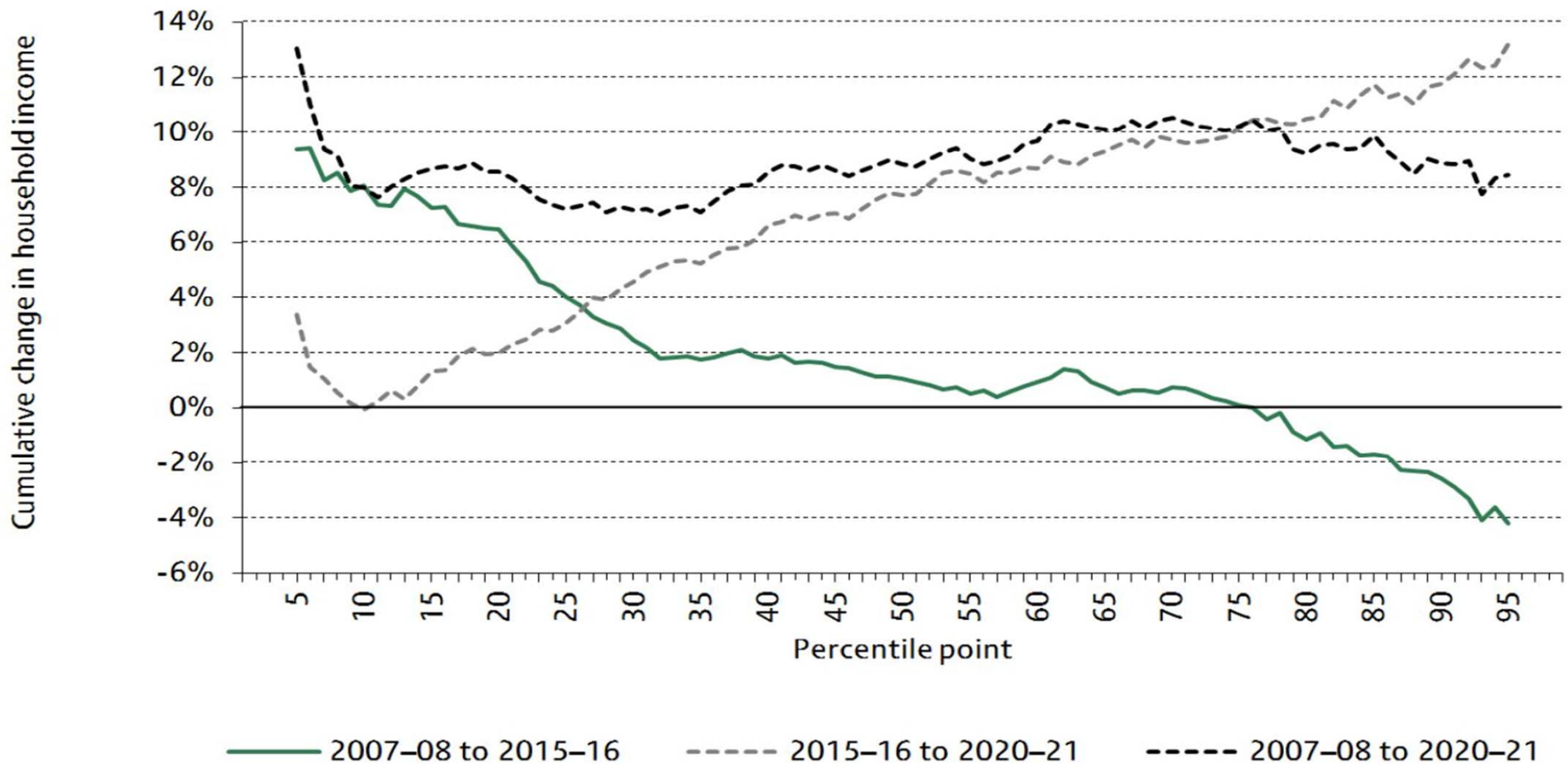
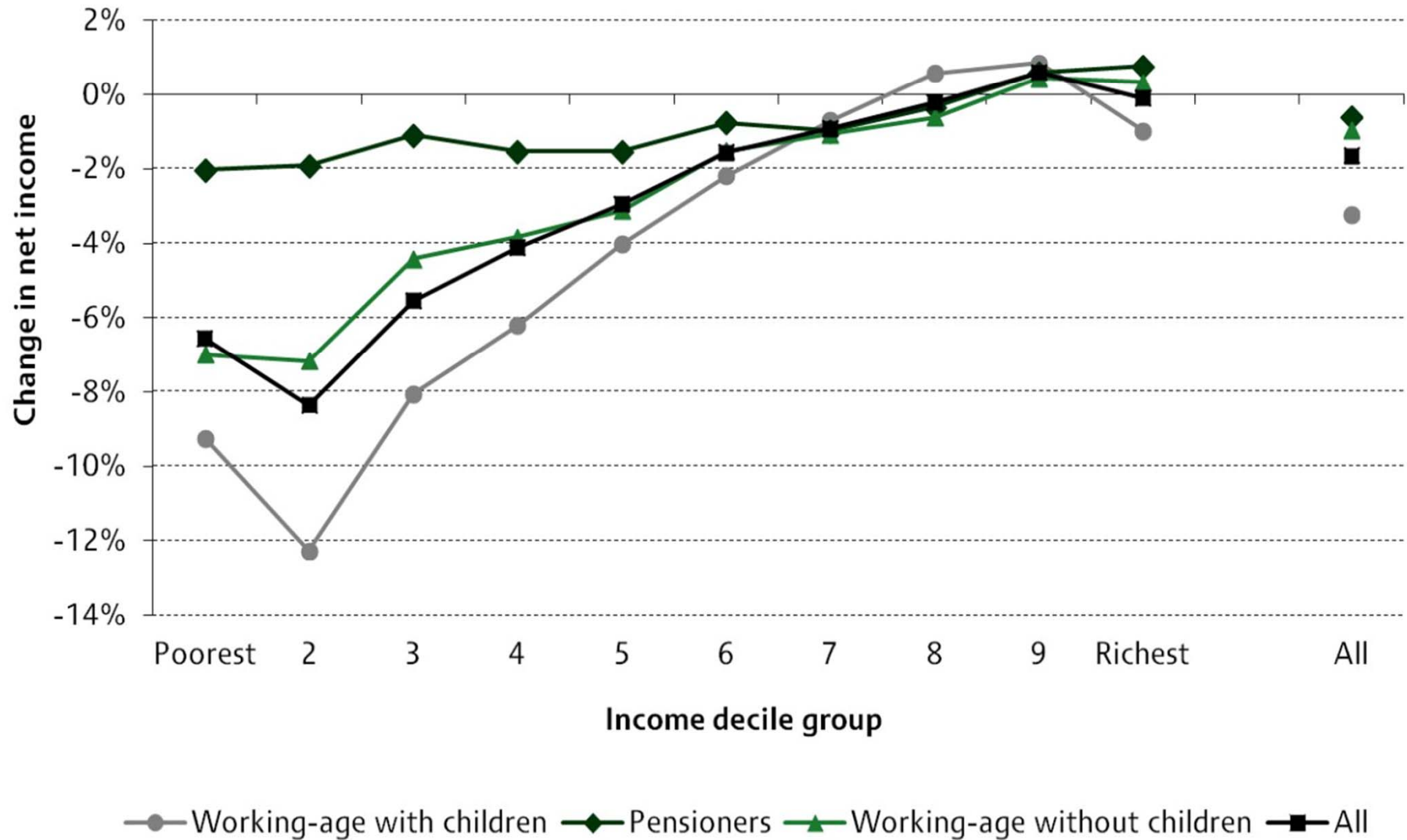
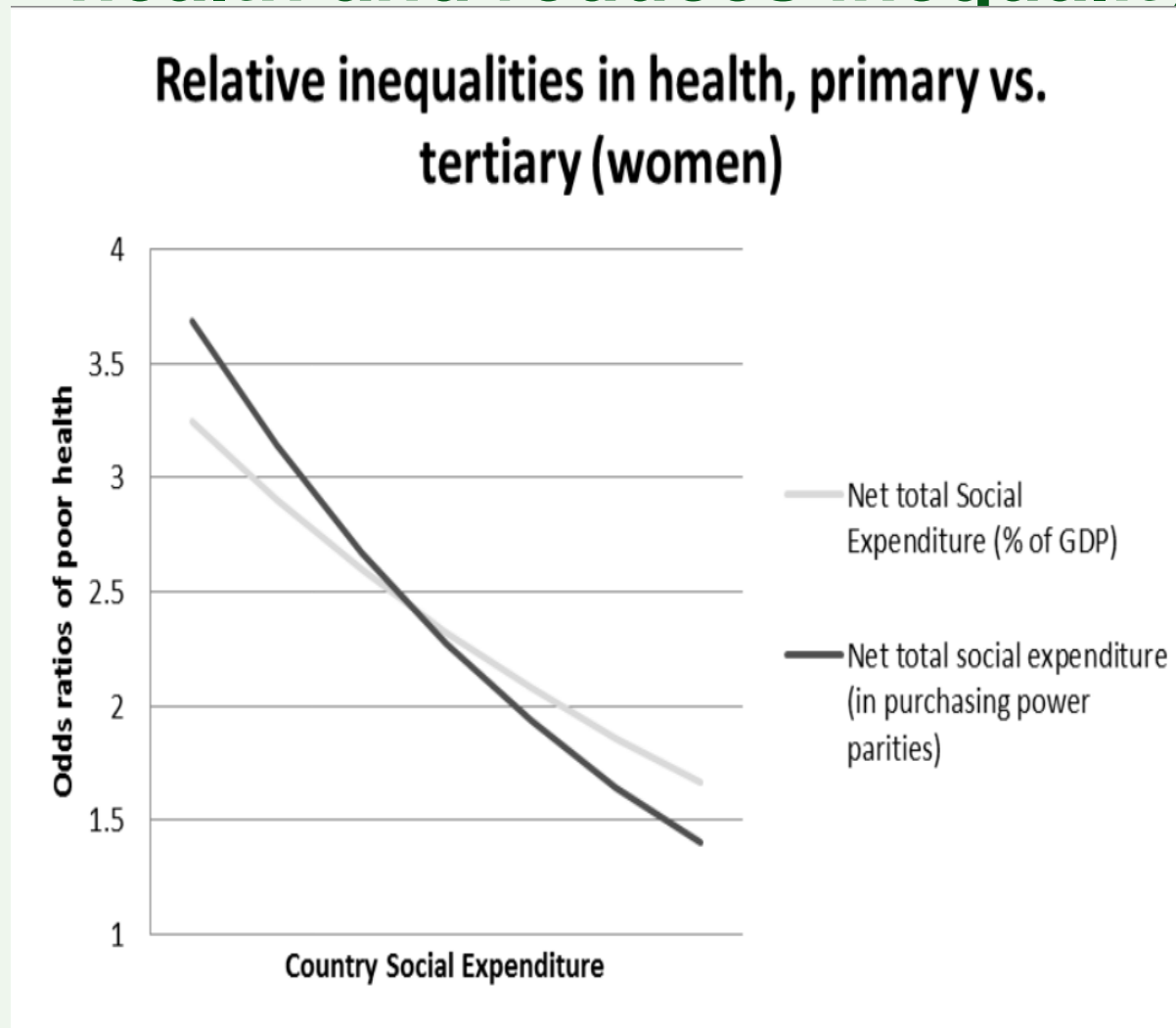


Chart 4: Long-run impact of tax and benefit reforms introduced between May 2015 and April 2019 by income decile and household type (including universal credit) [[Download the data in Excel](#)]





Shocking news: Welfare spending improves health and reduces inequality

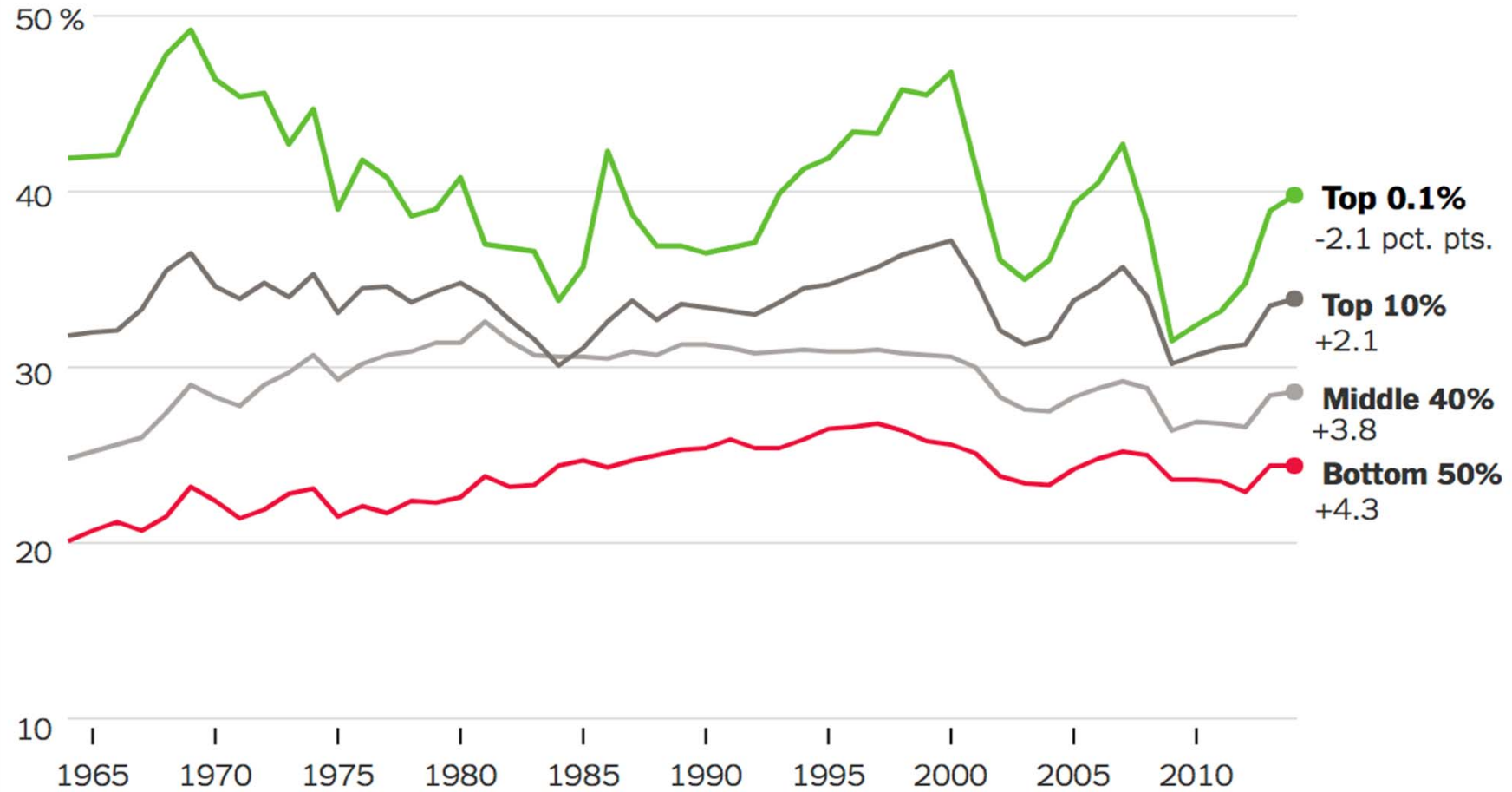


Source:
Lundberg et
al 2012



A Less Progressive Tax Code USA

Total tax rate by income group



By The New York Times | Source: Thomas Piketty, Emmanuel Saez and Gabriel Zucman



Change in after-tax income under tax bill, 2027

Top 0.1

+3.0%

Top 10

1.5

Middle 40

-0.6

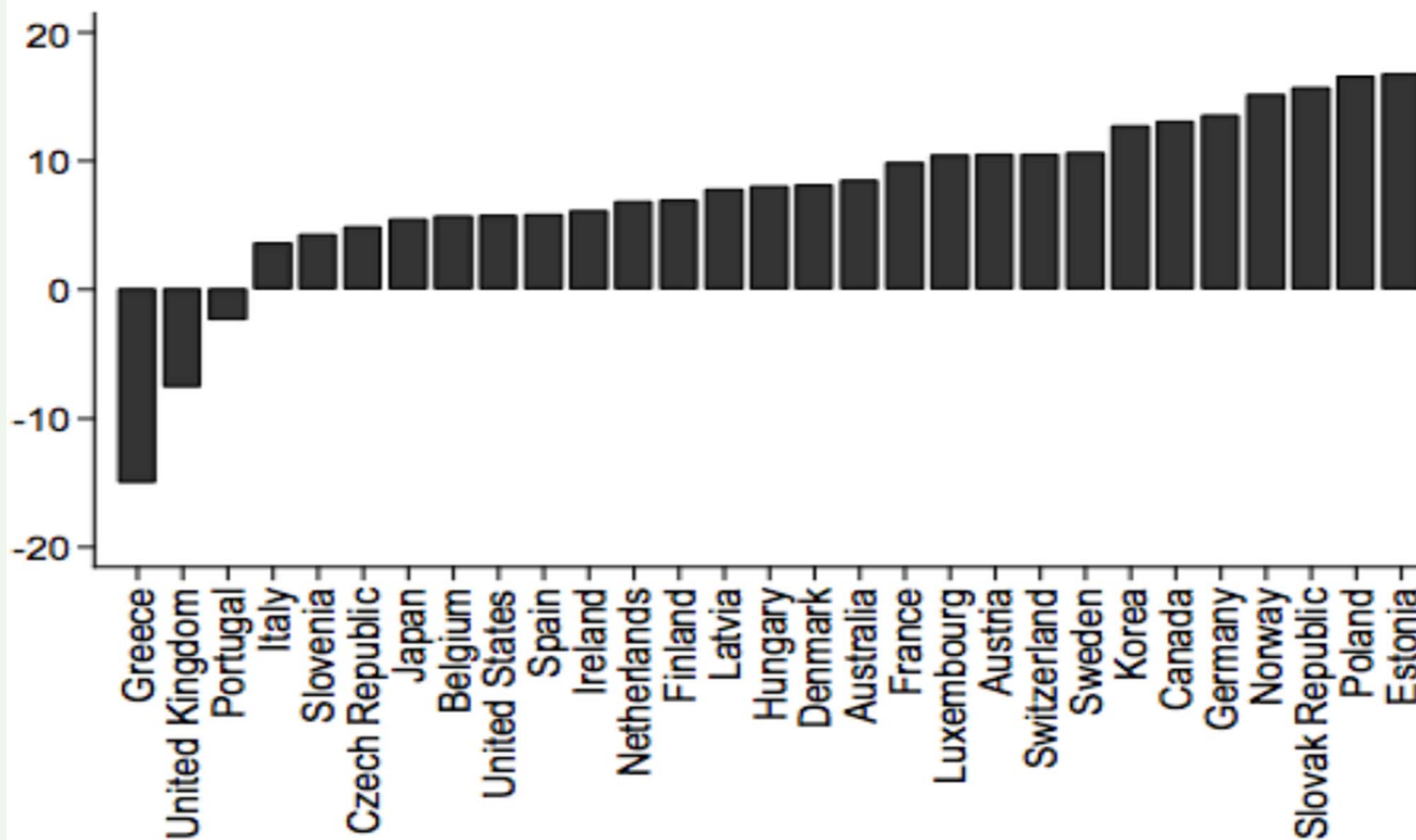
Bottom 50

-2.0

By The New York Times | Note: Includes effect of spending cuts from deficit reduction. Source: Estimate based on data from William Gale, Surachai Khitatrakun and Aaron Krupkin



Figure 5: International average real wage growth, 2007-15





UCL Institute of Health Equity



Report from the President

I spent the year as:

WMA President 2015-16



My two messages in a world of post-fact politics

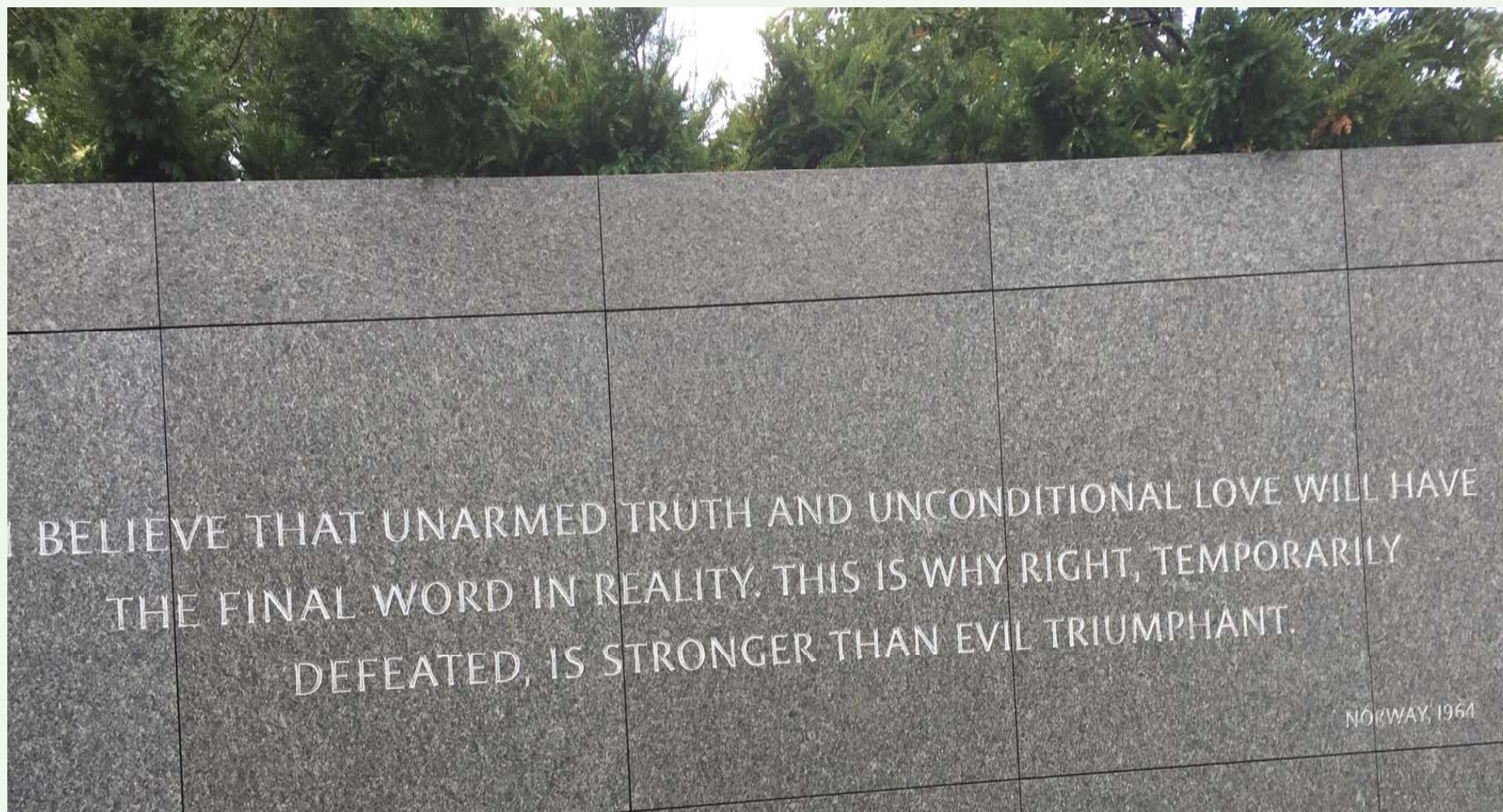
- Evidence-based policy
- Spirit of social justice

Remember: We said that

“Social injustice is killing on a grand scale”



Martin Luther King





Mission for Presidency (and life)

Health Equity

through action on

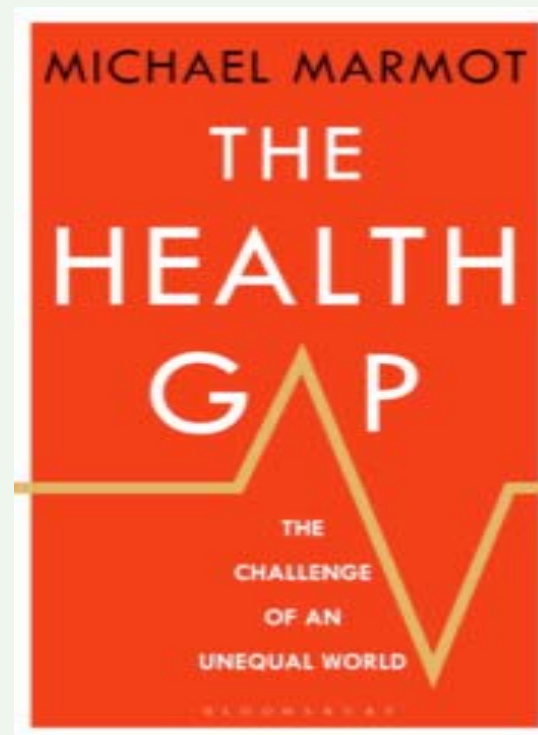
Social Determinants of Health



UCL Institute of Health Equity



Why treat people and send them back to the conditions that made them sick?





1. Workforce Education and Training
2. Working with Individuals and Communities
3. Health Sector as Employers
- 4. Working in Partnership**
5. Workforce as Advocates



LIFE EXPECTANCY AT BIRTH

	MALE	FEMALE
INDIGENOUS AUSTRALIAN*	69.1	73.7
NON INDIGENOUS AUSTRALIAN*	79.7	83.1

<http://www.aihw.gov.au/deaths/life-expectancy/>



UCL Institute of Health Equity

UCL



Tharawal
Aboriginal Corporation

"Your Health, Our Commitment"





Tharawal Aboriginal Medical Service

At Tharawal A.M.S. we have;

G.P.s

Registrar Doctors

Students

Specialists





The popular Belly Cast Program

We also have a
Breast Feeding
Support
Program



What we do

Educational gatherings before pregnancy, during pregnancy and after birth of baby.

Pregnancy and Postnatal Care at clinic or at their home.

Care for women and baby after the delivery.

Ongoing support , education, and baby checks up to the youngest child is five.

Development of resources for families around parenting.



KEY PERFORMANCE INDICATORS

In 2014, 100% of Souths Cares 'School to Work' Students achieved the HSC and moved into employment or further education.

Over 4000 of direct community engagement by South Sydney Rabbitohs players annually.

Donations valued at over \$200,000 provided to the community in 2014/15 Financial Year.



On-site Outreach Services

We provide key services for our clients and community that is in a safe and private environment on a weekly basis

This results in a speedier outcome

Legal Services

Department of Housing

Centrelink

Disability Support



Waranwarin

20 children graduated in 2015

60 children enrolled 2015



Family Support Program

The Deadly Homework Club

**Parenting Programs in partnership with
Brighter Futures**

**Community Kitchen held at Waranwarin
Child and Family Centre**

and more





Every family
complete adult and
child health checks
link to speech,
audiology,
optometry and
dental



Every family attends either;

Triple P parenting,

123 Magic

or grass roots parenting.



Weekly clinics held in our medical building



Drug & Alcohol

Education

Awareness

Support in rehabilitation



GOOD TUCKER ALL ROUND

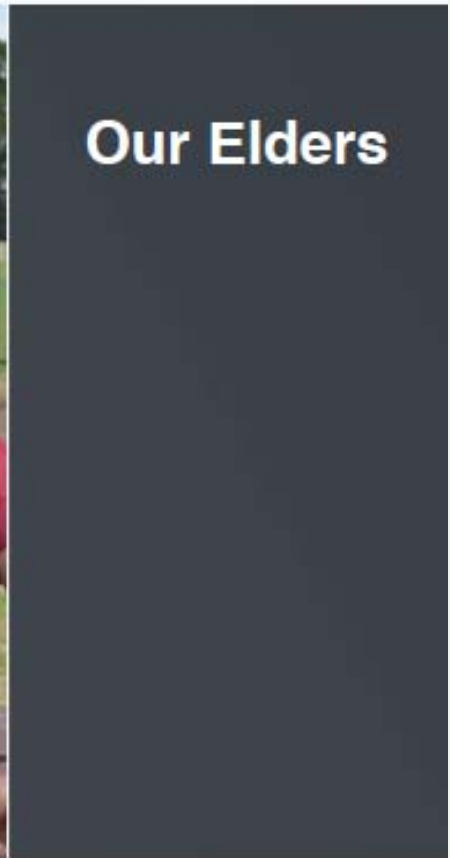
FRUIT & VEGETABLE DELIVERY



The freshest seasonal fruit and vegetables delivered to your door every week

Our community members volunteer to pack the boxes ready for delivery

Working together with community and local businesses to ensure quality healthy produce is provided for our mob





Bringing Them Home



UCL Institute of Health Equity





Reaction to my discussion of economic inequalities

Welcome to Fantasy Land
