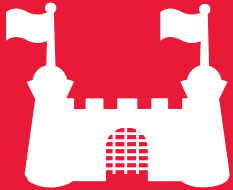




Trinity's Treasure Trail



Trinity College isn't just a place for students and professors to study and learn ... it's also a treasure island in the middle of Dublin with lots of hidden corners to explore.

Come with us on a journey through 15 of Trinity's secret spots and earn the right to call yourself a "Citizen of Trinity". You can complete the trail starting from any area and moving in a clockwise direction, but remember that buildings may be closed at some times.

Going to College should always be this much fun!





Gather Point: Under the Front Arch

Question One:

Walk out from under the arch toward College Green. Look for the statue with the name Goldsmith on its base. Goldsmith wrote the poem: Hickory, dickory, dock, The mouse ran up the clock. The clock struck one, The mouse ran down, Hickory, dickory, dock

What is Goldsmith holding in his hands?

Answer: a and a

Become an expert! Goldsmith is a famous author to us now, but when he was a student at Trinity, he nearly failed! Rather than finding a job after College he travelled around Europe playing his flute for money. Later he settled down in London and became a writer.

Now pass through the entrance of Trinity and go straight ahead until you are standing on the cobblestones between the two buildings with columns with an identical façade.

Question Two:

You may not be able to find Goldsmith's mouse, but can you find the famous Trinity clocks? (hint: remember to look up high!) What colour is the clockface?

Answer:

Become an expert! There are three of these clocks on campus – inside and outside of Front Gate and over the Dining Hall. The colour is important as a symbol of Trinity College and the numbers on the clock face use a system known as Roman numerals. This system represents numbers using the letters I, V, and X.

Question Three:

Face towards the inside of the campus. Now turn left at the building with the columns on your left (the College Chapel). Follow the path around the side of the building until the end where, on your left, you'll see a set of steps. Go up the stairs and look to your left. This is the smallest graveyard in Ireland! Name the people buried here (hint: their names are on the plaques on the wall)

Answer: b and L

Become an expert! The area today called College Green was once known as Hoggen Green from the old Norse word haugr meaning mound. The cemetery at College Green consisted of several burial mounds, some of which are within what is today Trinity College Campus. Although Trinity seems very central now, at that time, this part of town was not thought of as being "in" Dublin, but rather "near" Dublin.



Gather Point: In front of the Printing House

Question One:

This building is called the Printing House, and it was designed to look like a Greek temple. There are four different shapes outlined on the door: a rectangle, a square, a diamond and a ... What is the fourth shape you see?

Answer:

Become an expert! The columns on this building are of the 'doric' style, which means that the tops are quite simple and the shafts fat. On the Campanile and the Museum Building you can find another kind of column, with leaves at the top, called a "Corinthian" capital.

Question Two:

Facing the Printing House façade, turn left and pass through between the buildings to enter Library Square. In the centre of Library Square there is a sculpture by Henry Moore. What is this sculpture made of?
a. ice cream b. glass c. wood d. bronze

Answer:

Become an expert! This sculpture is called "Reclining Connected Forms". This is called an "abstract" sculpture because it doesn't represent anything real, but is supposed to give you a certain kind of feeling of reality.

Question Three:

From the middle of Library Square, walk towards Front Gate until you reach the cobblestone pavement. Turn around and look back at the statue to your left. This man was the Head (or "Provost") of Trinity College from 1888-1904. What was his name?

Answer: George

Become an expert! It was during this man's time as Head of Trinity that women were first allowed to study here. He didn't think it was a great idea, but it certainly has caught on: today 60% of Trinity students are women.



Gather Point: At the large Spherical Sculpture in front of the Berkeley Library

Question One:

This sculpture is made of bronze and called "Sphere into Sphere." How much does this sculpture weigh?
a. 2 grammes **b.** 2 kilos **c.** 2 pounds **d.** 2 tonnes

Answer: _

Become an expert! The man who made this sculpture was named Arnaldo Pomodoro. His surname means "tomato" in Italian: do you think his sculpture looks like a tomato?

Question Two:

Facing away from the Berkeley Library, go forward down the stairs, and you will see another open square in front of you (this is called New Square). Take a right and go to the entrance of the next building, called the Museum Building.

What type of animal is carved on the sides of the entrance to the building (hint: look amongst the leaves near the top of the door)?

Answer: _ _ _

Become an expert! This building was designed to hold Trinity College's natural history collections. If you go inside you can see a few remaining items from this collection including skeletons of Giant Irish Deer and stone samples from all over Ireland.

Question Three:

With your back to the Museum Building, turn right and walk around the Square until you find House 39.
What famous playwright lived here?

Answer: Samuel _ _ _ _ _

Become an expert! This man's most famous play is called "Waiting for Godot" and involves two men waiting for someone ... who never shows up!



Gather Point: At the entrance to the Old Library

Question One:

This Library is the second most popular tourist attraction in Ireland, with almost 500,000 people a year visiting it. Enter the exhibit area (entrance to the right after you enter the shop). On your right, discover the history of the Book of Kells and then pass through to the dark room (called the "Treasury") where the Book of Kells is displayed in a big glass case. What language is the Book of Kells written in?

Answer: _ _ _ _

Become an expert! The Book of Kells was hand written by monks, who would spend years making copies of the biblical Gospels like this one. When they made mistakes, they couldn't erase them, so instead they placed a red cross next to the error.

Question Two:

Go up the stairs at the entrance of the Long Room. How many books does the Long Room house?
a. 200 **b.** 2,000 **c.** 200,000 **d.** 2,000,000

Answer: _

Become an expert! This Library is over 250 years old, and is still a place where people work. Unlike the old days, however, they now can have light and heat in the building, which was forbidden in the days of candles and open fires because of the fear the books could be burnt.

Question Three:

About half way down the Long Room on the left-hand side is a glass case containing the oldest harp in the country. What country is this harp a symbol of?

Answer: _ _ _ _ _

Become an expert! Images of this harp can be found in a lot of places: do you have any Euro coins in your pocket? Can you find one with a harp on it? Does it look the same as the one in the case?



Gather Point: In front of the Campanile

Question One:

This building is called the Campanile, or bell tower. You can't see the bell, because it is behind the screened windows over your head: how many windows are there?

Answer: _ _ _ _ _

Become an expert! The statues on the four corners above the arches each represent one of the original subjects studied at Trinity. You can tell which one is which by what they hold. For example: can you find the statue holding a book and a cross? It represents Divinity. The other represent Law, Science and Medicine.

Question Two:

Face the Campanile with your back to Front Gate. On either side of the Campanile are two statues. Find the statue that is holding a book. What is the name of the person represented in the statue?

Answer: _ _ _ _ _

Become an expert! This man wrote a book called 'A History of England in the Eighteenth Century'. It is twelve volumes long and took him twelve years to write!

Question Three:

Stand facing the statue and turn to your right. On the right-hand side of the passageway in front of you is a low building called the 1937 Reading Room. This building houses a Hall of Honour to the Trinity College dead from the First World War. Find the word written above the entrance of this building. This is the name of the Greek goddess of Victory, and also of a brand of runners, though it is spelled a little differently today (you will see an H on the building where there is an E today) What is this word?

Answer: _ _ _ _ _

Become an expert! Although the front section of the building is rectangular, the Reading Room itself has eight sides (so does Front Arch). This building is open 24 hours a day for students.

Final Challenge

Use the letters highlighted from the clues in the Treasure Trail to spell out a secret message.

 Q2  Q1  Q1  Q2  Q3A  Q3  Q1  Q2

 Q1  Q3  Q3  Q3B  Q2  Q3  Q2

Trinity College Citizenship Acquired

Date: _____

Signature: _____

Trinity College Dublin Campus Map



Gather Points

-  Under the Front Arch
-  In front of the Campanile
-  At the entrance to the Old Library
-  At the large spherical sculpture in front of the Berkeley Library
-  In front of the Printing House



Trinity Week has been organised by Trinity Long Room Hub on behalf of the Faculty of Arts, Humanities and Social Sciences

TRINITY WEEK

MOL AN
tSeomra
Fhada
COLÁISTE NA
TRÍONÓIDE

TRINITY
Long
Room
HUB



TRINITY COLLEGE DUBLIN
COLÁISTE NA TRÍONÓIDE, BAILE ÁTHA CLIATH

THE UNIVERSITY
OF DUBLIN

We would like to thank our sponsors:

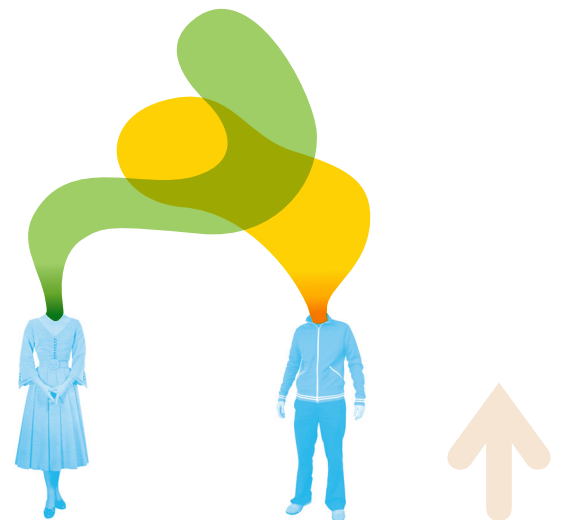
 **THE IRISH TIMES**
irishtimes.com


Dublin City
Baile Átha Cliath

 irishrail.ie

 DART


Children's Books Ireland
Leabhair Phoblaití Éireann



Design: Red&Grey Design - www.redandgreydesign.ie