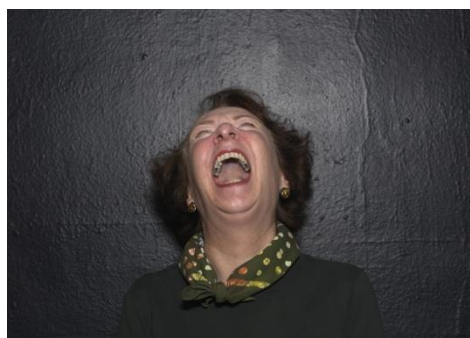


**Artist** Alec Soth  
**Title** Mary (2014)  
**Medium** exhibition print  
**Notes** Donated in 2016 by the Artist;  
facilitated by the Douglas Hyde Gallery  
Exhibited as part of 'Hypnagogia' at  
the Douglas Hyde Gallery, 5<sup>th</sup> August -  
21<sup>st</sup> September 2016



b. 1969, Minnesota, USA

Alec Soth was born in 1969 in Minneapolis. He studied at Sarah Lawrence College in Bronxville New York, originally intending to become a painter. Regarded as a leading figure in contemporary photography, Soth cites a lecture given by photographer Joseph Sternfeld as having inspired him to travel across America and photograph his experiences. For the past twenty years Soth has focused on just that, capturing the often overlooked areas of the mid-western and southern United States, photographing urban and rural landscapes as well as composing intriguing character portraits. The artist has described his style as lyrical rather than documentary.

Soth has published over twenty-five books of photography and has exhibited internationally in group and solo shows. Notable group shows include the São Paulo Biennial in Brazil (2004), the Whitney Biennial at the Whitney Museum of American Art in New York (2004) and Timezone 8 Editions in Beijing, China (2005). Survey exhibitions of Soth's work have been organised by the Jeu de Paume in Paris (2008), Walker Art Center in Minnesota (2010), and at the Media Space in London (2015). The artist has been the recipient of several awards, including the McKnight Foundation Photography Fellowship (1999) and the Guggenheim Fellowship (2013). His works are represented in the permanent collections of the Museum of Contemporary Art, Chicago; the Museum of Fine Arts, Houston; the San Francisco Museum of Modern Art and the Whitney Museum of American Art in New York.

### ***Hypnagogia***

Alec Soth's touring 'Hypnagogia' exhibition was held at the Douglas Hyde Gallery in 2016. The exhibition included photographic works from some of the artist's best known series, including 'Songbook' (2015), 'Broken Manual' (2010) and 'Sleeping by the Mississippi' (2004). The title for this exhibition came to the artist in the middle of the night; the term hypnagogia refers to the transitional stage between wakefulness and sleeping, a time when the body may experience hallucinations, lucid dreams or sleep paralysis. Though the works chosen for the exhibition span the artist's career, the exhibition was conceived to suggest a journey through a hypnagogic state, with each work relating to the theme of dreams and

hallucinations. Facilitated by John Hutchinson, Director of the Douglas Hyde Gallery 1991 to 2016, the artist donated three exhibition prints from 'Hypnagogia' to The Art Collections of Trinity College Dublin.

The information in this article is sourced from [www.alecsoth.com](http://www.alecsoth.com) , [www.skny.com/artists/alec-soth](http://www.skny.com/artists/alec-soth) and [dougashydegallery.com/alec-soth-gallery-1/](http://dougashydegallery.com/alec-soth-gallery-1/)