

# ZEN INK PAINTING



悟り

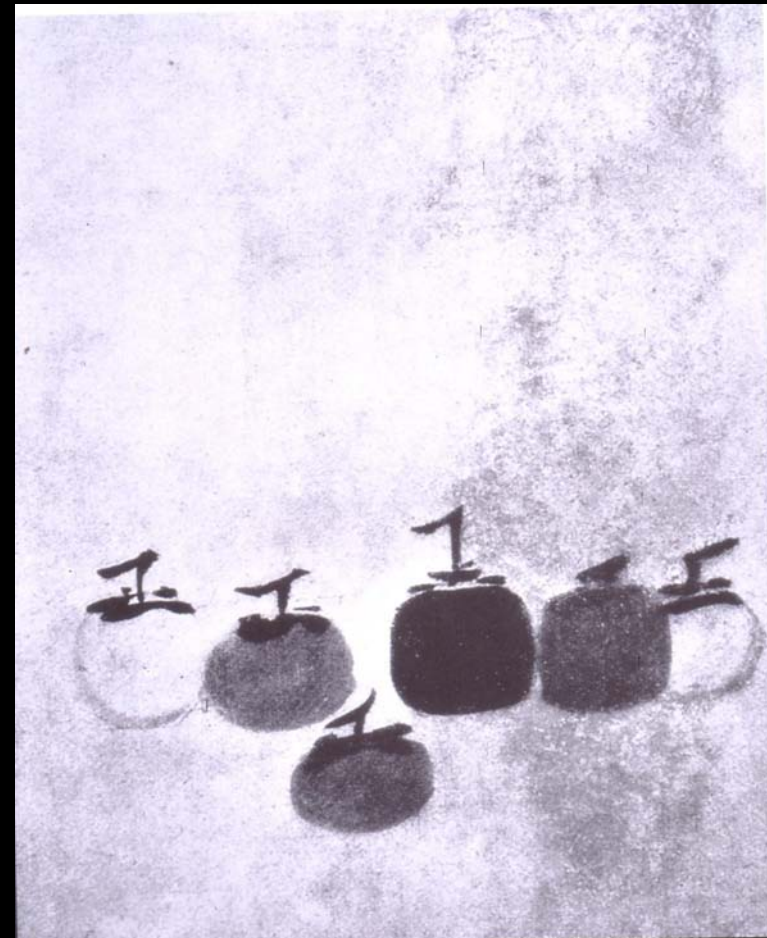
*satori*



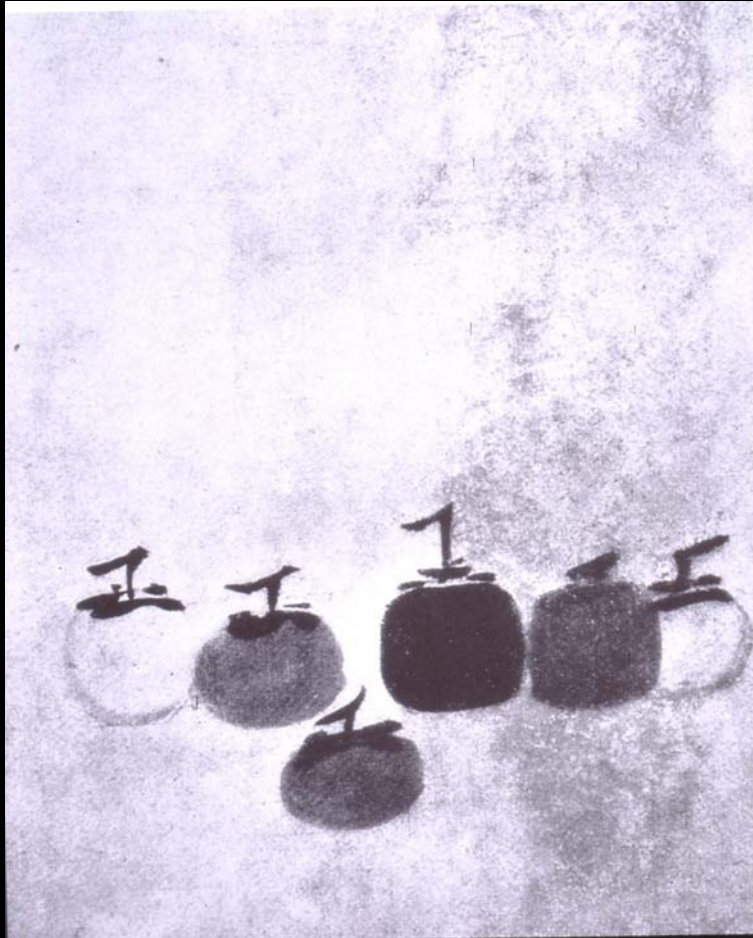


1) Li Di Chinese artist.. 12<sup>th</sup> century ink and light colours currently displayed Yamato Bunkan, Nara Prefecture.

2) Mu-chi/ Mu Qi (Chinese active, 1279 : Six Persimmons, 13<sup>th</sup> century. Ink on paper (Kyoto).







Li Di, Chinese artist, from the Song period (12<sup>th</sup> century) influential on Japanese artists. ink and light colours currently displayed Yamato Bunkan, Nara Prefecture.



Zen scroll in a temple tea room in Sangen-in  
Daitoku-ji, Kyoto



Crane, Kannon & Monkey Hanging scroll by Mu-Qi (Chinese) ink on silk (triptych)  
active 1279. Displayed in Daitokuji, Kyoto.





'Mokuan', detail from a hanging scroll by Zen monk, Kao Ninga. (active mid 14<sup>th</sup> century). Ink and colour on paper. Priv. Collection.

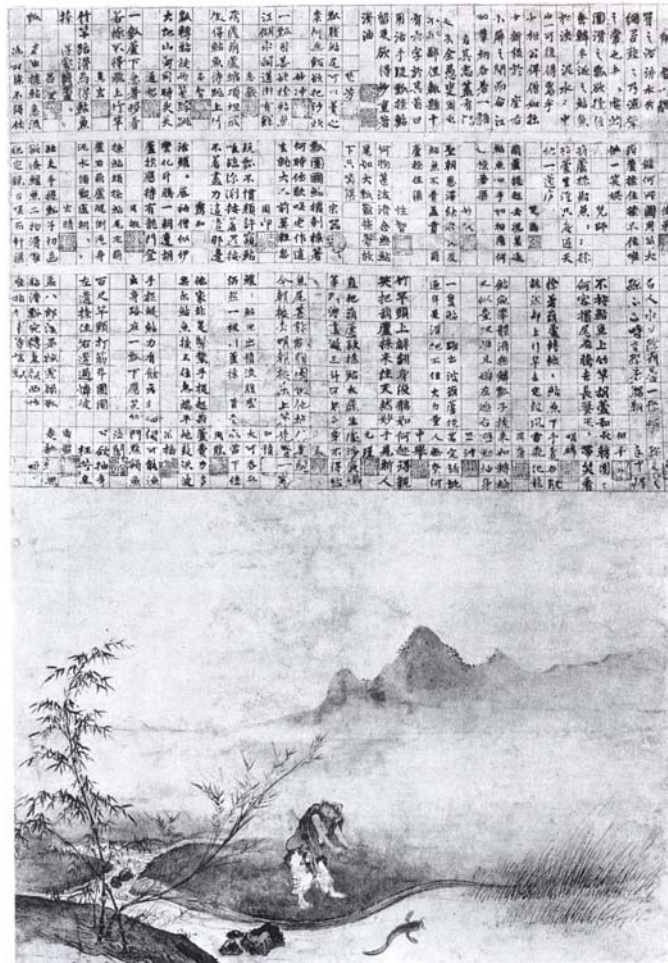


'The Four sleepers' by  
Mokuan Reien

( active first half of 14<sup>th</sup>  
century).

Hanging scroll, ink on paper,  
Maeda Foundation, Tokyo.





‘Catching a catfish with a gourd’ by Josetsu.

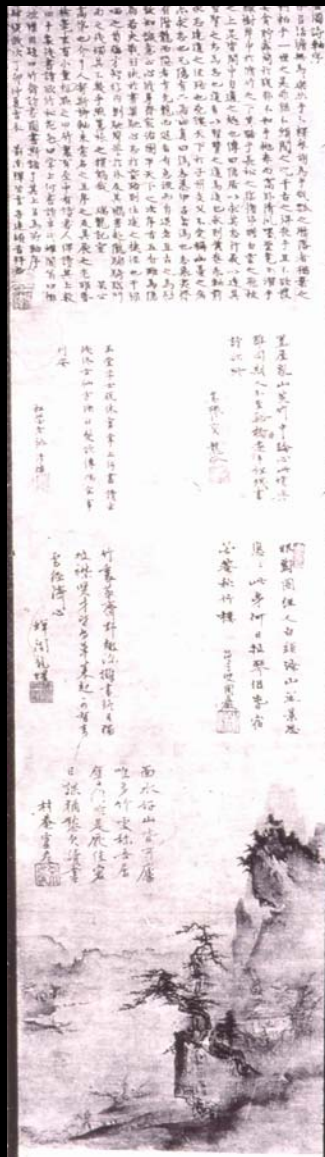
C. 1413. Hanging Scroll ink and colour on paper.  
Taizoin, Myoshinji, Kyoto



Detail, 'Catching a catfish with a gourd'

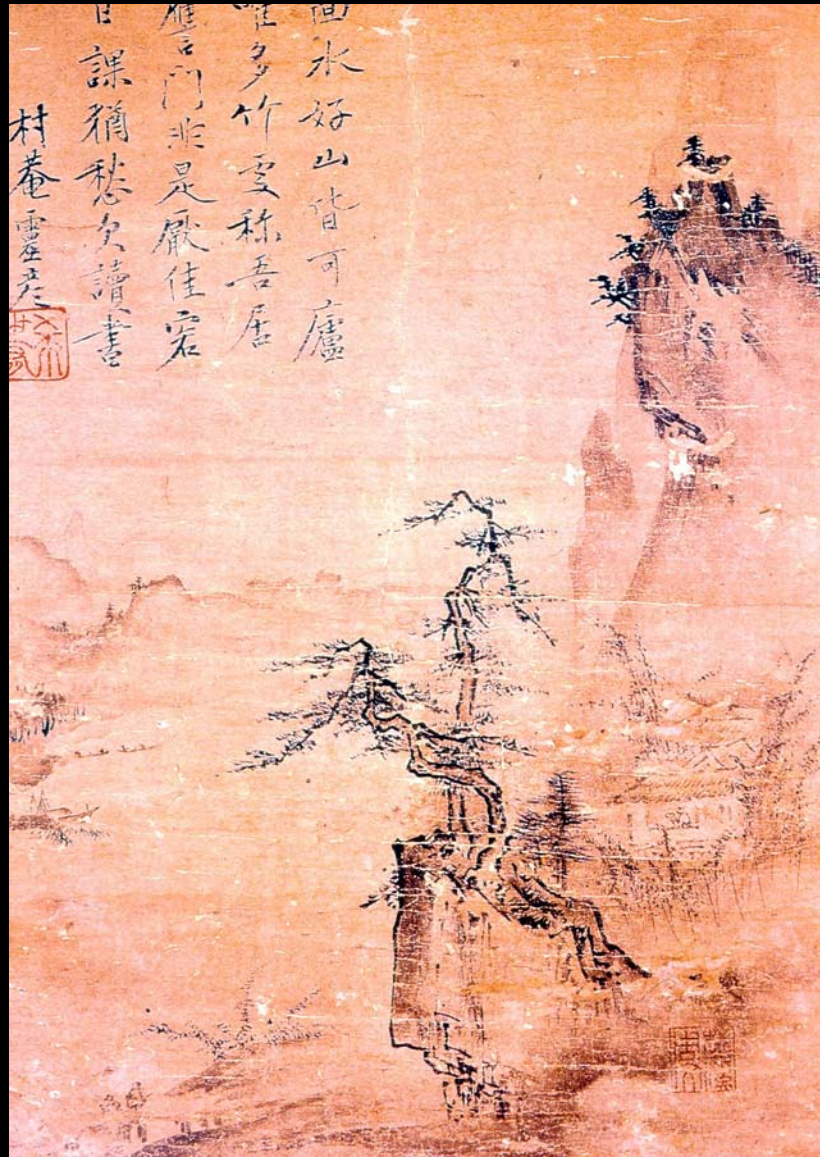
by Josetsu.

C. 1413. Hanging Scroll ink and colour on  
paper. Taizoin, Myoshinji, Kyoto



‘Reading in a Bamboo Study’ by Shubun. C.1446, Hanging Scroll, ink & colour on paper.

Tokyo National Museum



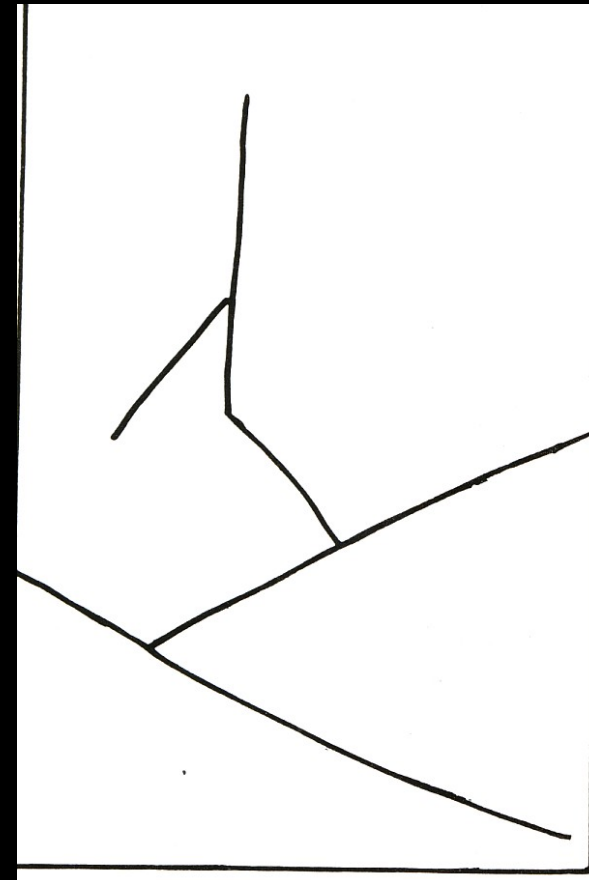
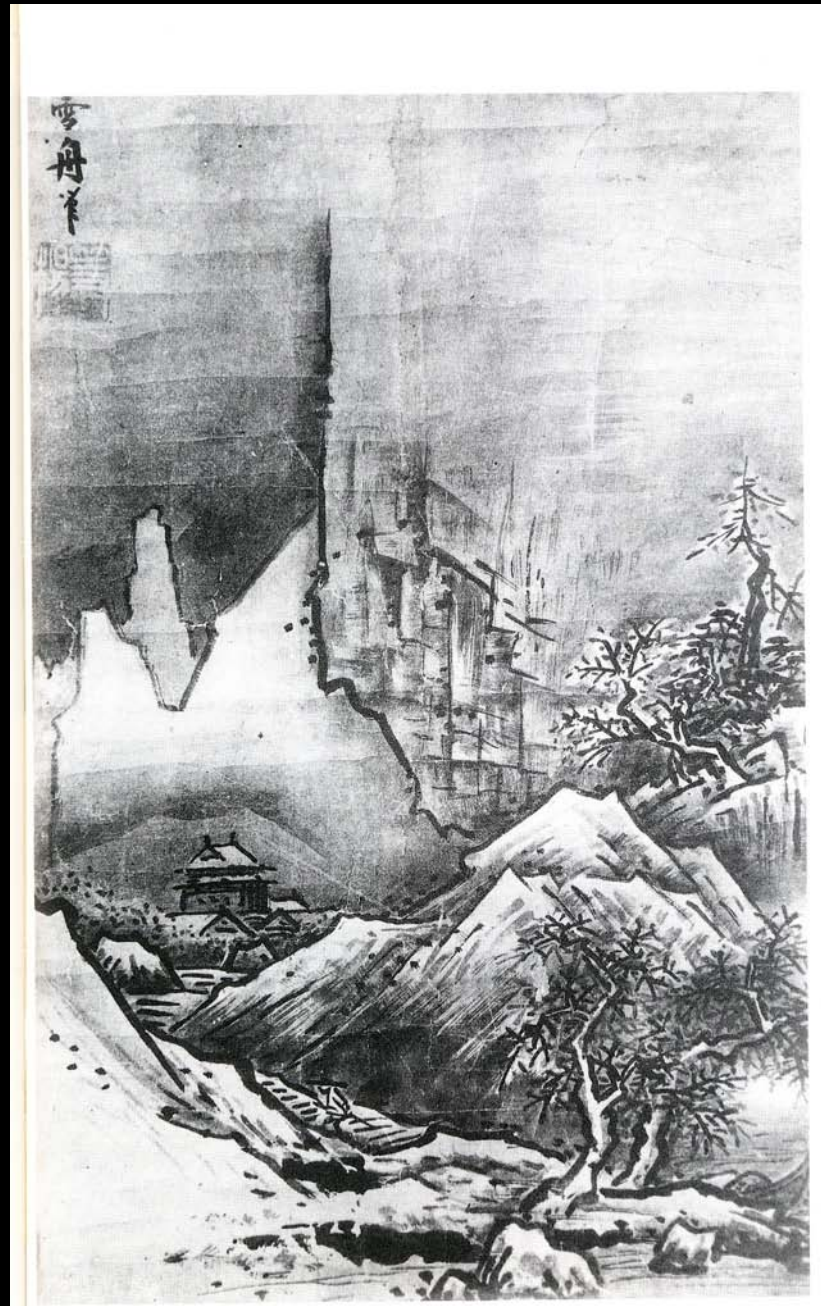
Detail from, 'Reading in a  
Bamboo Study' by Shubun. C.  
1446, Hanging Scroll, ink &  
colour on paper.

Tokyo National Museum

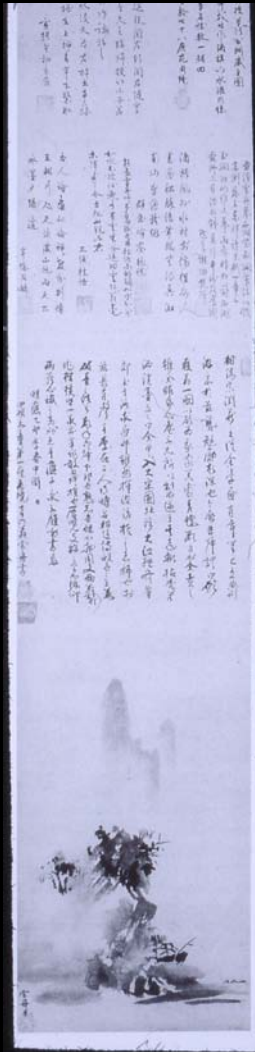


Detail from portrait of Sesshu Toyo, (1420 – 1506)  
by Tokuriki Zensetsu. Colours on silk. 17<sup>th</sup> century.  
(Kanagawa Prefectural museum).





Winter lanscape' one of four hanging scrolls of the 'The four Seasons' c.1470's. by Sesshu Toyo (1420 –1506) Tokyo National Museum.



'Landscape'  
in the Haboku  
technique.

Hanging scroll, c.1495  
by Sesshu Toyo (1420  
–1506) ink on paper,  
Tokyo National  
Museum.



Detail from  
'Landscape'  
in the Haboku  
technique.  
Hanging scroll,  
c.1495 by  
Sesshu Toyo  
(1420 –1506)  
ink on paper,.  
Tokyo National  
Museum.

