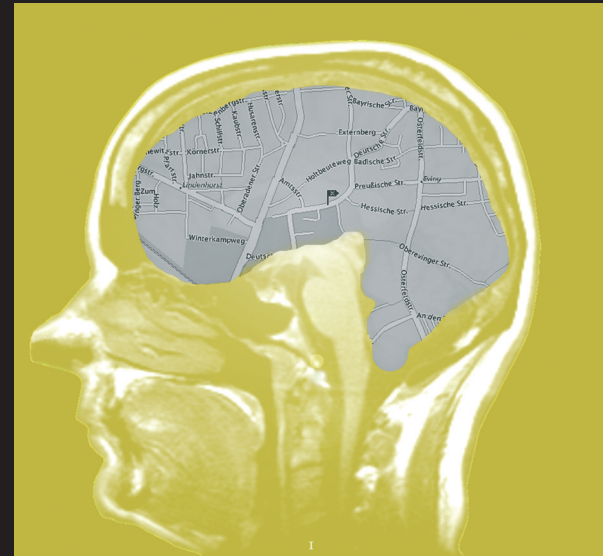


# Intelligent Territories

City-Regions as Intelligent Territories: Inclusion, Competitiveness and Learning (CRITICAL)

A series of meetings in November and December will present the findings from a three-years research project, financed by the European Commission's 5th Framework Programme.

In the 21st century, knowledge has become the most essential resource for urban competitiveness. Cities need to learn how to best harness this asset, how to connect the knowledge of public and private stakeholders, organisations and individuals. The learning city may be seen as a place which does this effectively, but we have limited understanding of this process. These meetings address this issue by asking 'How do cities learn?'

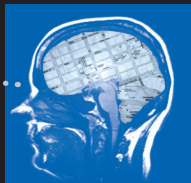


## Dortmund

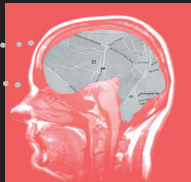
December

# 7

**Tampere**  
22 November

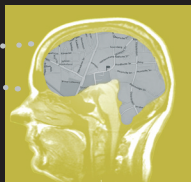
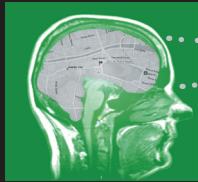


**Melbourne**  
November 8

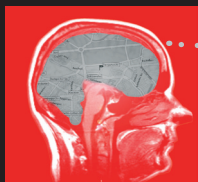


**Newcastle**  
November 28

**Dublin**  
2 December



**Berlin**  
8 December



**Dortmund**  
December 7

Partners in the research project are:

Centre for Urban and Regional Development Studies, University of Newcastle Upon Tyne, UK, *Prof. David Charles* • Chair of European Spatial Planning, University of Dortmund, Germany, *Prof. Klaus R. Kunzmann* • Employment Research Centre, Trinity College Dublin, Ireland, *Prof. James Wickham* • Sente: Research Unit for Urban and Regional Development Studies, University of Tampere, Finland, *Prof. Markku Sotarauta* • School of Social Science and Planning, RMIT University, Melbourne, Australia, *Prof. Bruce Wilson*

**Organiser:** Fachgebiet Europäische Raumplanung (ERP)  
Institut für Landes- und Stadtentwicklungsforschung  
und Bauwesen des Landes NRW (ILS NRW)

**Venue:** ILS NRW, Deutsche Straße 5, Dortmund

**Registration:** ERP, Universität Dortmund  
fax +49 231 755 4785  
e-mail: [lars.tata@udo.edu](mailto:lars.tata@udo.edu)



**CRITICAL** is an Improving Human Potential project of the European Commission's 5th Framework Programme for Research and Development. Its focus is to examine the role of knowledge and learning networks in cities. The project covers a three-year period and started in February 2003.

**CRITICAL** aims to test the concepts of a knowledge, or learning, society within the context of city regions, in order to assess how knowledge and learning can be utilised by cities for their further development. The project focuses on five geographical areas, Dortmund (Germany), Dublin (Ireland), Melbourne (Australia), Newcastle upon Tyne (UK) and Tampere (Finland), identifying the learning processes within these city-regions and the factors that lead to success or failure in particular cases.

The project seeks to progress understanding of the changing role of large cities in their national and regional contexts and to the understanding of territorial learning processes, knowledge dissemination and transfer, the role of social networks in different urban environments and also the difference between economically successful and socially excluded groups. The project also addresses issues concerning the diversity of European cultures, societies and economies, and both social and environmental sustainability.

The knowledge based economy offers potential gains for society, but also poses challenges with increasing inequalities in recent years. **CRITICAL** aims to examine the role of knowledge and learning networks in cities that are not the paradigmatic success stories from which new theories related to knowledge societies and learning societies have been developed. Its focus is to facilitate a more comprehensive understanding and to develop a set of tools to help cities engage with learning as part of holistic development strategies. The project examines how the promise of the learning society can be turned into positive outcomes for different group within cities, and what policies should be pursued by city authorities.

The research in Dortmund was carried out by Prof. Klaus R. Kunzmann and Dr. Lars Tata.

10.00 Welcome

**Prof. Rainer Danielzyk**, Director of the ILS NRW

**Prof. Klaus R. Kunzmann**, ERP, University of Dortmund

**Thomas Ellerkamp**, Economic Development Dortmund

10.30 Networks and Pods of Learning:  
A Conceptual Framework

**Prof. David Charles**, CURDS, University of Newcastle  
**CRITICAL** Project Co-ordinator

## Networks and Pods of Learning: Reports from Five Cities

11.00 Dublin, **Prof. James Wickham**

12.00 Tampere, **Prof. Markku Sotarauta**

13.00 Lunch (Buffet)

14.00 Newcastle, **Prof. David Charles**

15.00 Melbourne, **Prof. Bruce Wilson**

16.00 Coffee

16.30 Dortmund, **Prof. Klaus R. Kunzmann**

17.30 Intelligent Territories - A University Perspective  
**Prof. Eberhard Becker**, Rector; University of Dortmund

18.00 End of conference